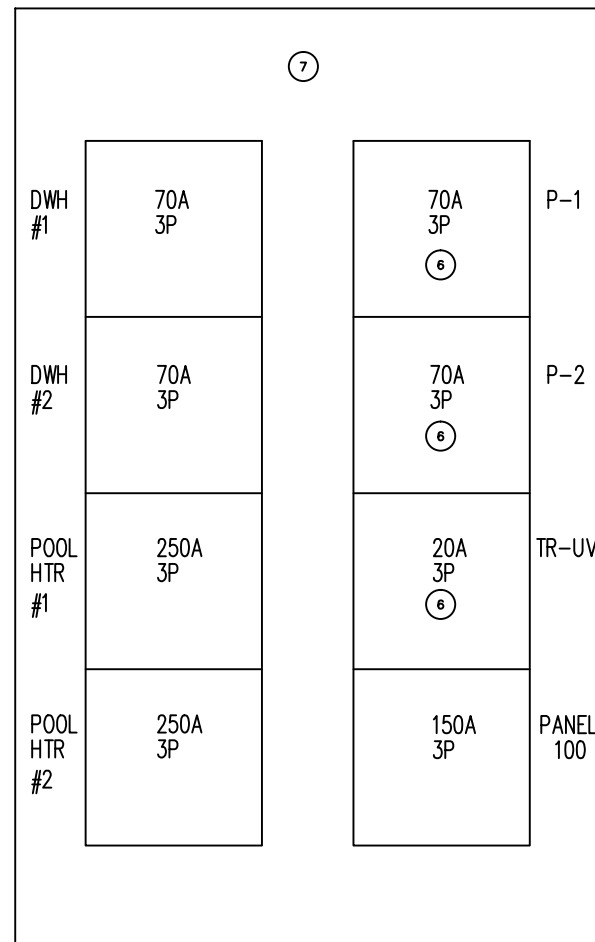


1 EXISTING CDP 6SD-1
 E-2 SCALE: NTS



2 MODIFIED CDP 6SD-1
 E-2 SCALE: NTS

KEY NOTES:	
1	DISCONNECT EXISTING BREAKER AND RELOCATE TO NEW LOCATION AS SHOWN.
2	DISCONNECT EXISTING BREAKER AND REPLACE WITH A NEW UNIT. ENSURE KAIC RATING MATCHES PANEL RATING. BREAKER IS TO COORDINATE WITH MAIN BREAKER.
3	DISCONNECT AND REMOVE EXISTING DAMAGED BREAKER HARDWARE. ENSURE MAIN BUS HAS INTEGRITY TO RECEIVE NEW HARDWARE FOR NEW BREAKER. MODIFY BUS AS NECESSARY. WORK TO BE COMPLETED BY A CSA CERTIFIED PANEL SHOP.
4	EXISTING CDP 6SD-1 IS CANADIAN GENERAL ELECTRIC SWITCHGEAR
5	DISCONNECT EXISTING BREAKER, TURN OVER TO OWNER.
6	SUPPLY AND INSTALL NEW BREAKER. ENSURE KAIC RATING MATCHES PANEL RATING. BREAKER IS TO COORDINATE WITH MAIN BREAKER.
7	CLEAN AND REFINISH PANEL COVER. PROVIDE ALL NEW LAMACOIDS.

1 Issued for Construction KO 12.04.05

NO.	REVISION/DESCRIPTION	BY	DATE

epp siepman engineering inc.

mechanical engineers
 303-100 Osborne St. South p 204.453.1080
 Winnipeg, MB f 204.453.1335
 R3L 1Y5 ese@eppsiepman.com

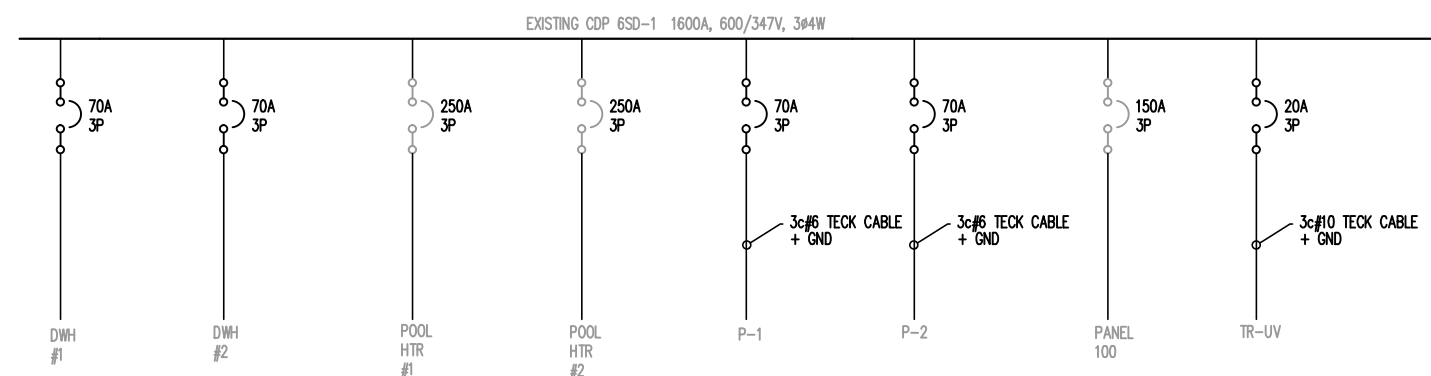
DRAWN BY	COILO	CHECKED BY	APPROVED
DATE	2012.04.05	USER APPROVAL	



CITY OF WINNIPEG
 PLANNING, PROPERTY AND
 DEVELOPMENT DEPARTMENT
 CIVIC ACCOMMODATIONS DIVISION
 300 - 65 GARRY ST. R3C 4K4

PROJECT
 ELMWOOD KILDONAN POOL
 ULTRAVIOLET SYSTEM & PUMP UPGRADES
 909 CONCORDIA AVE.

SHEET TITLE
 ELECTRICAL
 SCHEMATICS



3 SINGLE LINE DIAGRAM
 E-2 SCALE: NTS