

NOTE: CHAINAGES SHOWN ARE ALONG E. R. OF VICTOR ST.

VICTOR STREET

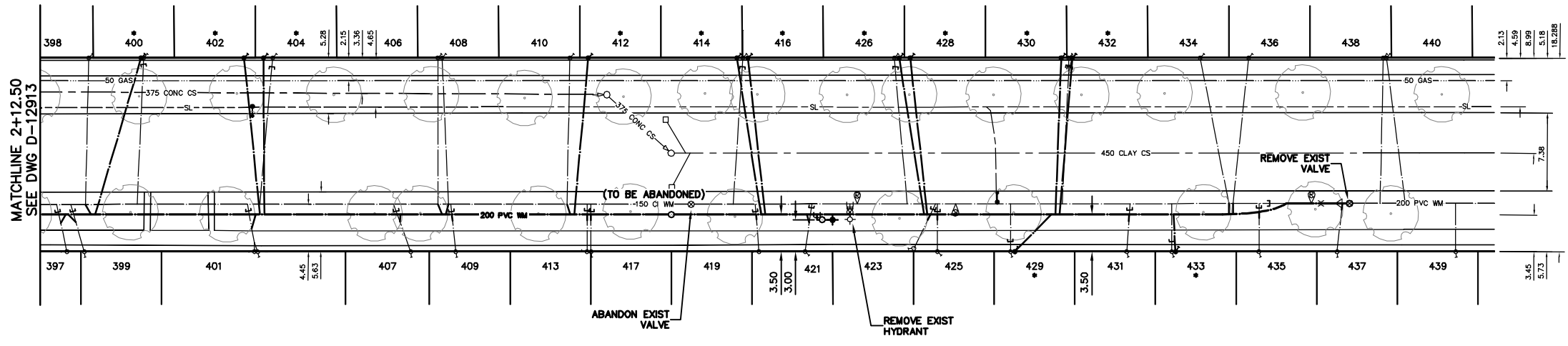


WATER SERVICE INFORMATION

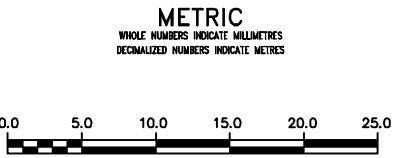
ADDRESS (STREET)	SIZE (mm) MATERIAL	SIZE (mm) MATERIAL (PROP.)	SHORT & LONG MEASUREMENT	CORP. LOCATION	REMARKS
397 VICTOR AVENUE	20 CU	20 CU	0.75 S OF N HL	1.0 S OF SC	-
398 VICTOR AVENUE	20 CU	12 CU	0.50 N OF N HL	0.3 S OF SC	-
399 VICTOR AVENUE	20 CU	12 CU	2.34 S OF N HL	1.3 S OF SC	-
400 VICTOR AVENUE	20 CU	12 CU	3.67 S OF N HL	0.7 S OF SC	-
401 VICTOR AVENUE	20 CU	20 CU	1.00 S OF N HL	0.7 S OF SC	-
402 VICTOR AVENUE	16 LEAD	12 LEAD	2.61 N OF N HL	1.3 S OF SC	WYED WITH 404
404 VICTOR AVENUE	16 LEAD	12 LEAD	0.82 N OF S HL	1.3 S OF SC	WYED WITH 402
406 VICTOR AVENUE	20 CU	12 CU	2.67 N OF N HL	OPP OF SC	-
407 VICTOR AVENUE	20 CU	20 CU	0.71 S OF N HL	1.5 S OF SC	-
408 VICTOR AVENUE	20 CU	12 CU	0.41 N OF N HL	0.9 N OF SC	-
409 VICTOR AVENUE	20 CU	12 CU	1.61 N OF S HL	0.3 S OF SC	-
410 VICTOR AVENUE	20 CU	20 CU	0.45 S OF N HL	0.3 S OF SC	WYED WITH 412
412 VICTOR AVENUE	20 CU	12 CU	1.92 S OF S HL	0.3 S OF SC	WYED WITH 410
413 VICTOR AVENUE	12 CU	12 CU	0.34 S OF N HL	OPP OF SC	-
414 VICTOR AVENUE	16 LEAD	12 LEAD	0.37 N OF N HL	1.0 S OF SC	WYED WITH 416
416 VICTOR AVENUE	16 LEAD	20 CU	1.13 S OF S HL	1.0 S OF SC	WYED WITH 414
417 VICTOR AVENUE	20 CU	20 CU	0.75 S OF S HL	OPP OF SC	-
419 VICTOR AVENUE	20 CU	20 CU	1.10 N OF N HL	0.4 OF SC	-
421 VICTOR AVENUE	20 CU	20 CU	1.68 S OF N HL	0.6 S OF SC	-
423 VICTOR AVENUE	20 CU	12 CU	0.71 N OF N HL	2.1 N OF SC	-
425 VICTOR AVENUE	20 CU	12 CU	1.07 N OF S HL	OPP OF SC	-
426 VICTOR AVENUE	16 LEAD	12 LEAD	0.80 SO FO N HL	1.2 N OF SC	WYED WITH 428
428 VICTOR AVENUE	16 LEAD	12 LEAD	2.47 S OF S HL	1.2 N OF SC	WYED WITH 426
429 VICTOR AVENUE	12 LEAD	12 LEAD	0.96 N OF S HL	OPP OF SC	-
430 VICTOR AVENUE	16 LEAD	20 CU	0.60 N OF N HL	0.7 S OF SC	WYED WITH 432
431 VICTOR AVENUE	20 CU	20 CU	1.96 S OF N HL	0.3 N OF SC	-
432 VICTOR AVENUE	16 LEAD	20 CU	0.72 S OF S HL	1.0 S OF SC	WYED WITH 430
433 VICTOR AVENUE	12 LEAD	12 LEAD	0.30 N OF S HL	OPP OF SC	-
434 VICTOR AVENUE	20 CU	20 CU	2.27 S OF N HL	2.7 N OF SC	-
435 VICTOR AVENUE	20 CU	20 CU	1.10 N OF S HL	1.3 S OF SC	-
436 VICTOR AVENUE	20 CU	20 CU	0.76 N OF S HL	1.5 S OF SC	-
437 VICTOR AVENUE	20 CU	12 CU	0.56 N OF S HL	0.4 S OF SC	-
438 VICTOR AVENUE	20 CU	20 CU	1.38 S OF N HL	OPP OF SC	-
440 VICTOR AVENUE	20 CU	20 CU	2.21 S OF S HL	1.8 S OF SC	-
441 VICTOR AVENUE	20 CU	12 CU	0.87 S OF N HL	0.3 N OF SC	-
443 VICTOR AVENUE	20 CU	20 CU	2.25 S OF S HL	OPP OF SC	-
446 VICTOR AVENUE	20 CU	20 CU	0.81 N OF N HL	0.86 N OF SC	-
450 VICTOR AVENUE	20 CU	20 CU	1.50 S OF S HL	9.4 N OF SC	-

* SERVICES TO BE RENEWED TO R. ALL OTHERS TO BE RECONNECTED

NOTE: ALL VALVES TO BE INSTALLED COUNTER-CLOCKWISE TO CLOSE



MATCHLINE 2+12.50 SEE DWG D-12913



WARNING
IF POWER EQUIPMENT OR EXPLOSIVES ARE TO BE USED FOR EXCAVATION ON THIS PROJECT THE CONTRACTOR MUST:
1) NOTIFY THE GAS COMPANY OF THE PROPOSED LOCATION OF EXCAVATION.
2) TAKE PRECAUTION TO AVOID DAMAGE TO GAS COMPANY INSTALLATIONS.
SEE PROVINCIAL REGULATION 21072 FOR DETAILS

LOCATION APPROVED UNDERGROUND STRUCTURES
SUPV. U/G STRUCTURES COMMITTEE DATE
NOTE: LOCATION OF UNDERGROUND STRUCTURES AS SHOWN ARE BASED ON THE BEST INFORMATION AVAILABLE BUT NO GUARANTEE IS GIVEN THAT ALL EXISTING UTILITIES ARE SHOWN OR THAT THE GIVEN LOCATIONS ARE EXACT. CONFIRMATION OF EXISTENCE AND EXACT LOCATION OF ALL SERVICES MUST BE OBTAINED FROM THE INDIVIDUAL UTILITIES BEFORE PROCEEDING WITH CONSTRUCTION.

B.M. ELEV.			
CONSTRUCTION COMPLETION DATE: YYYY MM DD			
DESIGNED BY	NC		
CHECKED BY	SC		
DRAWN BY	CJH		
APPROVED BY	KZ		
SCALE:			
HORIZONTAL	1:250		
VERTICAL	1:50		
RELEASED FOR CONSTRUCTION			
DATE	2012 03 21		
DATE			
NO.	REVISIONS	DATE	BY

ENGINEER'S SEAL
ORIGINAL SIGNED BY S.R.J. COURNOYER 12-03-21
CONSULTANT DRAWING NUMBER

THE CITY OF WINNIPEG
WATER AND WASTE DEPARTMENT
ENGINEERING DIVISION
2012 WATERMAIN RENEWALS
VICTOR STREET
112.50 N OF ST MATTHEWS AVENUE TO
250 N OF ST MATTHEWS AVENUE
SHEET 9 OF 10
CITY DRAWING NUMBER D-12914