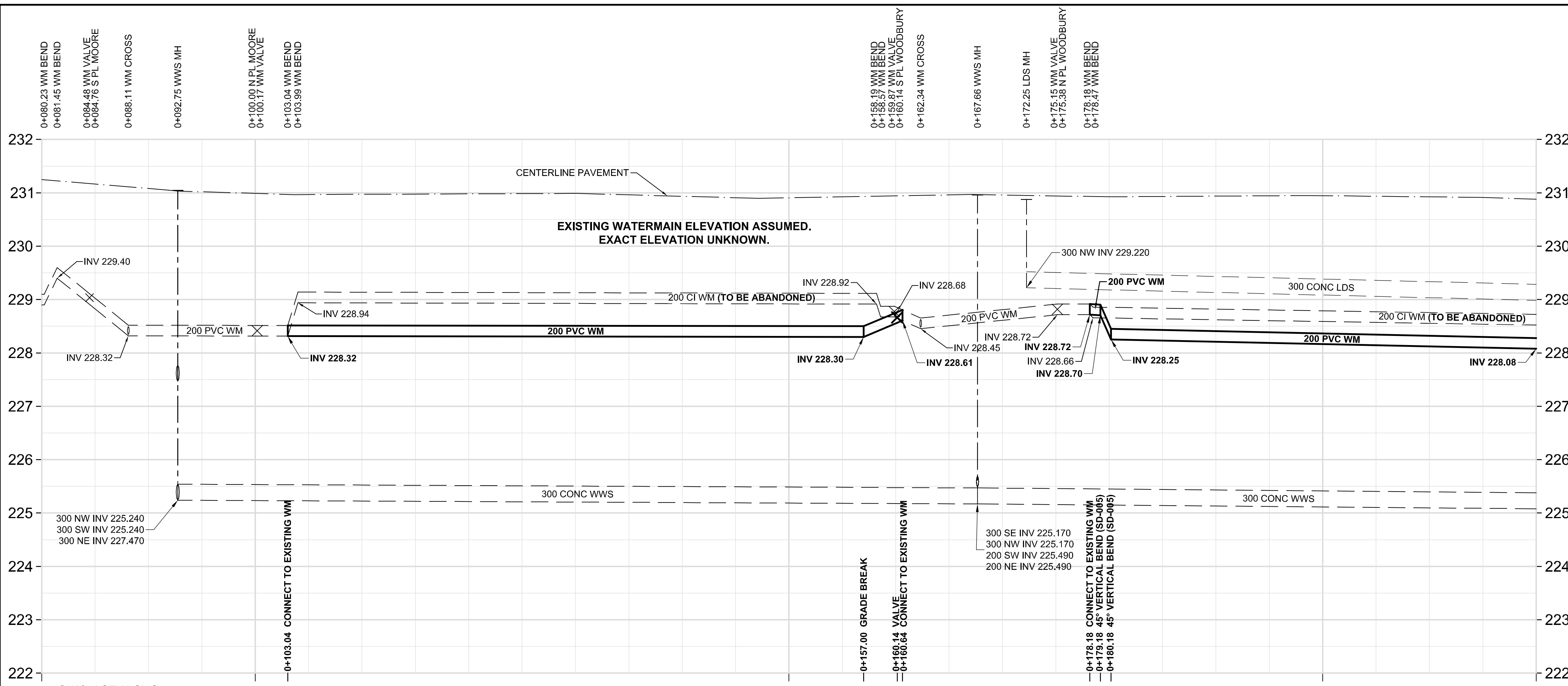


D SIZE 22" x 34" (559mm x 864mm)

PLOT: 3/6/2012 9:51:42 AM

AECOM REVIEW DRFT CHK  
 AECOM FILE NAME: 60239330-01-C-102-ROX.dwg Saved By:  
 REGISTERED PROFESSIONAL ENGINEER

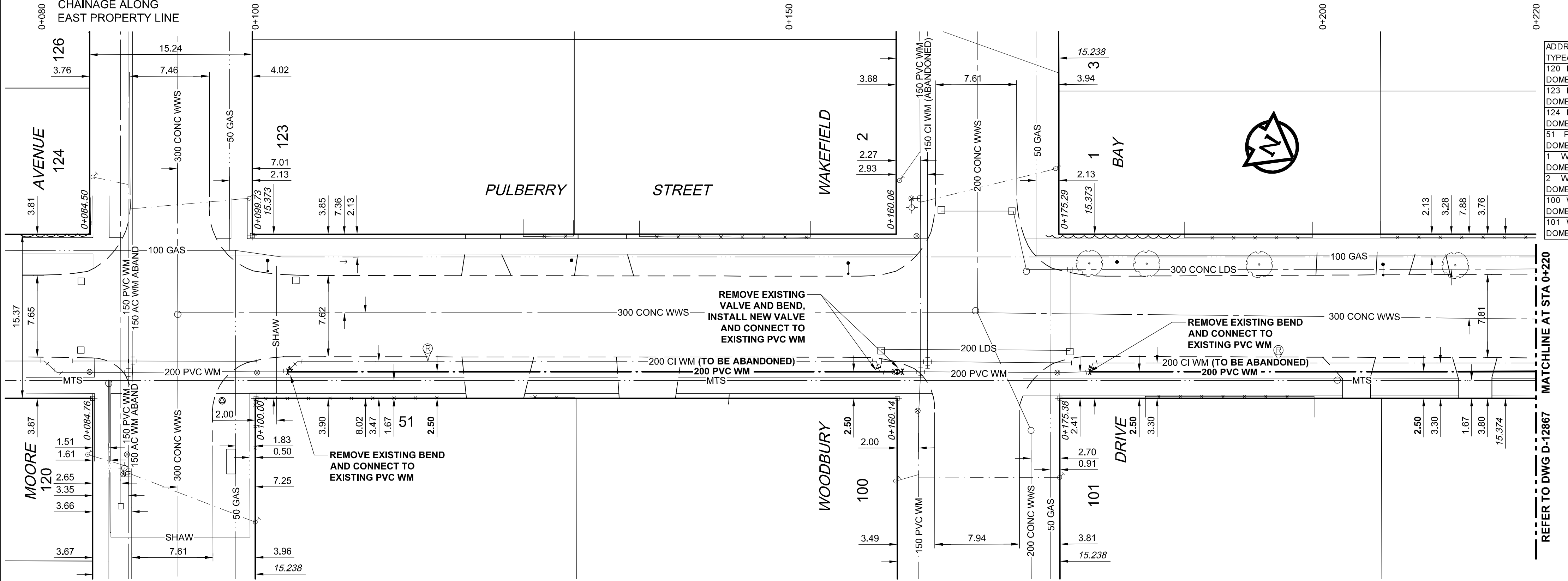


**WARNING**

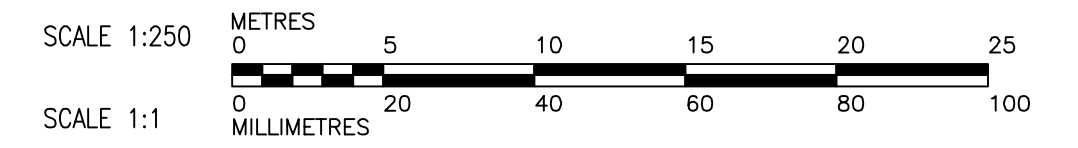
IF POWER EQUIPMENT OR EXPLOSIVES ARE TO BE USED FOR EXCAVATION ON THIS PROJECT, THE CONTRACTOR MUST NOTIFY THE GAS COMPANY OF THE PROPOSED LOCATION OF EXCAVATION. TAKE PRECAUTION TO AVOID DAMAGE TO GAS COMPANY INSTALLATIONS. SEE PROVINCIAL REGULATION 140/92 FOR DETAILS

**CONSTRUCTION NOTES:**

1. EXPOSE WATERMAIN CONNECTIONS AND CONFIRM INVERTS PRIOR TO CONSTRUCTION
2. INSTALL WATERMAIN BY TRENCHLESS METHODS.
3. ALL MATERIALS SHALL CONFORM TO THE CITY OF WINNIPEG STANDARD CONSTRUCTION SPECIFICATIONS.
4. MINIMUM COVER TO TOP OF PROPOSED WATERMAIN SHALL BE 2.5m FROM STREET CENTERLINE.
5. INSTALL ALL HYDRANTS WITH FLANGE ELEVATION 50mm TO 150mm ABOVE FINISHED GRADE.
6. REPLACE ALL EXISTING LEAD SERVICES FROM THE PROPOSED WATERMAIN TO PROPERTY LINE.
7. NOTIFY ALL AFFECTED RESIDENTS AND BUSINESSES 24 HOURS IN ADVANCE OF ANY WATER SHUTDOWN OR DISRUPTION OF SERVICE.
8. LOCATION OF WATER SERVICES SHOWN ON DRAWINGS ARE APPROXIMATE. THE CONTRACTOR SHALL FIELD LOCATE ALL WATER SERVICES PRIOR TO CONSTRUCTION.
9. BACKFILL UNDER OR WITHIN 1.0m OF PAVEMENTS, INCLUDING SIDEWALKS SHALL BE CLASS 3 BACKFILL EXCEPT AS NOTED. BACKFILL IN BOULEVARDS SHALL BE CLASS 5 BACKFILL.



ADDRESS TYPE/NATURE	DISTANCE PROPERTY	SIZE(mm) & TYPE	SHORT & LONG MEASUREMENT	CORPORATION LOCATION	REMARKS
120 MOORE AV DOMESTIC		20 COPPER	0.90 E OF WHOUSE LINE	0.10 WHYDT@120	
123 MOORE AV DOMESTIC		20 COPPER	0.60 E OF EHL IN SDWK	71.30 EHYDT@132	
124 MOORE AV DOMESTIC		20 COPPER	2.70 W OF E HOUSE LINE	69.00 EHYDT@132	
51 PULBERRY ST DOMESTIC		20 COPPER	1.50 E OF WHOUSE LINE	0.50 EHYDT@120	
1 WAKEFIELD BY DOMESTIC		20 COPPER	2.40 WEHL	104.60EHYD WAKEFIELD	
2 WAKEFIELD BY DOMESTIC		20 COPPER	101.50EHYD @12 WAKEFIELD	102.10EHYD WAKEFIELD	
100 WOODBURY DR DOMESTIC		20 COPPER	5.20 EWHL	0.60 WISC	
101 WOODBURY DR DOMESTIC		20 COPPER	4.60 EWHL	OPP S/C	



**METRIC**  
 WHOLE NUMBERS INDICATE MILLIMETRES  
 DECIMALIZED NUMBERS INDICATE METRES



BID OPPORTUNITY NO. 135-2012

EXISTING	LEGEND - PLAN	NEW	EXISTING	LEGEND - PLAN	NEW	EXISTING	LEGEND - PROFILE	NEW
150 WM	WATERMAIN	150 WM	150 WM	WATERMAIN	150 WM	150 WM	WATERMAIN	150 WM
300 LDS	LAND DRAINAGE SEWER	300 LDS	300 LDS	LAND DRAINAGE SEWER	300 LDS	300 LDS	LAND DRAINAGE SEWER	300 LDS
250 WWS	WASTE WATER SEWER	250 WWS	250 WWS	WASTE WATER SEWER	250 WWS	250 WWS	WASTE WATER SEWER	250 WWS
○	MANHOLE	●	○	MANHOLE	●	○	MANHOLE	●
□	CATCH BASIN	■	□	CATCH BASIN	■	□	CATCH BASIN	■
△	CURB INLET	▲	△	CURB INLET	▲	△	CURB INLET	▲
▭	CULVERT	▭	▭	CULVERT	▭	▭	CULVERT	▭
—	PIPE ABANDONMENTS	—	—	PIPE ABANDONMENTS	—	—	PIPE ABANDONMENTS	—
+	SURVEY BAR	+	+	SURVEY BAR	+	+	SURVEY BAR	+
+	LEGEND - PLAN	+	+	LEGEND - PLAN	+	+	LEGEND - PROFILE	+

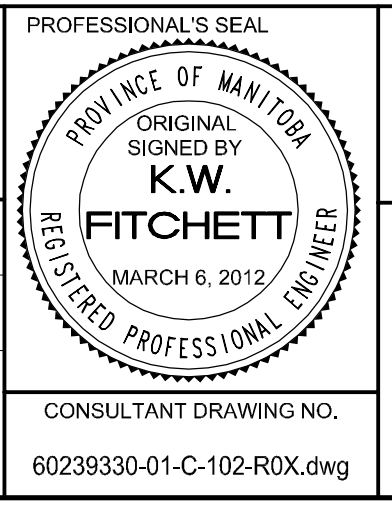
**LOCATION APPROVED**  
 UNDERGROUND STRUCTURES  
 SUPR. U/G STRUCTURES DATE COMMITTEE  
 NOTE:  
 LOCATION OF UNDERGROUND STRUCTURES AS SHOWN ARE BASED ON THE BEST INFORMATION AVAILABLE. BUT NO GUARANTEE IS GIVEN THAT ALL EXISTING UTILITIES ARE SHOWN OR THAT THE GIVEN LOCATIONS ARE EXACT. CONFIRMATION OF EXISTENCE AND EXACT LOCATION OF ALL SERVICES MUST BE OBTAINED FROM THE INDIVIDUAL UTILITIES BEFORE PROCEEDING WITH CONSTRUCTION.

BM 63-038	84R723 - N.E. Cor. Moore Ave. & Pulberry St. Tot. on top of 0.05 m dia. x 2.4 m iron pipe, 3.05 m S. of N.E. of Moore Ave. & on E.L. of Pulberry St.
ELEV. 231.197m	
NO.	REVISIONS
0	ISSUED FOR CONSTRUCTION 12/03/06 JP
A	ISSUED FOR REVIEW 12/02/17 JP
	DATE YY/MM/DD BY

**AECOM**

DESIGNED BY GSK CHECKED BY FMI  
 DRAWN BY JP APPROVED BY BTW  
 HOR. SCALE 1:250  
 VERT. SCALE 1:50  
 DATE 2012/03/06

RELEASED FOR CONSTRUCTION  
 KAS ZUREK  
 DATE 2012/03/06



**THE CITY OF WINNIPEG**  
 WATER AND WASTE DEPARTMENT

**2012 WATERMAIN RENEWALS CONTRACT 1**

**PULBERRY STREET**  
 MOORE AVENUE TO 45m NORTH OF WOODBURY DRIVE

SHEET 2 OF 11  
 CITY DRAWING NUMBER  
**D-12866**