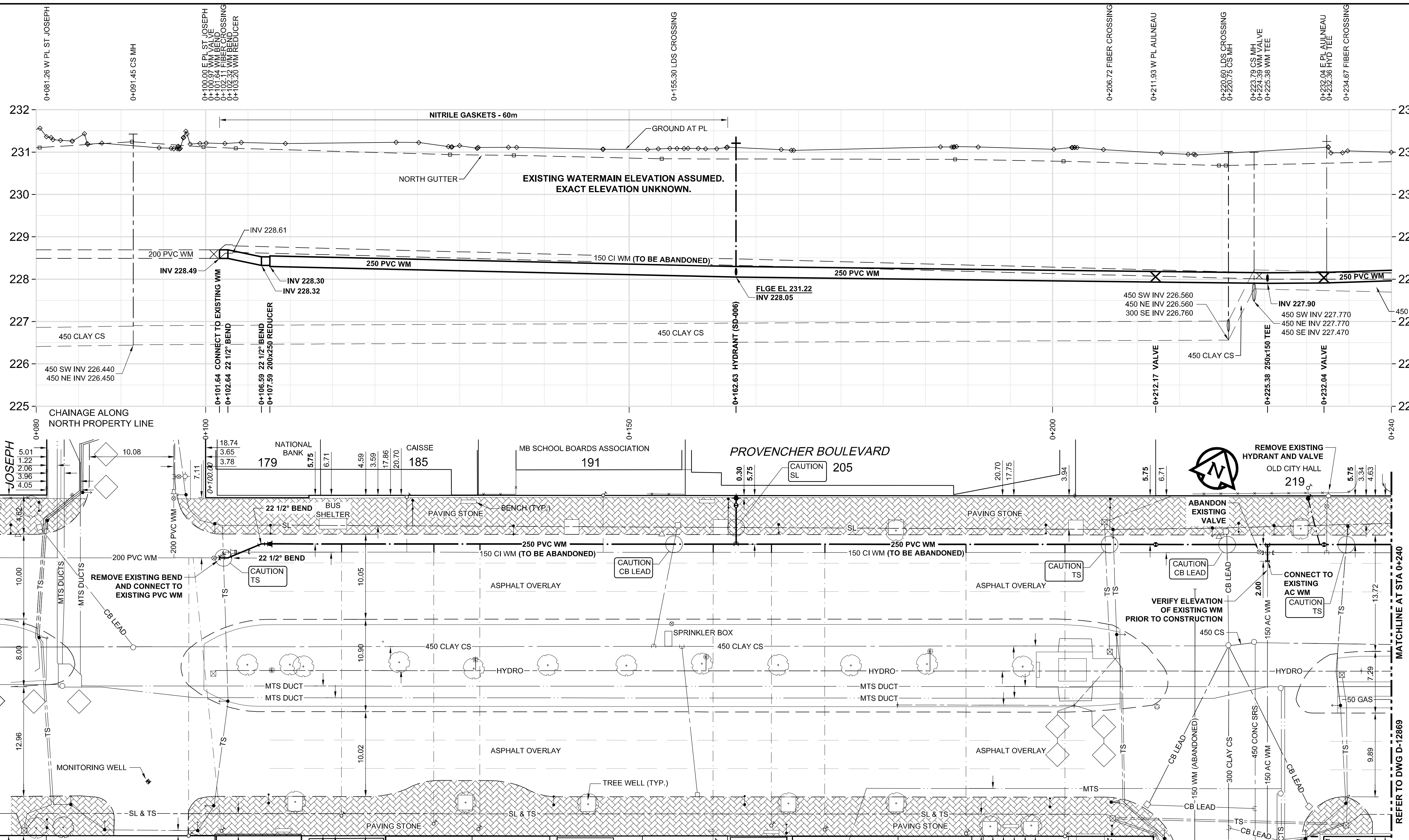


D SIZE 22" x 34" (559mm x 864mm)

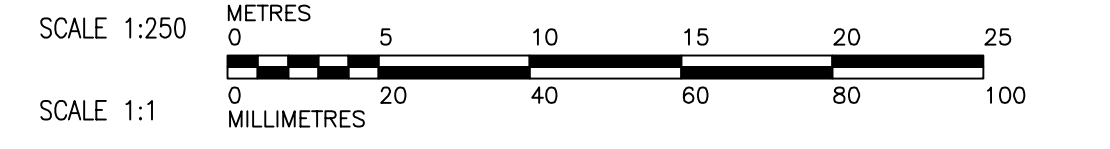
PLOT: 3/6/2012 9:50:54 AM

AECOM FILE NAME: 60239330-01-C-104-R0X.dwg Saved By: [REDACTED]



WARNING
 IF POWER EQUIPMENT OR EXPLOSIVES ARE TO BE USED FOR EXCAVATION ON THIS PROJECT, THE CONTRACTOR MUST NOTIFY THE GAS COMPANY OF THE PROPOSED LOCATION OF EXCAVATION. TAKE PRECAUTION TO AVOID DAMAGE TO GAS COMPANY INSTALLATIONS. SEE PROVINCIAL REGULATION 140/92 FOR DETAILS.

- CONSTRUCTION NOTES:**
1. EXPOSE WATERMAIN CONNECTIONS AND CONFIRM INVERTS PRIOR TO CONSTRUCTION
 2. INSTALL WATERMAIN BY TRENCHLESS METHODS.
 3. ALL MATERIALS SHALL CONFORM TO THE CITY OF WINNIPEG STANDARD CONSTRUCTION SPECIFICATIONS.
 4. MINIMUM COVER TO TOP OF PROPOSED WATERMAIN SHALL BE 2.5m FROM STREET CENTERLINE.
 5. INSTALL ALL HYDRANTS WITH FLANGE ELEVATION 50mm TO 150mm ABOVE FINISHED GRADE.
 6. REPLACE ALL EXISTING LEAD SERVICES FROM THE PROPOSED WATERMAIN TO PROPERTY LINE.
 7. NOTIFY ALL AFFECTED RESIDENTS AND BUSINESSES 24 HOURS IN ADVANCE OF ANY WATER SHUTDOWN OR DISRUPTION OF SERVICE.
 8. LOCATION OF WATER SERVICES SHOWN ON DRAWINGS ARE APPROXIMATE. THE CONTRACTOR SHALL FIELD LOCATE ALL WATER SERVICES PRIOR TO CONSTRUCTION.
 9. BACKFILL UNDER OR WITHIN 1.0m OF PAVEMENTS, INCLUDING SIDEWALKS SHALL BE CLASS 3 BACKFILL EXCEPT AS NOTED. BACKFILL IN BOULEVARDS SHALL BE CLASS 5 BACKFILL.
 10. LOCATE AND RECONNECT ALL SERVICES FOR IRRIGATION SYSTEM IN THE MEDIAN OF PROVENCHER BOULEVARD.



METRIC
 WHOLE NUMBERS INDICATE MILLIMETRES
 DECIMALIZED NUMBERS INDICATE METRES

APEGM
 Certificate of Authorization
 AECOM Canada Ltd.
 No. 4671 Date: 2012/03/06

BID OPPORTUNITY NO. 135-2012

ADDRESS	DISTANCE	SIZE(mm)	SHORT & LONG MEASUREMENT	CORPORATION LOCATION	REMARKS
179 PROVENCHER BV DOMESTIC	0.91 BLDG	38 COPPER	7.80 R/LHL	19.50 N/HYDT	SERVICED OF ST JOSEPH
180 PROVENCHER BV DOMESTIC	0.61 BLDG	20 COPPER	0.90 E/MHL	86.50 E/HYDT	
184 PROVENCHER BV DOMESTIC	3.05 BLDG	20 COPPER	3.90 L/RHL		
185 PROVENCHER BV DOMESTIC	0.61 BLDG	20 COPPER	10.40 R/LHL		
186 PROVENCHER BV DOMESTIC	2.13 BLDG	20 COPPER	4.60 R/LHL	OPP S/C	
190 PROVENCHER BV DOMESTIC	0.3 BLDG	25 COPPER	0.60 L OF R/L BLDG	0.60 OF S/C	

ADDRESS	DISTANCE	SIZE(mm)	SHORT & LONG MEASUREMENT	CORPORATION LOCATION	REMARKS
191 PROVENCHER BV DOMESTIC	3.08 BLDG	25 COPPER	5.00 L/RHL		
194 PROVENCHER BV DOMESTIC	0.3 BLDG	25 COPPER	0.80 R/LHL	62.50 E/HYDT @ AULNEAU	
195 PROVENCHER BV DOMESTIC	0.12 BLDG	1.30 R/RHL			
196 PROVENCHER BV DOMESTIC	1.22 BLDG	1.30 R/LHL			
199 PROVENCHER BV DOMESTIC	8.08 BLDG	20 COPPER	2.10 R/LHL		NOT IN SERVICE
200 PROVENCHER BV DOMESTIC	0.79 BLDG	25 COPPER	3.70 E/MHL	OPP S/C	

ADDRESS	DISTANCE	SIZE(mm)	SHORT & LONG MEASUREMENT	CORPORATION LOCATION	REMARKS
202 PROVENCHER BV DOMESTIC	0.34 BLDG	20 COPPER	0.70 R/LHL		
205 PROVENCHER BV DOMESTIC					SERVICED OFF DUMOULIN
208 PROVENCHER BV DOMESTIC	4.27 STREET	20 COPPER	2.50 L/RHL		
219 PROVENCHER BV DOMESTIC	16 BLDG	20 LEAD	5.50 E/WBL		RENEW TO PL

150 WM	WATERMAIN	150 WM	CURB STOP	150 WM	WATERMAIN	150 WM	LOCATION APPROVED
⊕	HYDRANT	⊕	REDUCER	⊕	HYDRANT	⊕	UNDERGROUND STRUCTURES
⊕	VALVE	⊕	COUPLING	⊕	VALVE	⊕	
⊕	LAND DRAINAGE SEWER	⊕	ANODE	⊕	LAND DRAINAGE SEWER	⊕	
⊕	WASTE WATER SEWER	⊕	HYDRO	⊕	WASTE WATER SEWER	⊕	
⊕	MANHOLE	⊕	MTS	⊕	PAVEMENT CROWN	⊕	
⊕	CATCH BASIN	⊕	GAS	⊕	N/W PROPERTY LINE	⊕	
⊕	CURB INLET	⊕	TESTHOLE	⊕	S/E PROPERTY LINE	⊕	
⊕	CULVERT	⊕	LAMP STANDARD	⊕	N/W GUTTER	⊕	
⊕	PIPE ABANDONMENTS	⊕	TREE	⊕	S/E GUTTER	⊕	
⊕	SURVEY BAR	⊕	PEDESTAL	⊕	ELECTRICAL BOX	⊕	
⊕	EXISTING	⊕	LEGEND - PLAN	⊕	LEGEND - PROFILE	⊕	

LOCATION APPROVED UNDERGROUND STRUCTURES
 SUPR. U/G STRUCTURES DATE COMMITTEE
 NOTE: LOCATION OF UNDERGROUND STRUCTURES AS SHOWN ARE BASED ON THE BEST INFORMATION AVAILABLE. BUT NO GUARANTEE IS GIVEN THAT ALL EXISTING UTILITIES ARE SHOWN OR THAT THE GIVEN LOCATIONS ARE EXACT. CONFIRMATION OF EXISTENCE AND EXACT LOCATION OF ALL SERVICES MUST BE OBTAINED FROM THE INDIVIDUAL UTILITIES BEFORE PROCEEDING WITH CONSTRUCTION.

NO.	REVISIONS	DATE	BY
0	ISSUED FOR CONSTRUCTION	12/03/06	JP
A	ISSUED FOR REVIEW	12/02/17	JP

AECOM

DESIGNED BY: GSK
 CHECKED BY: FMI
 DRAWN BY: JP
 APPROVED BY: BTW
 HOR. SCALE: 1:250
 VERT. SCALE: 1:50
 DATE: 2012/03/06

PROFESSIONAL'S SEAL
 PROVINCE OF MANITOBA
 ORIGINAL SIGNED BY: K.W. FITCHETT
 REGISTERED PROFESSIONAL ENGINEER
 MARCH 6, 2012
 CONSULTANT DRAWING NO. 60239330-01-C-104-R0X.dwg

THE CITY OF WINNIPEG WATER AND WASTE DEPARTMENT

2012 WATERMAIN RENEWALS CONTRACT 1

PROVENCHER BOULEVARD RUE ST. JOSEPH TO 8.0m EAST of RUE AULNEAU

SHEET 4 OF 11
 CITY DRAWING NUMBER D-12868
 REV 0