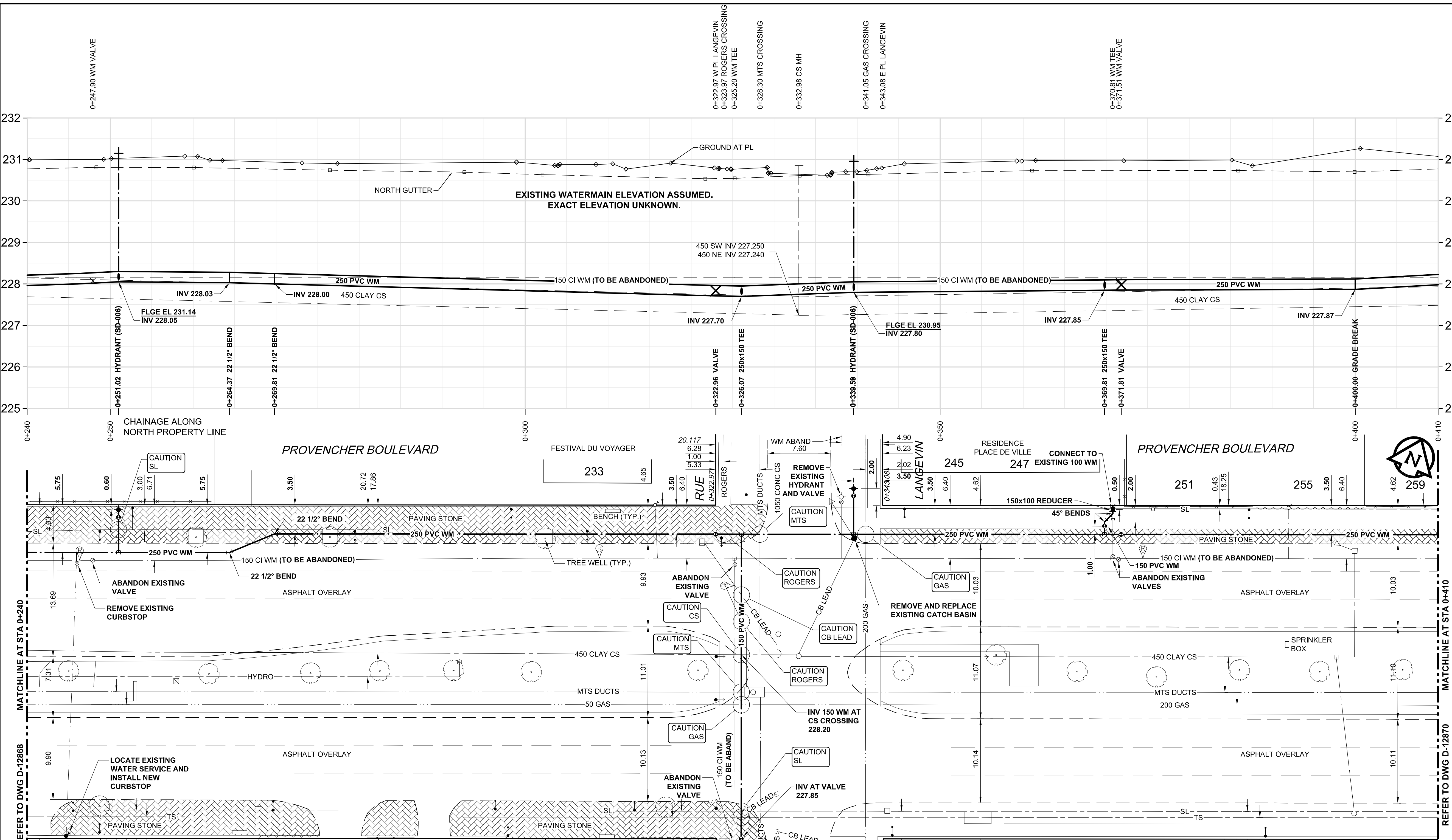


D SIZE 22" x 34" (559mm x 864mm)

PLOT: 9/6/2012 9:50:17 AM

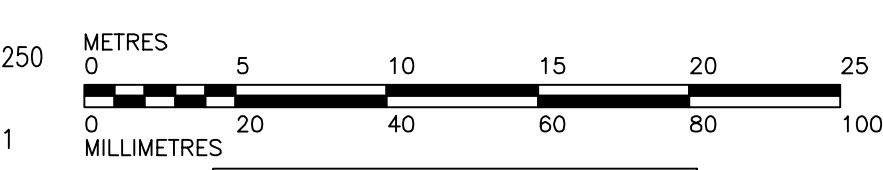
AECOM FILE NAME: 60239330-01-C-104-RDX.dwg Saved By: [REDACTED]



**WARNING**  
 IF POWER EQUIPMENT OR EXPLOSIVES ARE TO BE USED FOR EXCAVATION ON THIS PROJECT, THE CONTRACTOR MUST NOTIFY THE GAS COMPANY OF THE PROPOSED LOCATION OF EXCAVATION. TAKE PRECAUTION TO AVOID DAMAGE TO GAS COMPANY INSTALLATIONS. SEE PROVINCIAL REGULATION 140/92 FOR DETAILS.

- CONSTRUCTION NOTES:**
1. EXPOSE WATERMAIN CONNECTIONS AND CONFIRM INVERTS PRIOR TO CONSTRUCTION
  2. INSTALL WATERMAIN BY TRENCHLESS METHODS.
  3. ALL MATERIALS SHALL CONFORM TO THE CITY OF WINNIPEG STANDARD CONSTRUCTION SPECIFICATIONS.
  4. MINIMUM COVER TO TOP OF PROPOSED WATERMAIN SHALL BE 2.5m FROM STREET CENTERLINE.
  5. INSTALL ALL HYDRANTS WITH FLANGE ELEVATION 50mm TO 150mm ABOVE FINISHED GRADE.
  6. REPLACE ALL EXISTING LEAD SERVICES FROM THE PROPOSED WATERMAIN TO PROPERTY LINE.
  7. NOTIFY ALL AFFECTED RESIDENTS AND BUSINESSES 24 HOURS IN ADVANCE OF ANY WATER SHUTDOWN OR DISRUPTION OF SERVICE.
  8. LOCATION OF WATER SERVICES SHOWN ON DRAWINGS ARE APPROXIMATE. THE CONTRACTOR SHALL FIELD LOCATE ALL WATER SERVICES PRIOR TO CONSTRUCTION.
  9. BACKFILL UNDER OR WITHIN 1.0m OF PAVEMENTS, INCLUDING SIDEWALKS SHALL BE CLASS 3 BACKFILL EXCEPT AS NOTED. BACKFILL IN BOULEVARDS SHALL BE CLASS 5 BACKFILL.
  10. LOCATE AND RECONNECT ALL SERVICES FOR IRRIGATION SYSTEM IN THE MEDIUM OF PROVENCHER BOULEVARD.

**METRIC**  
 WHOLE NUMBERS INDICATE MILLIMETRES  
 DECIMALIZED NUMBERS INDICATE METRES



ADDRESS	DISTANCE	SIZE(mm)	SHORT & LONG	CORPORATION	REMARKS
TYPE/NATURE	PROPERTY	& TYPE	MEASUREMENT	LOCATION	
222 PROVENCHER BV DOMESTIC		38 COPPER			
227 PROVENCHER BV DOMESTIC		20 COPPER	43.60 E/HYD OPPOS 219	OPP S/C	SERVICED OFF DUMOULIN
230 PROVENCHER BV DOMESTIC	10.49	25 COPPER	9.10 SN/BL 10.10 SN/PL	OPP S/C	
233 PROVENCHER BV DOMESTIC		50 COPPER		7.00 W/ELL	
245 PROVENCHER BV DOMESTIC					COMMON W/247

ADDRESS	DISTANCE	SIZE(mm)	SHORT & LONG	CORPORATION	REMARKS
TYPE/NATURE	PROPERTY	& TYPE	MEASUREMENT	LOCATION	
247 PROVENCHER BV DOMESTIC		100 COPPER	1.00 EEBL #247 PROVENCHER 28.80 EESPL LANGEVIN		COMMON W/245
251 PROVENCHER BV DOMESTIC	9.14	20 COPPER	1.50 W/WHL		
255 PROVENCHER BV DOMESTIC	9.69	20 COPPER	3.50 R/LHL		
259 PROVENCHER BV DOMESTIC	10.52	20 COPPER	0.90 E/EHL		

EXISTING	LEGEND - PLAN	NEW	EXISTING	LEGEND - PROFILE	NEW
150 WM	WATERMAIN	150 WM	150 WM	WATERMAIN	150 WM
300 LDS	LAND DRAINAGE SEWER	300 LDS	300 LDS	LAND DRAINAGE SEWER	300 LDS
250 WWS	WASTE WATER SEWER	250 WWS	250 WWS	WASTE WATER SEWER	250 WWS
MANHOLE		MANHOLE	MANHOLE		
CATCH BASIN		CATCH BASIN	CATCH BASIN		
CURB INLET		CURB INLET	CURB INLET		
CULVERT		CULVERT	CULVERT		
PIPE ABANDONMENTS		PIPE ABANDONMENTS	PIPE ABANDONMENTS		
SURVEY BAR		SURVEY BAR	SURVEY BAR		

**LOCATION APPROVED**  
 UNDERGROUND STRUCTURES  
 SUPR. U/G STRUCTURES DATE COMMITTEE  
 NOTE: LOCATION OF UNDERGROUND STRUCTURES AS SHOWN ARE BASED ON THE BEST INFORMATION AVAILABLE. BUT NO GUARANTEE IS GIVEN THAT ALL EXISTING UTILITIES ARE SHOWN OR THAT THE GIVEN LOCATIONS ARE EXACT. CONFIRMATION OF EXISTENCE AND EXACT LOCATION OF ALL SERVICES MUST BE OBTAINED FROM THE INDIVIDUAL UTILITIES BEFORE PROCEEDING WITH CONSTRUCTION.

NO.	REVISIONS	DATE	BY
0	ISSUED FOR CONSTRUCTION	12/03/06	JP
A	ISSUED FOR REVIEW	12/02/17	JP

**AECOM**

DESIGNED BY: GSK  
 CHECKED BY: FMI  
 DRAWN BY: JP  
 APPROVED BY: BTW  
 HOR. SCALE: 1:250  
 VERT. SCALE: 1:50  
 RELEASED FOR CONSTRUCTION: KAS ZUREK  
 DATE: 2012/03/06

PROFESSIONAL'S SEAL  
 PROVINCE OF MANITOBA  
 ORIGINAL SIGNED BY: K.W. FITCHETT  
 REGISTERED PROFESSIONAL ENGINEER  
 MARCH 6, 2012  
 CONSULTANT DRAWING NO. 60239330-01-C-104-RDX.dwg

**THE CITY OF WINNIPEG**  
 WATER AND WASTE DEPARTMENT

**2012 WATERMAIN RENEWALS CONTRACT 1**

PROVENCHER BOULEVARD  
 8.0m EAST of RUE AULNEAU TO 66.8m EAST of RUE LANGEVIN

SHEET 5 OF 11  
 CITY DRAWING NUMBER: D-12869  
 REV 0

BID OPPORTUNITY NO. 135-2012