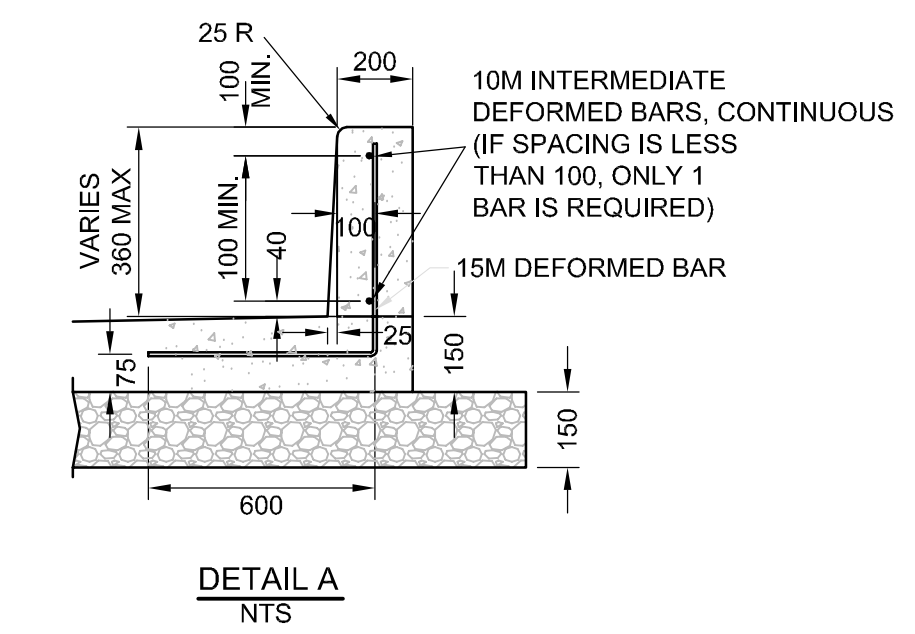
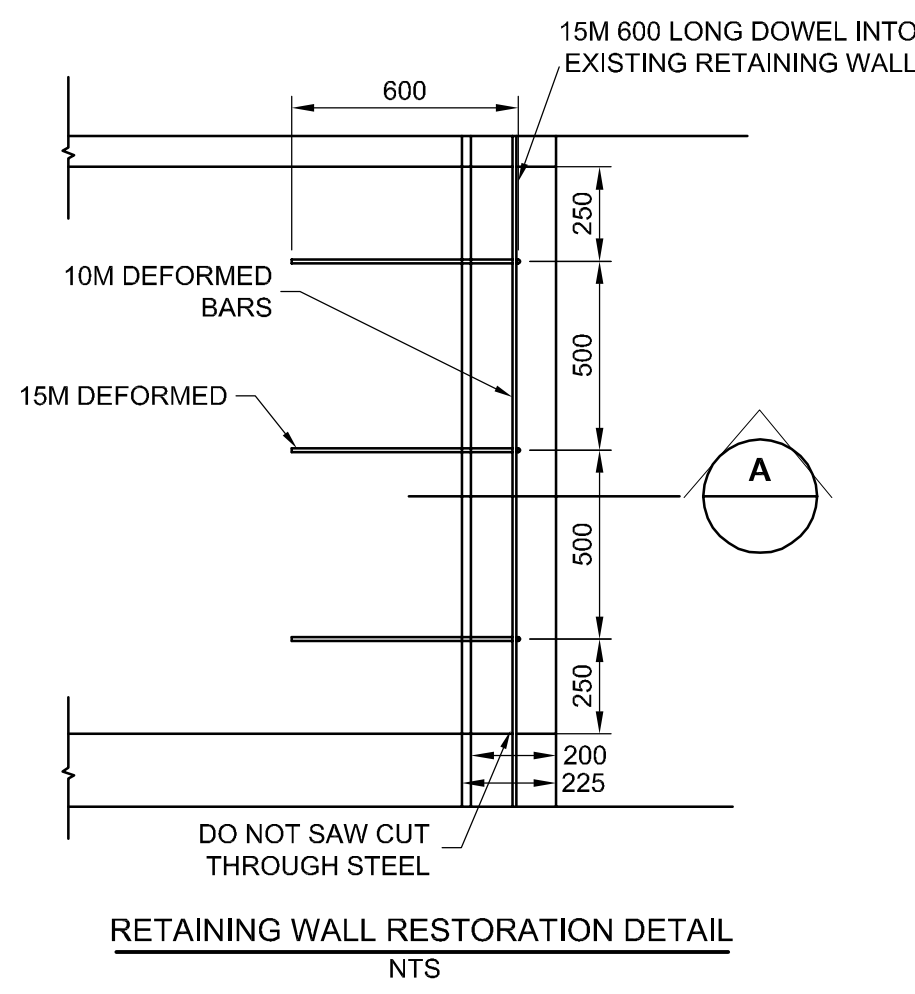
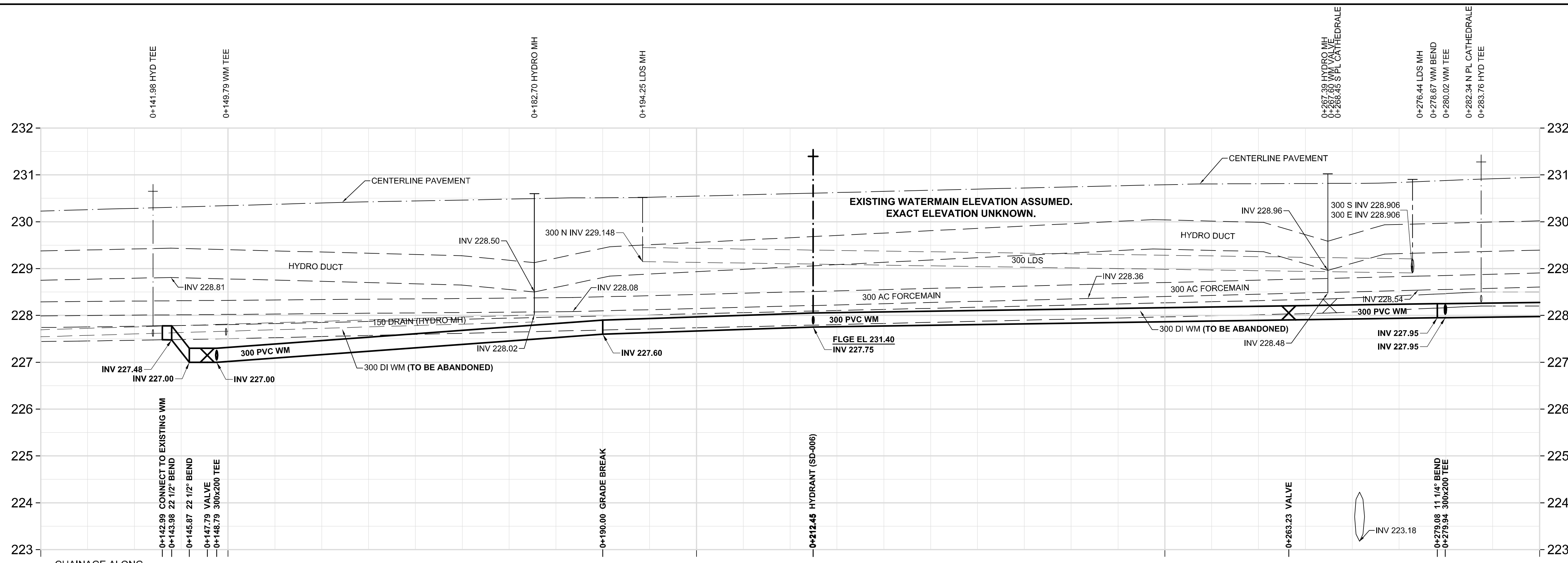


D SIZE 22" x 34" (559mm x 864mm)

PLOT: 3/6/2012 9:48:34 AM

AECOM FILE NAME: 60239330-01-C-107-RDX.dwg Saved By: [Name]

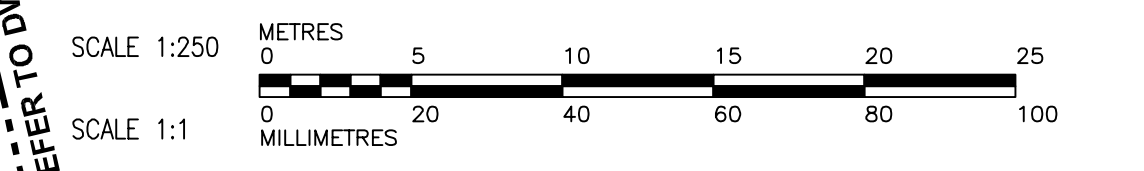


**WARNING**

IF POWER EQUIPMENT OR EXPLOSIVES ARE TO BE USED FOR EXCAVATION ON THIS PROJECT, THE CONTRACTOR MUST NOTIFY THE GAS COMPANY OF THE PROPOSED LOCATION OF EXCAVATION. TAKE PRECAUTION TO AVOID DAMAGE TO GAS COMPANY INSTALLATIONS. SEE PROVINCIAL REGULATION 140/92 FOR DETAILS.

**CONSTRUCTION NOTES:**

1. EXPOSE WATERMAIN CONNECTIONS AND CONFIRM INVERTS PRIOR TO CONSTRUCTION.
2. INSTALL WATERMAIN BY TRENCHLESS METHODS.
3. ALL MATERIALS SHALL CONFORM TO THE CITY OF WINNIPEG STANDARD CONSTRUCTION SPECIFICATIONS.
4. MINIMUM COVER TO TOP OF PROPOSED WATERMAIN SHALL BE 2.5m FROM STREET CENTERLINE.
5. INSTALL ALL HYDRANTS WITH FLANGE ELEVATION 50mm TO 150mm ABOVE FINISHED GRADE.
6. REPLACE ALL EXISTING LEAD SERVICES FROM THE PROPOSED WATERMAIN TO PROPERTY LINE.
7. NOTIFY ALL AFFECTED RESIDENTS AND BUSINESSES 24 HOURS IN ADVANCE OF ANY WATER SHUTDOWN OR DISRUPTION OF SERVICE.
8. LOCATION OF WATER SERVICES SHOWN ON DRAWINGS ARE APPROXIMATE. THE CONTRACTOR SHALL FIELD LOCATE ALL WATER SERVICES PRIOR TO CONSTRUCTION.
9. BACKFILL UNDER OR WITHIN 1.0m OF PAVEMENTS, INCLUDING SIDEWALKS SHALL BE CLASS 3 BACKFILL EXCEPT AS NOTED. BACKFILL IN BOULEVARDS SHALL BE CLASS 5 BACKFILL. BACKFILL UNDER PAVEMENT ON TACHE AVENUE SHALL BE CLASS 1.



**METRIC**  
WHOLE NUMBERS INDICATE MILLIMETRES  
DECIMALIZED NUMBERS INDICATE METRES

**AECOM**  
Certificate of Authorization  
AECOM Canada Ltd.  
No. 4671 Date: 2012/03/06

BID OPPORTUNITY NO. 135-2012

ADDRESS	DISTANCE	SIZE (mm)	SHORT & LONG	CORPORATION	REMARKS
151 DE LA CATHEDRALE AV DOMESTIC	11.58	20	2.70 L/RHL	121.90E SPL CATHEDRAL @ TACHE	SERVICE OFF DE LA CATHEDRALE
180 DE LA CATHEDRALE AV DOMESTIC	69.49	COPPER	3.70 E/HYDT @ #50		SERVICE OFF DE LA CATHEDRALE
500 TACHE AV SPRINKLER/DOMESTIC		150	9.73 N/S PL		
185 DESPINS	200		7.8m N 2ND HYD N OF DESPINS	7.8m N 2ND HYD N OF DESPINS	SERVICED OFF TACHE
185 DESPINS	150				SERVICED OFF DESPINS

EXISTING	LEGEND - PLAN	NEW	EXISTING	LEGEND - PLAN	NEW	EXISTING	LEGEND - PROFILE	NEW
150 WM	WATERMAIN	150 WM	CURB STOP	REDUCER	150 WM	WATERMAIN	HYDRANT	150 WM
300 LDS	LAND DRAINAGE SEWER	300 LDS	REDUCER	COUPLING	300 LDS	WATERMAIN	VALVE	300 LDS
250 WWS	WASTE WATER SEWER	250 WWS	ANODE	HYDRO	250 WWS	LAND DRAINAGE SEWER	VALVE	250 WWS
MANHOLE	MANHOLE	MTS	GAS	TESTHOLE	MANHOLE	WASTE WATER SEWER	VALVE	MANHOLE
CATCH BASIN	CATCH BASIN	GAS	TESTHOLE	LAMP STANDARD	CATCH BASIN	PAVEMENT CROWN	VALVE	CATCH BASIN
CURB INLET	CURB INLET	TESTHOLE	LAMP STANDARD	TREE	CURB INLET	NW PROPERTY LINE	VALVE	CURB INLET
CULVERT	CULVERT	TREE	PREVIOUS WM REPAIRS	LEGEND - PLAN	CULVERT	S/E PROPERTY LINE	VALVE	CULVERT
PIPE ABANDONMENTS	PIPE ABANDONMENTS	PREVIOUS WM REPAIRS	LEGEND - PLAN	NEW	PIPE ABANDONMENTS	NW GUTTER	VALVE	PIPE ABANDONMENTS
SURVEY BAR	SURVEY BAR	LEGEND - PLAN	NEW	EXISTING	SURVEY BAR	S/E GUTTER	VALVE	SURVEY BAR
LEGEND - PLAN	LEGEND - PLAN	LEGEND - PLAN	NEW	EXISTING	LEGEND - PLAN	LEGEND - PROFILE	VALVE	LEGEND - PROFILE

**LOCATION APPROVED**  
UNDERGROUND STRUCTURES  
SUPR. U/G STRUCTURES DATE COMMITTEE  
**NOTE:**  
LOCATION OF UNDERGROUND STRUCTURES AS SHOWN ARE BASED ON THE BEST INFORMATION AVAILABLE. BUT NO GUARANTEE IS GIVEN THAT ALL EXISTING UTILITIES ARE SHOWN OR THAT THE GIVEN LOCATIONS ARE EXACT. CONFIRMATION OF EXISTENCE AND EXACT LOCATION OF ALL SERVICES MUST BE OBTAINED FROM THE INDIVIDUAL UTILITIES BEFORE PROCEEDING WITH CONSTRUCTION.

NO.	REVISIONS	DATE	BY
0	ISSUED FOR CONSTRUCTION	12/03/06	JP
A	ISSUED FOR REVIEW	12/02/17	JP

**AECOM**  
DESIGNED BY: GSK  
CHECKED BY: FMI  
DRAWN BY: JP  
APPROVED BY: BTW  
HOR. SCALE: 1:250  
VERT. SCALE: 1:50  
DATE: 2012/03/06

PROFESSIONAL'S SEAL  
PROVINCE OF MANITOBA  
ORIGINAL SIGNED BY  
**K.W. FITCHETT**  
REGISTERED PROFESSIONAL ENGINEER  
MARCH 6, 2012  
CONSULTANT DRAWING NO.  
60239330-01-C-107-RDX.dwg

**THE CITY OF WINNIPEG**  
WATER AND WASTE DEPARTMENT  
2012 WATERMAIN RENEWALS  
CONTRACT 1  
TACHE AVENUE  
138m SOUTH OF DE LA CATHEDRALE AVENUE TO  
8m NORTH OF DE LA CATHEDRALE AVENUE  
SHEET 7 OF 11  
CITY DRAWING NUMBER  
D-12871  
REV 0