

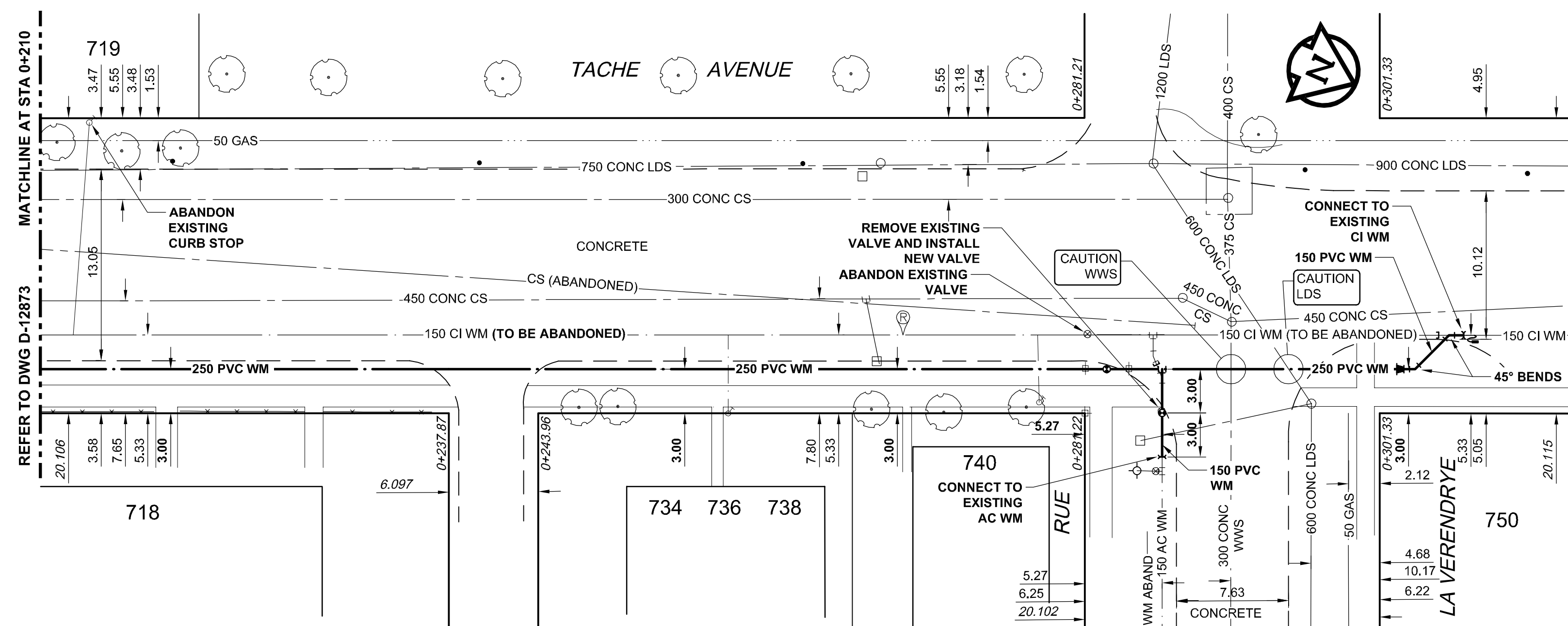
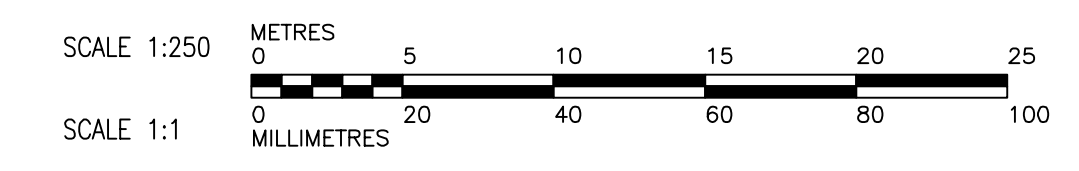
ADDRESS	DISTANCE	SIZE(mm)	SHORT & LONG	CORPORATION	REMARKS
TYPE/NATURE	PROPERTY	& TYPE	MEASUREMENT	LOCATION	
719 TACHE AV					NOT IN USE
734 TACHE AV	8.38	25	7.00 R/LHL	OPP SIC	COMMON SERV 734/736/738 TACHE
740 TACHE AV	4.88	12	0.80 R/LHL	0.80 R L COR HOUSE	
750 TACHE AV			3.50 NSL BLDG		
DOMESTIC			29.00>NNL LA VERENDRYE		

WARNING

IF POWER EQUIPMENT OR EXPLOSIVES ARE TO BE USED FOR EXCAVATION ON THIS PROJECT, THE CONTRACTOR MUST NOTIFY THE GAS COMPANY OF THE PROPOSED LOCATION OF EXCAVATION. TAKE PRECAUTION TO AVOID DAMAGE TO GAS COMPANY INSTALLATIONS. SEE PROVINCIAL REGULATION 140/92 FOR DETAILS

CONSTRUCTION NOTES:

1. EXPOSE WATERMAIN CONNECTIONS AND CONFIRM INVERTS PRIOR TO CONSTRUCTION
2. INSTALL WATERMAIN BY TRENCHLESS METHODS.
3. ALL MATERIALS SHALL CONFORM TO THE CITY OF WINNIPEG STANDARD CONSTRUCTION SPECIFICATIONS.
4. MINIMUM COVER TO TOP OF PROPOSED WATERMAIN SHALL BE 2.5m FROM STREET CENTERLINE.
5. INSTALL ALL HYDRANTS WITH FLANGE ELEVATION 50mm TO 150mm ABOVE FINISHED GRADE.
6. REPLACE ALL EXISTING LEAD SERVICES FROM THE PROPOSED WATERMAIN TO PROPERTY LINE.
7. NOTIFY ALL AFFECTED RESIDENTS AND BUSINESSES 24 HOURS IN ADVANCE OF ANY WATER SHUTDOWN OR DISRUPTION OF SERVICE.
8. LOCATION OF WATER SERVICES SHOWN ON DRAWINGS ARE APPROXIMATE. THE CONTRACTOR SHALL FIELD LOCATE ALL WATER SERVICES PRIOR TO CONSTRUCTION.
9. BACKFILL UNDER OR WITHIN 1.0m OF PAVEMENTS, INCLUDING SIDEWALKS SHALL BE CLASS 3 BACKFILL EXCEPT AS NOTED. BACKFILL IN BOULEVARDS SHALL BE CLASS 5 BACKFILL.



METRIC
WHOLE NUMBERS INDICATE MILLIMETRES
DECIMALIZED NUMBERS INDICATE METRES



BID OPPORTUNITY NO. 135-2012

EXISTING	LEGEND - PLAN	NEW	EXISTING	LEGEND - PROFILE	NEW
150 WM	WATERMAIN	150 WM	150 WM	WATERMAIN	150 WM
HYDRANT	HYDRANT	REDUCER	HYDRANT	HYDRANT	REDUCER
VALVE	VALVE	COUPLING	VALVE	VALVE	COUPLING
300 LDS	LAND DRAINAGE SEWER	ANODE	300 LDS	LAND DRAINAGE SEWER	300 LDS
250 WWS	WASTE WATER SEWER	HYDRO	250 WWS	WASTE WATER SEWER	250 WWS
MANHOLE	MANHOLE	MTS	MANHOLE	MANHOLE	MTS
CATCH BASIN	CATCH BASIN	GAS	CATCH BASIN	CATCH BASIN	GAS
CURB INLET	CURB INLET	TESTHOLE	CURB INLET	CURB INLET	TESTHOLE
CULVERT	CULVERT	LAMP STANDARD	CULVERT	CULVERT	LAMP STANDARD
PIPE ABANDONMENTS	PIPE ABANDONMENTS	TREE	PIPE ABANDONMENTS	PIPE ABANDONMENTS	TREE
SURVEY BAR	SURVEY BAR	PREVIOUS WM REPAIRS	SURVEY BAR	SURVEY BAR	PREVIOUS WM REPAIRS
LEGEND - PLAN	LEGEND - PLAN	LEGEND - PROFILE	LEGEND - PLAN	LEGEND - PROFILE	LEGEND - PROFILE

LOCATION APPROVED
UNDERGROUND STRUCTURES

SUPR. U/G STRUCTURES DATE COMMITTEE

NOTE:
LOCATION OF UNDERGROUND STRUCTURES AS SHOWN ARE BASED ON THE BEST INFORMATION AVAILABLE. BUT NO GUARANTEE IS GIVEN THAT ALL EXISTING UTILITIES ARE SHOWN OR THAT THE GIVEN LOCATIONS ARE EXACT. CONFIRMATION OF EXISTENCE AND EXACT LOCATION OF ALL INDIVIDUAL UTILITIES BEFORE PROCEEDING WITH CONSTRUCTION.

BM 34-016	ELEV. 230.003m	S.E. Cor. Tache Ave. & Rue Messenger, Tbl. In N. Conc. Foundation of Wpg. Waterworks Booster Pumping Station, 3.0 m E. & 0.2 m below base of W.W. Cor. of Bldg.
NO.	REVISIONS	YY/MM/DD BY

AECOM

DESIGNED BY: GSK
CHECKED BY: FMI

DRAWN BY: JP
APPROVED BY: BTW

HOR. SCALE: 1:250
VERT. SCALE: 1:50

RELEASED FOR CONSTRUCTION: KAS ZUREK
DATE: 2012/03/06



THE CITY OF WINNIPEG
WATER AND WASTE DEPARTMENT

2012 WATERMAIN RENEWALS CONTRACT 1

TACHE AVENUE
9m NORTH OF RUE NOTRE DAME TO RUE LA VERENDRYE

SHEET 10 OF 11
CITY DRAWING NUMBER
D-12874