

FILE NAME:

DATE:

DESCRIPTION:

PROJECT No:

ADDRESS:

NOTES :

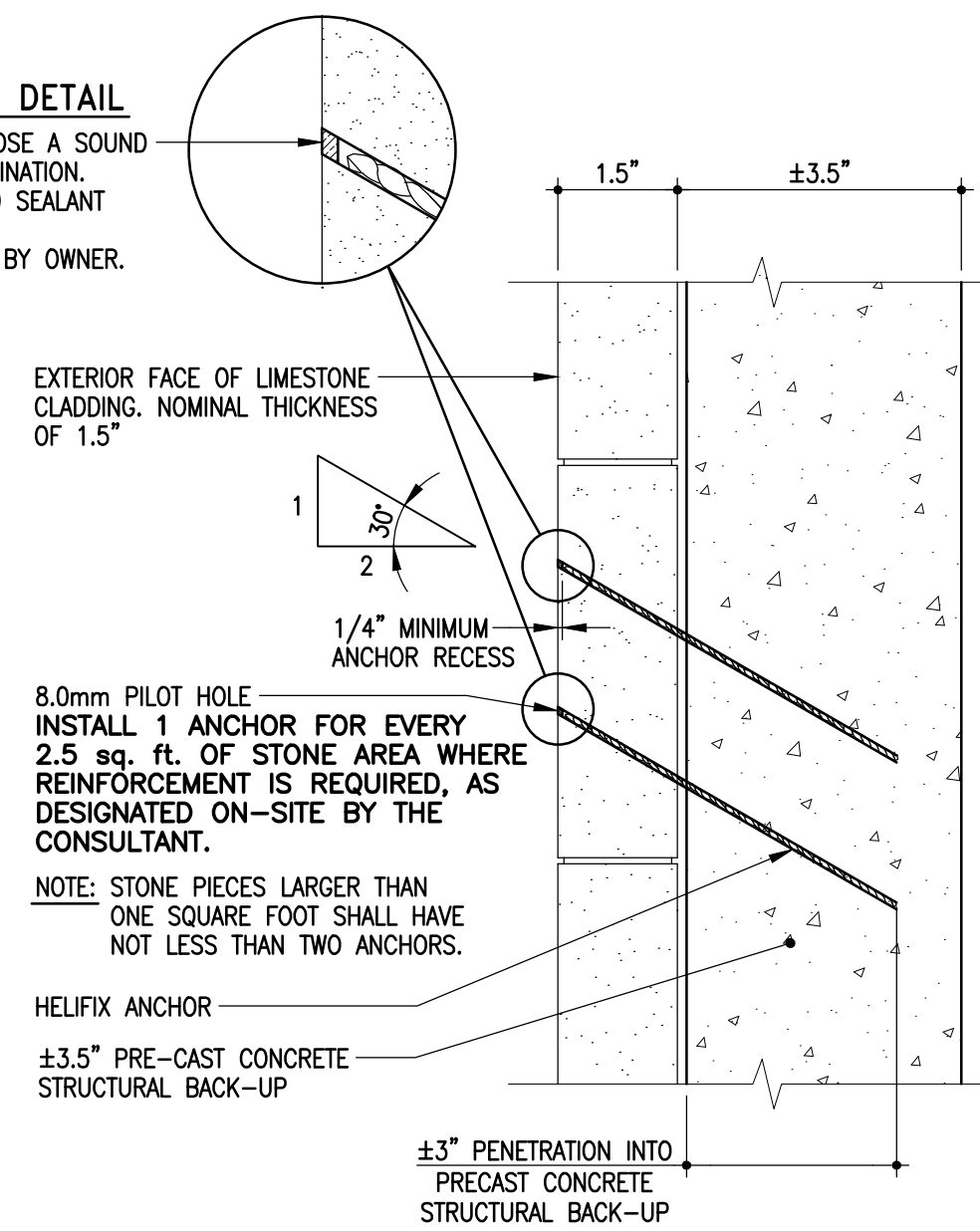
### HELIFIX INSTALLATION PROCEDURES

INSTALL HELIFIX STAINLESS STEEL TIES INTO EXTERIOR STONE CLADDING. (DRYFIX TECHNIQUE) AT SPECIFIED SPACING. PATCH ALL PENETRATIONS TO MATCH EXISTING SURFACE USING DOW CORNING 790 SEALANT.

- A 8.0mm ENTRY HOLE SHALL BE PREDRILLED THROUGH THE EXISTING STONE PANEL AND CONTINUOUSLY DRILLED INTO THE PRE-CAST CONCRETE STRUCTURAL BACK-UP TO A HORIZONTAL PENETRATION DEPTH OF NOT LESS THAN 3.00". THIS DRILL PROCEDURE IS TO BE CARRIED OUT BY MEANS OF A HIGH SPEED ELECTRIC HAMMER DRILL (3 JAW CHUCK TYPE).
- NOTE: A DRYFIX SUPPORT TOOL MAY BE REQUIRED WHEN INSTALLING LONGER LENGTHS OF HELIFIX TIE INTO DENSE CONCRETE UNITS.
- THE 10mm HELIFIX 304 STAINLESS STEEL ANCHOR SHALL THEN BE DRIVEN INTO POSITION WITH A HELIFIX "DRYFIX" POWER TOOL MOUNTED ON AN S.D.S. TYPE CONCRETE HAMMER DRILL AND RECESSED 1/4" FROM THE SURFACE. THE STONE SHALL THEN BE PATCHED AT THE LOCATIONS OF THE PENETRATIONS TO MATCH EXISTING ADJACENT STONE SURFACE AS PER SPECIFICATIONS.
- CONTRACTOR TO OBTAIN ALL RELEVANT DRILL BITS AND SETTING TOOLS FROM HELIFIX CORPORATION OF NORTH AMERICA LIMITED.
- SEE SPECIFICATION REGARDING FURTHER INFORMATION WITH RESPECT TO METHODS AND MATERIALS.

#### WEATHER SEALING DETAIL

- CLEAN SUBSTRATE TO EXPOSE A SOUND SURFACE FREE OF CONTAMINATION.
- INSTALL DOW CORNING 790 SEALANT DRY TOOLING ONLY.
- COLOUR TO BE APPROVED BY OWNER.



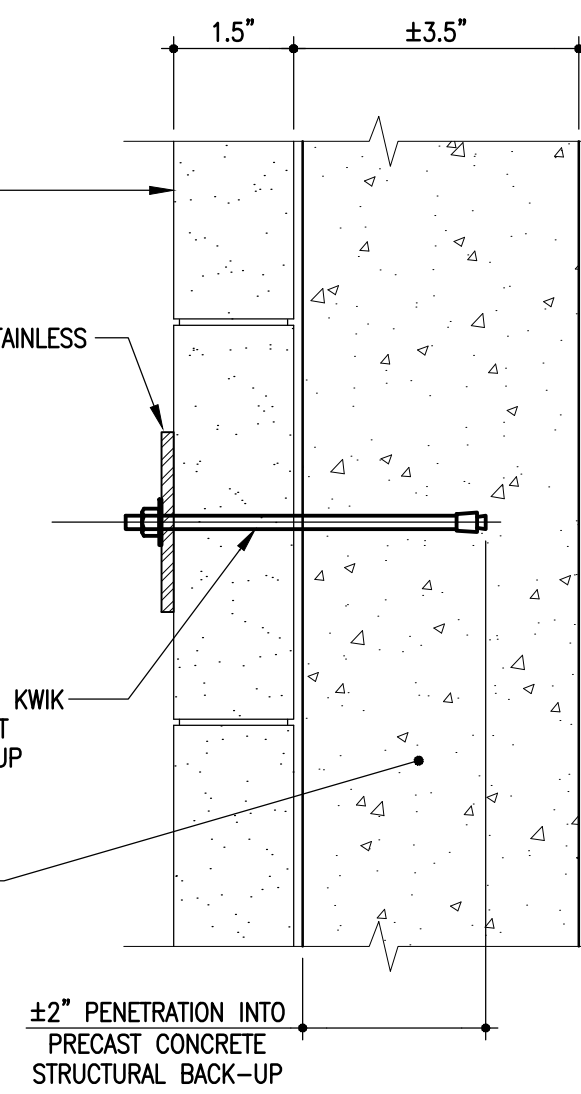
**A** HELIFIX ANCHOR DETAIL  
SK-2 N.T.S. UNIT PRICE

EXTERIOR FACE OF LIMESTONE CLADDING. NOMINAL THICKNESS OF 1.5"

- TYPE 302, 16 GAUGE THICK STAINLESS STEEL STRAPPING
- WHERE EDGE DISTANCE TO CENTRE LINE OF STRAPPING EXCEEDS 4", USE 2 ANCHORS.

TYPE 304 OR 316 10mm HILTI KWIK BOLT II. SET 2" INTO PRE-CAST CONCRETE STRUCTURAL BACK-UP

±3.5" PRE-CAST CONCRETE STRUCTURAL BACK-UP



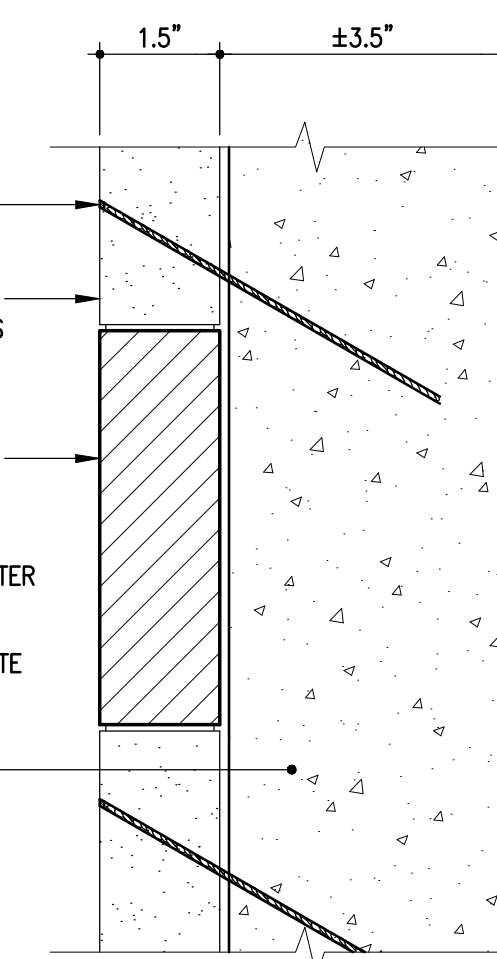
**B** HILTI KWIK BOLT 3 STRAPPING DETAIL  
SK-2 N.T.S. UNIT PRICE

8 HELIFIX ANCHORS AROUND PERIMETER OF REMOVAL AREA

EXTERIOR FACE OF LIMESTONE CLADDING. NOMINAL THICKNESS OF 1.5"

- REMOVE ENTIRE STONE PANEL IDENTIFIED BY CONSULTANT.
- DO NOT DAMAGE PRECAST CONCRETE BACKUP.
- WEATHER SEAL ENTIRE PERIMETER WITH DOW CORNING 790.
- CUT ANY REMAINING ANCHORS FLUSH WITH PRECAST CONCRETE SURFACE.

±3.5" PRE-CAST CONCRETE STRUCTURAL BACK-UP



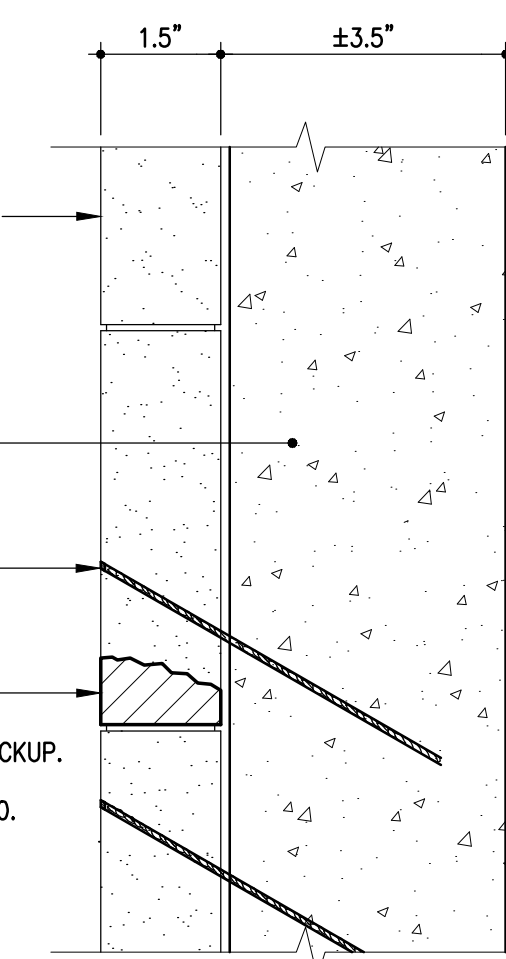
**C** STONE PANEL REMOVAL  
SK-2 N.T.S. UNIT PRICE

EXTERIOR FACE OF LIMESTONE CLADDING. NOMINAL THICKNESS OF 1.5"

±3.5" PRE-CAST CONCRETE STRUCTURAL BACK-UP

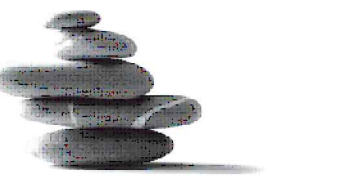
HELIFIX ANCHORS EACH SIDE (2)

- REMOVE ALL UNSOUND STONE MATERIAL IDENTIFIED BY THE CONSULTANT.
- DO NOT DAMAGE PRECAST CONCRETE BACKUP.
- WEATHER SEAL ENTIRE PERIMETER OF REMOVED STONE WITH DOW CORNING 790.



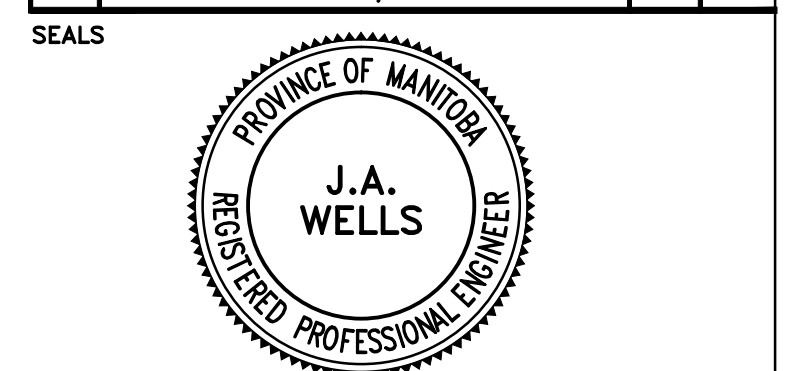
**D** REMOVAL OF SECTIONS OF STONE PANEL  
SK-2 N.T.S. UNIT PRICE

300-275 Carlton Street  
Winnipeg, Manitoba R3C 5R6  
T 204. 943. 7501  
F 204. 943. 7507  
2012-0107



**Crosier Kilgour & Partners Ltd.**  
CONSULTING STRUCTURAL ENGINEERS

NO.	REVISION/DESCRIPTION	BY	DATE
1	ISSUED FOR TENDER	SW	02.22.12



DRAWN BY	CL	CHECKED BY	APPROVED
DATE	2012.02.22	USER APPROVAL	

**CITY OF WINNIPEG**  
PLANNING, PROPERTY & DEVELOPMENT DEPARTMENT  
CIVIC ACCOMMODATIONS DIVISION  
300 - 65 GARRY ST. R3C 4K4



PROJECT  
**PUBLIC SAFETY BUILDING**  
151 PRINCESS STREET  
2012 EXTERIOR MONITORING  
WINNIPEG, MANITOBA

SHEET TITLE  
**DETAILS AND NOTES**

SCALE	PROJECT NO.	SHEET NO.
AS NOTED	2012-0107	SK-2

DRAWING SHEET SIZE: 24x36 PLOT 1:1