

- REFERENCE NOTES:**
- BASILINE IS OFFSET FROM THE NORTH PROPERTY LINES OF CORDON AVENUE FROM CORDOVA STREET TO NIAGARA STREET
 - LEGAL PLAN - L.B.I.S.
 - AECOM FIELD BOOK No. 4736
 - PAVEMENT DIMENSIONS ARE TO BACK OF CURB
 - ALL WORK TO CONFORM TO CITY OF WINNIPEG STANDARD CONSTRUCTION SPECIFICATIONS
- CONSTRUCTION NOTES:**
- PLANE EXISTING ASPHALT AND CONSTRUCT NEW ASPHALTIC CONCRETE OVERLAY (AVERAGE THICKNESS 50mm)
 - REMOVE EXISTING PAVEMENT AND CONSTRUCT NEW 230mm PLAIN DOWELLED CONCRETE PAVEMENT
 - CONSTRUCT NEW BARRIER CURB (180mm HT. SEPARATE)
 - CONSTRUCT NEW MONOLITHIC CONCRETE SPLASH STRIP (180mm HT SEPARATE)
 - CONSTRUCT NEW MODIFIED MONOLITHIC CONCRETE SPLASH STRIP (180mm HT, INTEGRAL)
 - RENEW EXISTING 100mm CONCRETE SIDEWALK
 - REMOVE EXISTING CATCHBASIN AND PLUG EXISTING LEAD
 - ADJUST EXISTING CATCH BASIN/MANHOLE TO GRADE
 - REMOVE EXISTING FRAME AND COVER AND PLACE NEW FRAME AND COVER (AP-004/AP-005/AP-006)
 - INSTALL NEW CAST IRON RISER RING
 - ADJUST EXISTING WATERMAIN VALVE BOX TO GRADE
 - INSTALL NEW DETECTABLE SURFACE WARNING TILES
 - INSTALL NEW CURB AND GUTTER INLET c/w CATCHBASIN (SD024) AND CONNECT NEW 250mm LEAD TO EXISTING LEAD
 - ADJUST EXISTING CURB STOP TO GRADE
 - REMOVE EXISTING CATCHFIT
 - REMOVE EXISTING APPROACH
 - REMOVE EXISTING CONCRETE SIDEWALK
 - RENEW BARRIER CURB (150mm REVEAL HT, DOWELLED)
 - INSTALL BUS STOP WITH CONCRETE SIDEWALK & UNIT PAVERS (SEE DETAIL 1)
 - INSTALL 150mm SUBDRAIN 12m ON EACH SIDE OF CATCHBASIN
 - INSTALL NEW CURB AND GUTTER INLET c/w CATCHBASIN (SD024) AND CONNECT NEW 250mm LEAD TO EXISTING 2750 CONCRETE STORM RELIEF SEWER
 - CONNECT EXISTING 250mm LEAD TO NEW 250 WYE CONNECTION
 - CONSTRUCT NEW 200mm PLAIN DOWELLED PAVEMENT
 - CONSTRUCT NEW 200mm REINFORCED CONCRETE PAVEMENT

150 mm W.M.	WATERMAIN	150 mm W.M.	HYDRO	PROPERTY LINE	PROPERTY LINE	PROPERTY LINE	PROPERTY LINE
○	HYDRANT	+	M.T.S.	---	---	---	---
⊕	VALVE	⊕	CONCRETE	---	---	---	---
⊙	LAND DRAINAGE SEWER	⊙	ASPHALT	---	---	---	---
⊚	WASTEWATER SEWER	⊚	PROPERTY LINE	---	---	---	---
○	MANHOLE	●	SURVEY BAR	---	---	---	---
□	CATCH BASIN	■	ELEVATION	---	---	---	---
▽	CURB INLET	▽	TREE	---	---	---	---
+	JUNCTIONS	+	SIDEWALK RAMP	---	---	---	---
—	CULVERT	—	CONCRETE SIDEWALK	---	---	---	---
—	GAS	—	FENCE	---	---	---	---
---	EXISTING	---	EXISTING	---	---	---	---
---	LEGEND - PLAN	---	LEGEND - PLAN	---	---	---	---
---	PROPOSED	---	PROPOSED	---	---	---	---
---	EXISTING	---	EXISTING	---	---	---	---
---	LEGEND - PROFILE	---	LEGEND - PROFILE	---	---	---	---
---	PROPOSED	---	PROPOSED	---	---	---	---

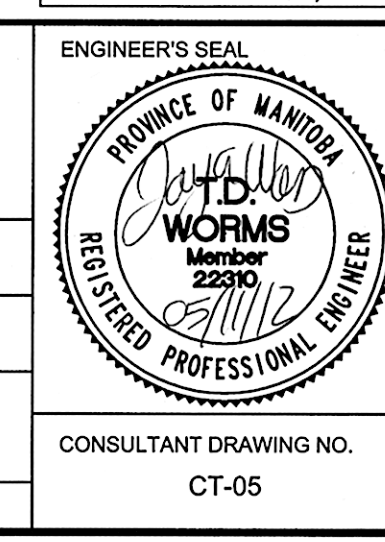
LOCATION APPROVED UNDERGROUND STRUCTURES

SUPV. U/G STRUCTURES COMMITTEE DATE

NOTE:
LOCATION OF UNDERGROUND STRUCTURES AS SHOWN ARE BASED ON THE BEST INFORMATION AVAILABLE, BUT NO GUARANTEE IS GIVEN THAT ALL EXISTING UTILITIES ARE SHOWN OR THAT THE GIVEN LOCATIONS ARE EXACT. CONFIRMATION OF EXISTENCE AND EXACT LOCATION OF ALL SERVICES MUST BE OBTAINED FROM THE INDIVIDUAL UTILITIES BEFORE PROCEEDING WITH CONSTRUCTION.

NO.	REVISIONS	DATE	BY
0	ISSUED FOR TENDER	05/11/12	TDW
A	ISSUED FOR REVIEW	03/15/12	TDW

DESIGNED BY	TDW	CHECKED BY	KWR / BC
DRAWN BY	SS	APPROVED BY	
HOR. SCALE:	1:250	RELEASED FOR CONSTRUCTION BY:	
VERTICAL:	1:10	DATE	May 11/12
DATE	2012/03/15		



THE CITY OF WINNIPEG
PUBLIC WORKS DEPARTMENT
ENGINEERING DIVISION

CORYDON AVENUE
NIAGARA STREET TO CORDOVA STREET
PAVEMENT RECONSTRUCTION

CITY DRAWING NUMBER
P-3332-01
SHEET 5 OF 8

PLAN / PROFILE
CORDOVA STREET TO STATION 0+160