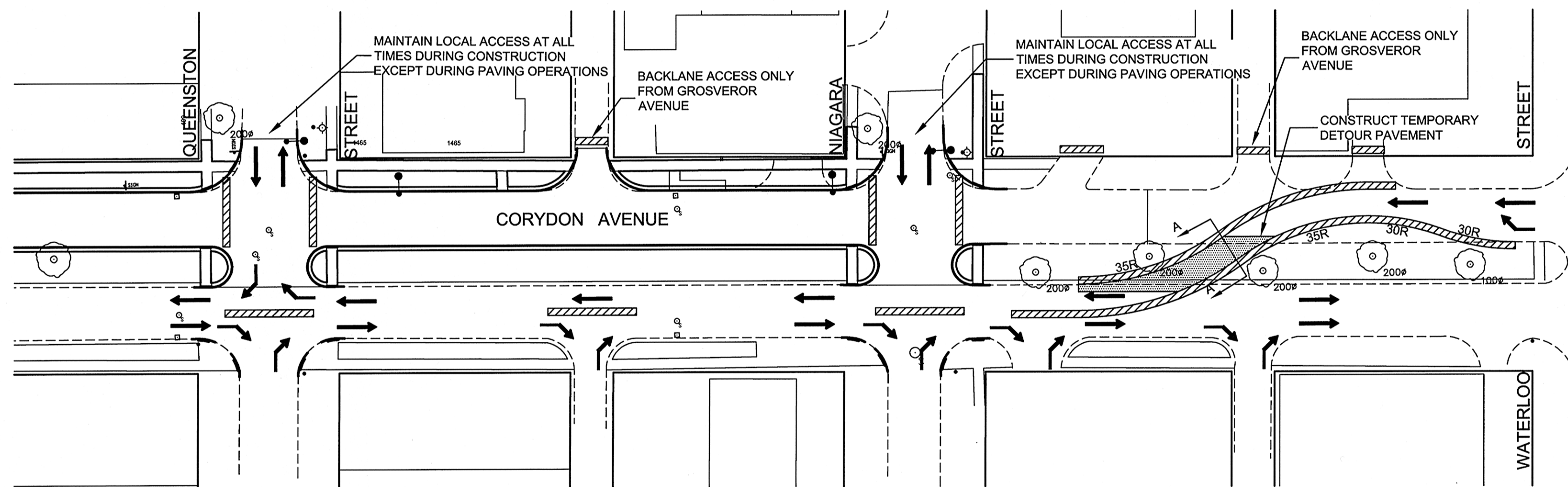


A-A TEMPORARY DETOUR PAVEMENT
NTS



CONSTRUCTION NOTES:

- (i) REMOVE EXISTING CURB AND MEDIAN
- (ii) EXCAVATE AND COMPACT EXISTING SUB-GRADE
- (iii) PLACE SEPARATION GEOTEXTILE FABRIC
- (iv) PLACE AND COMPACT 300mm OF 50mm LIMESTONE AND 75mm ASPHALT PAVEMENT
- (v) REMOVE DETOUR PAVEMENT AND BASE AT CONSTRUCTION COMPLETION, PLACE SUITABLE SITE FILL
- (vi) RESTORE CURB AND BOULEVARD
- (vii) TRAFFIC SERVICES TO SIGN THE TEMPORARY DETOUR DURING OPERATION
- (viii) THE CONTRACTOR TO SUPPLY AND ERECT TRAFFIC CONTROL SIGNINGS WITHIN THE CONSTRUCTION AREA

TRAFFIC SERVICES BARRICADE

150 mm W.M.	WATERMAIN	150 mm W.M.	HYDRO	—X—	PROPERTY LINE	—X—	PROPERTY LINE
◇	HYDRANT	+	M.T.S.	—□—	SURVEY BAR	—□—	SURVEY BAR
⊙	VALVE	⊙	CONCRETE	—■—	ELEVATION	—■—	ELEVATION
300mm L.D.S.	LAND DRAINAGE SEWER	300mm L.D.S.	ASPHALT	—◇—	35.750	—◇—	35.750
250mm W.W.S.	WASTEWATER SEWER	250mm W.W.S.	PROPERTY LINE	—○—	TREE	—○—	TREE
○	MANHOLE	●	SIDEWALK RAMP	—▲—	CONCRETE SIDEWALK	—▲—	CONCRETE SIDEWALK
□	CATCH BASIN	■	FENCE	—■—	EXISTING	—■—	EXISTING
▽	CURB INLET	▽	PROPOSED	—■—	PROPOSED	—■—	PROPOSED
—+—	JUNCTIONS	—+—	EXISTING	—■—	PROPOSED	—■—	PROPOSED
—+—	CULVERT	—+—	PROPOSED	—■—	EXISTING	—■—	EXISTING
—+—	GAS	—+—	PROPOSED	—■—	PROPOSED	—■—	PROPOSED
—+—	EXISTING	—+—	PROPOSED	—■—	PROPOSED	—■—	PROPOSED

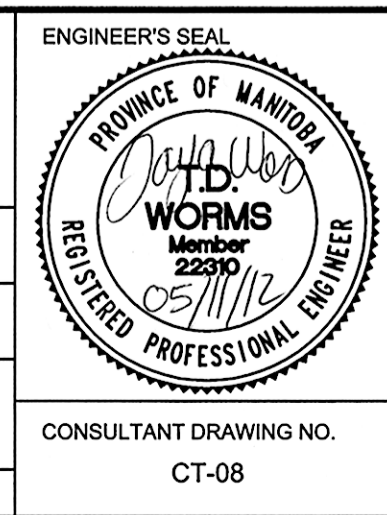
LOCATION APPROVED UNDERGROUND STRUCTURES

SUPV. U/G STRUCTURES COMMITTEE DATE

NOTE:
LOCATION OF UNDERGROUND STRUCTURES AS SHOWN ARE BASED ON THE BEST INFORMATION AVAILABLE. BUT NO GUARANTEE IS GIVEN THAT ALL EXISTING UTILITIES ARE SHOWN OR THAT THE GIVEN LOCATIONS ARE EXACT. CONFIRMATION OF EXISTENCE AND EXACT LOCATION OF ALL SERVICES MUST BE OBTAINED FROM THE INDIVIDUAL UTILITIES BEFORE PROCEEDING WITH CONSTRUCTION.

B.M. 51-027	S.E. Cor. of Corydon Ave. & line E. of Cordova St. 10m to W. of C. of Bldg. (Winnipeg Public Library).
ELEV. 233.538	
NO.	REVISIONS
DATE	DATE
BY	BY

DESIGNED BY	TDW	CHECKED BY	KWR / BC
DRAWN BY	SS	APPROVED BY	
HOR. SCALE:	1:500	RELEASED FOR CONSTRUCTION BY:	
VERTICAL:	1:500	DATE	2012/03/15



THE CITY OF WINNIPEG
PUBLIC WORKS DEPARTMENT
ENGINEERING DIVISION

CORYDON AVENUE WESTBOUND
NIAGARA STREET TO CORDOVA STREET
PAVEMENT RECONSTRUCTION

CITY DRAWING NUMBER P-3332-04
SHEET 8 OF 8

CONSTRUCTION STAGING
CAMPBELL STREET TO WATERLOO STREET

CONSULTANT DRAWING NO. CT-08

METRIC
WHOLE NUMBERS INDICATE MILLIMETRES
DECIMALIZED NUMBERS INDICATE METRES