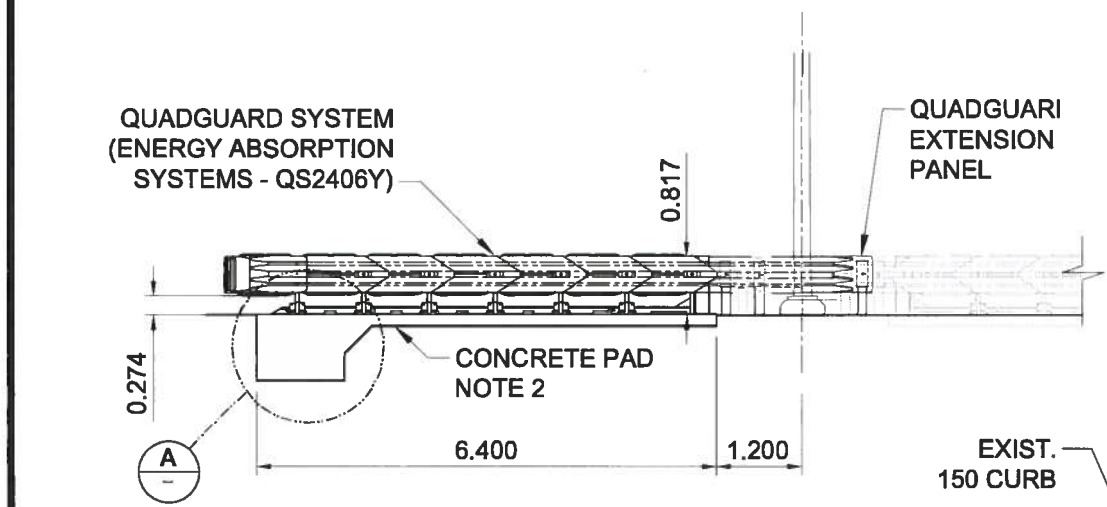


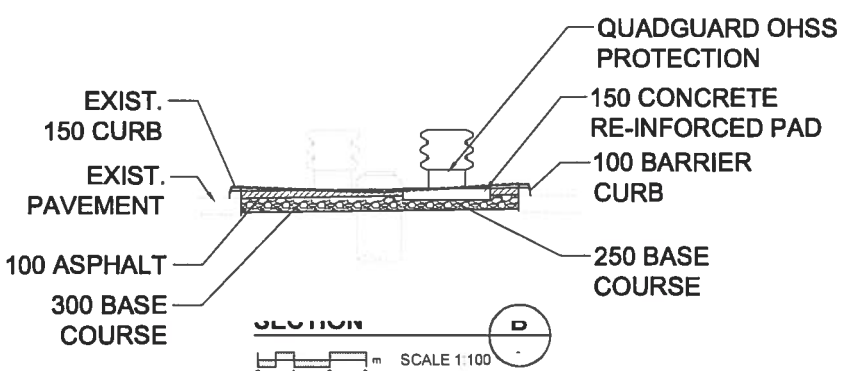
SITE PLAN - CRASH GUARD LAYOUT

HORIZONTAL SCALE 1:100



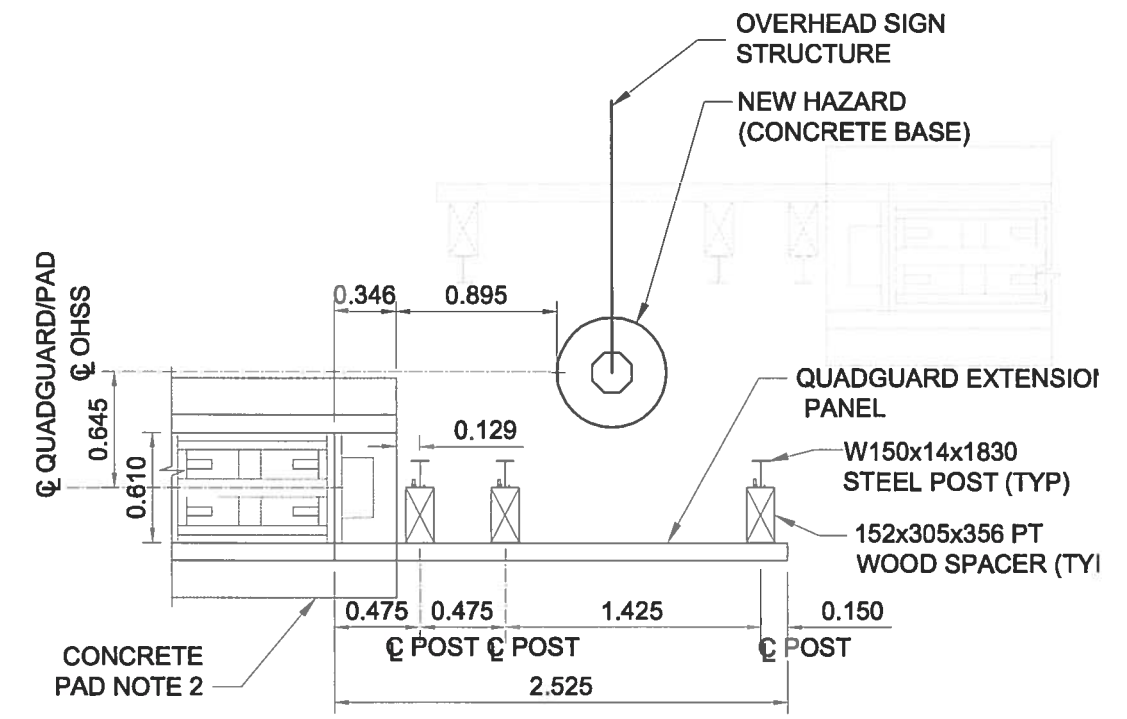
SITE ELEVATION - LOOKING EAST

HORIZONTAL SCALE 1:100



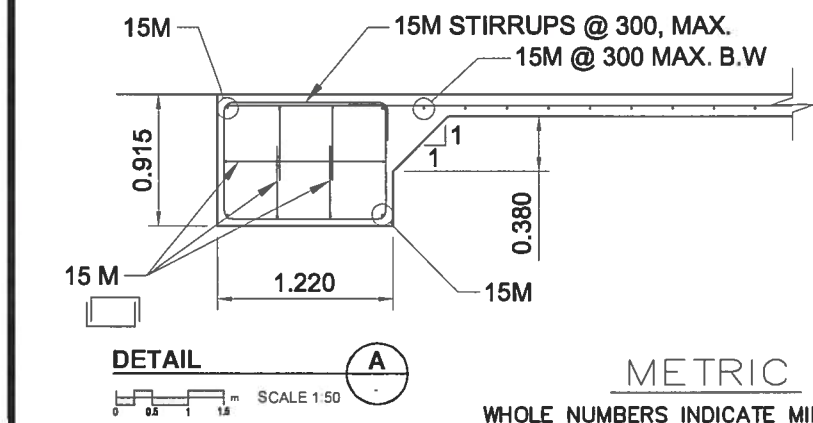
SECTION D

SCALE 1:100



QUADGUARD EXTENSION PANEL

SCALE 1:40



DETAIL A

SCALE 1:50

METRIC

WHOLE NUMBERS INDICATE MILLIMETRES
DECIMALIZED NUMBERS INDICATE METRES

NOTES:

1. CURB SHALL BE REMOVED AND REPLACED WITH SD-205 BARRIER CURB (100 HEIGHT) ALONG ENTIRE LENGTH OF QUADGUARD SYSTEM. CURB SHALL ALSO BE REMOVED AND REPLACED WITH SD-205 BARRIER CURB (100 HEIGHT) 15m IN FRONT OF QUADGUARD SYSTEM IN THE DIRECTION OF TRAVEL.
2. CONCRETE PAD SHALL BE 150 MIN. REINFORCED 32 MPa PORTLAND CEMENT CONCRETE OVER 250 BASE COURSE. REINFORCING SHALL BE 15 M BARS @ 300 O.C. B.W. TRANSVERSE JOINTS SHALL LOCATED EVERY 1500 O.C..
3. CONTRACTOR TO CONSTRUCT CONCRETE PAD AND RELATED SURFACE WORKS IN ACCORDANCE WITH CONTRACT SPECIFICATION E9.
4. CONTRACTOR SHALL SEED DISTURBED AREAS IN ACCORDANCE WITH CONTRACT SPECIFICATION E6.
5. ALL ITEMS NOT INCLUDED IN CONTRACT SPECIFICATION SHALL BE CONSTRUCTED IN ACCORDANCE WITH THE CITY OF WINNIPEG STANDARD CONSTRUCTION SPECIFICATIONS.
6. THE CRASH ATTENUATION BARRIER SHOWN IS THE QUADGUARD AND RELATED CONCRETE DETAILS ARE FOR ILLUSTRATION PURPOSES. THE TAU- II IS EQUAL BUT WILL REQUIRE THE MANUFACTURER TO PREPARE APPROPRIATE DETAILS FOR THE CONTRACT ADMINISTRATORS APPROVAL.

100 ASPHALT WITH 300 MIN. BASE COURSE ON COMPACTED SUBGRADE

B.M. ELEV.	NO.	REVISIONS	DATE	BY
	0	ISSUED FOR TENDER	12/01/30	BDK

AECOM			
DESIGNED BY	BDK	CHECKED BY	TGS
DRAWN BY	PAAP	APPROVED BY	
HOR. SCALE:	AS SHOWN	RELEASED FOR CONSTRUCTION BY:	
VERTICAL:	NA		
ISSUED FOR TENDER	12/01/30	DATE	2011/08/29

ENGINEER'S SEAL

CONSULTANT DRAWING NO.

THE CITY OF WINNIPEG
PUBLIC WORKS DEPARTMENT

Winnipeg

INKSTER BOULEVARD
WIDENING PROJECT
BROOKSIDE BOULEVARD TO
KEEWATIN STREET

STRUCTURE NO. S758
QUADGUARD DETAILS

CITY DRAWING NUMBER
S758-11-02
SHEET 2 OF 8