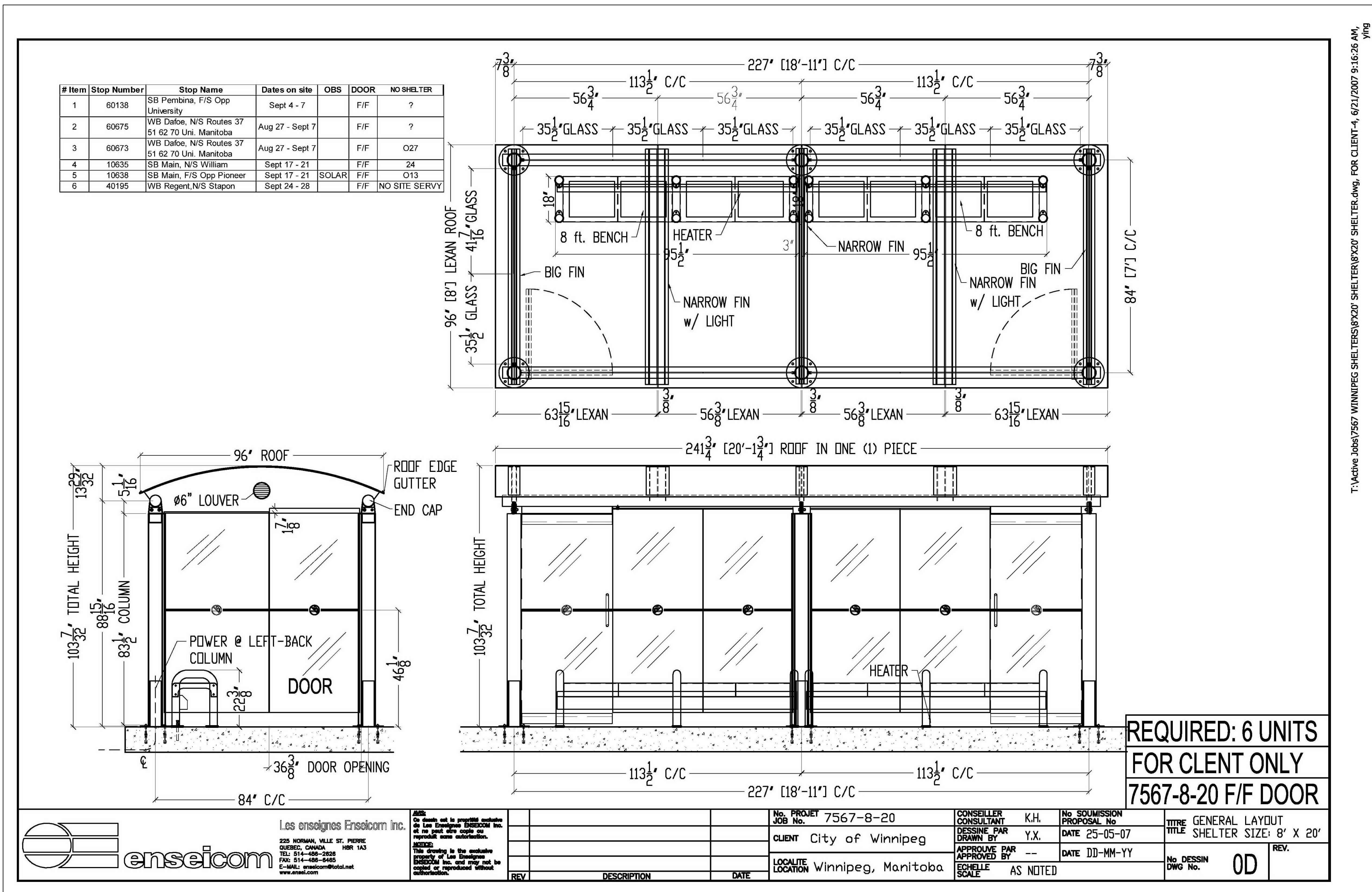


NOTE: DOORS MAY BE ON ANY WALL AND ON EITHER END. CONFIRM WITH CONTRACT ADMINISTRATOR PRIOR TO MANUFACTURE



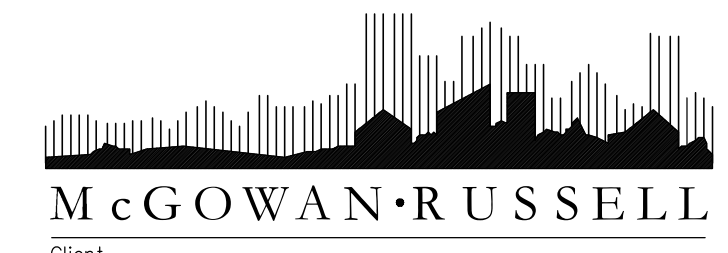
T:\Active Jobs\7567 WINNIPEG SHELTERS\8'x20' SHELTER.dwg, FOR CLIENT-1, 6/21/2007 9:16:26 AM, ymg

REQUIRED: 6 UNITS FOR CLIENT ONLY
7567-8-20 F/F DOOR

enseicom
Les enseignes Enseicom Inc.
225 NORMAN, VILLE ST. PIERRE
QUEBEC, CANADA H3R 1A3
TEL: 514-488-2628 H3R 1A3
FAX: 514-488-9448
E-MAIL: enseicom@total.net
www.enseicom.com

NO. PROJET	7567-8-20	CONSEILLER	K.H.	NO SOUMISSION	
JOB No.		CONSULTANT		PROPOSAL No.	
CLIENT	City of Winnipeg	DESINE PAR	Y.X.	DATE	25-05-07
LOCALITE	Winnipeg, Manitoba	APPROUVE PAR	--	DATE	DD-MM-YY
REV.	DESCRIPTION	DATE	LOCALITE	Winnipeg, Manitoba	ECHELLE
					AS NOTED

No.	Revisions	Date	By
12-20-11	Scale	1:200	
Designed By	MD	Drawn By	MD
Checked By		Checked By	JW



WINNIPEG TRANSIT
Project Title
BUS STOP IMPROVEMENTS 2012

Sheet Title
DESIGN & LAYOUT 8'x20' SHELTERS
Project No. 06-029
Drawing No. TS-2