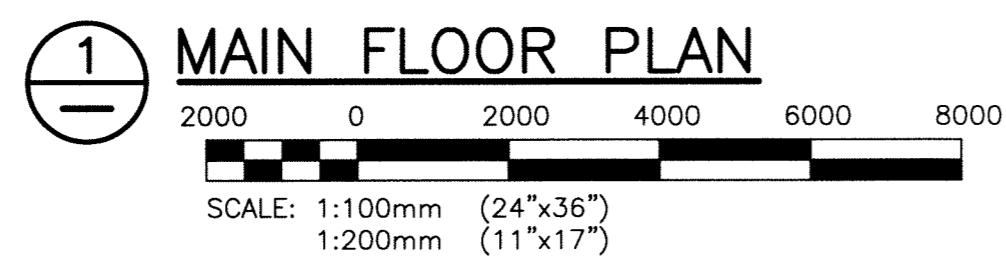


- NOTES:**
1. PROVIDE 120V POWER CONNECTIONS FOR THE NEW DDC AND ADDITIONAL REMOTE CONTROLLERS. CONTRACTOR TO COORDINATE WITH CONTROLS SUBCONTRACTOR FOR THE QUANTITY AND LOCATION OF ALL REQUIRED CONNECTION POINTS.
 2. PROVIDE CONDUIT FOR ALL CONTROL WIRING. CONTRACTOR SHALL COORDINATE CONDUIT REQUIREMENTS WITH CONTROLS SUBCONTRACTOR AS REQUIRED.
 3. REFER TO MECHANICAL DRAWINGS FOR EXACT LOCATION OF ALL NEW AND EXISTING MECHANICAL EQUIPMENT.
 4. ALL POWER CONNECTIONS TO BE EXTENDED TO THE NEAREST POWER PANEL AS REQUIRED. CONTRACTOR TO CONFIRM LOADING ON THE EXISTING PANEL PRIOR TO CONNECTION. ALL PANEL SCHEDULES SHALL BE UPDATED ACCORDINGLY.
 5. REMOVE AND DISPOSE OF ALL ELECTRICAL EQUIPMENT ABANDONED BY DEMOLITION OF MECHANICAL (SEE MECHANICAL DEMOLITION DRAWINGS). THIS INCLUDES ALL CONDUIT, WIRING, SWITCHES, CONTACTORS, ETC. NO LONGER IN USE. CONTRACTOR SHALL TURN OVER JOHNSON CONTROLS CABINET AT COMPRESSOR TO THE CITY.
 6. PROVIDE ALL REQUIRED FIRESEALING FOR ALL NEW ELECTRICAL WALL PENETRATIONS AND ANY OPENING FROM REMOVED ELECTRICAL EQUIPMENT TO MAINTAIN EXISTING FIRE SEPARATION RATINGS.
 7. PANEL DP-600-M FED FROM THIS LOCATION.

- LEGEND:**
- 3Ø MOTOR LOAD
 - 1Ø LOAD
 - LOAD RATED DISCONNECT BY ELECTRICAL (WEATHERPROOF WHERE OUTDOORS ON ROOF)

File Name: P:\Projects\2011\11-0107-02\Doc.Control\ToBeIssued\DWG\11-0107-02_P2-E01-Rev 0.dwg - Tab: P2-E01 Plotted By: DDeroche 12/04/11 [Wed 3:43pm]



| | | | |
|-----------------------|----------|----------------------------|--|
| B.M. ELEV. | | | |
| DESIGNED BY | AP | CHECKED BY | |
| DRAWN BY | GCN | APPROVED BY | |
| HOR. SCALE: | AS SHOWN | RELEASED FOR CONSTRUCTION: | |
| VERTICAL: | | DATE | |
| NO. ISSUED FOR TENDER | 12/04/11 | DATE | |
| NO. REVISIONS | | DATE | |

KGS GROUP CONSULTING ENGINEERS & PROJECT MANAGERS
WINNIPEG (204) 896-1209
THUNDER BAY (807) 345-2233

ENGINEER'S SEAL
PAUL KREMLA
Member 23235
PROFESSIONAL ENGINEER

CONSULTANT DRAWING NO. **P2-E01**

THE CITY OF WINNIPEG
PUBLIC WORKS DEPARTMENT

PROJECT TITLE: **FORT ROUGE LEISURE CENTRE HVAC UPGRADE - PHASE 2**

MAIN FLOOR PLAN POWER ARRANGEMENT

SHEET OF **001** OF **001**
COMPUTER FILE NAME: **11-0107-02-P2-E01**
CITY DRAWING NUMBER