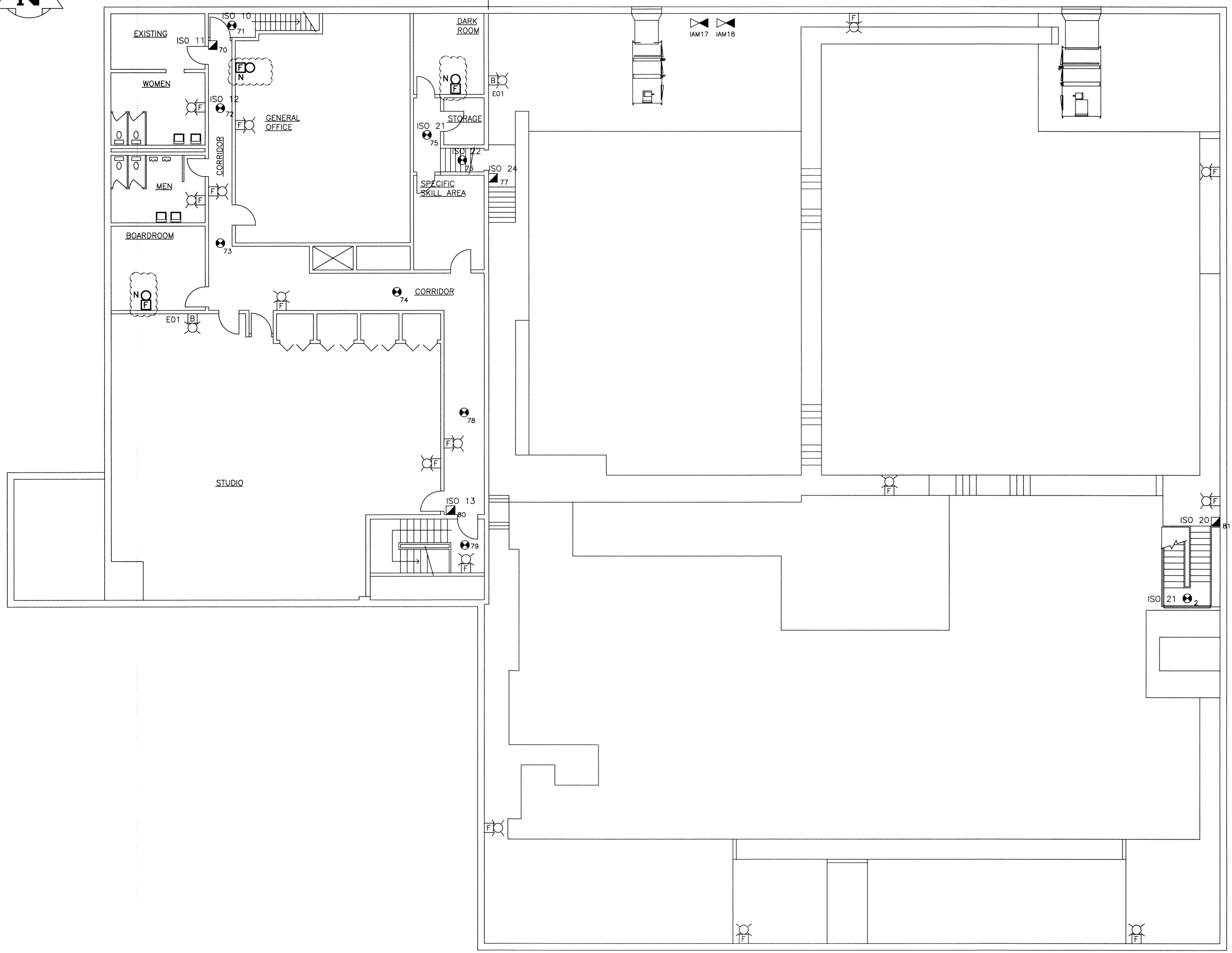


← WEST WING EAST WING →



NOTES:
1. ADD NEW FIRE ALARM BELLS AS SHOWN.

- LEGEND:**
- MAIN FIRE ALARM PANEL
 - SMOKE DETECTOR
 - HEAT DETECTOR
 - MANUAL PULLSTATION
 - FIRE ALARM STROBE LIGHT
 - FIRE ALARM BELL (12")
 - FIRE ALARM BELL (12") AND STROBE LIGHT

File Name: P:\Projects\2011\11-0107-02\Dec.Control\ToBalsaus\DWG\11-0107-02_P2-E04-Rev 0.dwg - Tab: P2-E04 Plotted By: DDeroche 12/03/27 [Tue 3:33pm]

1 MEZZANINE/SECOND FLOOR PLAN

SCALE: 1:100mm (24"x36")
1:200mm (11"x17")

APEGM
Certificate of Authorization
KGS Group
No. 245

B.M.			
ELEV.			
DESIGNED BY	AP	CHECKED BY	<i>[Signature]</i>
DRAWN BY	GCN	APPROVED BY	<i>[Signature]</i>
ISSUED FOR TENDER	12/03/27	RELEASED FOR CONSTRUCTION:	
NO. REVISIONS	DATE	DATE	DATE

KGS GROUP
CONSULTING ENGINEERS & PROJECT MANAGERS
WINNIPEG (204) 896-1209
THUNDER BAY (807) 345-2233

HOR. SCALE: AS SHOWN
VERTICAL: .

ENGINEER'S SEAL

CONSULTANT DRAWING NO.
P2-E04

THE CITY OF WINNIPEG
PUBLIC WORKS DEPARTMENT
Winnipeg

PROJECT TITLE: FORT ROUGE LEISURE CENTRE HVAC UPGRADES - PHASE 2

SECOND/MEZZANINE FLOOR PLAN
FIRE ALARM ARRANGEMENT

SHEET OF	001 OF 001
COMPUTER FILE NAME	11-0107-02-P2-E04
CITY DRAWING NUMBER	