

0+75
0+79.462 N E OF GRAFF ST

0+82.97 INSTALL 250x250x190 TEE
0+83.13 REMOVE EXIST 150x250x250 TEE
0+84.52 REMOVE EXIST 150-11.25" BEND
0+84.52 INSTALL 150 VALVE
0+97.25 INSTALL 150 VALVE
0+97.25 ABANDON EXIST VALVE
0+98.69 REMOVE EXIST HYDRANT
1+00 S E OF GRAFF PL
1+00.23 INSTALL HYDRANT (SD-008)

1+25

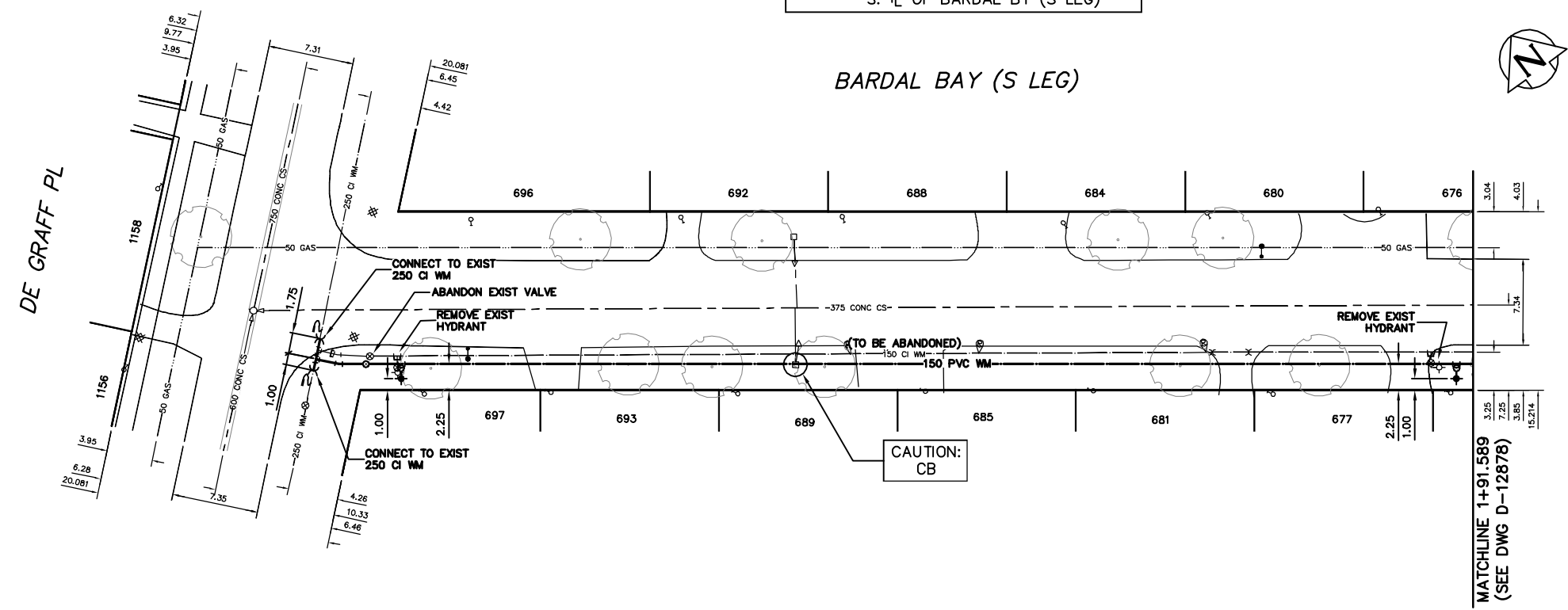
1+45.00 GRADE CHANGE

1+50

1+69.35 EXIST COUPLING
1+72.45 EXIST COUPLING
1+75

1+87.98 REMOVE EXIST HYDRANT
1+90.15 INSTALL HYDRANT (SD-006)
1+91.589 MATCH-LINE

NOTE: CHAINAGES SHOWN ARE ALONG S. E. OF BARDAL BY (S LEG)

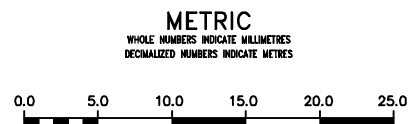


WATER SERVICE INFORMATION

ADDRESS	MATERIAL (STREET)	SIZE (mm) (MATERIAL)	SHORT & LONG MEASUREMENT	CORP. LOCATION	REMARKS
697 BARDAL BAY	-	20	2.42 E OF W HL	-	-
RESIDENTIAL	-	COPPER	5.47 EEL DE GRAFF	-	-
696 BARDAL BAY	-	20	5.28 W OF W HL	-	-
RESIDENTIAL	-	COPPER	6.19 EEL DE GRAFF	-	-
695 BARDAL BAY	-	20	2.22 W OF W HL	-	-
RESIDENTIAL	-	COPPER	16.26 EEL DE GRAFF	-	-
692 BARDAL BAY	-	20	1.76 E OF W HL	-	-
RESIDENTIAL	-	COPPER	24.12 EEL DE GRAFF	-	-
689 BARDAL BAY	-	20	0.79 E OF W HL	-	-
RESIDENTIAL	-	COPPER	32.23 EEL DE GRAFF	-	-
688 BARDAL BAY	-	20	OFF OF W HL	-	-
RESIDENTIAL	-	COPPER	37.89 EEL DE GRAFF	-	-
685 BARDAL BAY	-	20	0.30 W OF W HL	-	-
RESIDENTIAL	-	COPPER	48.23 EEL DE GRAFF	-	-
684 BARDAL BAY	-	20	0.5 W OF W HL	-	-
RESIDENTIAL	-	COPPER	56.76 EEL DE GRAFF	-	-
681 BARDAL BAY	-	20	0.30 E OF W HL	-	-
RESIDENTIAL	-	COPPER	62.57 EEL DE GRAFF	-	-
680 BARDAL BAY	-	20	0.50 E OF W HL	-	-
RESIDENTIAL	-	COPPER	69.04 EEL DE GRAFF	-	-
677 BARDAL BAY	-	20	0.40 E OF W HL	-	-
RESIDENTIAL	-	COPPER	83.63 EEL DE GRAFF	-	-
676 BARDAL BAY	-	20	4.43 W OF W HL	-	-
RESIDENTIAL	-	COPPER	77.92 EEL DE GRAFF	-	-
673 BARDAL BAY	-	20	OFF OF W HL	-	-
RESIDENTIAL	-	COPPER	93.06 EEL DE GRAFF	-	-
1156 DE GRAFF	-	20	2.92 M OF N HL	-	-
RESIDENTIAL	-	COPPER	1.97 NSL BARDAL	-	-
1158 DE GRAFF	-	20	1.57 S OF N HL	-	-
RESIDENTIAL	-	COPPER	1.76 NSL BARDAL	-	-

* SERVICES TO BE RENEWED TO E. ALL OTHERS TO BE RECONNECTED

VALVES TO BE COUNTERCLOCKWISE TO CLOSE (RED OPERATING NUT)



WARNING
IF POWER EQUIPMENT OR EXPLOSIVES ARE TO BE USED FOR EXCAVATION ON THIS PROJECT THE CONTRACTOR MUST:
1) NOTIFY THE GAS COMPANY OF THE PROPOSED LOCATION OF EXCAVATION.
2) TAKE PRECAUTION TO AVOID DAMAGE TO GAS COMPANY INSTALLATIONS.
SEE PROVINCIAL REGULATION 21072 FOR DETAILS

LOCATION APPROVED UNDERGROUND STRUCTURES
SUPV. U/G STRUCTURES COMMITTEE DATE
NOTE:
LOCATION OF UNDERGROUND STRUCTURES AS SHOWN ARE BASED ON THE BEST INFORMATION AVAILABLE BUT NO GUARANTEE IS GIVEN THAT ALL EXISTING UTILITIES ARE SHOWN OR THAT THE GIVEN LOCATIONS ARE EXACT. CONFIRMATION OF EXISTENCE AND EXACT LOCATION OF ALL SERVICES MUST BE OBTAINED FROM THE INDIVIDUAL UTILITIES BEFORE PROCEEDING WITH CONSTRUCTION.

B.M. ELEV.	CONSTRUCTION COMPLETION DATE: YYYY MM DD

DESIGNED BY	CHECKED BY
NC	SC

ENGINEER'S SEAL
ORIGINAL SIGNED BY S.R.J. COURNOYER 12-03-27
CONSULTANT DRAWING NUMBER

THE CITY OF WINNIPEG
WATER AND WASTE DEPARTMENT
ENGINEERING DIVISION
2012 WATERMAIN RENEWALS
BARDAL BAY (S LEG)
DE GRAFF PLACE TO 92 E OF DE GRAFF PLACE
SHEET 2 OF 14
CITY DRAWING NUMBER
D-12877