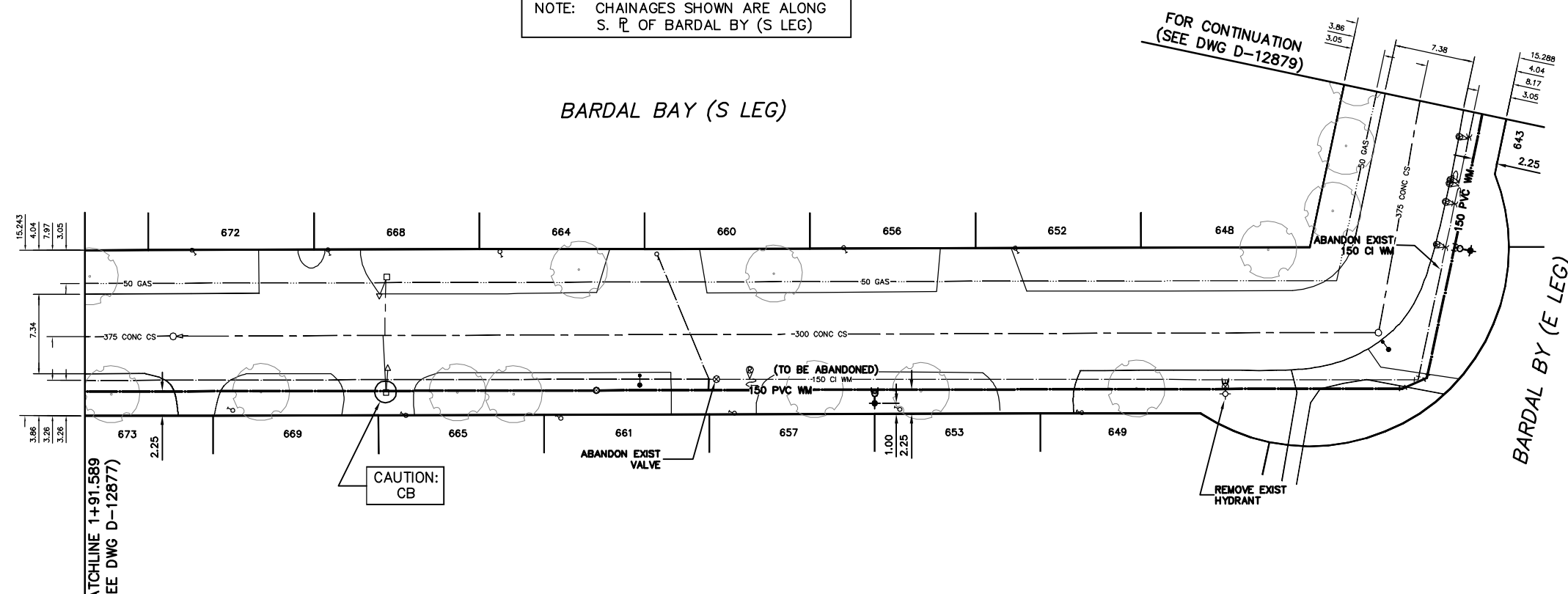


NOTE: CHAINAGES SHOWN ARE ALONG S. R. OF BARDAL BY (S LEG)

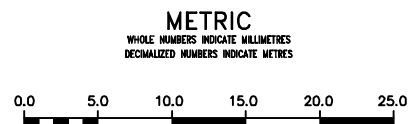


WATER SERVICE INFORMATION

ADDRESS	SIZE (mm) MATERIAL (STREET)	SIZE (mm) MATERIAL (PROP.)	SHORT & LONG MEASUREMENT	CORP. LOCATION	REMARKS
672 BARDAL BAY	-	20	2.62 E OF W HL	-	-
RESIDENTIAL	-	COPPER	104.95 EEL DE GRAFF	-	-
669 BARDAL BAY	-	20	OPP OF W HL	-	-
RESIDENTIAL	-	COPPER	108.61 EEL DE GRAFF	-	-
668 BARDAL BAY	-	20	4.20 W OF W HL	-	-
RESIDENTIAL	-	COPPER	117.45 EEL DE GRAFF	-	-
665 BARDAL BAY	-	20	OPP OF W HL	-	-
RESIDENTIAL	-	COPPER	124.51 EEL DE GRAFF	-	-
664 BARDAL BAY	-	20	0.50 E OF W HL	-	-
RESIDENTIAL	-	COPPER	133.24 EEL DE GRAFF	-	-
661 BARDAL BAY	-	20	0.40 E OF W HL	-	-
RESIDENTIAL	-	COPPER	138.74 EEL DE GRAFF	-	-
660 BARDAL BAY	-	20	4.41 W OF W HL	-	-
RESIDENTIAL	-	COPPER	147.77 EEL DE GRAFF	4.75 W OF S/C	-
657 BARDAL BAY	-	20	1.44 E OF W HL	-	-
RESIDENTIAL	-	COPPER	154.77 EEL DE GRAFF	-	-
656 BARDAL BAY	-	20	1.59 E OF W HL	-	-
RESIDENTIAL	-	COPPER	164.86 EEL DE GRAFF	-	-
653 BARDAL BAY	-	20	2.62 W OF W HL	-	-
RESIDENTIAL	-	COPPER	170.64 EEL DE GRAFF	-	-
652 BARDAL BAY	-	20	2.92 W OF W HL	-	-
RESIDENTIAL	-	COPPER	180.86 EEL DE GRAFF	-	-
649 BARDAL BAY	-	20	0.60 E OF W HL	-	-
RESIDENTIAL	-	COPPER	186.82 EEL DE GRAFF	-	-

* SERVICES TO BE RENEWED TO R. ALL OTHERS TO BE RECONNECTED

VALVES TO BE COUNTERCLOCKWISE TO CLOSE (RED OPERATING NUT)



WARNING
IF POWER EQUIPMENT OR EXPLOSIVES ARE TO BE USED FOR EXCAVATION ON THIS PROJECT THE CONTRACTOR MUST:
1) NOTIFY THE GAS COMPANY OF THE PROPOSED LOCATION OF EXCAVATION.
2) TAKE PRECAUTION TO AVOID DAMAGE TO GAS COMPANY INSTALLATIONS.
SEE PROVINCIAL REGULATION 21072 FOR DETAILS

LOCATION APPROVED UNDERGROUND STRUCTURES
SUPV. U/G STRUCTURES COMMITTEE DATE
NOTE: LOCATION OF UNDERGROUND STRUCTURES AS SHOWN ARE BASED ON THE BEST INFORMATION AVAILABLE BUT NO GUARANTEE IS GIVEN THAT ALL EXISTING UTILITIES ARE SHOWN OR THAT THE GIVEN LOCATIONS ARE EXACT. CONFIRMATION OF EXISTENCE AND EXACT LOCATION OF ALL SERVICES MUST BE OBTAINED FROM THE INDIVIDUAL UTILITIES BEFORE PROCEEDING WITH CONSTRUCTION.

NO.	REVISIONS	DATE	BY

DESIGNED BY	NC	CHECKED BY	SC
DRAWN BY	RS	APPROVED BY	KZ
SCALE:	RELEASED FOR CONSTRUCTION		
HORIZONTAL	1:250		
VERTICAL	1:50		
DATE	2012 03 27		
PLOT DATE:	2012 03 28		
DATE	MARCH 28, 2012		

ENGINEER'S SEAL
ORIGINAL SIGNED BY S.R.J. COURNOYER 12-03-27
CONSULTANT DRAWING NUMBER

THE CITY OF WINNIPEG
WATER AND WASTE DEPARTMENT
ENGINEERING DIVISION
2012 WATERMAIN RENEWALS
BARDAL BAY (S LEG)
92 E OF DE GRAFF PLACE TO BARDAL BAY (E LEG)
SHEET 3 OF 14
CITY DRAWING NUMBER
D-12878