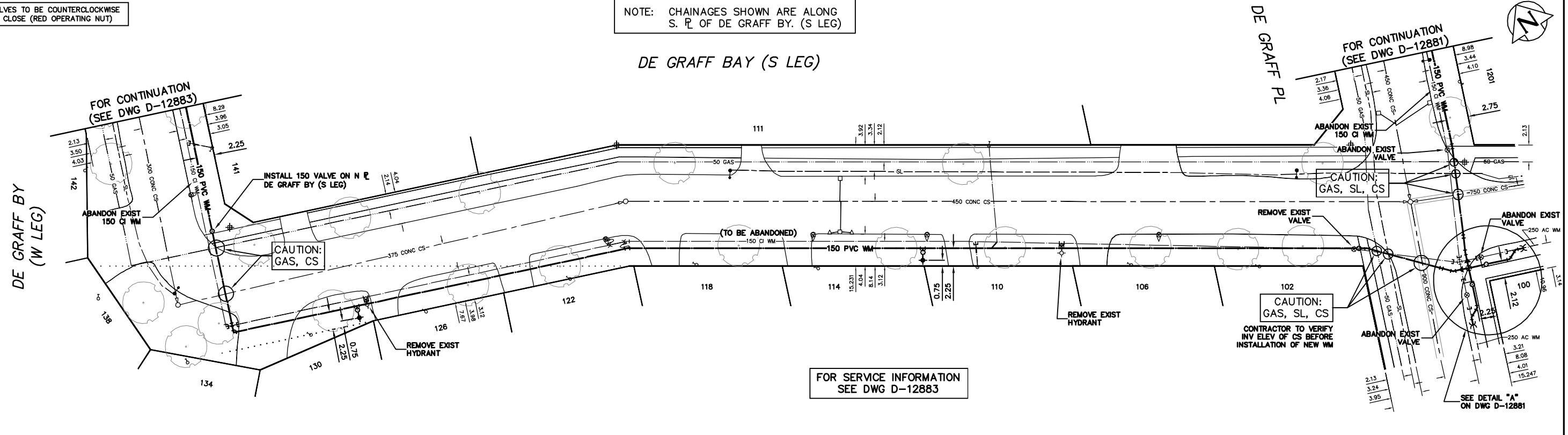


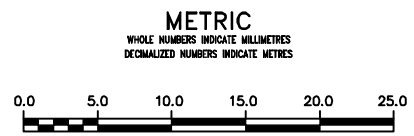
VALVES TO BE COUNTERCLOCKWISE TO CLOSE (RED OPERATING NUT)

NOTE: CHAINAGES SHOWN ARE ALONG S. LEG OF DE GRAFF BY. (S LEG)

DE GRAFF BAY (S LEG)



FOR SERVICE INFORMATION SEE DWG D-12883



**WARNING**  
IF POWER EQUIPMENT OR EXPLOSIVES ARE TO BE USED FOR EXCAVATION ON THIS PROJECT THE CONTRACTOR MUST:  
1) NOTIFY THE GAS COMPANY OF THE PROPOSED LOCATION OF EXCAVATION.  
2) TAKE PRECAUTION TO AVOID DAMAGE TO GAS COMPANY INSTALLATIONS.  
SEE PROVINCIAL REGULATION 21072 FOR DETAILS

**LOCATION APPROVED UNDERGROUND STRUCTURES**  
SUPV. U/G STRUCTURES COMMITTEE DATE  
NOTE:  
LOCATION OF UNDERGROUND STRUCTURES AS SHOWN ARE BASED ON THE BEST INFORMATION AVAILABLE BUT NO GUARANTEE IS GIVEN THAT ALL EXISTING UTILITIES ARE SHOWN OR THAT THE GIVEN LOCATIONS ARE EXACT. CONFIRMATION OF EXISTENCE AND EXACT LOCATION OF ALL SERVICES MUST BE OBTAINED FROM THE INDIVIDUAL UTILITIES BEFORE PROCEEDING WITH CONSTRUCTION.

B.M. ELEV.	
CONSTRUCTION COMPLETION DATE: YYYY MM DD	
DESIGNED BY	NC
CHECKED BY	SC
DRAWN BY	CJH
APPROVED BY	KZ
SCALE:	
HORIZONTAL	1:250
VERTICAL	1:50
RELEASED FOR CONSTRUCTION	
K.R. ZUREK	
DATE	MARCH 28, 2012
NO.	REVISIONS
DATE	BY
DATE	2012 03 27
PLOT DATE:	2012 03 28

ENGINEER'S SEAL  
ORIGINAL SIGNED BY S.R.J. COURNOYER 12-03-27  
CONSULTANT DRAWING NUMBER

**THE CITY OF WINNIPEG**  
Winnipeg  
WATER AND WASTE DEPARTMENT  
ENGINEERING DIVISION  
2012 WATERMAIN RENEWALS  
DE GRAFF BAY (S LEG)  
DE GRAFF BAY (W LEG) TO DE GRAFF PLACE  
SHEET 7 OF 14  
CITY DRAWING NUMBER  
D-12882