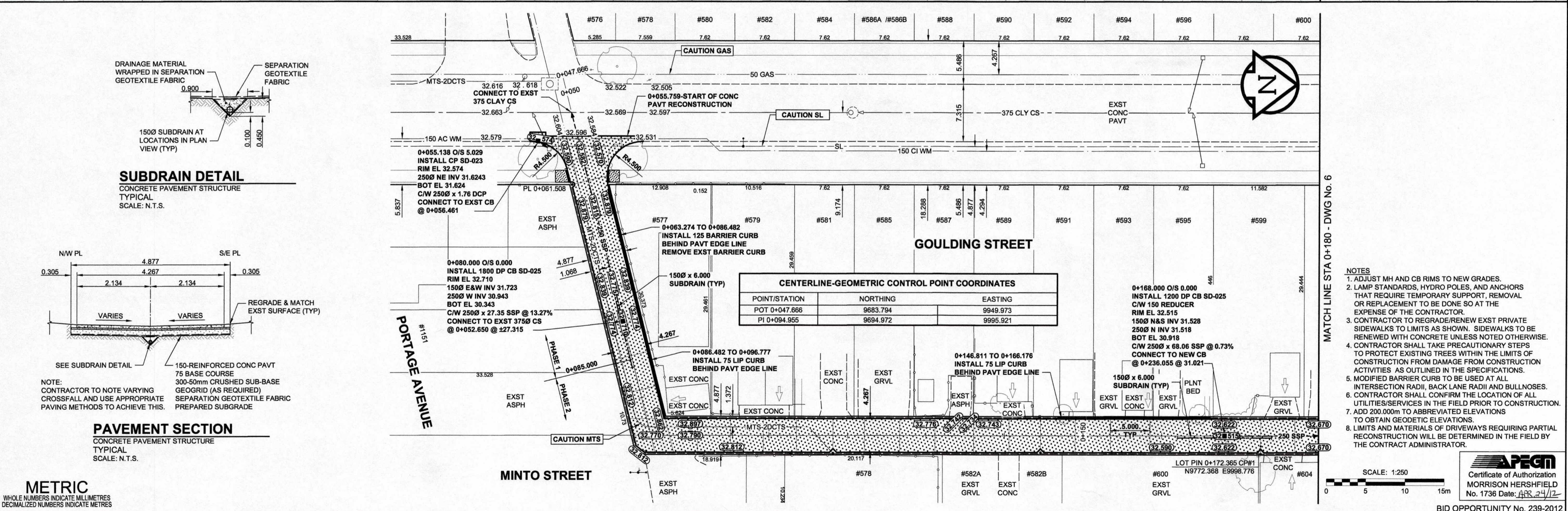
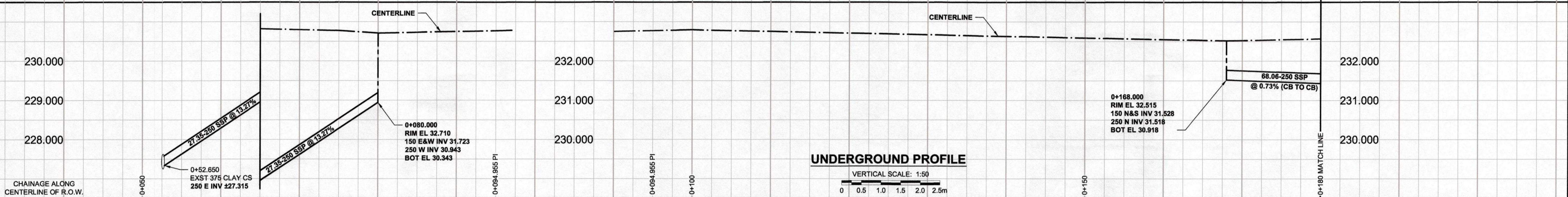
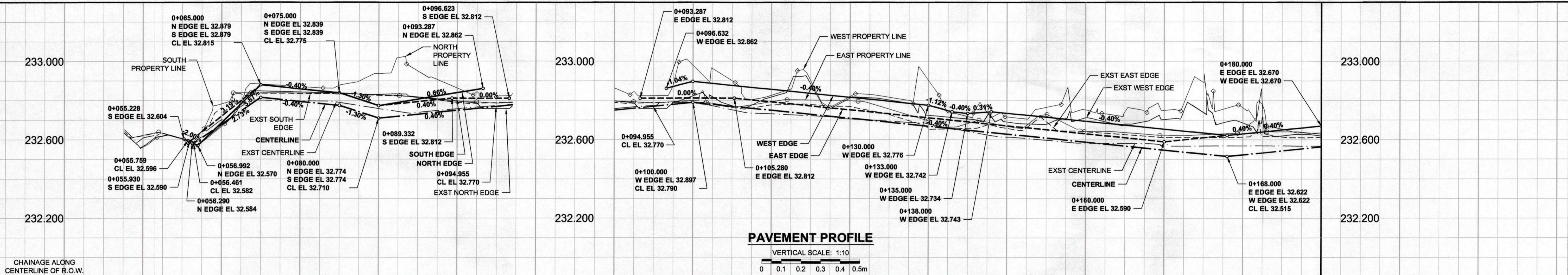


A1 SIZE 594mm x 841mm

PLOT: 4/24/2012 3:11:28 PM

FILE NAME: W11401400-T-005-RO.dwg Saved By: diane



**METRIC**  
WHOLE NUMBERS INDICATE MILLIMETRES  
DECIMAL NUMBERS INDICATE METRES

EXISTING	LEGEND - PLAN	NEW	EXISTING	LEGEND - PLAN	NEW	EXISTING	LEGEND - PLAN	NEW
○	GAS	○	MANHOLE	●	CONCRETE PAVEMENT	■	LOCATION APPROVED	■
○	MTS	○	CATCH BASIN / CATCH PIT	■	CONC SIDEWALK / MEDIAN	■	UNDERGROUND STRUCTURES	■
○	HYDRO	○	CURB INLET WITH BOX	■	ASPHALT PAVEMENT	■	SUPR. U/G STRUCTURES	■
○	CATV / FIBRE OPTIC	○	TREE	■	PAVING STONE	■	DATE	■
○	TRAFFIC SIGNALS / PIT	○	TEST HOLE	■	GRAVEL	■	COMMITTEE	■
○	LAND DRAINAGE SEWER	○	PROPERTY LINE	■	RAMP CURB	■	NOTE:	■
○	SANITARY/COMBINED SEWER	○	SURVEY BAR	■	PLANING / REMOVAL	■	LOCATION OF UNDERGROUND STRUCTURES	■
○	SSP/DCP	○	FENCE	■		■	AS SHOWN ARE BASED ON THE BEST	■
○	WATERMAIN	○	BOC / EDGE OF PAVEMENT	■		■	INFORMATION AVAILABLE. BUT NO	■
○	SUBDRAIN	○	ELEVATION	■		■	GUARANTEE IS GIVEN THAT ALL EXISTING	■
○	DITCH	○	TRAFFIC SIGN	■		■	UTILITIES ARE SHOWN OR THAT THE GIVEN	■
○		○		■		■	LOCATIONS ARE EXACT. CONFIRMATION OF	■
○		○		■		■	EXISTENCE AND EXACT LOCATION OF ALL	■
○		○		■		■	SERVICES MUST BE OBTAINED FROM THE	■
○		○		■		■	INDIVIDUAL UTILITIES BEFORE PROCEEDING	■
○		○		■		■	WITH CONSTRUCTION.	■

BM GBM No. 37-038  
ELEV 232.957m

**MORRISON HERSHFIELD**

DESIGNED BY JGK  
DRAWN BY DID/DML  
HOR. SCALE 1:250  
VERT. SCALE AS SHOWN  
DATE 12/04/19

CHECKED BY RPB  
APPROVED BY BWB  
RELEASED FOR CONSTRUCTION  
DATE 12/04/19

PROFESSIONAL'S SEAL  
PROVINCE OF MANITOBA  
J.G. KENNEDY  
Member  
22326  
APP. 24/12  
REGISTERED PROFESSIONAL ENGINEER

CONSULTANT DRAWING No.  
W11401400-T-005-RO.dwg

**THE CITY OF WINNIPEG**  
PUBLIC WORKS DEPARTMENT  
ENGINEERING DIVISION

**2012 REGIONAL & LOCAL STREET ALLEY PACKAGE**  
GOULDING STREET-MINTO STREET ALLEY  
BETWEEN PORTAGE AVENUE & WOLEVER AVENUE  
HORIZONTAL AND VERTICAL ALIGNMENT  
STA 0+055 TO STA 0+180

CITY DRAWING NUMBER N/A  
SHEET 5 OF 17  
DRAWING No. 5  
REV 1

BID OPPORTUNITY No. 239-2012