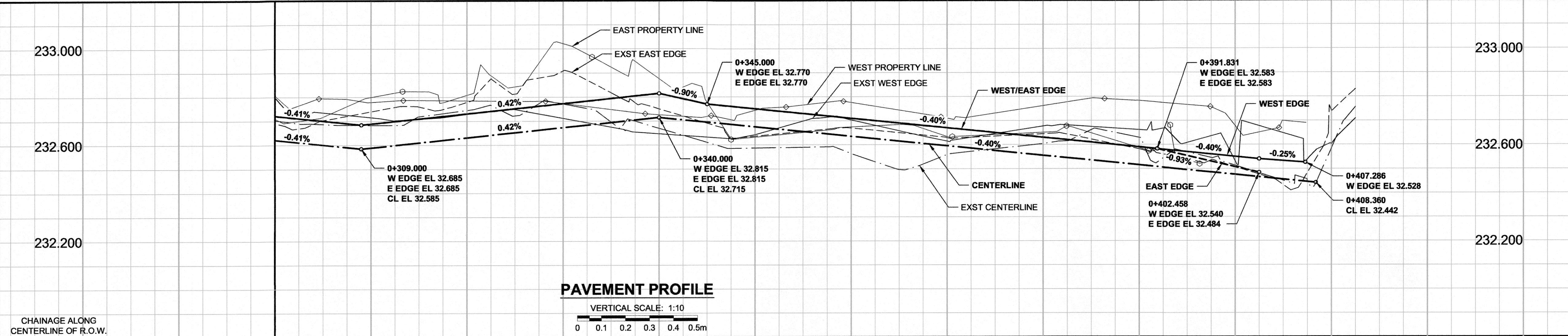
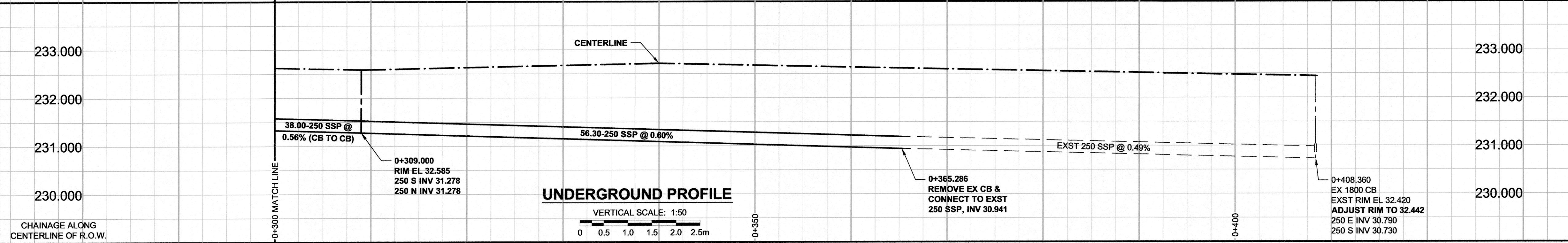


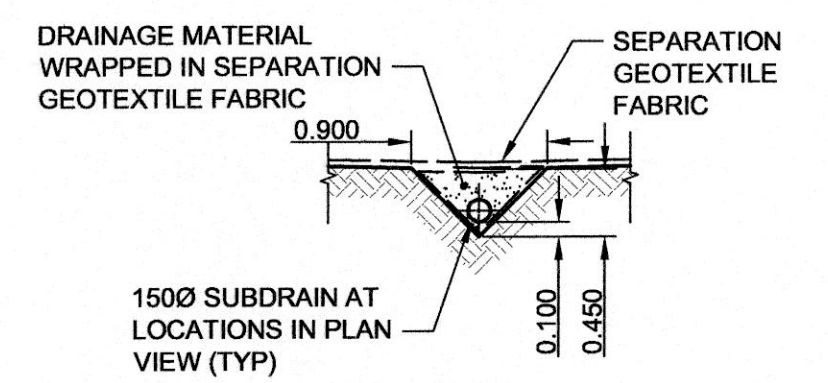
A1 SIZE 594mm x 841mm
PLOT: 4/18/2012 1:47:57 PM
FILE NAME: W11401400-T-003_R0.dwg Saved By: addaszpud



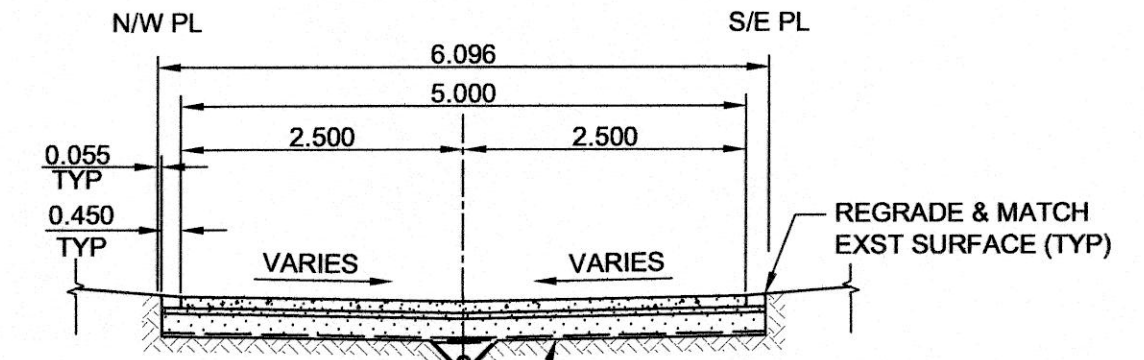
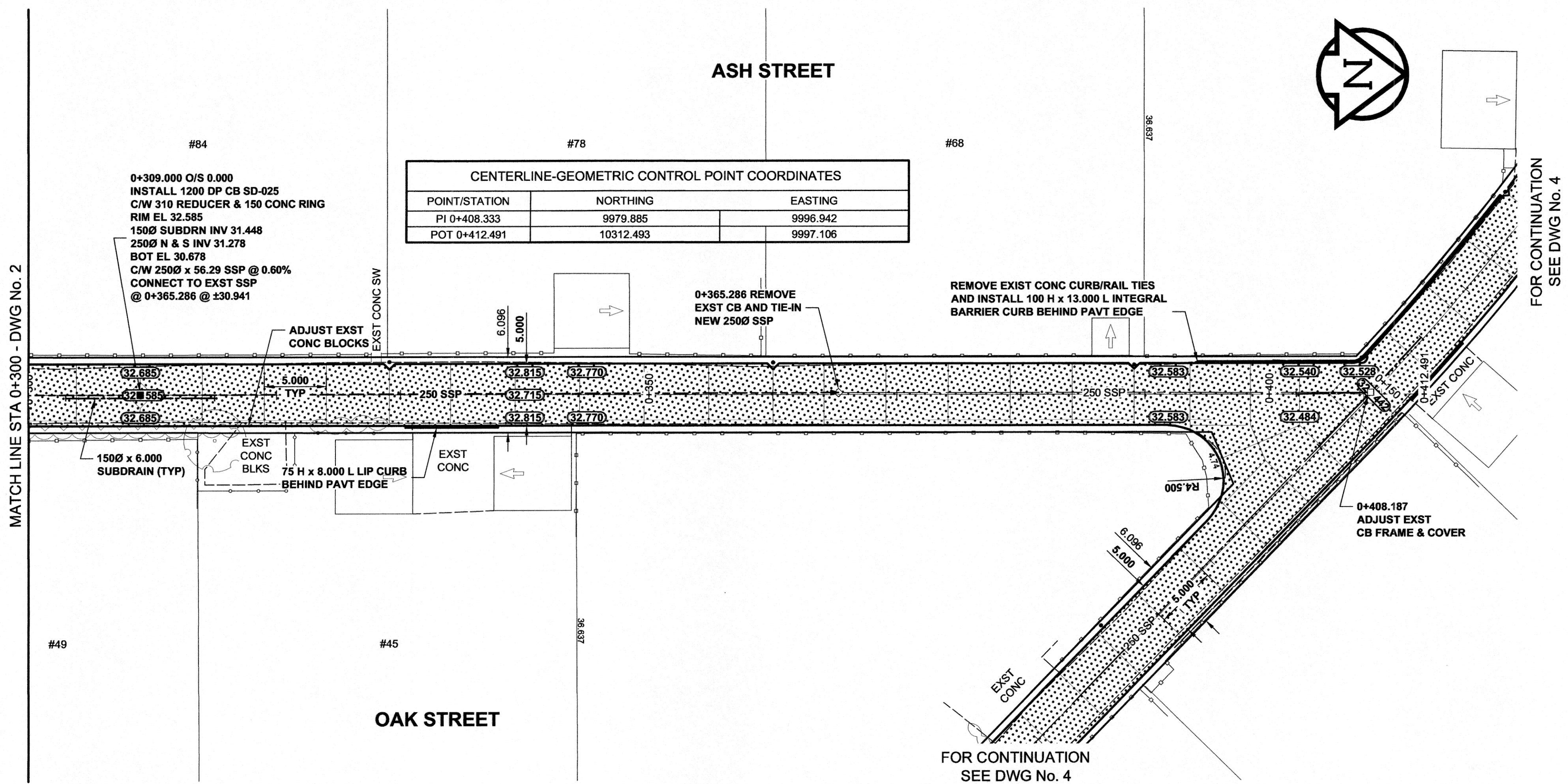
PAVEMENT PROFILE
VERTICAL SCALE: 1:10
0 0.1 0.2 0.3 0.4 0.5m



UNDERGROUND PROFILE
VERTICAL SCALE: 1:50
0 0.5 1.0 1.5 2.0 2.5m

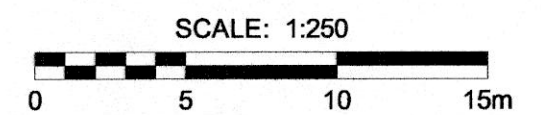


SUBDRAIN DETAIL
CONCRETE PAVEMENT STRUCTURE
TYPICAL
SCALE: N.T.S.



PAVEMENT SECTION
CONCRETE PAVEMENT STRUCTURE
TYPICAL
SCALE: N.T.S.

- NOTES**
- ADJUST MH AND CB RIMS TO NEW GRADES.
 - LAMP STANDARDS, HYDRO POLES, AND ANCHORS THAT REQUIRE TEMPORARY SUPPORT, REMOVAL OR REPLACEMENT TO BE DONE SO AT THE EXPENSE OF THE CONTRACTOR.
 - CONTRACTOR TO REGRADE/RENEW EXIST PRIVATE SIDEWALKS TO LIMITS AS SHOWN. SIDEWALKS TO BE RENEWED WITH CONCRETE UNLESS NOTED OTHERWISE.
 - CONTRACTOR SHALL TAKE PRECAUTIONARY STEPS TO PROTECT EXISTING TREES WITHIN THE LIMITS OF CONSTRUCTION FROM DAMAGE FROM CONSTRUCTION ACTIVITIES AS OUTLINED IN THE SPECIFICATIONS.
 - MODIFIED BARRIER CURBS TO BE USED AT ALL INTERSECTION RADII, BACK LANE RADII AND BULLNOSES.
 - CONTRACTOR SHALL CONFIRM THE LOCATION OF ALL UTILITIES/SERVICES IN THE FIELD PRIOR TO CONSTRUCTION.
 - ADD 200.00mm TO ABBREVIATED ELEVATIONS TO OBTAIN GEODETIC ELEVATIONS.
 - LIMITS AND MATERIALS OF DRIVEWAYS REQUIRING PARTIAL RECONSTRUCTION WILL BE DETERMINED IN THE FIELD BY THE CONTRACT ADMINISTRATOR.



APECM
Certificate of Authorization
MORRISON HERSHFELD
No. 1736 Date: APR 19/12

METRIC
WHOLE NUMBERS INDICATE MILLIMETRES
DECIMAL NUMBERS INDICATE METRES

EXISTING	LEGEND - PLAN	NEW	EXISTING	LEGEND - PLAN	NEW	EXISTING	LEGEND - PLAN	NEW	
	GAS		MANHOLE		CONCRETE PAVEMENT		LOCATION APPROVED		BM
	MTS		CATCH BASIN / CATCH PIT		CONC SIDEWALK / MEDIAN		UNDERGROUND STRUCTURES		ELEV
	HYDRO		TREE		ASPHALT PAVEMENT		DATE		233.239m
	CATV / FIBRE OPTIC		TEST HOLE		PAVING STONE		COMMITTEE		12/04/19
	LAND DRAINAGE SEWER		PROPERTY LINE		GRAVEL		NOTE:		JGK
	SANITARY/COMBINED SEWER		SURVEY BAR		RAMP CURBS		LOCATION OF UNDERGROUND STRUCTURES AS SHOWN ARE BASED ON THE BEST INFORMATION AVAILABLE. BUT NO GUARANTEE IS GIVEN THAT ALL EXISTING UTILITIES ARE SHOWN OR THAT THE GIVEN LOCATIONS ARE EXACT. CONFIRMATION OF EXISTENCE AND EXACT LOCATION OF ALL SERVICES MUST BE OBTAINED FROM THE INDIVIDUAL UTILITIES BEFORE PROCEEDING WITH CONSTRUCTION.		22326
	SSP/DCP		FENCE		PLANING / REMOVAL		DATE		12/04/19
	WATERMAIN		BOC / EDGE OF PAVEMENT		ELEVATION		DATE		12/04/19
	SUBDRAIN		ELEVATION		TRAFFIC SIGN		DATE		12/04/19
	DITCH		TRAFFIC SIGN				DATE		12/04/19

ISSUED FOR CONSTRUCTION	DATE	BY
0	12/04/19	JGK
No. REVISIONS	YYMMDD	BY

DESIGNED BY	CHECKED BY
JGK	RPB
DRAWN BY	APPROVED BY
DID/DML	BWB
HOR. SCALE	RELEASED FOR CONSTRUCTION
1:250	
VERT. SCALE	DATE
AS SHOWN	12/04/19

PROFESSIONAL'S SEAL
PROVINCE OF MANITOBA
J.G. KENNEDY
Member
22326
APR 19/12
REGISTERED PROFESSIONAL ENGINEER

THE CITY OF WINNIPEG
PUBLIC WORKS DEPARTMENT
ENGINEERING DIVISION

2012 REGIONAL & LOCAL STREET ALLEY PACKAGE
ASH STREET-OAK STREET ALLEY
BETWEEN ACADEMY ROAD & WELLINGTON CRESC
HORIZONTAL AND VERTICAL ALIGNMENT
STA 0+300 TO STA 0+412

CITY DRAWING NUMBER N/A
SHEET 3 OF 17
DRAWING No. 3
REV 0

BID OPPORTUNITY No. 239-2012