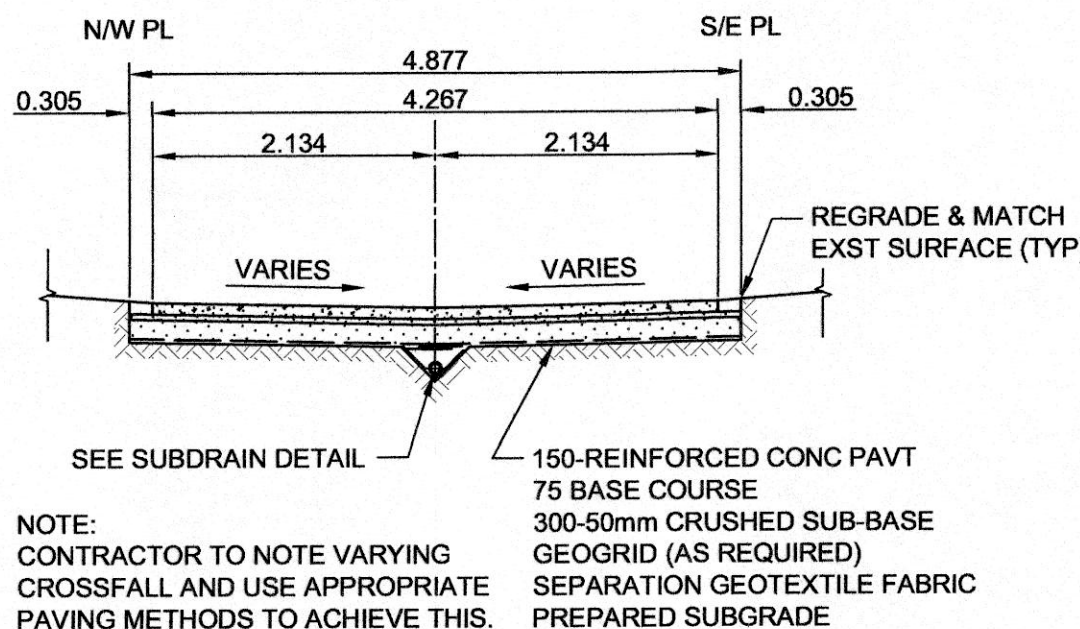
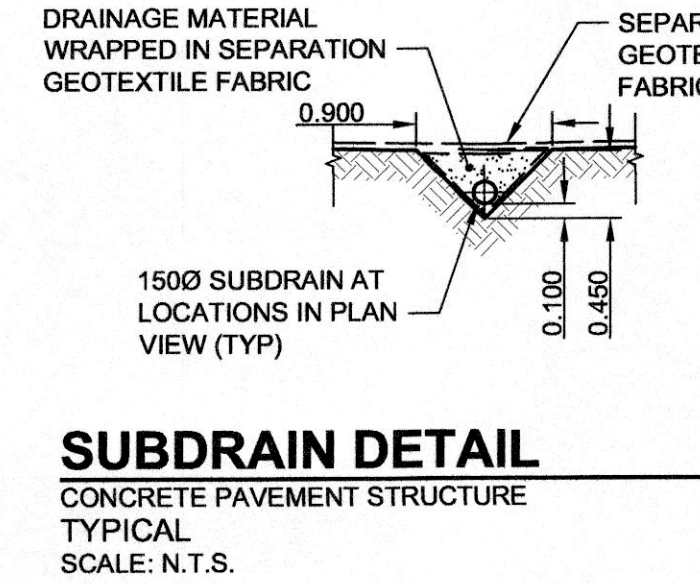
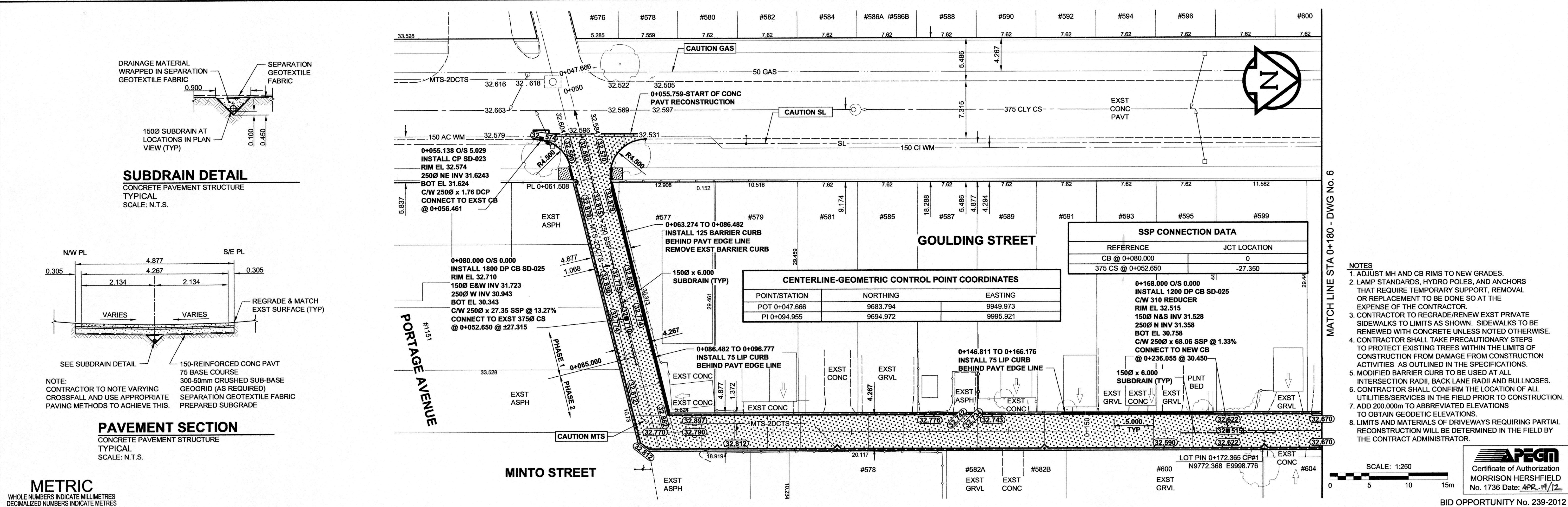
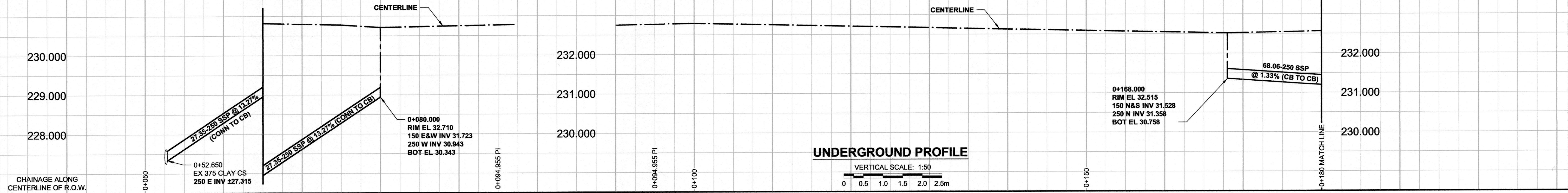
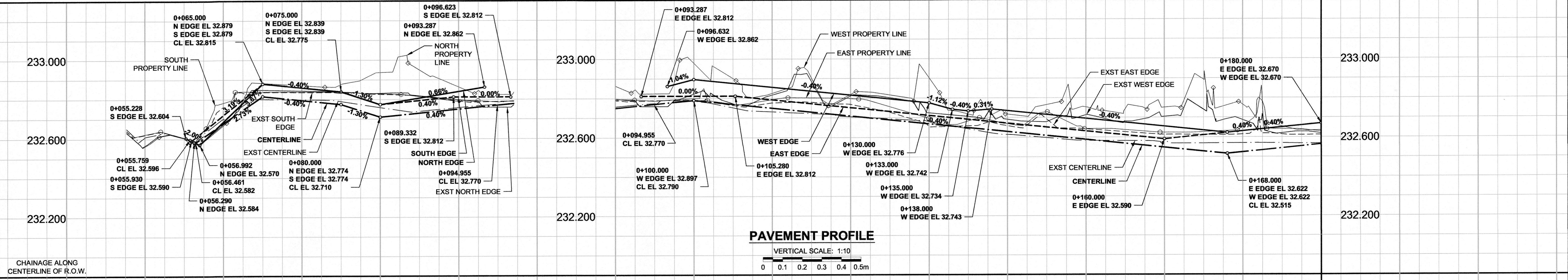


A1 SIZE 594mm x 841mm
 PLOT: 4/18/2012 1:48:24 PM
 FILE NAME: W11401400-T-005 RD.dwg Saved By: ddozspood



SSP CONNECTION DATA

REFERENCE	JCT LOCATION
CB @ 0+080.000	0
375 CS @ 0+052.650	-27.350

CENTERLINE-GEOMETRIC CONTROL POINT COORDINATES

POINT/STATION	NORTHING	EASTING
POT 0+047.666	9683.794	9949.973
PI 0+094.955	9694.972	9995.921

- NOTES**
- ADJUST MH AND CB RIMS TO NEW GRADES.
 - LAMP STANDARDS, HYDRO POLES, AND ANCHORS THAT REQUIRE TEMPORARY SUPPORT, REMOVAL OR REPLACEMENT TO BE DONE SO AT THE EXPENSE OF THE CONTRACTOR.
 - CONTRACTOR TO REGRADE/RENEW EXST PRIVATE SIDEWALKS TO LIMITS AS SHOWN. SIDEWALKS TO BE RENEWED WITH CONCRETE UNLESS NOTED OTHERWISE.
 - CONTRACTOR SHALL TAKE PRECAUTIONARY STEPS TO PROTECT EXISTING TREES WITHIN THE LIMITS OF CONSTRUCTION FROM DAMAGE FROM CONSTRUCTION ACTIVITIES AS OUTLINED IN THE SPECIFICATIONS.
 - MODIFIED BARRIER CURBS TO BE USED AT ALL INTERSECTION RADII, BACK LANE RADII AND BULLNOSES.
 - CONTRACTOR SHALL CONFIRM THE LOCATION OF ALL UTILITIES/SERVICES IN THE FIELD PRIOR TO CONSTRUCTION.
 - ADD 200.000m TO ABBREVIATED ELEVATIONS TO OBTAIN GEODETIC ELEVATIONS.
 - LIMITS AND MATERIALS OF DRIVEWAYS REQUIRING PARTIAL RECONSTRUCTION WILL BE DETERMINED IN THE FIELD BY THE CONTRACT ADMINISTRATOR.

METRIC
 WHOLE NUMBERS INDICATE MILLIMETRES
 DECIMALIZED NUMBERS INDICATE METRES

EXISTING	LEGEND - PLAN	NEW	EXISTING	LEGEND - PLAN	NEW	EXISTING	LEGEND - PLAN	NEW	
	GAS		MANHOLE		CONCRETE PAVEMENT		LOCATION APPROVED		BM
	MTS		CATCH BASIN / CATCH PIT		CONC SIDEWALK / MEDIAN		SUPR. UG STRUCTURES		DATE COMMITTEE
	HYDRO		TREE		ASPHALT PAVEMENT		NOTE:		LOCATION OF UNDERGROUND STRUCTURES
	CATV / FIBRE OPTIC		TEST HOLE		PAVING STONE		AS SHOWN ARE BASED ON THE BEST INFORMATION AVAILABLE. BUT NO GUARANTEE IS GIVEN THAT ALL EXISTING UTILITIES ARE SHOWN OR THAT THE GIVEN LOCATIONS ARE EXACT. CONFIRMATION OF EXISTENCE AND EXACT LOCATION OF ALL SERVICES MUST BE OBTAINED FROM THE INDIVIDUAL UTILITIES BEFORE PROCEEDING WITH CONSTRUCTION.		NO. REVISIONS
	LAND DRAINAGE SEWER		PROPERTY LINE		GRAVEL		DATE		YYMMDD
	SANITARY/COMBINED SEWER		SURVEY BAR		RAMP CURB		DATE		BY
	SSP/DCP		FENCE		PLANING / REMOVAL		DATE		BY
	WATERMAIN		BOC / EDGE OF PAVEMENT		EXISTING		DATE		BY
	SUBDRAIN		ELEVATION		NEW		DATE		BY
	DITCH		TRAFFIC SIGN		EXISTING		DATE		BY

LOCATION APPROVED
 UNDERGROUND STRUCTURES

BM GBM No. 37-038
 ELEV 232.957m

MORRISON HERSHFIELD

DESIGNED BY: JGK
 CHECKED BY: RPB
 DRAWN BY: DID/DML
 APPROVED BY: BWB
 HOR. SCALE: 1:250
 VERT. SCALE: AS SHOWN
 DATE: 12/04/19

ISSUED FOR CONSTRUCTION 12/04/19 JGK
 NO. REVISIONS YYMMDD BY

PROFESSIONAL'S SEAL

MORRISON HERSHFIELD

DESIGNED BY: JGK
 CHECKED BY: RPB
 DRAWN BY: DID/DML
 APPROVED BY: BWB
 HOR. SCALE: 1:250
 VERT. SCALE: AS SHOWN
 DATE: 12/04/19

RELEASED FOR CONSTRUCTION
 DATE: APRIL 19/12

CONSULTANT DRAWING No. W11401400-T-005_RD.dwg

THE CITY OF WINNIPEG
 PUBLIC WORKS DEPARTMENT
 ENGINEERING DIVISION

2012 REGIONAL & LOCAL STREET ALLEY PACKAGE
 GOULDING STREET-MINTO STREET ALLEY
 BETWEEN PORTAGE AVENUE & WOLEVER AVENUE
 HORIZONTAL AND VERTICAL ALIGNMENT
 STA 0+055 TO STA 0+180

CITY DRAWING NUMBER: N/A
 SHEET: 5 OF 17
 DRAWING No.: 5
 REV: 0

BID OPPORTUNITY No. 239-2012

APECM
 Certificate of Authorization
 MORRISON HERSHFIELD
 No. 1736 Date: APR 19/12