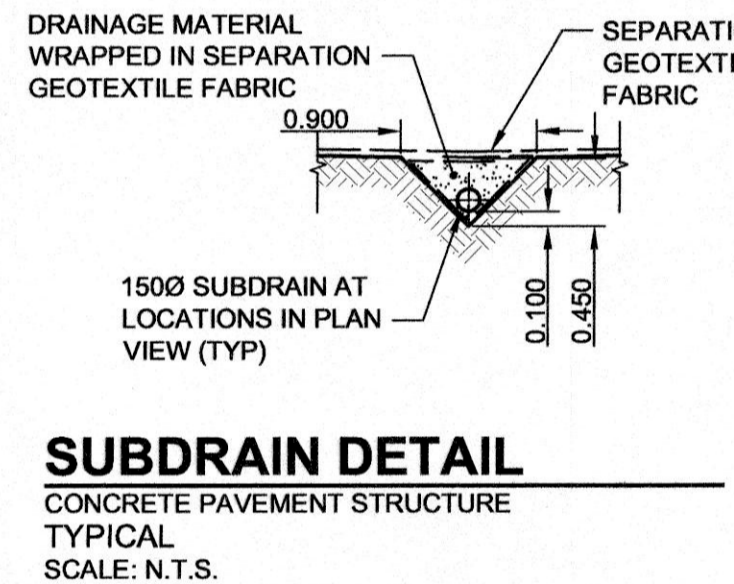
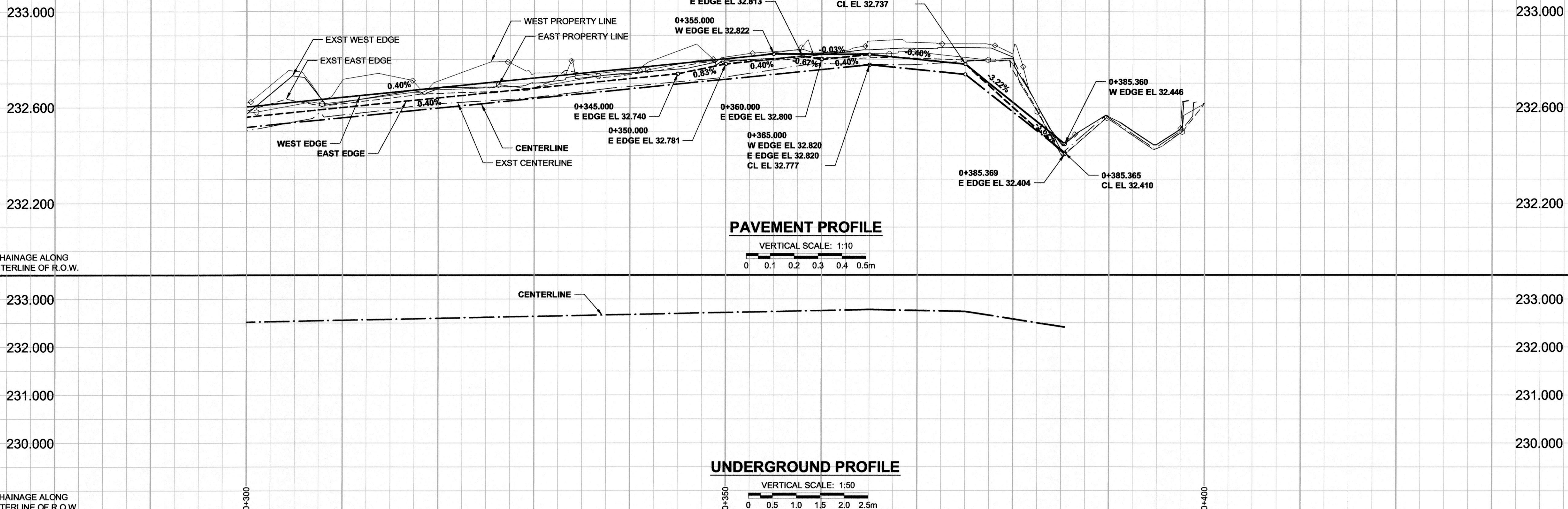
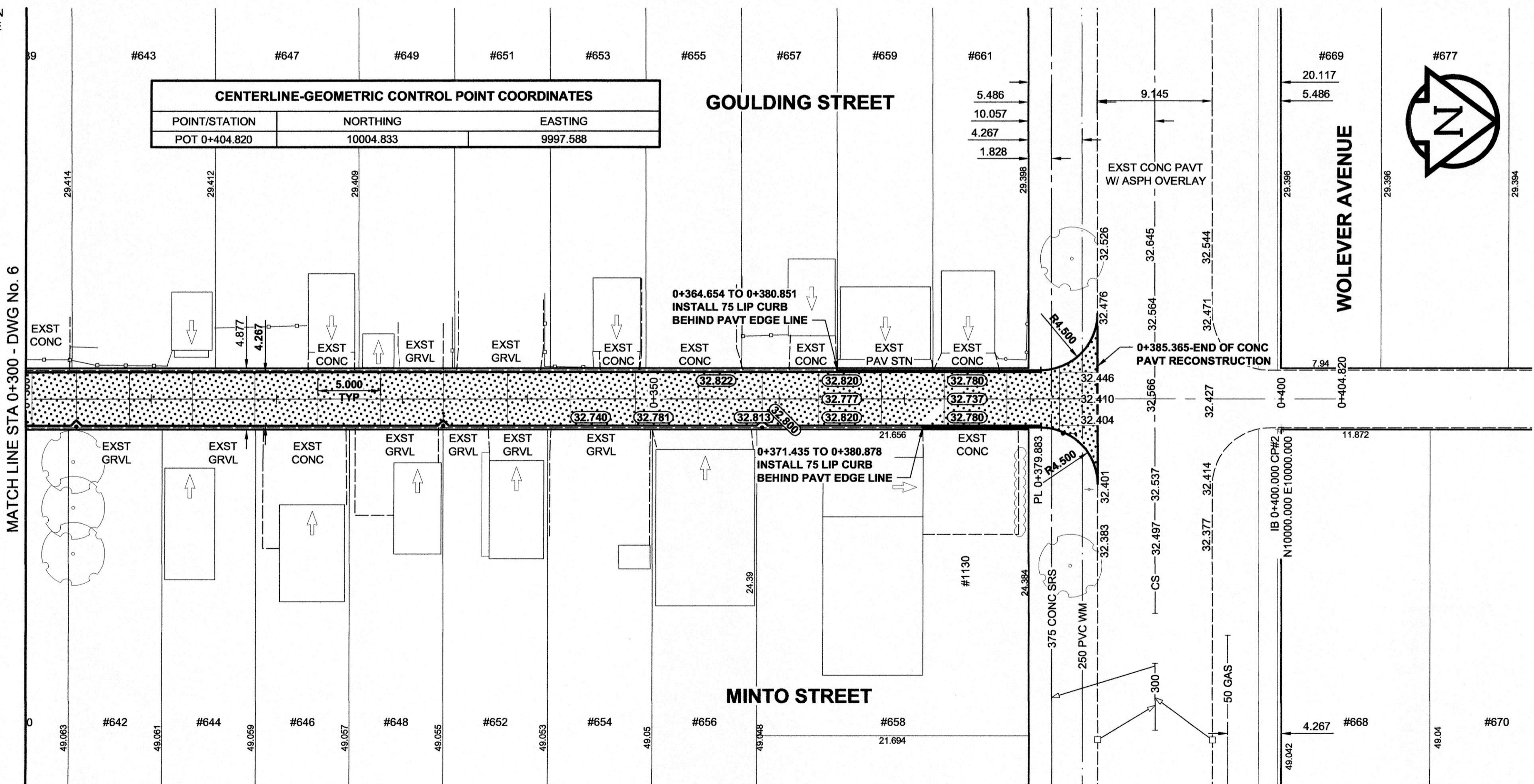
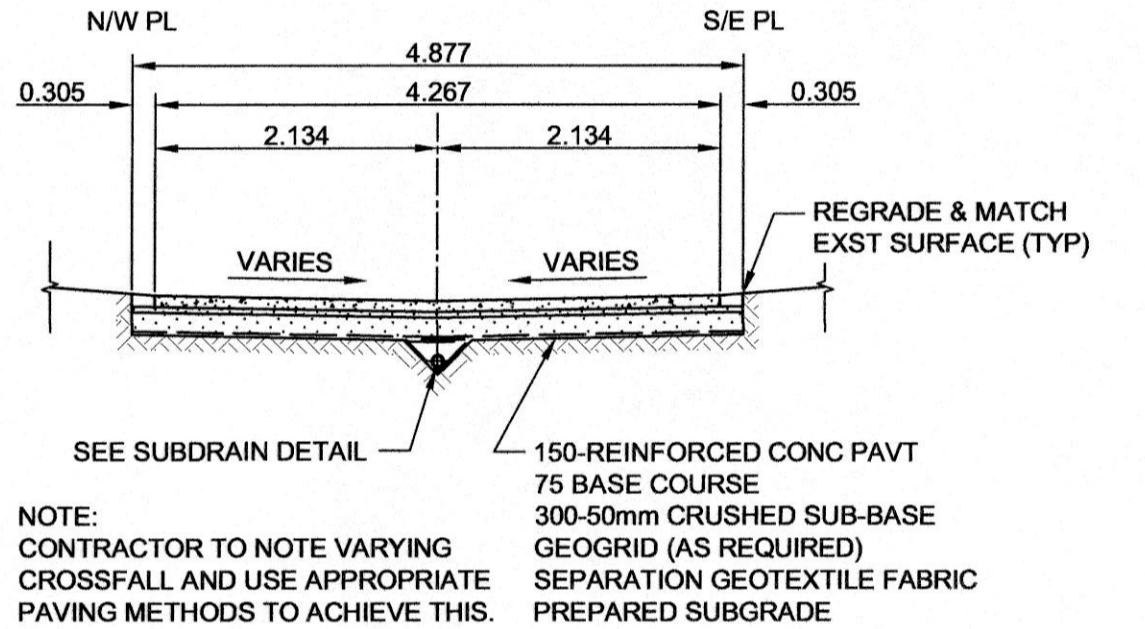


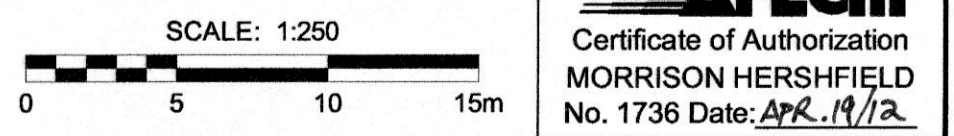
A1 SIZE 594mm x 841mm
 PLOT: 4/18/2012 1:48:43 PM
 FILE NAME: W1140-T-007_R0.dwg Saved By: ddoszp02



CENTERLINE-GEOMETRIC CONTROL POINT COORDINATES		
POINT/STATION	NORTHING	EASTING
POT 0+404.820	10004.833	9997.588



- NOTES**
- ADJUST MH AND CB RIMS TO NEW GRADES.
 - LAMP STANDARDS, HYDRO POLES, AND ANCHORS THAT REQUIRE TEMPORARY SUPPORT, REMOVAL OR REPLACEMENT TO BE DONE SO AT THE EXPENSE OF THE CONTRACTOR.
 - CONTRACTOR TO REGRADE/RENEW EXST PRIVATE SIDEWALKS TO LIMITS AS SHOWN. SIDEWALKS TO BE RENEWED WITH CONCRETE UNLESS NOTED OTHERWISE.
 - CONTRACTOR SHALL TAKE PRECAUTIONARY STEPS TO PROTECT EXISTING TREES WITHIN THE LIMITS OF CONSTRUCTION FROM DAMAGE FROM CONSTRUCTION ACTIVITIES AS OUTLINED IN THE SPECIFICATIONS.
 - MODIFIED BARRIER CURB TO BE USED AT ALL INTERSECTION RADI, BACK LANE RADI AND BULLNOSES.
 - CONTRACTOR SHALL CONFIRM THE LOCATION OF ALL UTILITIES/SERVICES IN THE FIELD PRIOR TO CONSTRUCTION.
 - ADD 200.000m TO ABBREVIATED ELEVATIONS TO OBTAIN GEODETIC ELEVATIONS.
 - LIMITS AND MATERIALS OF DRIVEWAYS REQUIRING PARTIAL RECONSTRUCTION WILL BE DETERMINED IN THE FIELD BY THE CONTRACT ADMINISTRATOR.



METRIC
WHOLE NUMBERS INDICATE MILLIMETRES
DECIMAL NUMBERS INDICATE METRES

EXISTING	LEGEND - PLAN	NEW	EXISTING	LEGEND - PLAN	NEW	EXISTING	LEGEND - PLAN	NEW
○	GAS	○	MANHOLE	●	CONCRETE PAVEMENT	■	LOCATION APPROVED	■
○	MTS	□	CATCH BASIN / CATCH PIT	■	CONC SIDEWALK / MEDIAN	■	UNDERGROUND STRUCTURES	■
○	HYDRO	□	CURB INLET WITH BOX	▲	ASPHALT PAVEMENT	■		■
○	CATV / FIBRE OPTIC	○	TREE	○	PAVING STONE	■		■
○	TRAFFIC SIGNALS / PIT	○	TEST HOLE	○	GRAVEL	■		■
○	LAND DRAINAGE SEWER	○	PROPERTY LINE	○	RAMP CURB	■		■
○	SANITARY/COMBINED SEWER	○	SURVEY BAR	○	PLANING / REMOVAL	■		■
○	SSP/DCP	○	FENCE	○		■		■
○	WATERMAIN	○	BOC / EDGE OF PAVEMENT	○		■		■
○	SUBDRAIN	○	ELEVATION	○		■		■
○	DITCH	○	TRAFFIC SIGN	○		■		■

BM	GBM No.	ELEV
	37-038	232.957m

LOCATION APPROVED
UNDERGROUND STRUCTURES

SUPR. U/G STRUCTURES DATE COMMITTEE

NOTE:
LOCATION OF UNDERGROUND STRUCTURES AS SHOWN ARE BASED ON THE BEST INFORMATION AVAILABLE. BUT NO GUARANTEE IS GIVEN THAT ALL EXISTING UTILITIES ARE SHOWN OR THAT THE GIVEN LOCATIONS ARE EXACT. CONFIRMATION OF EXISTENCE AND EXACT LOCATION OF ALL SERVICES MUST BE OBTAINED FROM THE INDIVIDUAL UTILITIES BEFORE PROCEEDING WITH CONSTRUCTION.

DESIGNED BY	CHECKED BY
JGK	RPB
DRAWN BY	APPROVED BY
DID/DML	BWB
HOR. SCALE	RELEASED FOR CONSTRUCTION
1:250	
VERT. SCALE	DATE
AS SHOWN	12/04/19

PROFESSIONAL'S SEAL

PROVINCE OF MANITOBA

J.G. KENNEDY

Member

22326

APR 17/12

REGISTERED PROFESSIONAL ENGINEER

CONSULTANT DRAWING No. W11401400-T-007_R0.dwg

THE CITY OF WINNIPEG

PUBLIC WORKS DEPARTMENT

ENGINEERING DIVISION

2012 REGIONAL & LOCAL STREET ALLEY PACKAGE

GOULDING STREET-MINTO STREET ALLEY BETWEEN PORTAGE AVENUE & WOLEVER AVENUE HORIZONTAL AND VERTICAL ALIGNMENT

STA 0+300 TO STA 0+385

CITY DRAWING NUMBER N/A

SHEET 7 OF 17

DRAWING No. 7

REV 0

BID OPPORTUNITY No. 239-2012