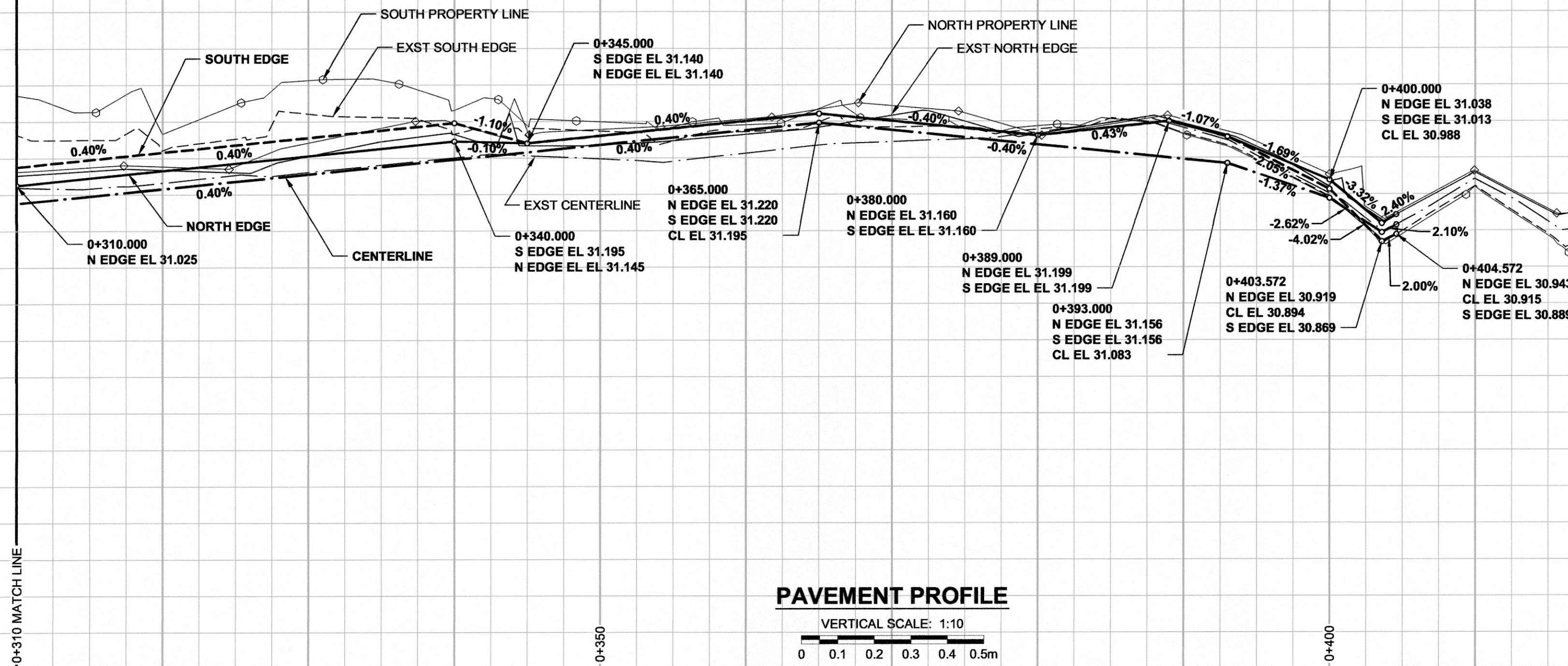


FILE NAME: W11401400-T-013_R0.dwg Saved By: ddozspod
 A1 SIZE 594mm x 841mm
 PLOT: 4/18/2012 1:49:39 PM

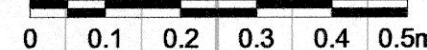
231.600
231.200
230.800
230.400

231.600
231.200
230.800
230.400

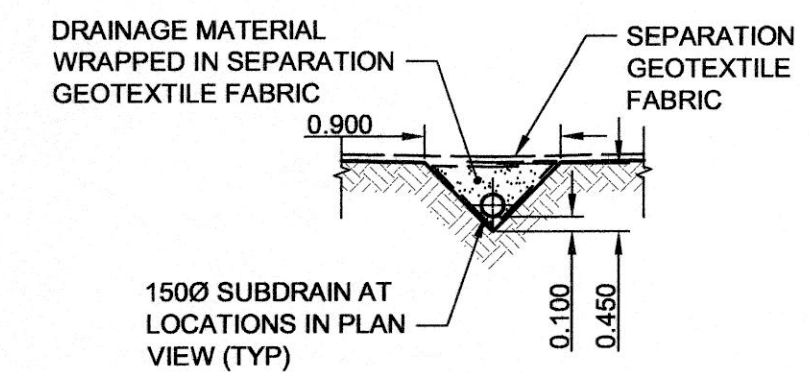


PAVEMENT PROFILE

VERTICAL SCALE: 1:10



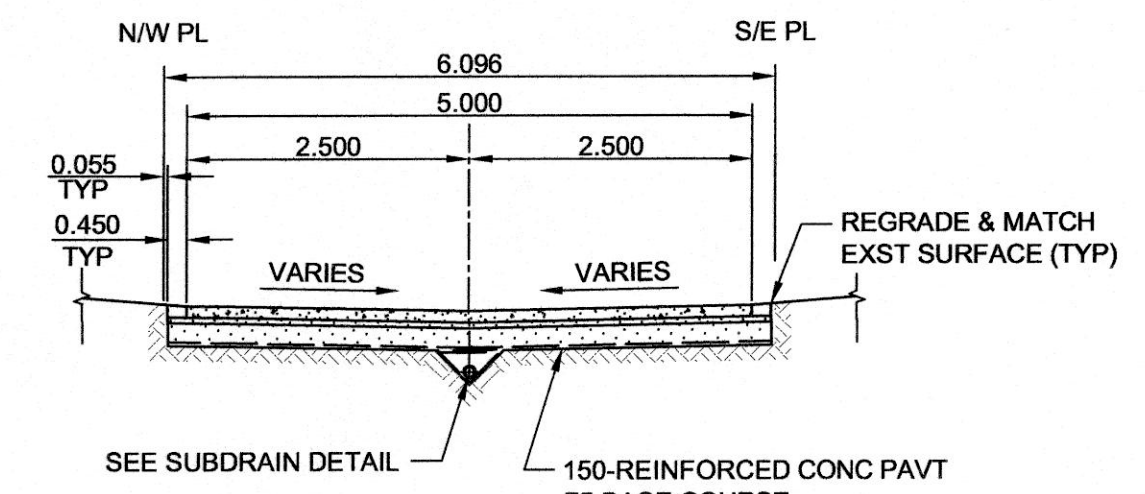
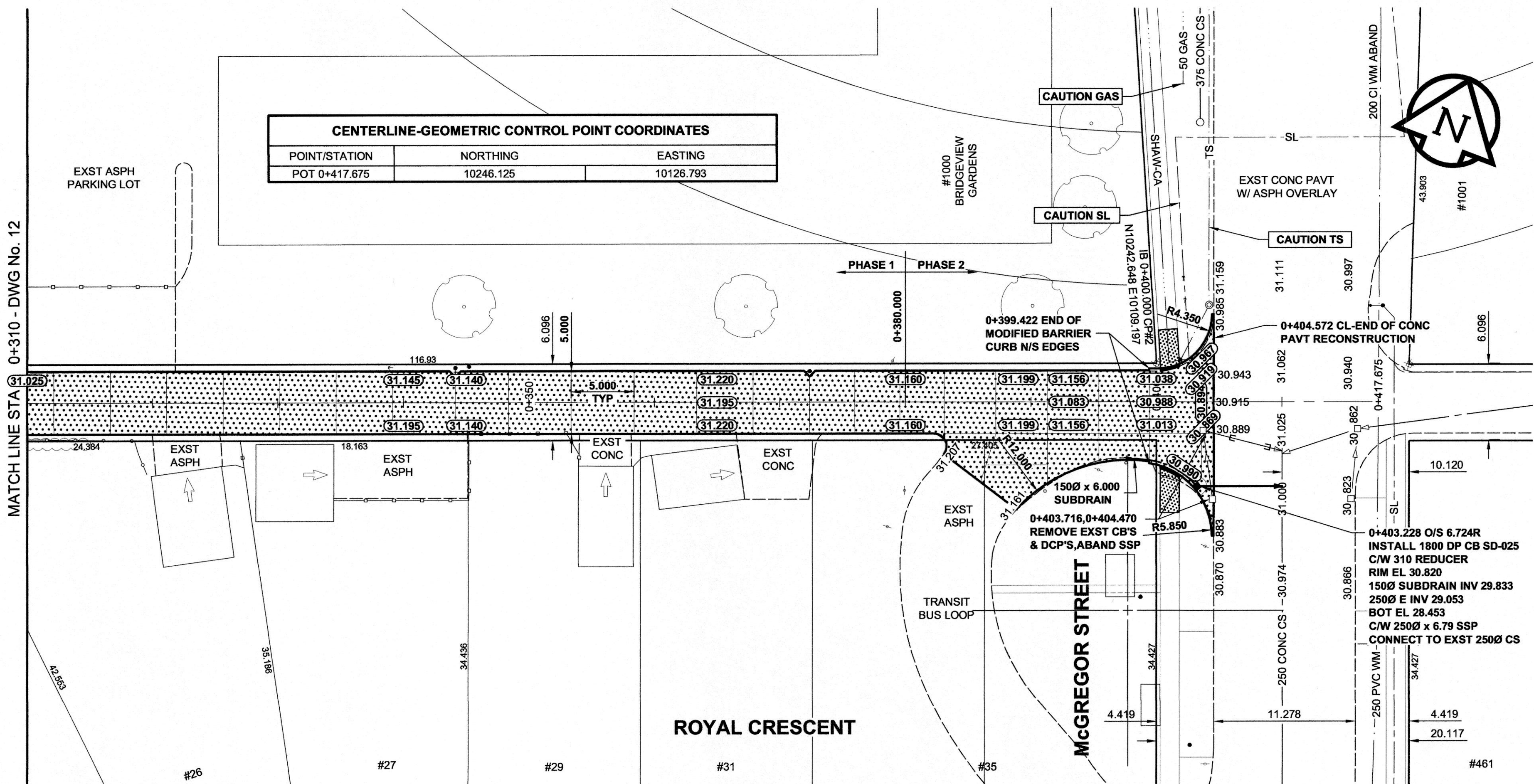
CHAINAGE ALONG CENTERLINE OF R.O.W.



SUBDRAIN DETAIL

CONCRETE PAVEMENT STRUCTURE TYPICAL SCALE: N.T.S.

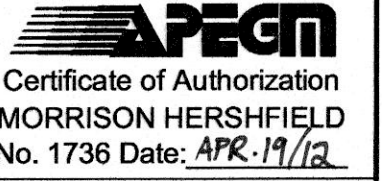
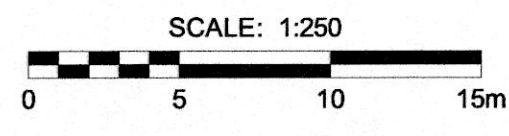
| CENTERLINE-GEOMETRIC CONTROL POINT COORDINATES | | |
|--|-----------|-----------|
| POINT/STATION | NORTHING | EASTING |
| POT 0+417.675 | 10246.125 | 10126.793 |



PAVEMENT SECTION

CONCRETE PAVEMENT STRUCTURE TYPICAL SCALE: N.T.S.

- NOTES**
- ADJUST MH AND CB RIMS TO NEW GRADES.
 - LAMP STANDARDS, HYDRO POLES, AND ANCHORS THAT REQUIRE TEMPORARY SUPPORT, REMOVAL OR REPLACEMENT TO BE DONE SO AT THE EXPENSE OF THE CONTRACTOR.
 - CONTRACTOR TO REGRADE/RENEW EXST PRIVATE SIDEWALKS TO LIMITS AS SHOWN. SIDEWALKS TO BE RENEWED WITH CONCRETE UNLESS NOTED OTHERWISE.
 - CONTRACTOR SHALL TAKE PRECAUTIONARY STEPS TO PROTECT EXISTING TREES WITHIN THE LIMITS OF CONSTRUCTION FROM DAMAGE FROM CONSTRUCTION ACTIVITIES AS OUTLINED IN THE SPECIFICATIONS.
 - MODIFIED BARRIER CURB TO BE USED AT ALL INTERSECTION RADII, BACK LANE RADII AND BULLNOSES.
 - CONTRACTOR SHALL CONFIRM THE LOCATION OF ALL UTILITIES/SERVICES IN THE FIELD PRIOR TO CONSTRUCTION.
 - ADD 200.000m TO ABBREVIATED ELEVATIONS TO OBTAIN GEODETIC ELEVATIONS.
 - LIMITS AND MATERIALS OF DRIVEWAYS REQUIRING PARTIAL RECONSTRUCTION WILL BE DETERMINED IN THE FIELD BY THE CONTRACT ADMINISTRATOR.



BID OPPORTUNITY No. 239-2012

METRIC
WHOLE NUMBERS INDICATE MILLIMETRES
DECIMALIZED NUMBERS INDICATE METRES

| EXISTING | LEGEND - PLAN | NEW | EXISTING | LEGEND - PLAN | NEW | EXISTING | LEGEND - PLAN | NEW | |
|----------|-------------------------|-----|-------------------------|---------------|------------------------|----------|--|-----|---------------------------|
| | GAS | | MANHOLE | | CONCRETE PAVEMENT | | LOCATION APPROVED | | BM |
| | MTS | | CATCH BASIN / CATCH PIT | | CONC SIDEWALK / MEDIAN | | SUPR. UG STRUCTURES | | ELEV 232.481m |
| | HYDRO | | CURB INLET WITH BOX | | ASPHALT PAVEMENT | | DATE | | COMMITTEE |
| | CATV / FIBRE OPTIC | | TEST HOLE | | PAVING STONE | | NOTE: | | DESIGNED BY |
| | LAND DRAINAGE SEWER | | PROPERTY LINE | | GRAVEL | | LOCATION OF UNDERGROUND STRUCTURES AS SHOWN ARE BASED ON THE BEST INFORMATION AVAILABLE. BUT NO GUARANTEE IS GIVEN THAT ALL EXISTING UTILITIES ARE SHOWN OR THAT THE GIVEN LOCATIONS ARE EXACT. CONFIRMATION OF EXISTENCE AND EXACT LOCATION OF ALL SERVICES MUST BE OBTAINED FROM THE INDIVIDUAL UTILITIES BEFORE PROCEEDING WITH CONSTRUCTION. | | DRAWN BY |
| | SANITARY/COMBINED SEWER | | SURVEY BAR | | RAMP CURB | | DATE | | CHECKED BY |
| | SSP/DCP | | FENCE | | PLANING / REMOVAL | | DATE | | APPROVED BY |
| | WATERMAIN | | BOC / EDGE OF PAVEMENT | | LEGEND | | DATE | | RELEASED FOR CONSTRUCTION |
| | SUBDRAIN | | ELEVATION | | LEGEND | | DATE | | CONSULTANT DRAWING No. |
| | DITCH | | TRAFFIC SIGN | | LEGEND | | DATE | | CITY DRAWING NUMBER |
| | EXISTING | | LEGEND - PLAN | | LEGEND - PLAN | | DATE | | SHEET |
| | NEW | | LEGEND - PLAN | | LEGEND - PLAN | | DATE | | REV |

| DESIGNED BY | CHECKED BY |
|---------------|---------------------------|
| JGK | RPB |
| DRAWN BY | APPROVED BY |
| DID/DML | BWB |
| HOR. SCALE | RELEASED FOR CONSTRUCTION |
| 1:250 | |
| VERT. SCALE | DATE |
| AS SHOWN | 12/04/19 |
| | JGK |
| No. REVISIONS | BY |
| 0 | |
| | JGK |

MORRISON HERSHFIELD

DESIGNED BY: JGK
CHECKED BY: RPB
DRAWN BY: DID/DML
APPROVED BY: BWB
HOR. SCALE: 1:250
VERT. SCALE: AS SHOWN
DATE: 12/04/19

PROFESSIONAL'S SEAL
PROVINCE OF MANITOBA
J.G. KENNEDY
Member
22326
APR 19/12
REGISTERED PROFESSIONAL ENGINEER

THE CITY OF WINNIPEG
PUBLIC WORKS DEPARTMENT
ENGINEERING DIVISION

2012 REGIONAL & LOCAL STREET ALLEY PACKAGE
McGREGOR STREET WEST ALLEY
BETWEEN KINGSBURY AVENUE & McGREGOR STREET
HORIZONTAL AND VERTICAL ALIGNMENT
STA 0+310 TO STA 0+404

CITY DRAWING NUMBER: N/A
SHEET 13 OF 17
DRAWING No. 13
REV 0