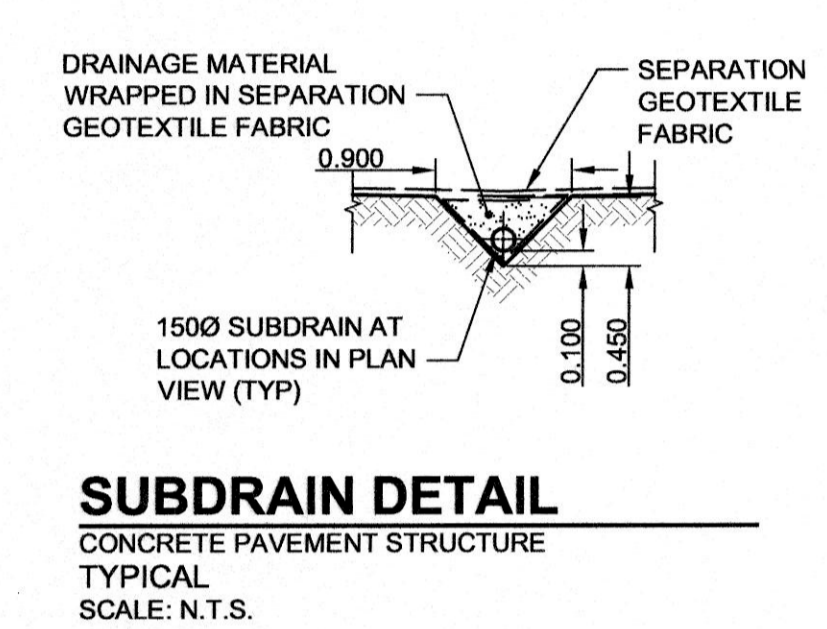
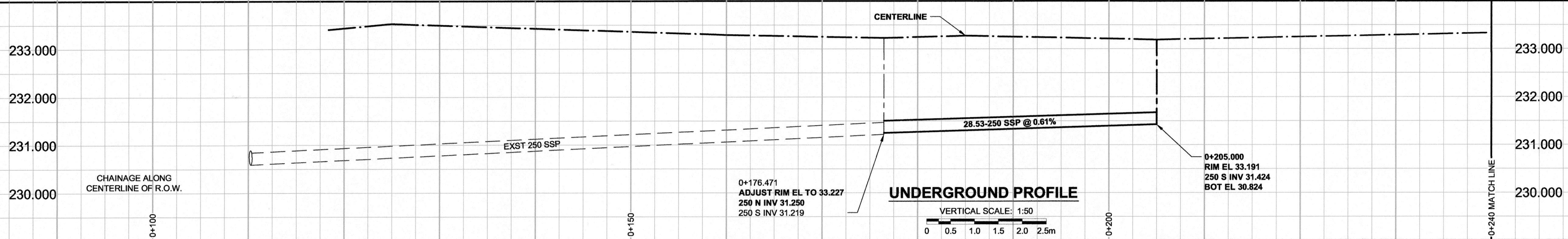
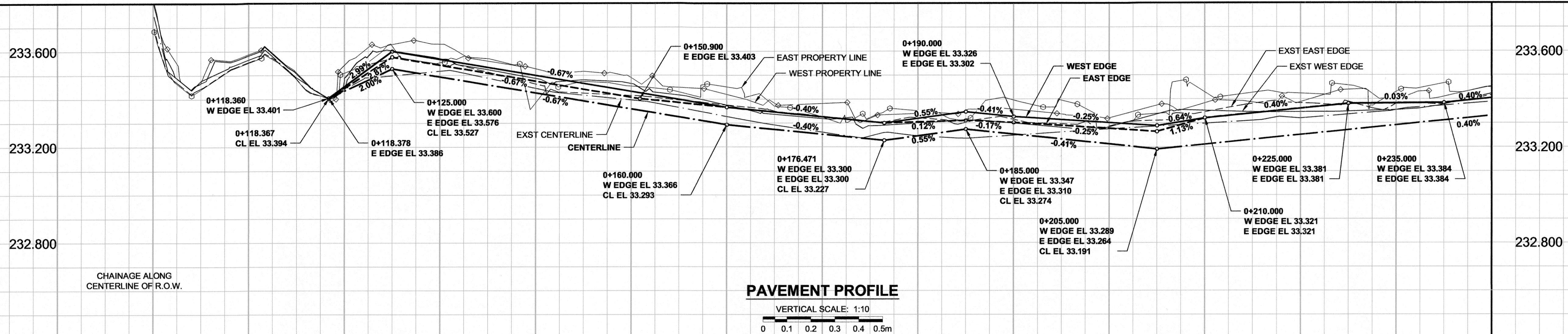
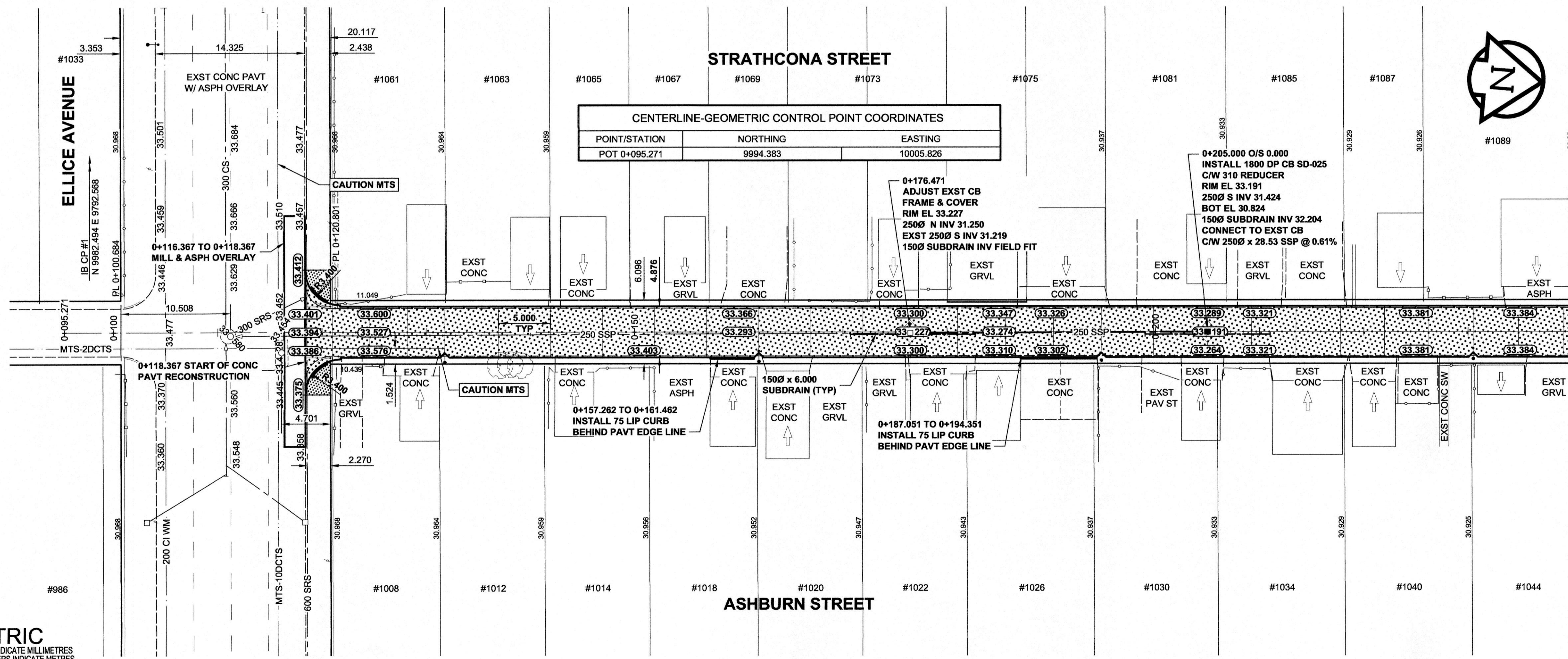


AS SIZE 594mm x 841mm

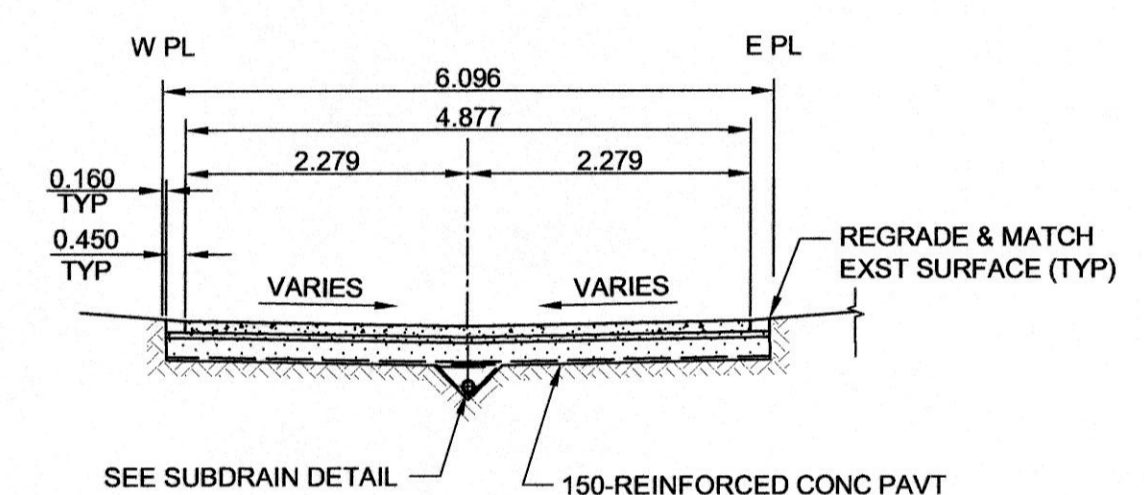
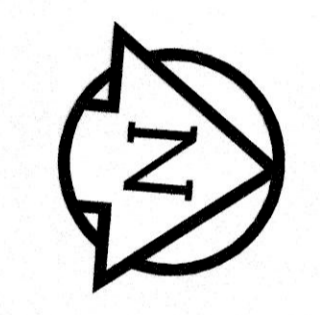


PL01: 4/18/2012 1:49:54 PM



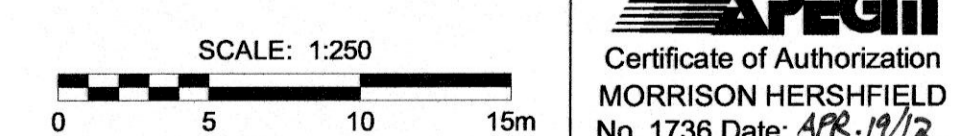
CENTERLINE-GEOMETRIC CONTROL POINT COORDINATES

POINT/STATION	NORTHING	EASTING
POT 0+095.271	9994.383	10005.826



NOTE:
CONTRACTOR TO NOTE VARYING CROSSFALL AND USE APPROPRIATE PAVING METHODS TO ACHIEVE THIS.

- NOTES**
- ADJUST MH AND CB RIMS TO NEW GRADES.
 - LAMP STANDARDS, HYDRO POLES, AND ANCHORS THAT REQUIRE TEMPORARY SUPPORT, REMOVAL OR REPLACEMENT TO BE DONE SO AT THE EXPENSE OF THE CONTRACTOR.
 - CONTRACTOR TO REGRADE/RENEW EXST PRIVATE SIDEWALKS TO LIMITS AS SHOWN. SIDEWALKS TO BE RENEWED WITH CONCRETE UNLESS NOTED OTHERWISE.
 - CONTRACTOR SHALL TAKE PRECAUTIONARY STEPS TO PROTECT EXISTING TREES WITHIN THE LIMITS OF CONSTRUCTION FROM DAMAGE FROM CONSTRUCTION ACTIVITIES AS OUTLINED IN THE SPECIFICATIONS.
 - MODIFIED BARRIER CURB TO BE USED AT ALL INTERSECTION RADII, BACK LANE RADII AND BULLNOSES.
 - CONTRACTOR SHALL CONFIRM THE LOCATION OF ALL UTILITIES/SERVICES IN THE FIELD PRIOR TO CONSTRUCTION. TO OBTAIN GEODETIC ELEVATIONS.
 - ADD 200.000m TO ABBREVIATED ELEVATIONS TO OBTAIN GEODETIC ELEVATIONS.
 - LIMITS AND MATERIALS OF DRIVEWAYS REQUIRING PARTIAL RECONSTRUCTION WILL BE DETERMINED IN THE FIELD BY THE CONTRACT ADMINISTRATOR.



APEGM
Certificate of Authorization
MORRISON HERSHFIELD
No. 1736 Date: APR 19/12

BID OPPORTUNITY No. 239-2012

METRIC
WHOLE NUMBERS INDICATE MILLIMETRES
DECIMALIZED NUMBERS INDICATE METRES

EXISTING	LEGEND - PLAN	NEW	EXISTING	LEGEND - PLAN	NEW	EXISTING	LEGEND - PLAN	NEW	
	GAS		MANHOLE		CONCRETE PAVEMENT		LOCATION APPROVED		BM
	MTS		CATCH BASIN / CATCH PIT		CONC SIDEWALK / MEDIAN		SUPR. U/G STRUCTURES		GBN No. 36-011
	HYDRO		CURB INLET WITH BOX		CONC PAVEMENT		DATE		ELEV 233.048m
	CATV / FIBRE OPTIC		TREE		ASPHALT PAVEMENT		COMMITTEE		DATE
	TRAFFIC SIGNALS / PIT		TEST HOLE		PAVING STONE		NOTE:		DATE
	LAND DRAINAGE SEWER		PROPERTY LINE		GRAVEL		LOCATION OF UNDERGROUND STRUCTURES		DATE
	SANITARY/COMBINED SEWER		SURVEY BAR		RAMP CURB		INFORMATION AVAILABLE		DATE
	SSP/DCP		FENCE		PLANING / REMOVAL		NO GUARANTEE		DATE
	WATERMAIN		BOC / EDGE OF PAVEMENT		DATE		EXISTING UTILITIES		DATE
	SUBDRAIN		ELEVATION		DATE		CONFIRMATION OF EXISTENCE		DATE
	DITCH		TRAFFIC SIGN		DATE		EXACT LOCATION OF ALL SERVICES		DATE
	DITCH		TRAFFIC SIGN		DATE		MUST BE OBTAINED FROM THE INDIVIDUAL UTILITIES		DATE

LOCATION APPROVED
UNDERGROUND STRUCTURES

SUPR. U/G STRUCTURES DATE COMMITTEE

NOTE:
LOCATION OF UNDERGROUND STRUCTURES AS SHOWN ARE BASED ON THE BEST INFORMATION AVAILABLE. BUT NO GUARANTEE IS GIVEN THAT ALL EXISTING UTILITIES ARE SHOWN OR THAT THE GIVEN LOCATIONS ARE EXACT. CONFIRMATION OF EXISTENCE AND EXACT LOCATION OF ALL SERVICES MUST BE OBTAINED FROM THE INDIVIDUAL UTILITIES BEFORE PROCEEDING WITH CONSTRUCTION.

No.	ISSUED FOR CONSTRUCTION	DATE	BY
0	ISSUED FOR CONSTRUCTION	12/04/19	JGK
	REVISIONS	YYMMDD	BY

DESIGNED BY	CHECKED BY
JGK	RPB
DRAWN BY	APPROVED BY
DID/DML	BWB
HOR. SCALE	RELEASED FOR CONSTRUCTION
1:250	DATE
VERT. SCALE	DATE
AS SHOWN	APRIL 19/12

PROFESSIONAL'S SEAL
PROVINCE OF MANITOBA
J.G. Kennedy
Member
22326
APR 19/12
REGISTERED PROFESSIONAL ENGINEER
CONSULTANT DRAWING No.
W11401400-T-015_R0.dwg

THE CITY OF WINNIPEG
PUBLIC WORKS DEPARTMENT
ENGINEERING DIVISION

2012 REGIONAL & LOCAL STREET ALLEY PACKAGE
STRATHCONA-ASHBURN ALLEY
BETWEEN ELLICE AVENUE & SARGENT AVENUE
HORIZONTAL AND VERTICAL ALIGNMENT
STA 0+118 TO STA 0+240

CITY DRAWING NUMBER N/A
SHEET 15 OF 17
DRAWING No. 15
REV 0