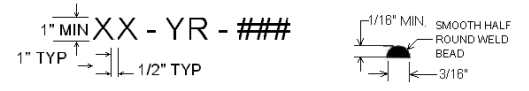


ITEM No.	No. REQ'D	DESCRIPTION	MATERIAL	DWG No.
1	2	OCT. SECT. DAVIT 4 7/8" A/F TO 3 9/16" A/F EXTERIOR DIM.	7 GA. A570 GR.50	
2	8	BOLT 3/4"-10 UNC x 3" LONG	S&E GR5. 5/8" x 1" FLAT WASHER, 1 HEAVY HEX NUT & 1 HEAVY JAM NUT, GALV'D	
3	2	8 FT. OCT SECT ARM 3 9/16" A/F TO 2 7/8" A/F EXT. DIM.	7 GA. A570 GR.50	
4	or 2	4 FT. OCT SECT ARM 3 9/16" A/F TO 2 3/4" A/F EXT. DIM.	11 GA. A570 GR.50	
5	4	FLANGE 6 3/4" SQUARE	3/4" PL. Q40.21 44W	
6	4	BACKUP STRIP 1" x LENGTH TO SUIT	7 GA. A570 GR.50	
7	1	RE-INFORCING STRIP SIZE TO SUIT	7 GA. A570 GR.50	
8	2	TENON 2" IPS (2 3/8" OD) x 14" LONG.	A53 GRB SCHED.40	

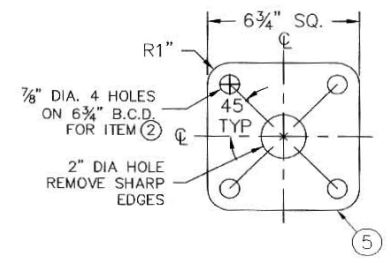
FINISH:
HOT DIP GALVANIZE TO CSA STANDARD G184-M92 TO NET MINIMUM RETENTION OF 800 g/m²
ALL AREAS OF DAMAGED GALVANIZING SHALL BE REPAIRED WITH SELF FLUXING LOW TEMPERATURE ZINC BASED ALLOY ROD. USE OF SPRAY ON COATINGS IS NOT ACCEPTABLE.

- NOTES:**
- WELDING**
ALL WELDING SHALL CONFORM TO CSA STANDARD W58. FABRICATOR SHALL BE FULLY APPROVED BY THE CANADIAN WELDING BUREAU AS PER CSA STANDARD W47.1. LONGITUDINAL SEAM WELD SHALL HAVE 80% MINIMUM PENETRATION EXCEPT 4 1/2" FROM LOWER END OF DAVIT AND 3" FROM EACH FLANGE SHALL BE COMPLETE PENETRATION. THE START AND END SHALL BE SMOOTH AND FREE OF NOTCHES OR OTHER WELD DEFECTS. THE LONGITUDINAL SEAM WELD IN ITEM 1 DAVIT SECTIONS SHALL BE ADJACENT TO THE FLAT WHICH IS OUTERMOST FLAT THROUGH THE BEND. BACKUP STRIP AT ARM TO FLANGE AND DAVIT TO FLANGE CONNECTION SHALL HAVE CONTINUOUS FILLET WELD AROUND INTERIOR FACE OF BACKUP STRIP.
 - TOLERANCES**
ALL ACROSS FLATS (A/F) ARE EXTERIOR DIMENSIONS. THE BOTTOM OF DAVIT SHALL BE 4 3/4" + 0", -1/4". THE DAVIT AT FLANGE AND ARM AT FLANGE SHALL BE 3 9/16", +0", -1/4". AT TENON END OF 8 FT. ARM IT SHALL BE 2 3/4" + 0", -1/4", A/F AND AT END OF 4 FT. ARM IT SHALL BE 2 3/4" + 0", -1/4".
 - IDENTIFICATION**
WELD IDENTIFICATION CODE XX-YR-### ON DAVIT ARM AT 12" TO 18" FROM BOTTOM ON ARM WITHIN 12" FROM FLANGE. XX IS THE POLE MANUFACTURER'S CODE. YR IS THE LAST TWO DIGITS OF THE YEAR OF MANUFACTURE, AND ### IS THE POLE NUMBER STARTING WITH 001 AND PROCEEDING CONSECUTIVELY FOR EACH ADDITIONAL POLE DURING THE YEAR OF MANUFACTURE.

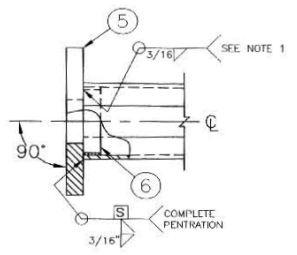


4. LOADING AND DESIGN CRITERIA SHOWN ON SHEET 2 OF DRAWING ST-101

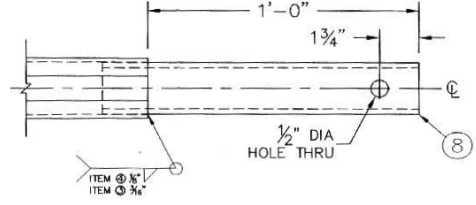
1	JUNE 21 2004	REDRAWN		
REV. No.	DATE	REVISIONS	APPROVED	
 THE CITY OF WINNIPEG PUBLIC WORKS DEPARTMENT TRANSPORTATION DIVISION				
GES ENGINEERING INC. CALGARY, AB. PHONE (403) 240-2921 FAX (403) 240-3713				
TRAFFIC SIGNAL LIGHT DUTY DOUBLE DAVIT ARMS OF 8 FT AND 12 FT REACH				
DESIGNED AND APPROVED <i>D. Selme</i> DATE <i>July 23, 2004</i>	DRAWN G.G. DATE JUNE 21, 2004	DWG No. ST-136	SCALE NTS	SHEET 1 OF 1
			REV. No. 1	



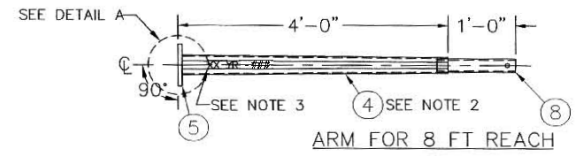
FLANGE DETAIL



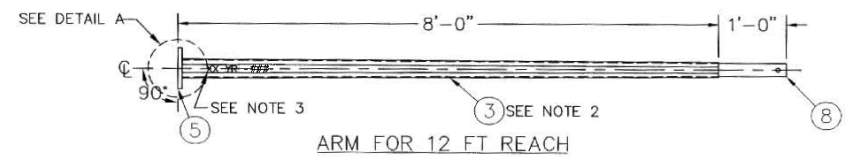
DETAIL A



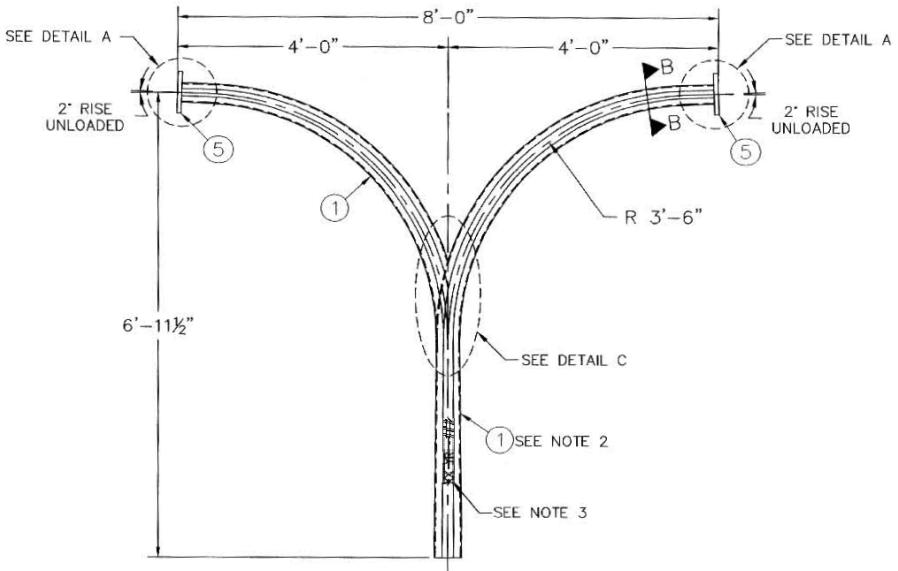
TENON DETAIL



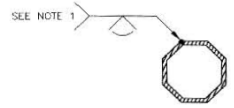
ARM FOR 8 FT REACH



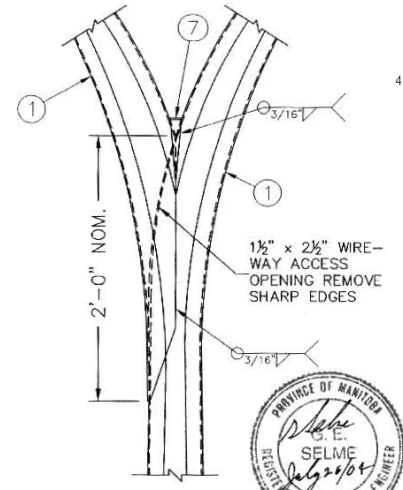
ARM FOR 12 FT REACH



DOUBLE DAVIT FOR 8 FT OR 12 FT REACH ARMS



SECTION B-B



DETAIL "C"

