

**REFERENCE NOTES**

- A. PAVEMENT DIMENSIONS ARE TO BACK OF CURB
- B. BASELINE IS CENTRE LINE RIGHT-OF-WAY
- C. PROPERTY LINES OBTAINED FROM CITY OF WINNIPEG L.B.I.S., AND NO SCALE FACTOR WAS APPLIED
- D. REFER TO AECOM FIELD BOOK NO. 4740

**CONSTRUCTION NOTES**

1. REMOVE EXISTING CONCRETE PAVEMENT AND CONSTRUCT NEW 150mm REINFORCED CONCRETE PAVEMENT
2. CONSTRUCT NEW MODIFIED BARRIER CURB (180mm HT, INTEGRAL)
3. CONSTRUCT NEW BARRIER CURB (180mm HT, SEPARATE)
4. INSTALL NEW CURB AND GUTTER INLET c/w CATCH BASIN (SD-024) AND CONNECT NEW 250mm LEAD TO EXISTING SEWER
5. REMOVE EXISTING CATCHBASIN AND CURB AND GUTTER INLET AND PLUG EXISTING LEAD
6. INSTALL 150mm SUBDRAIN 6m ON EACH SIDE OF CATCHBASIN
7. RENEW EXISTING 100mm CONCRETE SIDEWALK
8. ADJUST EXISTING MANHOLE TO GRADE
9. ADJUST EXISTING WATER VALVE TO GRADE
10. REMOVE EXISTING FRAME AND COVER AND PLACE NEW FRAME AND COVER (AP-04/AP-005)
11. INSTALL NEW CAST IRON RISER RING
12. REMOVE EXISTING ASPHALT AND PLACE NEW ASPHALT
13. CONSTRUCT NEW 150mm REINFORCED CONCRETE PAVEMENT c/w 50mm TYPE 1A ASPHALT PAVEMENT



**METRIC**  
WHOLE NUMBERS INDICATE MILLIMETRES  
DECIMALIZED NUMBERS INDICATE METRES

150 mm W.M.	WATERMAIN	150 mm W.M.	HYDRO	— x —	PROPERTY LINE
Hydrant	HYDRANT	Manhole	M.T.S.	— □ —	SURVEY BAR
Valve	VALVE	Catch Basin	CONCRETE	— ▨ —	ELEVATION
300mm L.D.S.	LAND DRAINAGE SEWER	Curbside Inlet	ASPHALT	— ▨ —	35.750
250mm W.W.S.	WASTEWATER SEWER	Junctions	PROPERTY LINE	— ▨ —	TREE
Manhole	MANHOLE	Culvert	SURVEY BAR	— ▨ —	SIDEWALK RAMP
Catch Basin	CATCH BASIN	Gas	ELEVATION	— ▨ —	CONCRETE SIDEWALK
Curbside Inlet	CURBSIDE INLET	Existing	PROPERTY LINE	— ▨ —	FENCE
Junctions	JUNCTIONS	Proposed	SURVEY BAR	— ▨ —	LEGEND - PLAN
Culvert	CULVERT	Existing	ELEVATION	— ▨ —	PROPOSED
Gas	GAS	Proposed	CONCRETE SIDEWALK	— ▨ —	LEGEND - PROFILE
Existing	LEGEND - PLAN	Proposed	FENCE	— ▨ —	PROPOSED

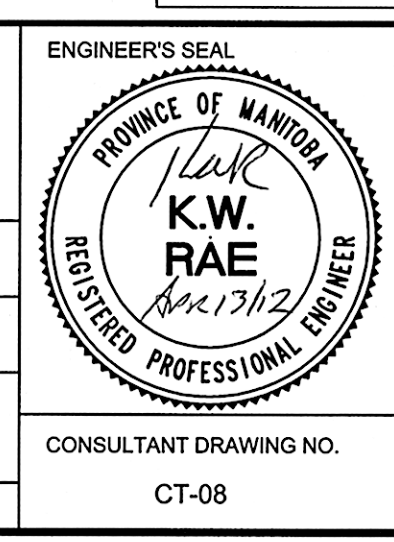
**LOCATION APPROVED UNDERGROUND STRUCTURES**

SUPV. U/G STRUCTURES COMMITTEE DATE

**NOTE:**  
LOCATION OF UNDERGROUND STRUCTURES AS SHOWN ARE BASED ON THE BEST INFORMATION AVAILABLE. BUT NO GUARANTEE IS GIVEN THAT ALL EXISTING UTILITIES ARE SHOWN OR THAT THE GIVEN LOCATIONS ARE EXACT. CONFIRMATION OF EXISTENCE AND EXACT LOCATION OF ALL SERVICES MUST BE OBTAINED FROM THE INDIVIDUAL UTILITIES BEFORE PROCEEDING WITH CONSTRUCTION.

B.M. 51-012	N.W. Cor. Grant Ave. & Lanark St., Tbl. in S. Conc. foundation of John Daloz School, No. 1777 Grant Ave., 1.5m W. of S.E. Cor. & 0.2 m below top of foundation of school.
ELEV. 233.942	
NO.	REVISIONS
DATE	BY

DESIGNED BY	BC	CHECKED BY	KWR
DRAWN BY	MS	APPROVED BY	
HOR. SCALE:	1:250	RELEASED FOR CONSTRUCTION BY:	
VERTICAL:	1:10	DATE	April 13/12



**THE CITY OF WINNIPEG**  
PUBLIC WORKS DEPARTMENT  
ENGINEERING DIVISION

2012 LOCAL STREET RENEWAL PROGRAM

LANARK STREET - MATHERS AVE. TO GRANT AVE.  
PAVEMENT RECONSTRUCTION  
STATION 0+210 TO STATION 0+330

CITY DRAWING NUMBER  
SHEET 8 OF 19

CONSULTANT DRAWING NO.  
CT-08