

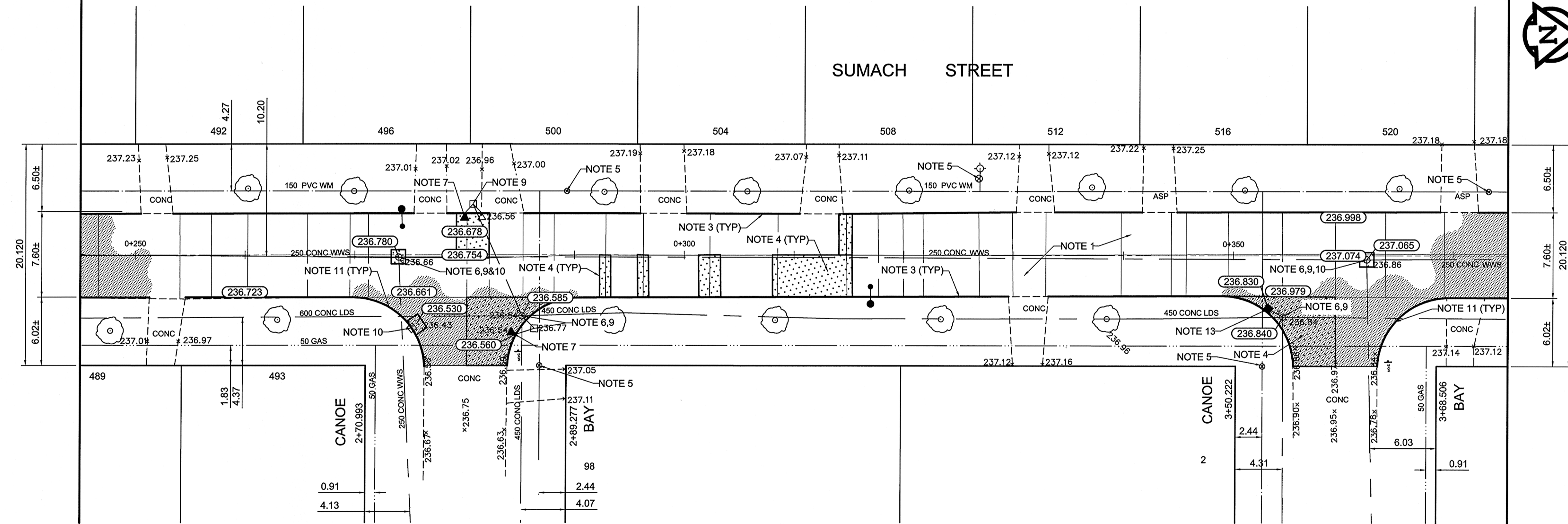
SUMACH STREET

REFERENCE NOTES

- A. PAVEMENT DIMENSIONS ARE TO BACK OF CURB
- B. BASELINE IS CENTRE LINE RIGHT-OF-WAY
- C. PROPERTY LINES OBTAINED FROM CITY OF WINNIPEG L.B.I.S., AND NO SCALE FACTOR WAS APPLIED
- D. REFER TO AECOM FIELD BOOK NO. 4738

CONSTRUCTION NOTES

1. PLACE NEW ASPHALTIC CONCRETE PAVEMENT TYPE 1A (AVERAGE THICKNESS 80mm)
2. ADJUST EXISTING CURB INLET AND COVER
3. PLANE EXISTING 120mm MOUNTABLE LIP CURB AND CONSTRUCT BARRIER CURB (DOWELLED)
4. RENEW EXISTING 150mm CONCRETE PAVEMENT (REINFORCED)
5. ADJUST EXISTING VALVE TO GRADE
6. INSTALL NEW CAST IRON RISER RING
7. REMOVE EXISTING CATCHPIT AND AND INSTALL NEW CURB AND GUTTER INLET COMPLETE WITH CATCHPIT (SD-023) AND CONNECT TO EXISTING CATCH BASIN
8. REMOVE AND REINSTALL PAVING STONES
9. ADJUST EXISTING MANHOLE/CATCHBASIN TO GRADE
10. REMOVE EXISTING FRAME AND COVER AND PLACE NEW FRAME AND COVER
11. CONSTRUCT NEW MODIFIED BARRIER CURB (180mm HT, INTEGRAL)
12. RENEW EXISTING 100mm CONCRETE SIDEWALK
13. INSTALL NEW CURB AND GUTTER INLET c/w CATCH BASIN(SD-024) AND CONNECT 250mm LEAD TO EXISTING 450mm LDS



METRIC  
WHOLE NUMBERS INDICATE MILLIMETRES  
DECIMALIZED NUMBERS INDICATE METRES

EXISTING	LEGEND - PLAN	PROPOSED	EXISTING	LEGEND - PLAN	PROPOSED	EXISTING	LEGEND - PROFILE	PROPOSED
	WATERMAIN			HYDRO			C PROFILE	
	HYDRANT			M.T.S.			NORTH/WEST GUTTER	
	VALVE			CONCRETE			SOUTH/EAST GUTTER	
	LAND DRAINAGE SEWER			ASPHALT			N/W PROPERTY LINE	
	WASTEWATER SEWER			PROPERTY LINE			S/E PROPERTY LINE	
	MANHOLE			SURVEY BAR				
	CATCH BASIN			ELEVATION				
	CURB INLET			TREE				
	JUNCTIONS			SIDEWALK RAMP				
	CULVERT			CONCRETE SIDEWALK				
	GAS			FENCE				

LOCATION APPROVED UNDERGROUND STRUCTURES

SUPV. U/G STRUCTURES COMMITTEE DATE

NOTE:  
LOCATION OF UNDERGROUND STRUCTURES AS SHOWN ARE BASED ON THE BEST INFORMATION AVAILABLE, BUT NO GUARANTEE IS GIVEN THAT ALL EXISTING UTILITIES ARE SHOWN OR THAT THE GIVEN LOCATIONS ARE EXACT. CONFIRMATION OF EXISTENCE AND EXACT LOCATION OF ALL SERVICES MUST BE OBTAINED FROM THE INDIVIDUAL UTILITIES BEFORE PROCEEDING WITH CONSTRUCTION.

B.M. 41-014	ELEV. 238.623	S. side Allard Ave. @ Best St. Tbt. In N. Conc. foundation of Winnipeg Police Dept. Training Div. 0.3 m E. & 0.5 m below brick of N.W. Cor. of Bldg.	
DESIGNED BY	SS	CHECKED BY	KWR
DRAWN BY	MS	APPROVED BY	
ISSUED FOR TENDER	04/13/2012	BC	
ISSUED FOR REVIEW	03/28/2012	BC	
REVISIONS			

<b>AECOM</b>	
DESIGNED BY	SS
DRAWN BY	MS
ISSUED FOR TENDER	04/13/2012 BC
ISSUED FOR REVIEW	03/28/2012 BC
REVISIONS	

ENGINEER'S SEAL	PROVINCE OF MANITOBA
	K.W. RAE
CONSULTANT DRAWING NO.	CT-13

THE CITY OF WINNIPEG  
PUBLIC WORKS DEPARTMENT  
ENGINEERING DIVISION

2012 LOCAL STREET RENEWAL PROGRAM

SUMACH ST. - ALLARD AVENUE TO PORTAGE AVENUE  
PAVEMENT REHABILITATION  
STATION 0+245 TO STATION 0+375

CITY DRAWING NUMBER  
SHEET 13 OF 19