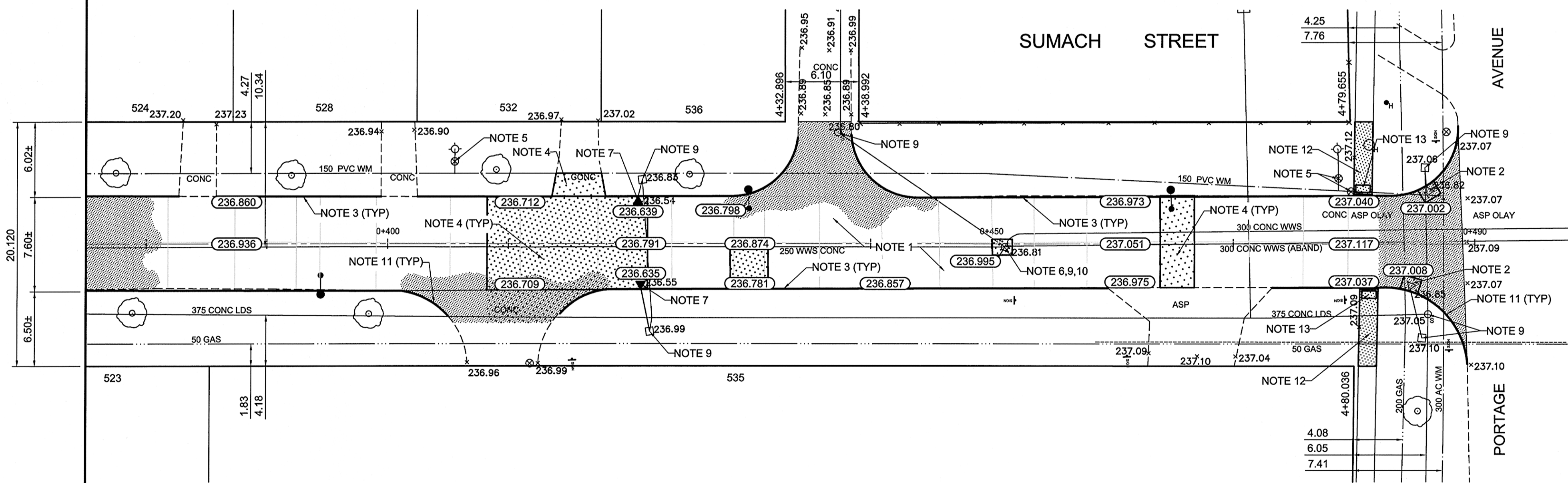


REFERENCE NOTES

- A. PAVEMENT DIMENSIONS ARE TO BACK OF CURB
- B. BASELINE IS CENTRE LINE RIGHT-OF-WAY
- C. PROPERTY LINES OBTAINED FROM CITY OF WINNIPEG L.B.I.S., AND NO SCALE FACTOR WAS APPLIED
- D. REFER TO AECOM FIELD BOOK NO. 4738

CONSTRUCTION NOTES

1. PLACE NEW ASPHALTIC CONCRETE PAVEMENT TYPE 1A (AVERAGE THICKNESS 85mm)
2. ADJUST EXISTING CURB INLET AND COVER
3. PLANE EXISTING 120mm MOUNTABLE LIP CURB AND CONSTRUCT BARRIER CURB (DOWELLED)
4. RENEW EXISTING 150mm CONCRETE PAVEMENT (REINFORCED)
5. ADJUST EXISTING VALVE TO GRADE
6. INSTALL NEW CAST IRON RISER RING
7. REMOVE EXISTING CATCHPIT AND AND INSTALL NEW CURB AND GUTTER INLET COMPLETE WITH CATCHPIT (SD-023) AND CONNECT TO EXISTING CATCH BASIN
8. REMOVE AND REINSTALL PAVING STONES
9. ADJUST EXISTING MANHOLE/CATCHBASIN TO GRADE
10. REMOVE EXISTING FRAME AND COVER AND PLACE NEW FRAME AND COVER
11. CONSTRUCT NEW MODIFIED BARRIER CURB (150mm HT, DOWELLED)
12. RENEW EXISTING 100mm CONCRETE SIDEWALK
13. INSTALL NEW SURFACE DETECTABLE WARNING TILE



METRIC
WHOLE NUMBERS INDICATE MILLIMETRES
DECIMALIZED NUMBERS INDICATE METRES

150 mm W.M.	WATERMAIN	150 mm W.M.	HYDRO	— x —	PROFILE
Hydrant	HYDRANT	Manhole	M.T.S.	Northwest Gutter	NORTHWEST GUTTER
Valve	VALVE	Catch Basin	CONCRETE	South/East Gutter	SOUTH/EAST GUTTER
300mm L.D.S.	LAND DRAINAGE SEWER	Curbside Inlet	ASPHALT	NW Property Line	NW PROPERTY LINE
250mm W.W.S.	WASTEWATER SEWER	Junction	PROPERTY LINE	S/E Property Line	S/E PROPERTY LINE
Manhole	MANHOLE	Culvert	SURVEY BAR		
Catch Basin	CATCH BASIN	Gas	ELEVATION (35.750)		
Curbside Inlet	CURB INLET	Existing	TREE		
Junction	JUNCTION	Proposed	SIDEWALK RAMP		
Culvert	CULVERT	Existing	CONCRETE SIDEWALK		
Gas	GAS	Proposed	FENCE		
Existing	LEGEND - PLAN	Proposed	LEGEND - PLAN	Proposed	LEGEND - PROFILE

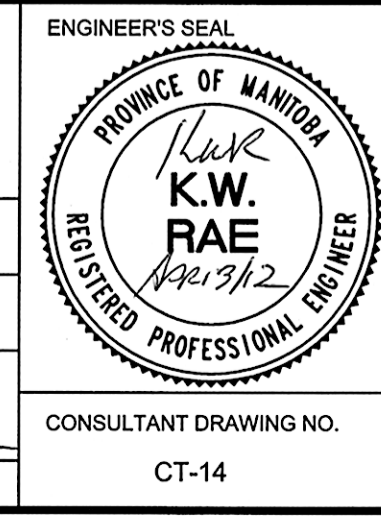
LOCATION APPROVED UNDERGROUND STRUCTURES

SUPV. U/G STRUCTURES COMMITTEE DATE

NOTE:
LOCATION OF UNDERGROUND STRUCTURES AS SHOWN ARE BASED ON THE BEST INFORMATION AVAILABLE BUT NO GUARANTEE IS GIVEN THAT ALL EXISTING UTILITIES ARE SHOWN OR THAT THE GIVEN LOCATIONS ARE EXACT. CONFIRMATION OF EXISTENCE AND EXACT LOCATION OF ALL SERVICES MUST BE OBTAINED FROM THE INDIVIDUAL UTILITIES BEFORE PROCEEDING WITH CONSTRUCTION.

B.M. 41-014	ELEV. 238.623	S. side Allard Ave. @ East St. Toll. In N. Conc. foundation of Winnipeg Police Dept. Training Div., 0.3 m E. & 0.5 m below curb of N.W. Cor. of Bldg.
NO.	REVISIONS	DATE BY
0	ISSUED FOR TENDER	04/13/2012 BC
A	ISSUED FOR REVIEW	03/28/2012 BC

DESIGNED BY	SS	CHECKED BY	KWR
DRAWN BY	MS	APPROVED BY	
HOR. SCALE:	1:250	RELEASED FOR CONSTRUCTION BY:	
VERTICAL:	1:10	DATE	April 13, 12



THE CITY OF WINNIPEG
PUBLIC WORKS DEPARTMENT
ENGINEERING DIVISION

2012 LOCAL STREET RENEWAL PROGRAM

SUMACH ST. - ALLARD AVENUE TO PORTAGE AVENUE
PAVEMENT REHABILITATION
STATION 0+370 TO PORTAGE AVENUE

CITY DRAWING NUMBER
SHEET 14 OF 19

CONSULTANT DRAWING NO. CT-14