

R. M. OF WEST KILDONAN

WEST R. OF KILDONAN DRIVE

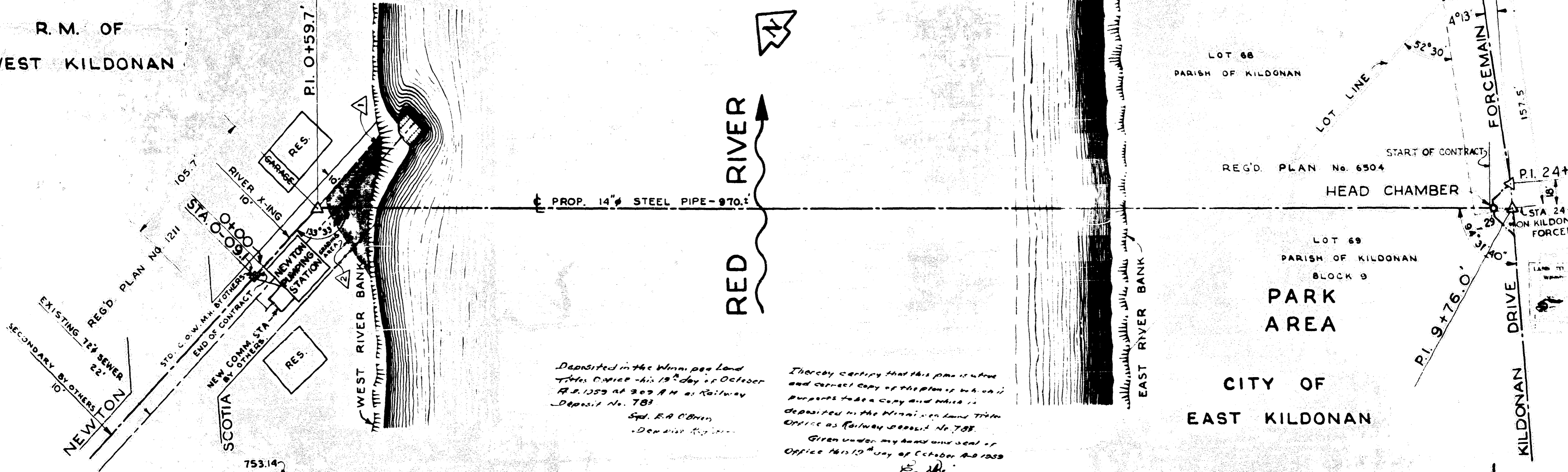
LOT 68 PARISH OF KILDONAN

REG'D. PLAN No. 6504

LOT 69 PARISH OF KILDONAN BLOCK 9

PARK AREA

CITY OF EAST KILDONAN

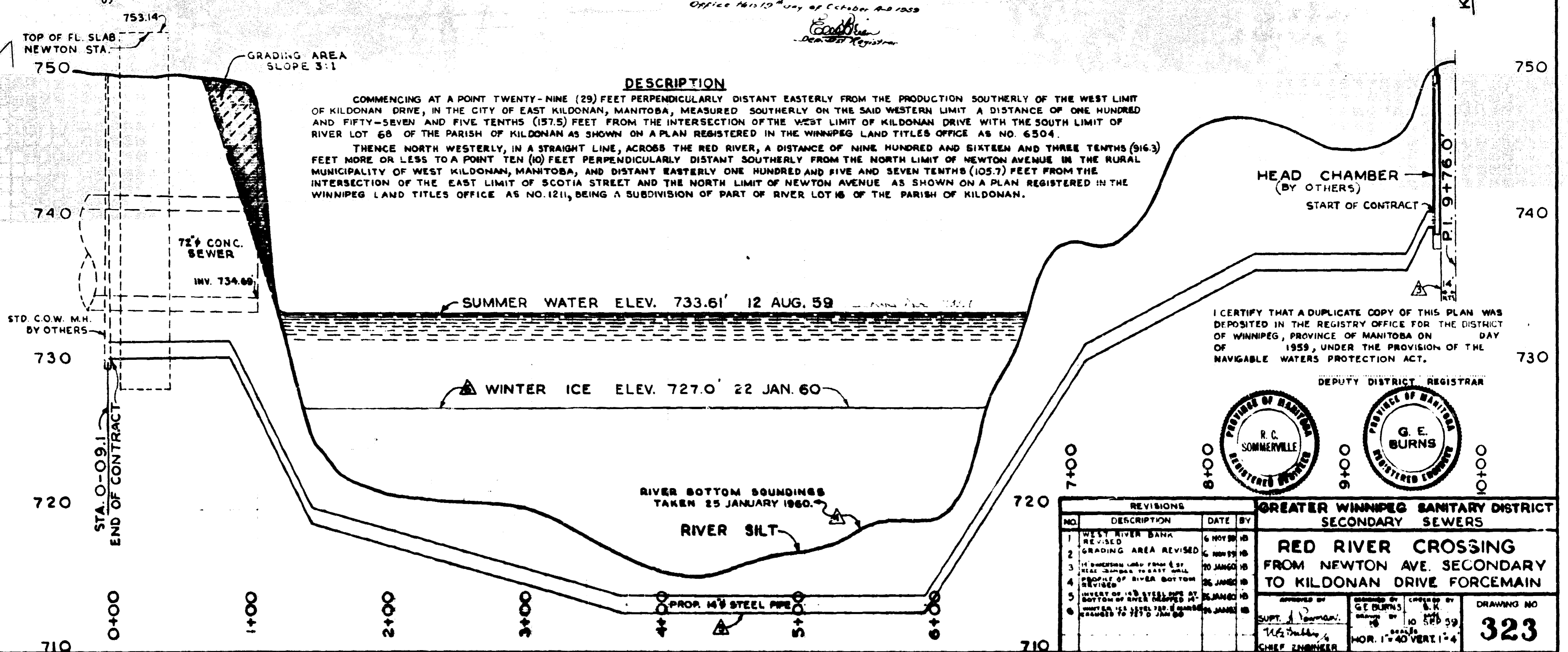


Deposited in the Winnipeg Land Titles Office - this 19th day of October A.D. 1959 at 2:05 P.M. at Railway Deposit No. 783
 Sgd. E.A. O'Brien
 Deputy Registrar

I hereby certify that this plan is a true and correct copy of the plan as shown in the original and which is deposited in the Winnipeg Land Titles Office as Railway Deposit No. 783.
 Given under my hand and seal of Office this 19th day of October A.D. 1959
 G. E. Burns
 Deputy Registrar

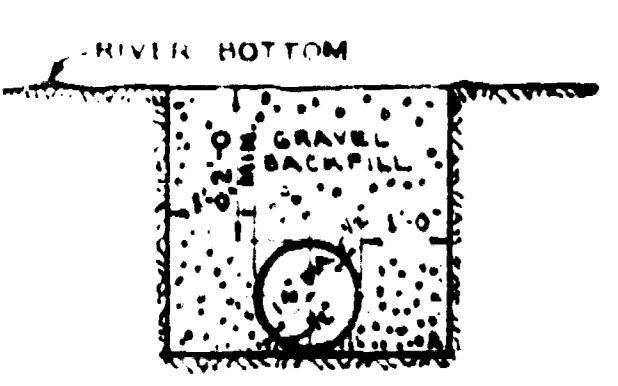
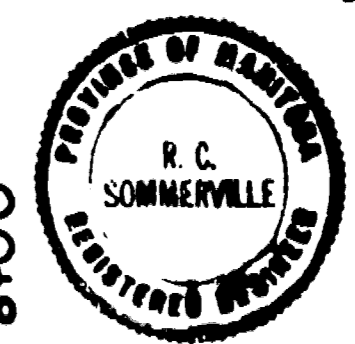
DESCRIPTION

COMMENCING AT A POINT TWENTY-NINE (29) FEET PERPENDICULARLY DISTANT EASTERLY FROM THE PRODUCTION SOUTHERLY OF THE WEST LIMIT OF KILDONAN DRIVE, IN THE CITY OF EAST KILDONAN, MANITOBA, MEASURED SOUTHERLY ON THE SAID WESTERN LIMIT A DISTANCE OF ONE HUNDRED AND FIFTY-SEVEN AND FIVE TENTHS (157.5) FEET FROM THE INTERSECTION OF THE WEST LIMIT OF KILDONAN DRIVE WITH THE SOUTH LIMIT OF RIVER LOT 68 OF THE PARISH OF KILDONAN AS SHOWN ON A PLAN REGISTERED IN THE WINNIPEG LAND TITLES OFFICE AS NO. 6504.
 THENCE NORTH WESTERLY, IN A STRAIGHT LINE, ACROSS THE RED RIVER, A DISTANCE OF NINE HUNDRED AND SIXTEEN AND THREE TENTHS (916.3) FEET MORE OR LESS TO A POINT TEN (10) FEET PERPENDICULARLY DISTANT SOUTHERLY FROM THE NORTH LIMIT OF NEWTON AVENUE IN THE RURAL MUNICIPALITY OF WEST KILDONAN, MANITOBA, AND DISTANT EASTERLY ONE HUNDRED AND FIVE AND SEVEN TENTHS (105.7) FEET FROM THE INTERSECTION OF THE EAST LIMIT OF SCOTIA STREET AND THE NORTH LIMIT OF NEWTON AVENUE AS SHOWN ON A PLAN REGISTERED IN THE WINNIPEG LAND TITLES OFFICE AS NO. 1211, BEING A SUBDIVISION OF PART OF RIVER LOT 16 OF THE PARISH OF KILDONAN.



I CERTIFY THAT A DUPLICATE COPY OF THIS PLAN WAS DEPOSITED IN THE REGISTRY OFFICE FOR THE DISTRICT OF WINNIPEG, PROVINCE OF MANITOBA ON DAY OF 1959, UNDER THE PROVISION OF THE NAVIGABLE WATERS PROTECTION ACT.

DEPUTY DISTRICT REGISTRAR



CROSS-SECTION OF 14\"/>

REVISIONS				GREATER WINNIPEG SANITARY DISTRICT SECONDARY SEWERS	
NO.	DESCRIPTION	DATE	BY		
1	WEST RIVER BANK REVISED	6 NOV 59	HS	RED RIVER CROSSING FROM NEWTON AVE. SECONDARY TO KILDONAN DRIVE FORCEMAIN APPROVED BY: Supt. J. Norman CHECKED BY: G.E. Burns DRAWING NO. 323 SCALE: HOR. 1"=40' VERT. 1"=4'	
2	GRADING AREA REVISED	6 NOV 59	HS		
3	14\"/>				
4	PROFILE OF RIVER BOTTOM REVISED	26 JAN 60	HS		
5	DEPTH OF 14\"/>				
6	WINTER ICE LEVEL 727.0' MARKED REFERRED TO 25 JAN 60	26 JAN 60	HS		