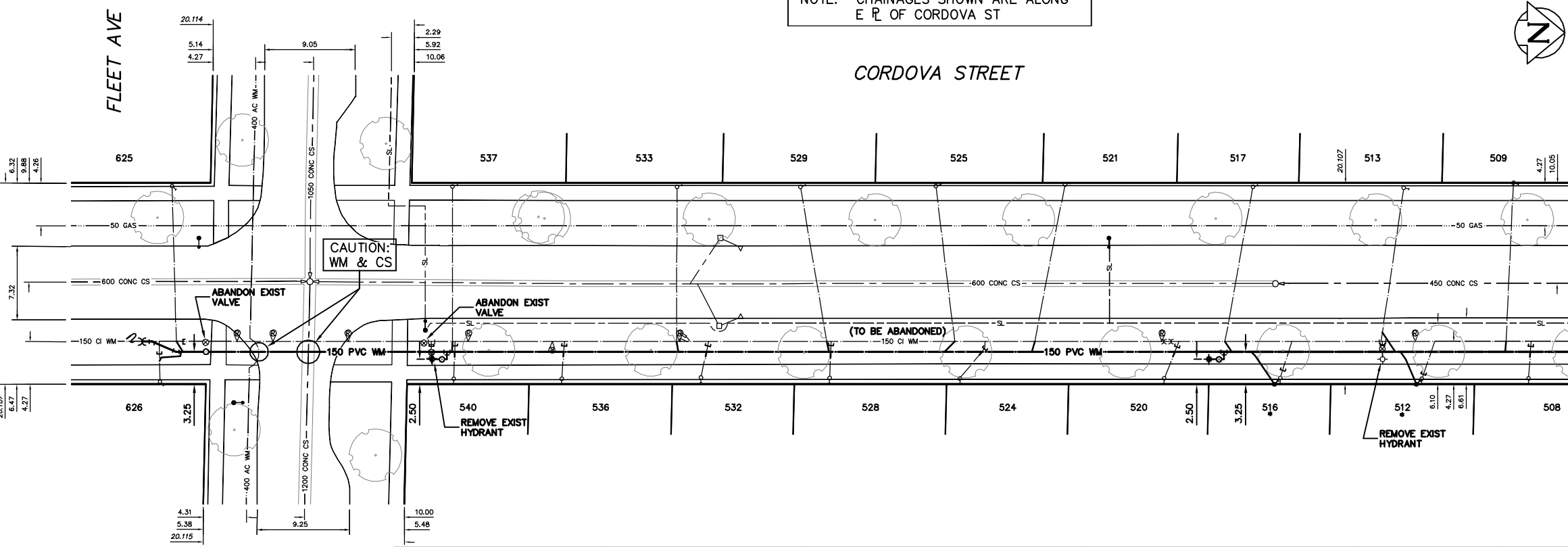


- 0+83.60 CONNECT TO EXIST 150 CI WM
- 0+94.60 INSTALL 150-22.5' BEND
- 0+97.00 INSTALL 150-22.5' BEND
- 0+98.87 ABANDON EXIST VALVE
- 1+00 S R OF FLEET AVE & INSTALL 150 VALVE
- 1+20.573 N R OF FLEET AVE
- 1+21.80 ABANDON EXIST VALVE
- 1+22.85 REMOVE EXIST HYDRANT
- 1+22.80 INSTALL HYDRANT (SD-007)
- 1+24.10 INSTALL 150X150X150 TEE
- 1+25

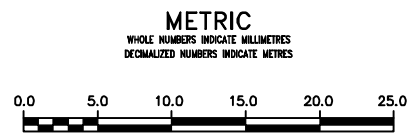
NOTE: CHAINAGES SHOWN ARE ALONG E R OF CORDOVA ST



WATER SERVICE INFORMATION					
ADDRESS	SIZE (mm) MATERIAL (STREET)	SIZE (mm) MATERIAL (PROP.)	SHORT & LONG MEASUREMENT	CORP. LOCATION	REMARKS
625 CORDOVA ST RESIDENTIAL	20 COPPER	20 COPPER	0.86 S OF N HL	0.4 N OF S/C	-
626 CORDOVA ST RESIDENTIAL	20 COPPER	20 COPPER	2.77 S OF N HL	OPP OF S/C	-
540 CORDOVA ST RESIDENTIAL	20 COPPER	20 COPPER	4.99 SSI FLEET	OPP OF S/C	-
537 CORDOVA ST RESIDENTIAL	20 COPPER	20 COPPER	3.37 S OF N HL	OPP OF S/C	-
536 CORDOVA ST RESIDENTIAL	20 COPPER	20 COPPER	4.65 NNL FLEET	OPP OF S/C	-
533 CORDOVA ST RESIDENTIAL	20 COPPER	20 COPPER	2.17 N OF S HL	OPP OF S/C	-
532 CORDOVA ST RESIDENTIAL	20 COPPER	20 COPPER	4.10 NNL FLEET	OPP OF S/C	-
529 CORDOVA ST RESIDENTIAL	20 COPPER	20 COPPER	1.95 N OF S HL	OPP OF S/C	-
528 CORDOVA ST RESIDENTIAL	20 COPPER	20 COPPER	16.29 NNL FLEET	OPP OF S/C	-
525 CORDOVA ST RESIDENTIAL	20 COPPER	20 COPPER	9.30 N OF S HL	OPP OF S/C	-
521 CORDOVA ST RESIDENTIAL	20 COPPER	20 COPPER	26.70 NNL FLEET	OPP OF S/C	-
517 CORDOVA ST RESIDENTIAL	20 COPPER	20 COPPER	2.03 N OF S HL	0.8 N OF S/C	-
513 CORDOVA ST RESIDENTIAL	20 COPPER	20 COPPER	29.34 NNL FLEET	OPP OF S/C	-
509 CORDOVA ST RESIDENTIAL	20 COPPER	20 COPPER	5.92 N OF S HL	2.7 N OF S/C	-
508 CORDOVA ST RESIDENTIAL	20 COPPER	20 COPPER	38.86 NNL FLEET	OPP OF S/C	-
525 CORDOVA ST RESIDENTIAL	20 COPPER	20 COPPER	2.27 N OF S HL	1.8 N OF S/C	-
524 CORDOVA ST RESIDENTIAL	20 COPPER	20 COPPER	3.60 N OF S HL	1.8 N OF S/C	-
521 CORDOVA ST RESIDENTIAL	20 COPPER	20 COPPER	52.39 NNL FLEET	OPP OF S/C	-
520 CORDOVA ST RESIDENTIAL	20 COPPER	20 COPPER	0.45 N OF S HL	2.6 N OF S/C	-
517 CORDOVA ST RESIDENTIAL	20 COPPER	20 COPPER	52.21 NNL FLEET	OPP OF S/C	-
516 CORDOVA ST RESIDENTIAL	20 COPPER	20 COPPER	0.25 N OF S HL	3.0 S OF S/C	-
512 CORDOVA ST RESIDENTIAL	20 COPPER	20 COPPER	65.29 NNL FLEET	OPP OF S/C	-
508 CORDOVA ST RESIDENTIAL	20 COPPER	20 COPPER	1.98 S OF N HL	1.5 N OF S/C	-
517 CORDOVA ST RESIDENTIAL	20 COPPER	20 COPPER	75.64 NNL FLEET	OPP OF S/C	-
516 CORDOVA ST RESIDENTIAL	20 COPPER	20 COPPER	5.85 N OF S HL	2.7 S OF S/C	-
513 CORDOVA ST RESIDENTIAL	20 COPPER	20 COPPER	84.07 NNL FLEET	OPP OF S/C	-
512 CORDOVA ST RESIDENTIAL	20 COPPER	20 COPPER	2.05 S OF N HL	1.2 N OF S/C	-
511 CORDOVA ST RESIDENTIAL	20 COPPER	20 COPPER	87.24 NNL FLEET	OPP OF S/C	-
509 CORDOVA ST RESIDENTIAL	20 COPPER	20 COPPER	9.08 N OF S HL	2.3 N OF S/C	-
508 CORDOVA ST RESIDENTIAL	20 COPPER	20 COPPER	2.39 S OF N HL	1.3 N OF S/C	-
508 CORDOVA ST RESIDENTIAL	20 COPPER	20 COPPER	101.39 NNL FLEET	OPP OF S/C	-
508 CORDOVA ST RESIDENTIAL	20 COPPER	20 COPPER	5.34 N OF S HL	0.7 S OF S/C	-
508 CORDOVA ST RESIDENTIAL	20 COPPER	20 COPPER	110.10 NNL FLEET	OPP OF S/C	-
508 CORDOVA ST RESIDENTIAL	20 COPPER	20 COPPER	2.81 N OF S HL	OPP OF S/C	-
508 CORDOVA ST RESIDENTIAL	20 COPPER	20 COPPER	112.09 NNL FLEET	OPP OF S/C	-

* SERVICES TO BE RENEWED TO R. ALL OTHERS TO BE RECONNECTED

MATCHLINE 2+36.475 (SEE DWG D-12741)



WARNING
IF POWER EQUIPMENT OR EXPLOSIVES ARE TO BE USED FOR EXCAVATION ON THIS PROJECT THE CONTRACTOR MUST:
1) NOTIFY THE GAS COMPANY OF THE PROPOSED LOCATION OF EXCAVATION.
2) TAKE PRECAUTION TO AVOID DAMAGE TO GAS COMPANY INSTALLATIONS.
SEE PROVINCIAL REGULATION 21072 FOR DETAILS

LOCATION APPROVED UNDERGROUND STRUCTURES
SUPV. U/G STRUCTURES COMMITTEE DATE
NOTE:
LOCATION OF UNDERGROUND STRUCTURES AS SHOWN ARE BASED ON THE BEST INFORMATION AVAILABLE BUT NO GUARANTEE IS GIVEN THAT ALL EXISTING UTILITIES ARE SHOWN OR THAT THE GIVEN LOCATIONS ARE EXACT. CONFIRMATION OF EXISTENCE AND EXACT LOCATION OF ALL SERVICES MUST BE OBTAINED FROM THE INDIVIDUAL UTILITIES BEFORE PROCEEDING WITH CONSTRUCTION.

B.M. ELEV.			
CONSTRUCTION COMPLETION DATE: YYYY MM DD			
DESIGNED BY	RL		
CHECKED BY	SC		
DRAWN BY	RS/CJH		
APPROVED BY	KZ		
S/SCALE:			
HORIZONTAL	1:250		
VERTICAL	1:50		
RELEASED FOR CONSTRUCTION			
KAS ZUREK			
DATE	MARCH 28, 2012		
NO.	REVISIONS	DATE	BY
DATE	2012 03 28	DATE	MARCH 28, 2012
PLOT DATE:	2012 03 29		

ENGINEER'S SEAL
ORIGINAL SIGNED BY S.R.J. COUNROYER 12-03-28
CONSULTANT DRAWING NUMBER

THE CITY OF WINNIPEG
WATER AND WASTE DEPARTMENT
ENGINEERING DIVISION
2012 WATERMAIN RENEWALS
CORDOVA AVENUE
FLEET AVENUE TO
126 N OF FLEET AVENUE
SHEET 3 OF 11
CITY DRAWING NUMBER
D-12740