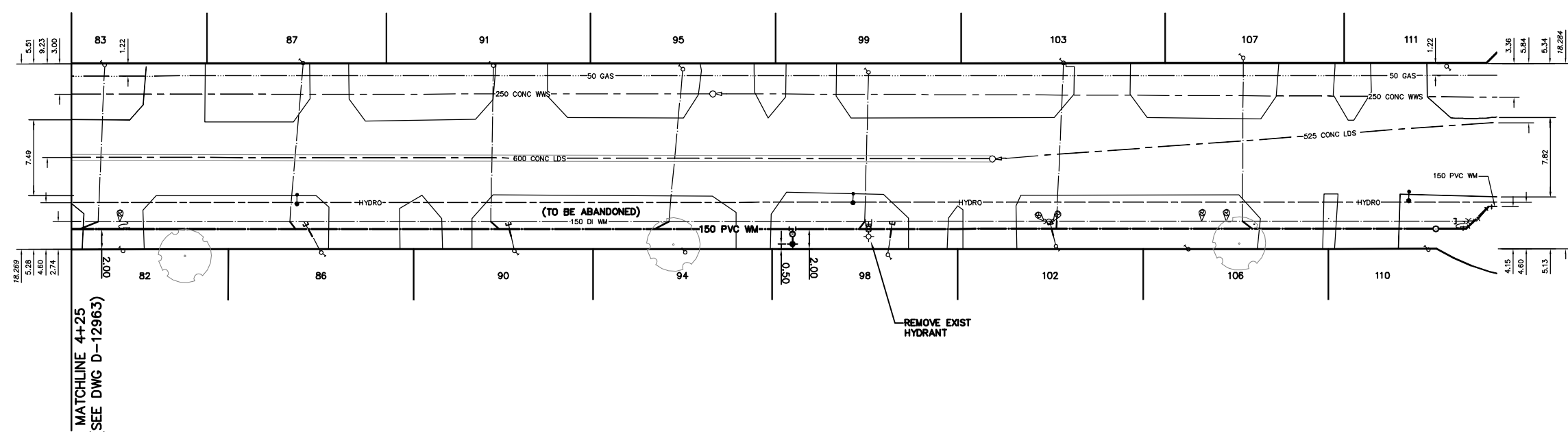


WATER SERVICE INFORMATION					
ADDRESS	SIZE (mm) MATERIAL (STREET)	SIZE (mm) MATERIAL (PROP.)	MEASUREMENT	CORP. LOCATION	REMARKS
82 EDMONT DR RESIDENTIAL	20 COPPER	20 COPPER	4.60 E OF W HL	-	-
83 EDMONT DR RESIDENTIAL	20 COPPER	20 COPPER	11.96 EEL HARWICK	-	-
86 EDMONT DR RESIDENTIAL	20 COPPER	20 COPPER	5.00 E OF W HL	0.6 W OF S/C	-
87 EDMONT DR RESIDENTIAL	20 COPPER	20 COPPER	10.02 EEL HARWICK	-	-
88 EDMONT DR RESIDENTIAL	20 COPPER	20 COPPER	7.84 E OF W HL	-	-
89 EDMONT DR RESIDENTIAL	20 COPPER	20 COPPER	31.57 EEL HARWICK	1.7 W OF S/C	-
90 EDMONT DR RESIDENTIAL	20 COPPER	20 COPPER	7.29 E OF W HL	1.3 W OF S/C	-
91 EDMONT DR RESIDENTIAL	20 COPPER	20 COPPER	29.57 EEL HARWICK	-	-
92 EDMONT DR RESIDENTIAL	20 COPPER	20 COPPER	7.89 E OF W HL	0.6 W OF S/C	-
93 EDMONT DR RESIDENTIAL	20 COPPER	20 COPPER	50.36 EEL HARWICK	-	-
94 EDMONT DR RESIDENTIAL	20 COPPER	20 COPPER	8.25 E OF W HL	0.2 W OF S/C	-
95 EDMONT DR RESIDENTIAL	20 COPPER	20 COPPER	48.32 EEL HARWICK	-	-
96 EDMONT DR RESIDENTIAL	20 COPPER	20 COPPER	7.60 E OF W HL	-	-
97 EDMONT DR RESIDENTIAL	20 COPPER	20 COPPER	67.25 EEL HARWICK	-	-
98 EDMONT DR RESIDENTIAL	20 COPPER	20 COPPER	7.34 E OF W HL	1.4 W OF S/C	-
99 EDMONT DR RESIDENTIAL	20 COPPER	20 COPPER	67.02 EEL HARWICK	-	-
100 EDMONT DR RESIDENTIAL	20 COPPER	20 COPPER	9.47 E OF W HL	0.4 E OF S/C	-
101 EDMONT DR RESIDENTIAL	20 COPPER	20 COPPER	87.30 EEL HARWICK	-	-
102 EDMONT DR RESIDENTIAL	20 COPPER	20 COPPER	7.85 E OF W HL	0.4 W OF S/C	-
103 EDMONT DR RESIDENTIAL	20 COPPER	20 COPPER	85.32 EEL HARWICK	-	-
104 EDMONT DR RESIDENTIAL	20 COPPER	20 COPPER	7.59 E OF W HL	0.6 W OF S/C	-
105 EDMONT DR RESIDENTIAL	20 COPPER	20 COPPER	103.79 EEL HARWICK	-	-
106 EDMONT DR RESIDENTIAL	20 COPPER	20 COPPER	7.95 E OF W HL	0.7 W OF S/C	-
107 EDMONT DR RESIDENTIAL	20 COPPER	20 COPPER	104.56 EEL HARWICK	-	-
108 EDMONT DR RESIDENTIAL	20 COPPER	20 COPPER	2.32 E OF W HL	-	-
109 EDMONT DR RESIDENTIAL	20 COPPER	20 COPPER	118.86 EEL HARWICK	-	-
110 EDMONT DR RESIDENTIAL	20 COPPER	20 COPPER	5.44 E OF W HL	OPP OF S/C	-
111 EDMONT DR RESIDENTIAL	20 COPPER	20 COPPER	122.27 EEL HARWICK	-	-
112 EDMONT DR RESIDENTIAL	20 COPPER	20 COPPER	7.40 E OF W HL	-	-
113 EDMONT DR RESIDENTIAL	20 COPPER	20 COPPER	140.53 EEL HARWICK	-	-
114 EDMONT DR RESIDENTIAL	20 COPPER	20 COPPER	7.79 E OF W HL	-	-
115 EDMONT DR RESIDENTIAL	20 COPPER	20 COPPER	142.32 EEL HARWICK	-	-

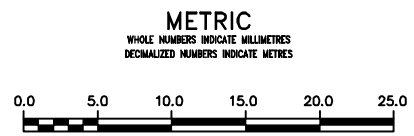
\*SERVICES TO BE RENEWED TO R ALL OTHERS TO BE RECONNECTED

NOTE: CHAINAGES SHOWN ARE ALONG S R OF EDMONT DR

EDMONT DRIVE



NOTE: ALL VALVES TO BE INSTALLED CLOCKWISE TO CLOSE W/ BLACK NUT



**WARNING**  
IF POWER EQUIPMENT OR EXPLOSIVES ARE TO BE USED FOR EXCAVATION ON THIS PROJECT THE CONTRACTOR MUST:  
1) NOTIFY THE GAS COMPANY OF THE PROPOSED LOCATION OF EXCAVATION.  
2) TAKE PRECAUTION TO AVOID DAMAGE TO GAS COMPANY INSTALLATIONS.  
SEE PROVINCIAL REGULATION 21072 FOR DETAILS

**LOCATION APPROVED UNDERGROUND STRUCTURES**  
SUPV. U/G STRUCTURES COMMITTEE DATE  
NOTE:  
LOCATION OF UNDERGROUND STRUCTURES AS SHOWN ARE BASED ON THE BEST INFORMATION AVAILABLE BUT NO GUARANTEE IS GIVEN THAT ALL EXISTING UTILITIES ARE SHOWN OR THAT THE GIVEN LOCATIONS ARE EXACT. CONFIRMATION OF EXISTENCE AND EXACT LOCATION OF ALL SERVICES MUST BE OBTAINED FROM THE INDIVIDUAL UTILITIES BEFORE PROCEEDING WITH CONSTRUCTION.

B.M. ELEV.			
CONSTRUCTION COMPLETION DATE: YYYY MM DD			
DESIGNED BY	NC		
CHECKED BY	SC		
DRAWN BY	RS		
APPROVED BY	KZ		
SCALE:			
HORIZONTAL	1:250		
VERTICAL	1:50		
RELEASED FOR CONSTRUCTION			
K.R. ZUREK			
DATE	2012 04 25		
DATE	APRIL 30, 2012		
NO.	REVISIONS	DATE	BY

ENGINEER'S SEAL  
**ORIGINAL SIGNED BY S.R.J. COURNOYER 12-04-30**  
CONSULTANT DRAWING NUMBER

DESIGNED BY NC  
CHECKED BY SC  
DRAWN BY RS  
APPROVED BY KZ  
SCALE:  
HORIZONTAL 1:250  
VERTICAL 1:50  
RELEASED FOR CONSTRUCTION  
K.R. ZUREK  
DATE 2012 04 25  
DATE APRIL 30, 2012

**THE CITY OF WINNIPEG**  
Winnipeg  
WATER AND WASTE DEPARTMENT  
ENGINEERING DIVISION  
2012 WATERMAIN RENEWALS  
SHEET 5 OF 14  
CITY DRAWING NUMBER  
**D-12964**  
EDMONT DRIVE  
7 E OF HARWICK LANE TO  
147 E OF HARWICK LANE