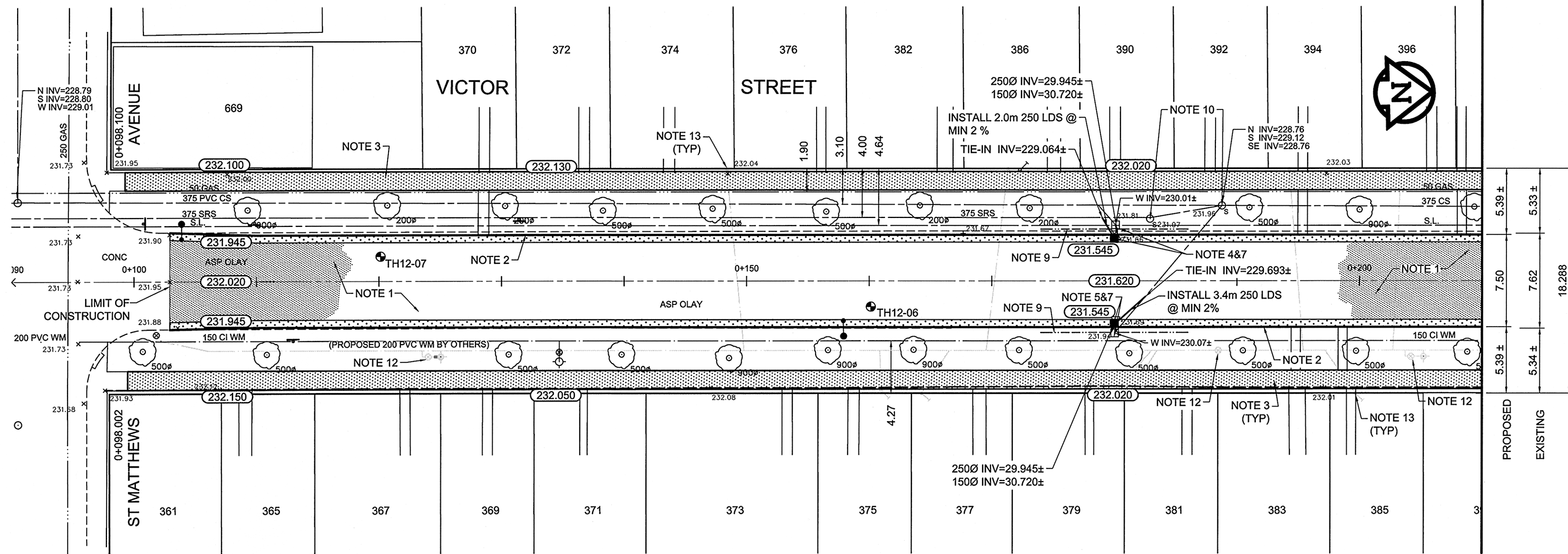


REFERENCE NOTES

- A. PAVEMENT DIMENSIONS ARE TO BACK OF CURB
- B. BASELINE IS CENTRE LINE RIGHT-OF-WAY
- C. PROPERTY LINES OBTAINED FROM CITY OF WINNIPEG L.B.I.S., AND NO SCALE FACTOR WAS APPLIED
- D. REFER TO AECOM FIELD BOOK NO. 4749

CONSTRUCTION NOTES

1. REMOVE EXISTING CONCRETE PAVEMENT AND CONSTRUCT NEW 100mm ASPHALTIC PAVEMENT (TYPE 1A)
2. CONSTRUCT NEW BARRIER CURB AND GUTTER (180mm HT.)
3. RENEW EXISTING 100mm CONCRETE SIDEWALK
4. INSTALL NEW CURB AND GUTTER INLET c/w CATCH BASIN (SD-024) AND CONNECT TO EXISTING 375SRs
5. INSTALL NEW CURB AND GUTTER INLET c/w CATCH BASIN (SD-024) AND CONNECT TO EXISTING LEAD
6. REMOVE EXISTING COVER AND PLACE NEW SOLID COVER (AP-005)
7. REMOVE EXISTING CURB INLET AND CATCH BASIN
8. REMOVE EXISTING CURB INLET AND CATCH BASIN AND ABANDON EXISTING LEAD
9. INSTALL 150mm SUBDRAIN
10. ADJUST EXISTING MANHOLE/CATCH BASIN TO GRADE
11. INSTALL NEW CAST IRON RISER RING
12. ADJUST EXISTING WATER VALVE TO GRADE
13. ADJUST EXISTING CURB STOP
14. CONSTRUCT NEW CURB RAMP AND GUTTER (10mm HT. INTEGRAL)
15. CONSTRUCT NEW LIP CURB AND GUTTER (40mm HT. INTEGRAL)



METRIC
WHOLE NUMBERS INDICATE MILLIMETRES
DECIMALIZED NUMBERS INDICATE METRES

150 mm W.M.	WATERMAIN	150 mm W.M.	HYDRO	X	PROFILE	LOCATION APPROVED
300mm L.D.S.	LAND DRAINAGE SEWER	300mm L.D.S.	M.T.S.	□	NORTH/WEST GUTTER	UNDERGROUND STRUCTURES
250mm W.W.S.	WASTEWATER SEWER	250mm W.W.S.	CONCRETE	○	SOUTH/EAST GUTTER	
	MANHOLE		ASPHALT	◇	N/W PROPERTY LINE	
	CATCH BASIN		PROPERTY LINE	○	S/E PROPERTY LINE	
	CURB INLET		SURVEY BAR			
	JUNCTIONS		ELEVATION (35.750)			
	CULVERT		TREE			
	GAS		SIDEWALK RAMP			
EXISTING	LEGEND - PLAN	PROPOSED	CONCRETE SIDEWALK			
			FENCE			
			LEGEND - PLAN			
			PROPOSED			
			EXISTING			
			LEGEND - PROFILE			
			PROPOSED			
			EXISTING			

LOCATION APPROVED UNDERGROUND STRUCTURES

SUPV. U/G STRUCTURES COMMITTEE DATE

NOTE:
LOCATION OF UNDERGROUND STRUCTURES AS SHOWN ARE BASED ON THE BEST INFORMATION AVAILABLE. BUT NO GUARANTEE IS GIVEN THAT ALL EXISTING UTILITIES ARE SHOWN OR THAT THE GIVEN LOCATIONS ARE EXACT. CONFIRMATION OF EXISTENCE AND EXACT LOCATION OF ALL SERVICES MUST BE OBTAINED FROM THE INDIVIDUAL UTILITIES BEFORE PROCEEDING WITH CONSTRUCTION.

B.M. 37-002
ELEV. 232.704

Bot in Conc. pile to hardpan, 2.2 m S. of N.L. of Ellice Ave. & 0.1 m W. of N.L. of Simcoe St. (Under Handloading track)

NO.	REVISIONS	DATE	BY
0	ISSUED FOR TENDER	05/08/2012	BC
A	ISSUED FOR REVIEW	04/24/2012	BC

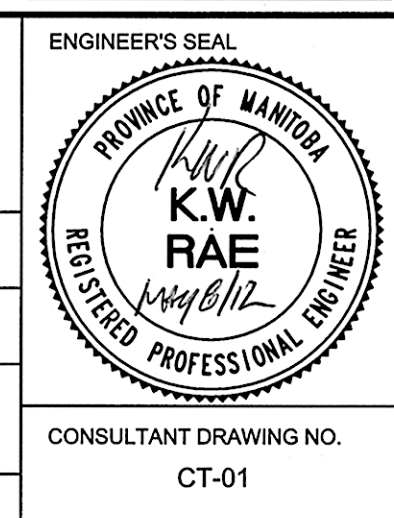
AECOM

DESIGNED BY: SS
CHECKED BY: BC/KWR

DRAWN BY: JA
APPROVED BY:

HOR. SCALE: 1:250
VERTICAL: 1:10

DATE: 2012/04/17
RELEASED FOR CONSTRUCTION BY: [Signature]
DATE: May 8/12



THE CITY OF WINNIPEG
PUBLIC WORKS DEPARTMENT
ENGINEERING DIVISION

2012 LOCAL STREET RENEWAL PROGRAM

VICTOR ST. - ST. MATTHEWS AVE. TO ELLICE AVE.
PAVEMENT REHABILITATION
ST. MATTHEWS AVE. TO STATION 0+210

CITY DRAWING NUMBER
SHEET 01 OF 27

CONSULTANT DRAWING NO. CT-01