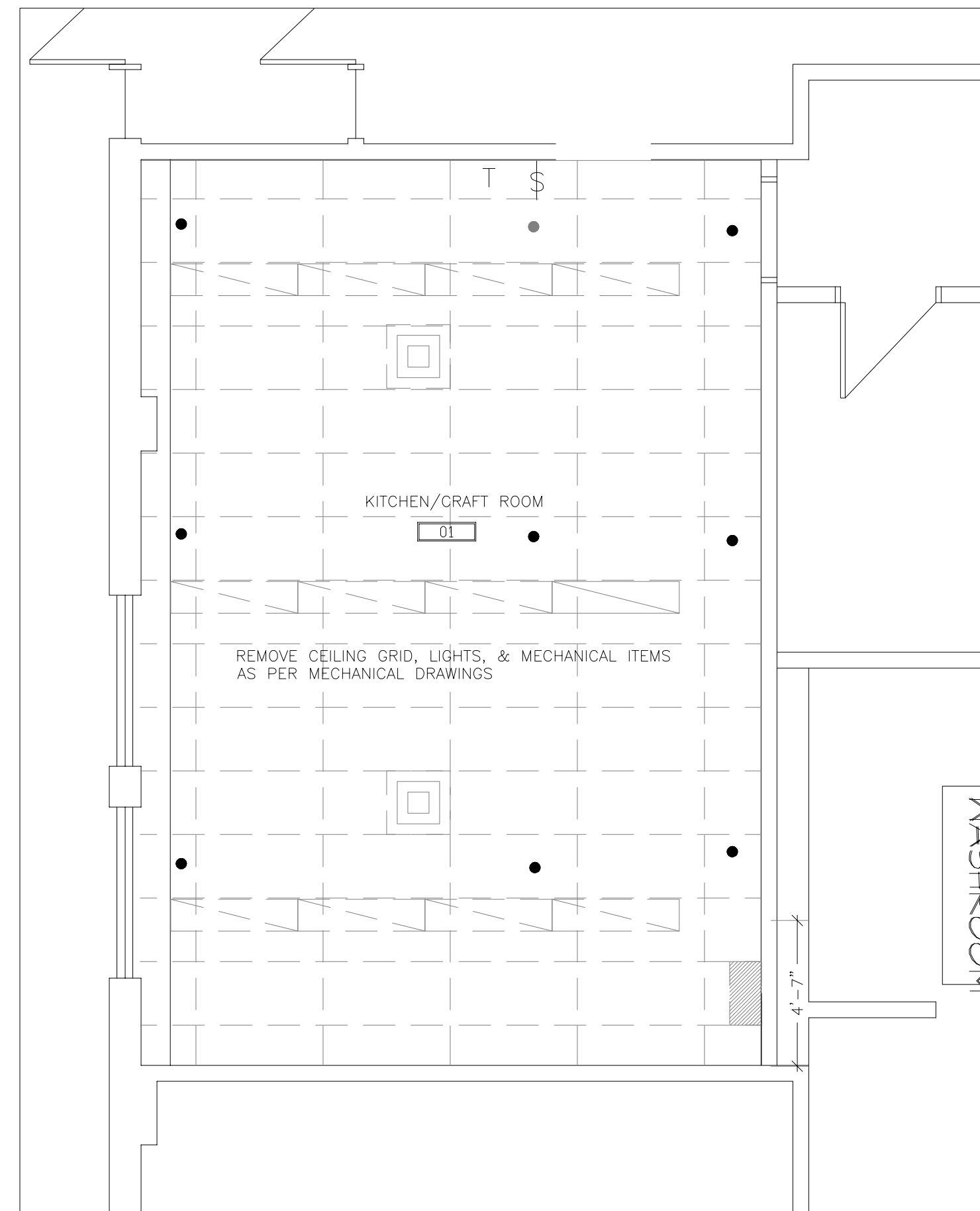
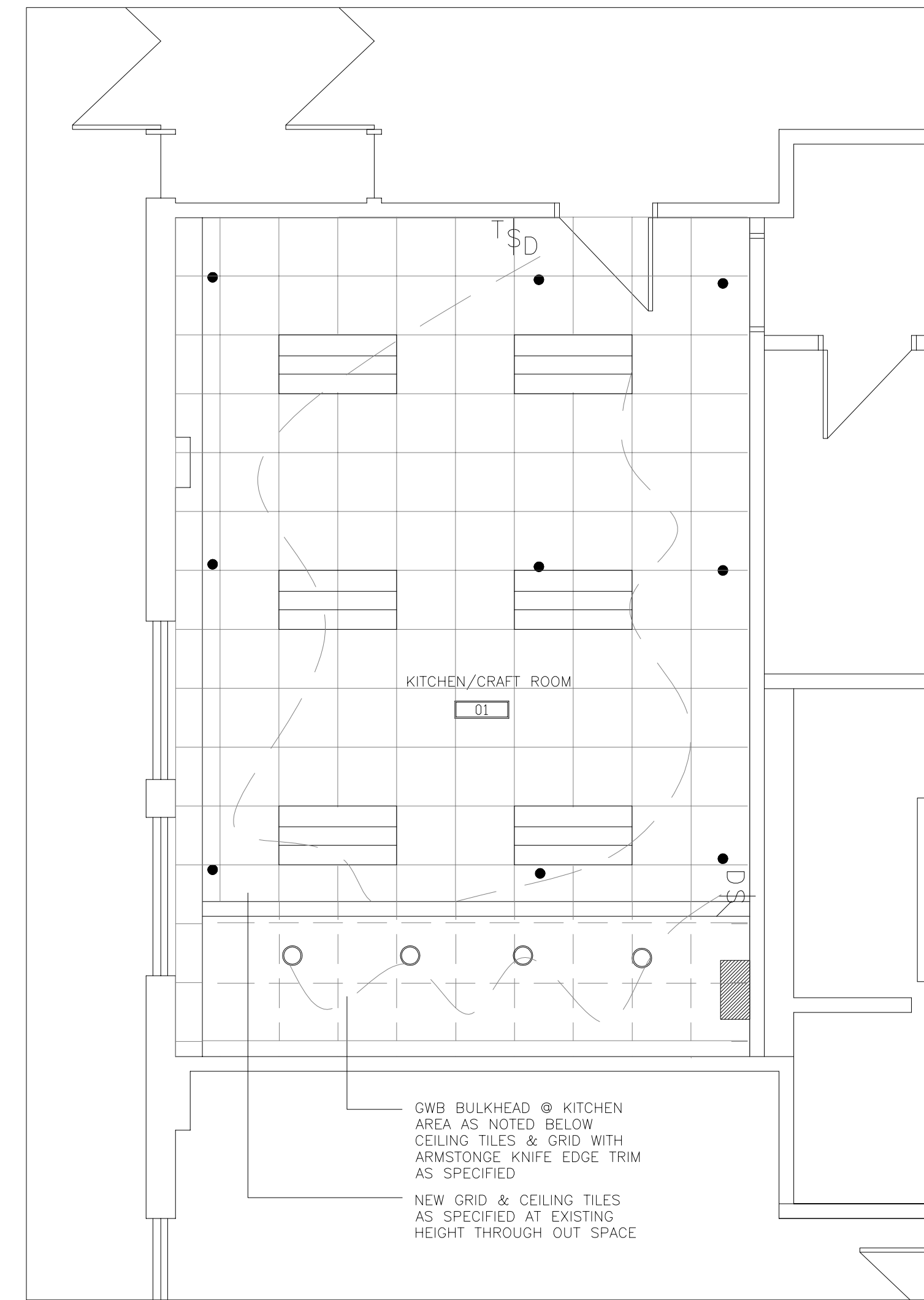


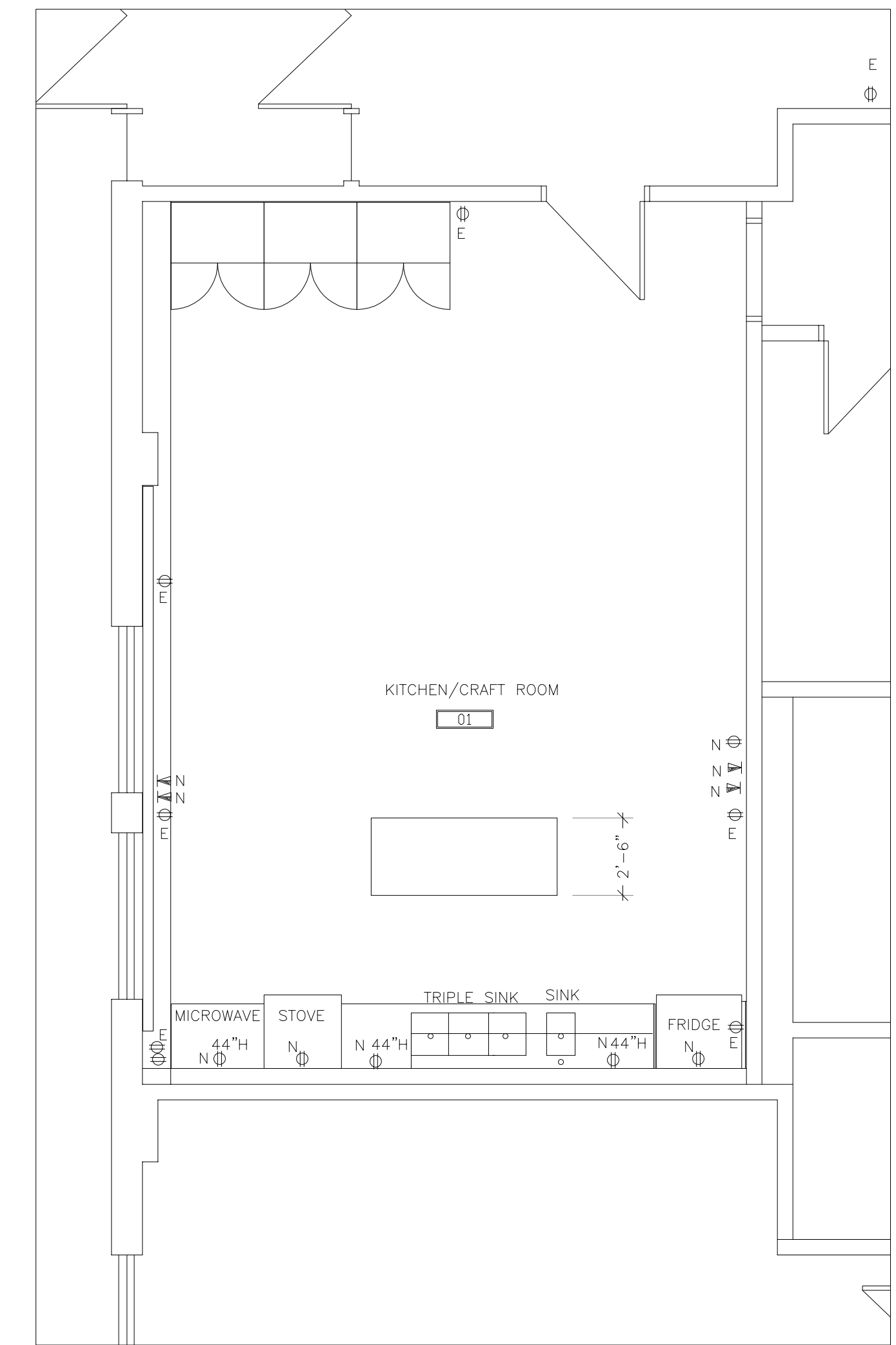
DEMOLITION PLAN



CEILING DEMOLITION PLAN



REFLECTED CEILING PLAN



ELECTRICAL LAYOUT

- LIGHTING LEGEND**
- SWITCH BLACK WITH STAINLESS STEEL COVER PLATES
 - RECESSED FLUORESCENT MFGR: SHINE MODEL: 3324 D1 ST T332 S 1 1 E SIZE: 2' X 4' STANDARD T-BAR LAMPING 3 T8 HOUSING STANDARD 22G. WIRING 1 CCT VOLTAGE 120V, OR 277 VOLTS
 - LIGHTOLIER LED MODEL: CBLD2Dn1/-6L1520DL30KM BASE FINISH CCLW COMFORT CLEAR, WHITE
 - RELOCATE EXISTING DIFFUSERS AS NOTED
 - NEW AIR RETURN AS PER CODE
 - SPRINKLER HEAD
- POWER & SYSTEMS LEGEND**
- DUPEX OUTLET
 - ISOLATED GROUND OUTLET
 - DATE/COMMUNICATION OUTLET
 - N NEW
 - E EXISTING
 - R REMOVE
- T-BAR**
ARMSTRONG PRELUDE XL WHITE ALUMINUM 2' X 2' 1/8" EXPOSED TEE SYSTEM
- ACOUSTIC CEILING TILES**
ARMSTRONG CIRRUS, ANGLED TEGULAR 2' X 2' X 3/4" 1/8" EXPOSED TEE SYSTEM WHITE
- FOR ROOM 01 ABOVE KITCHEN BULKHEAD ONLY**
ARMSTRONG SHORTSPAN DRYWALL FRAMING SYSTEM FOR AREA WITH KNIFE EDGE DETAIL AXIOM STRAIGHT WITH CORNERS AS PER PLAN WHITE ALUMINUM FINISH

- MATERIAL LIST**
- RUBBER FLOORING MFGR: MONDO 3MM, ROLL HARMONI LISSE/SMOOTH HAS 60 EMERALD
 - RUBBER COVE BASE JOHNSONITE WALL BASE 27 MIST 4" KITCHEN & CORRIDORS
 - PLASTIC LAMINATE TYPE 1 ABET LAMINIATI 507 KITCHEN ONLY
 - TYPE 2 WILSONART 4812-60 RADIUM EV KITCHEN ONLY
 - MELAMINE PANOLAM WHITE
- ALL PAINTED AREAS TO HAVE 3 COATS OF PAINT**
- PAINT TYPE 1 BENJAMIN MOORE NO VOC PAINT CC-540 STAMPED CHAGRIN EGGSHELL
 - PAINT TYPE 2 DELETE THIS NUMBER
 - PAINT TYPE 3 ICI LIFEMASTER A1798 BRUSHWOOD EGGSHELL
 - PAINT TYPE 4 BENJAMIN MOORE OC-32 TAPESTRY BEIGE NO VOC PAINT EGGSHELL
 - PAINT TYPE 5 BENJAMIN MOORE NO VOC PAINT OC-37 GLACIER WHITE EGGSHELL
 - PAINT TYPE 6 DULUX TRAVEN GREEN 5066 05/ 063 A1939 EGGSHELL
 - PAINT TYPE 7 DULUX PALE CLOVER A1054 EGGSHELL
 - PAINT TYPE 8 DULUX LIFE MASTER WHITE HID-HIDING RM 98YY 82/ 022 FLAT
- SURFACE RESTORATION OF TERRAZZO FLOORING TO BE PERFORMED BY A SPECIALIST WITH SPECIFIC EQUIPMENT IN ACCORDANCE WITH THE TILE & MARBLE ASSOCIATION OF CANADA**
- HEAVY RE-GRINDING REMOVE A THIN LAYER OF TERRAZZO USING COURSE STONES OR DIAMONDS WITH 24 GRIT. REMOVE SLURRY, RINSE WITH CLEAN WATER, GRIND MORE WITH #60 GRIT STONES REMOVE ALL GRINDING SLURRY & WASH, FILL IN ANY PIN HOLES, WITH COLORED EPOXY RESIN TO MATCH TERRAZZO. WET GRIND WITH 80 OR FINER GRIT STONES UNTIL ALL GROUT HAS BEEN REMOVED FROM SURFACE. WASH & RINSE TERRAZZO USING A NEUTRAL CLEANER & DRY. APPLY APPROPRIATE TERRAZZO SEALER. AREAS WITH CONCRETE FILLER TO BE REMOVED AND REPAIRED TO LOOK AS CLOSE TO FINISHED TERRAZZO FLOOR. SPECIFICATIONS ANTEX WESTERN**
- STAINLESS STEEL COUNTER TOP TO BE 16 GAUGE WITH 304 GRADE #4 FINISH APPLIED TO A 3/4" PLYWOOD CORE SEAMS TO BE INVISIBLE BACKSLASH TO BE 20 GAUGE WITH 1UN PATTERN INTEGRAL WELDED SINK AS PER SIZE IN 18 GAUGE STAINLESS STEEL**
- FORM STYLE THATCH 50% FINISH FRONT SANDSTONE BACK SFX FROST 1/4" GAUGE**

- PLUMBING SPEC'S**
- 10" DEEP 18 GAUGE SINK UNDERCOATED, BASKET STRAINERS, WASTE FITTINGS 3 1/2" SINKS ARE EQUAL SIZE
 - 1 ONLY KITCHEN ROOM INTEGRATED WITH COUNTER TOP
 - DELTA COMMERCIAL FAUCET FOR TRIPLE SINK MODEL: 2603253-S7 STAINLESS STEEL FINISH 8" TUBULAR SWING 1 ONLY KITCHEN
 - DELTA BAR FAUCET TRINSIC SINGLE HANDLE MODEL: 9159-DST STAINLESS STEEL FINISH 1 ONLY, KITCHEN,

NO.	DATE	DESCRIPTION	BY

DRAWN BY PRINTING DATE

The contractor is to verify dimensions and data noted herein with conditions on the site and is held responsible for reporting any discrepancy to the contract administrator for adjustment.

Bid Opportunity No. 300-2012



SYNERGY ARCHITECTURAL INTERIORS
13 Rosewarne, Avenue WINNIPEG, MB Canada R2M 0V8
204 233 9159
malvine@synergyinteriors.com

DATE APRIL 20, 2012 SCALE 1/4" = 1'-0" REVISIONS

DRAWN BY M.G. CHECKED BY M.G.

KITCHEN UPGRADES & RENOVATIONS
FORT ROUGE LEISURE CENTER 625 OSBORNE ST SOUTH
WINNIPEG, MANITOBA
PROJECT SHEET
REFLECTED CEILING PLAN, LIGHTING SPECIFICATIONS
DEMOLITION PLAN, MATERIAL LIST, PLUMBING LIST
ELECTRICAL LAYOUT