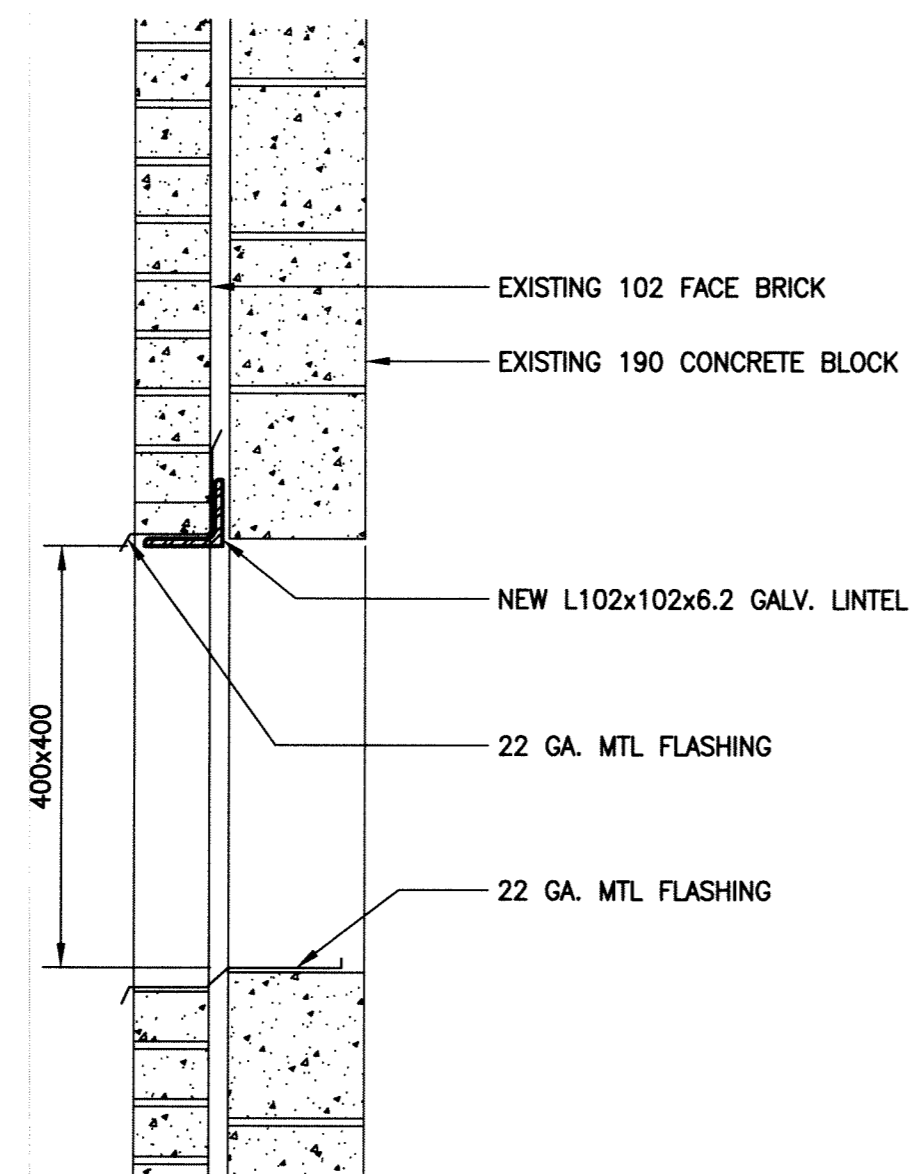
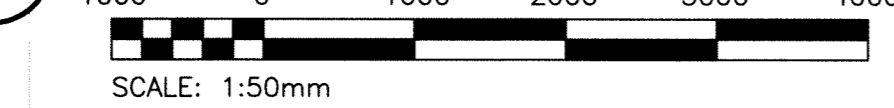


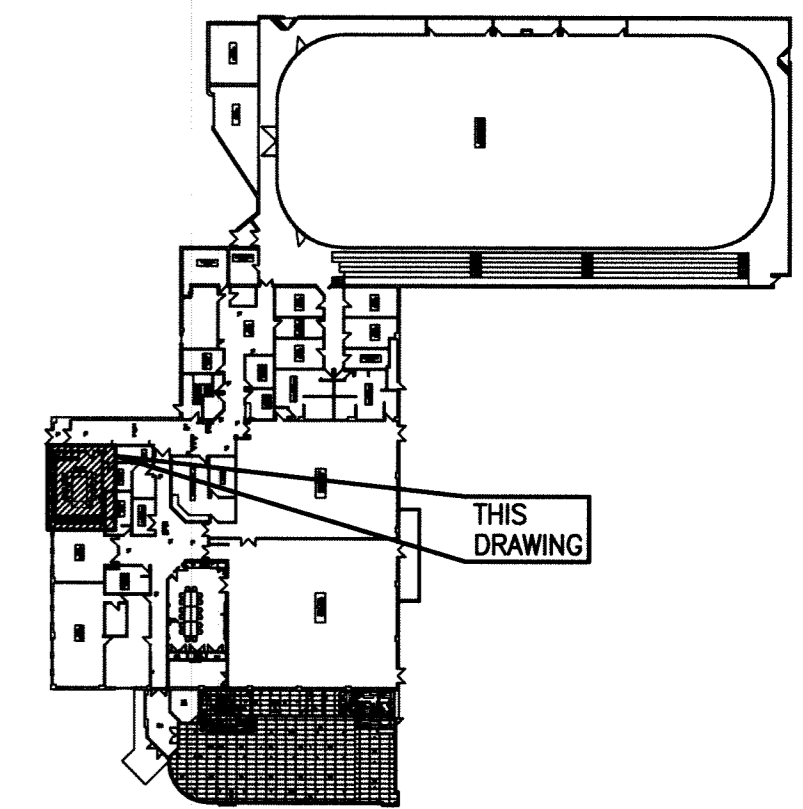
**1 KITCHEN HVAC PLAN - NEW**  
SCALE: 1:50mm



**2 WALL OPENING - SECTION**  
SCALE: N.T.S.

GRILLE SCHEDULE		
GRILLE No.	PRICE DESIGNATION	COMMENTS
G1	300x500/80/F/A/B12	EGG CRATE RETURN GRILLE
G2	250/600x600/SCD/31/3C/B12	4-WAY SUPPLY GRILLE - T-BAR CEILING

LOUVRE SCHEDULE		
LOUVRE No.	SIZE	ACCEPTABLE MATERIAL
L1	400x400	"PRICE" MODEL: DE439



**KEYPLAN**

**GENERAL NOTES:**

- PERFORM WORK IN ACCORDANCE WITH ALL APPLICABLE CODES AND REGULATIONS.
- REVIEW EQUIPMENT LOCATIONS WITH CONTRACT ADMINISTRATOR PRIOR TO INSTALLATION.
- EQUIPMENT LOCATIONS, DUCT, AND PIPE ROUTING INDICATED ON THE DRAWINGS IS APPROXIMATE ONLY. CONFIRM IN THE FIELD. REROUTE DUCTWORK AND PIPING AS REQUIRED TO ELIMINATE FIELD INTERFERENCES. WITH BUILDING STRUCTURES, ELECTRICAL, ETC. CONFIRM CHANGES WITH CONTRACT ADMINISTRATOR. COORDINATE WORK WITH ALL SUBTRADES. WHERE DIMENSIONS ARE INDICATED FOR PIPING, DUCTWORK, DUCT SIZES, EQUIPMENT SIZES, ETC. THESE ARE FOR BIDDING PURPOSES ONLY. THE CONTRACTOR IS RESPONSIBLE TO VERIFY ALL DIMENSIONS IN THE FIELD PRIOR TO ORDERING EQUIPMENT AND COMMENCING INSTALLATION WITHOUT EXTRA CHARGES TO THE PROJECT. THE CONTRACTOR IS RESPONSIBLE TO ENSURE ALL EQUIPMENT, DUCTWORK, AND PIPING FITS IN THE SPACE AVAILABLE AND TO MAINTAIN THE GENERAL DESIGN INTENT FOR THE SYSTEMS.
- CONFORM TO SMACNA STANDARDS FOR SUPPLY AND INSTALLATION OF DUCTWORK.
- MODIFY SPRINKLER SYSTEM TO SUIT THE NEW CEILING. SPRINKLER MODIFICATIONS TO BE DESIGNED BY A QUALIFIED SPRINKLER ENGINEER TO MEET NFPA 13 AND ALL REQUIREMENTS OF THE AUTHORITY HAVING JURISDICTION. PROVIDE SPRINKLER SHOP DRAWING FOR REVIEW OF THE CONTRACT ADMINISTRATOR.

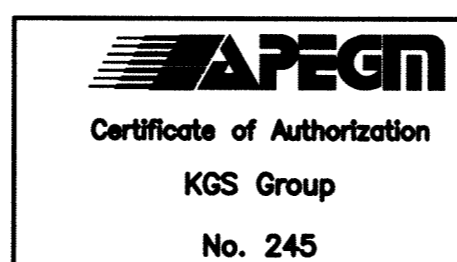
**KEYNOTES:**

- INSTALL SUPPLY AIR GRILLES AS SHOWN ON THIS DRAWING. SUPPLY AND INSTALL NEW DUCTWORK TO EXISTING BRANCH AS SHOWN (TYP.).
- SUPPLY AND INSTALL NEW RETURN GRILLES AS SHOWN ON THIS DRAWING. PROVIDE NEW TRANSITION AND CONNECT TO EXISTING RETURN DUCTWORK IN MEZZANINE ABOVE. (TYP.)
- SUPPLY AND INSTALL NEW RANGE HOOD (RH-1) ABOVE NEW STOVE IN KITCHEN AS SHOWN. PROVIDE NEW EXHAUST DUCTWORK AND LOUVRE IN CEILING SPACE. EXHAUST LOUVRE TO PENETRATE WALL BELOW EXISTING CANOPY.
- REHEAT COIL (RHC-3-5) AND VARIABLE AIR VOLUME (VAV-3-5) BY OTHERS (N.I.C.).

**LEGEND:**

- NEW EQUIPMENT/DUCTWORK
- EXISTING EQUIPMENT/DUCTWORK
- ① THERMOSTAT
- ⓑ BALANCE DAMPER
- G1 GRILLE NO.
- 200# NECK SIZE (mm)
- 180 L/s AIR FLOW
- Flexible Ductwork
- Externally Insulated Duct
- ⓓ BACKDRAFT DAMPER

File Name: P:\Projects\2012\12-2326-001\Doc\Control\toBalsaued\DWG\12-2326-001\_M04-Rev 1.dwg - Tab: M04 Plotted By: DDeroche 12/05/10 [Thu 10:26am]



B.M.			
ELEV.			
DESIGNED BY	TJC	CHECKED BY	
DRAWN BY	TJC	APPROVED BY	
HOR. SCALE:	AS SHOWN	RELEASED FOR CONSTRUCTION:	
VERTICAL:			
NO.	REVISIONS	DATE	BY

**KGS GROUP**  
CONSULTING ENGINEERS

DESIGNED BY: TJC  
DRAWN BY: TJC  
HOR. SCALE: AS SHOWN  
VERTICAL: .

CHECKED BY: [Signature]  
APPROVED BY: [Signature]  
RELEASED FOR CONSTRUCTION: [Signature]

ENGINEER'S SEAL

CONSULTANT DRAWING NO. M04

**THE CITY OF WINNIPEG**  
PLANNING, PROPERTY AND DEVELOPMENT DEPARTMENT

PROJECT TITLE: KITCHEN UPGRADES AND RENOVATIONS FOR FORT ROUGE LEISURE CENTRE - 625 OSBORNE STREET

HVAC NEW

SHEET 001 OF 001  
COMPUTER FILE NAME: 12-2326-001\_M04  
CITY DRAWING NUMBER