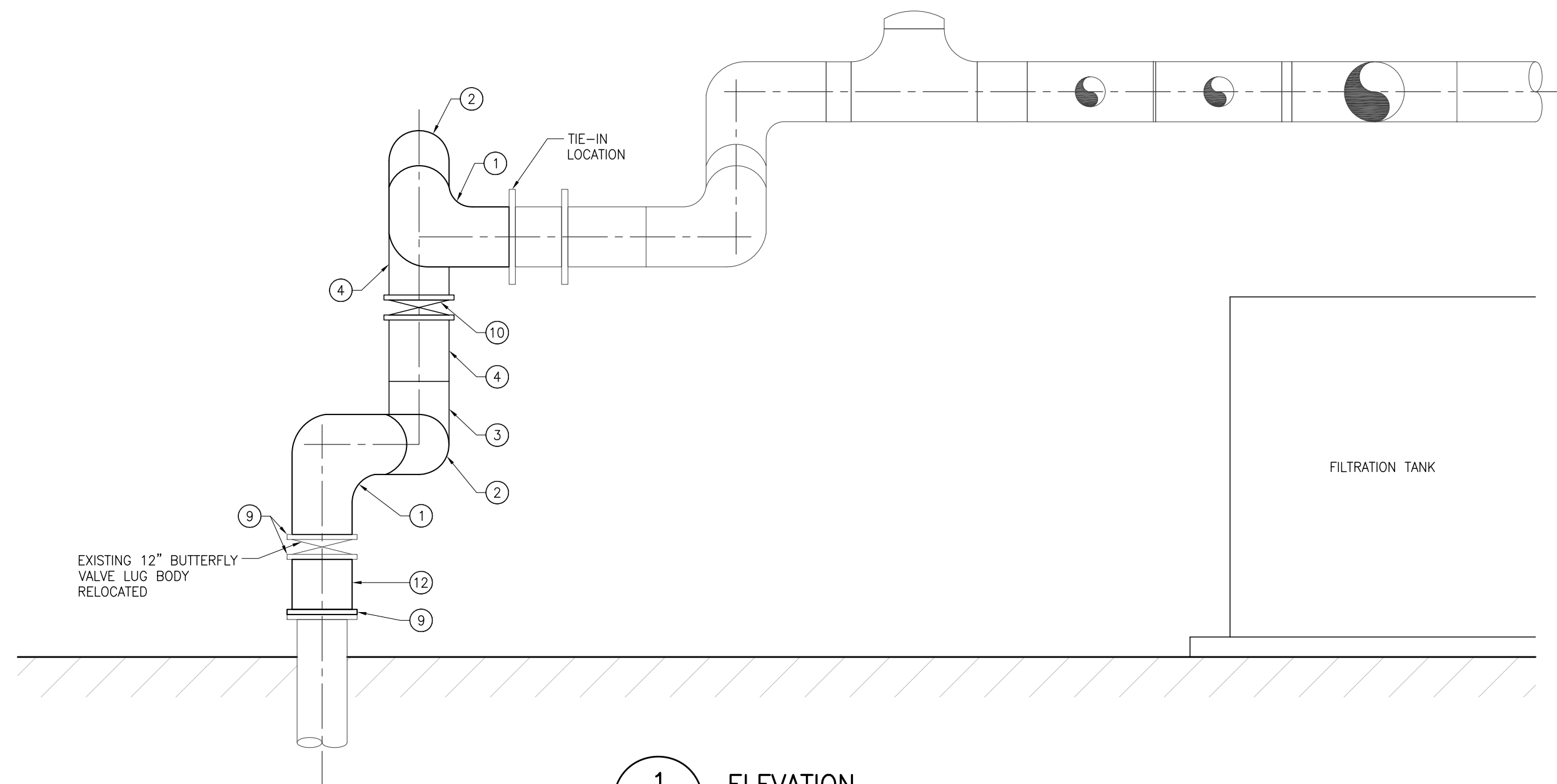


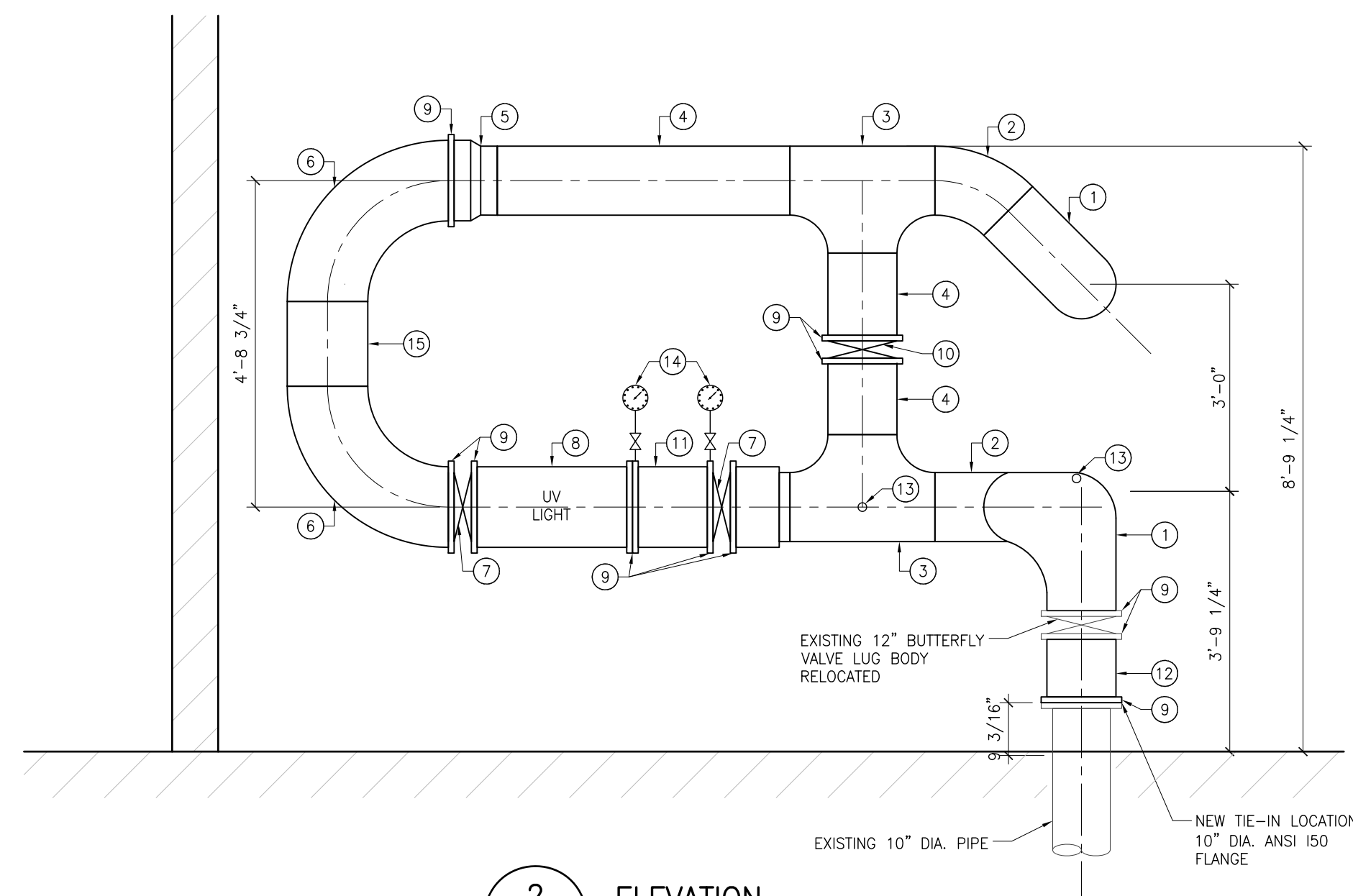
A
NEW FLOOR PLAN
MECHANICAL ROOM EAST
M101 1/4" = 1' - 0"

CONSTRUCTION KEYNOTES:

- 1 APPROXIMATE TIE-IN LOCATION FOR 1 1/2" EXISTING LINE TO CHLORINE SKID.
- 2 PROVIDE NEW 1/2" DOW, 1/2" DHW FROM EXISTING TIE-IN TO EYE WASH MIXING VALVE. CONNECT PIPING FROM MIXING VALVE TO EYE WASH.
- 3 MODIFY LOCATION OF CO₂ EQUIPMENT TO ACCOMMODATE UV CONTROL PANEL AND RELOCATED EYE WASH AND CHLORINE SKID. TIE-IN CO₂ TUBING.
- 4 MOUNT MIXING VALVE FOR EYE WASH BELOW UV CONTROL PANEL. PROVIDE NEW ISOLATION VALVES. MIXING VALVE RELOCATED.
- 5 PROVIDE ADDITIONAL PWF 3/4" PLYWOOD BACKBOARD ALONG ENTIRE WALL, FROM DOORS TO WORK BENCH.
- 6 PROVIDE NEW 1 1/2" CONNECTION TO 12" MAIN FOR CHLORINE INJECTION.
- 7 TIE INTO EXISTING 1 1/2" CHLORINE SUPPLY. EXTEND PIPING TO RELOCATED CHLORINE SKID.



1
ELEVATION
M101 1/2" = 1' - 0"



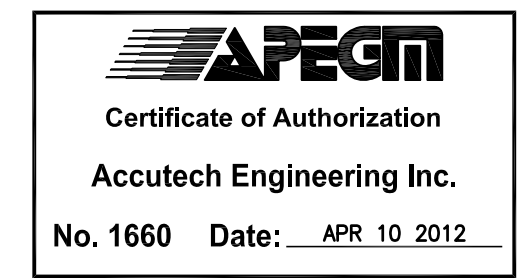
2
ELEVATION
M101 1/2" = 1' - 0"

ELEVATIONS KEYNOTES:

- 1 12"x90" SCH 80 PVC ELBOW SOCKET x ANSI 150 FLANGE.
- 2 12"x45" SCH 80 PVC ELBOW SOCKET x SOCKET.
- 3 12" TEE, SCH 80 PVC.
- 4 12" SCH 80 PVC PIPE.
- 5 12"x14" BUSHING, SCH 80 PVC.
- 6 14"x90" ELBOW SCH 80 PVC.
- 7 14" ANSI 150 LUG BODY S/S BUTTERFLY VALVE, BRAY SERIES 41 HIGH PERFORMANCE, TRIM 066, REINFORCED TEFLON SEAT, MANUAL GEAR OPERATOR. EXTEND OPERATOR SO THAT HANDWHEEL AT 48" ABOVE FLOOR.
- 8 ETS UV LIGHT, 14" ANSI 150 FLANGED MODEL ECF-433-14.
- 9 FLANGED CONNECTION. USE TYPE 316 S/S FASTENERS AT EACH FLANGE SET. C/W GARLOCK 3545 GASKET.
- 10 12" ANSI 150 LUG BODY S/S BUTTERFLY VALVE, BRAY SERIES 41 HIGH PERFORMANCE, TRIM 066, REINFORCED TEFLON SEAT, MANUAL GEAR OPERATOR.
- 11 UV STRAINER BASKET, IN SPOOL PIECE OF 14"xSCH 10 S/S PIPE TYPE 316. C/W ANSI 150 S/S FLANGES. DRILL AND TAP FLANGES FOR PRESSURE GAUGE CONNECTION.
- 12 12" SCH 80 PVC PIPE, C/W 12"x10" SCH 80 PVC BUSHING AND 10" SCH 80 PVC PIPE. FLANGED CONNECTIONS AS NOTED.
- 13 1 1/2" SCH 80 PVC BALL VALVE SOCKET x SOCKET. TWO LOCATIONS: ONE FOR CHLORINE WATER RETURN, ONE FOR CO₂ INJECTION. PROVIDE TRANSITIONS AS REQUIRED.
- 14 1/4" S/S PIPE NIPPLE C/W ISOLATION BALL VALVE AND COMPOUND PRESSURE GAUGE.
- 15 14" SCH 80 PVC PIPE.

GENERAL NOTES:

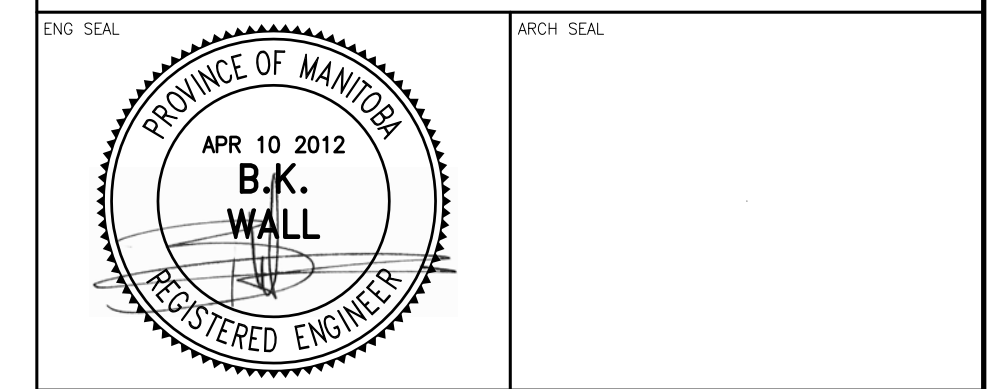
1. CONTRACTOR TO CONFIRM ALL COMPONENTS WILL FIT PRIOR TO ORDERING AND ASSEMBLING.
2. PROVIDE PIPING AND EQUIPMENT SUPPORT AS REQUIRED.
3. SCH 105 TYPE 316 S/S PIPE AND FITTINGS C/W BUTT WELD CONNECTIONS MAY BE USED IN PLACE OF SCH 80 PVC PIPE AND FITTINGS. CONSIDER INSTALLED COST AND SPACE AVAILABLE.



7				
6				
5				
4				
3				
2				
1				
0	ISSUED FOR TENDER	VCV	BKW	APR 10 2012
REV	DESCRIPTION	DWN	APP	REV DATE



605-287 Broadway, Winnipeg, Manitoba Canada R3C 0R9
Phone 204.944.1555 Fax 204.944.1444
www.accutech.ca



**CITY OF WINNIPEG
PAN AM POOL UV PIPING**

**MECHANICAL ROOM WEST
NEW FLOOR PLAN
AND ELEVATIONS**

DRAWN BY VCV	CHECKED BY BKW	DATE APR 10 2012	SHEET NO M101
DESIGNED BY BKW	CHECKED BY KRD	SCALE AS NOTED	REVISION NO 0