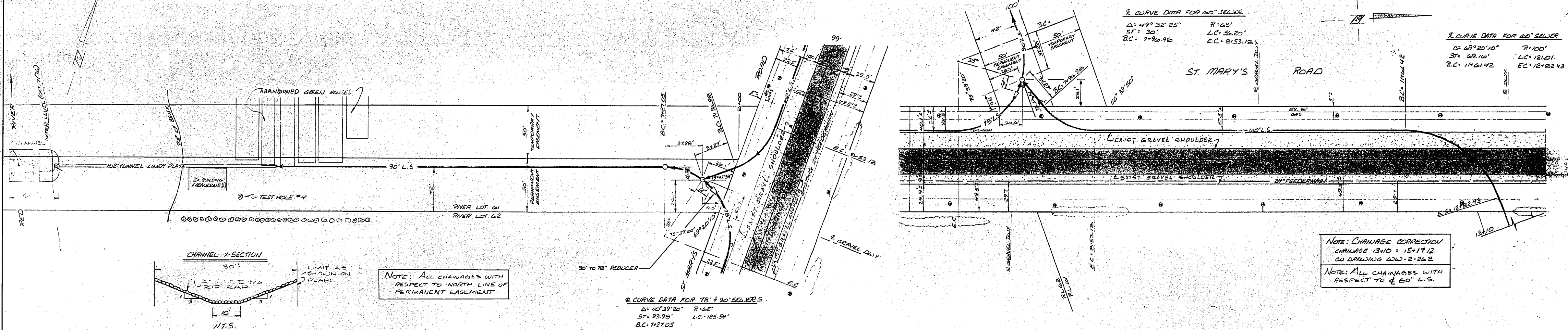
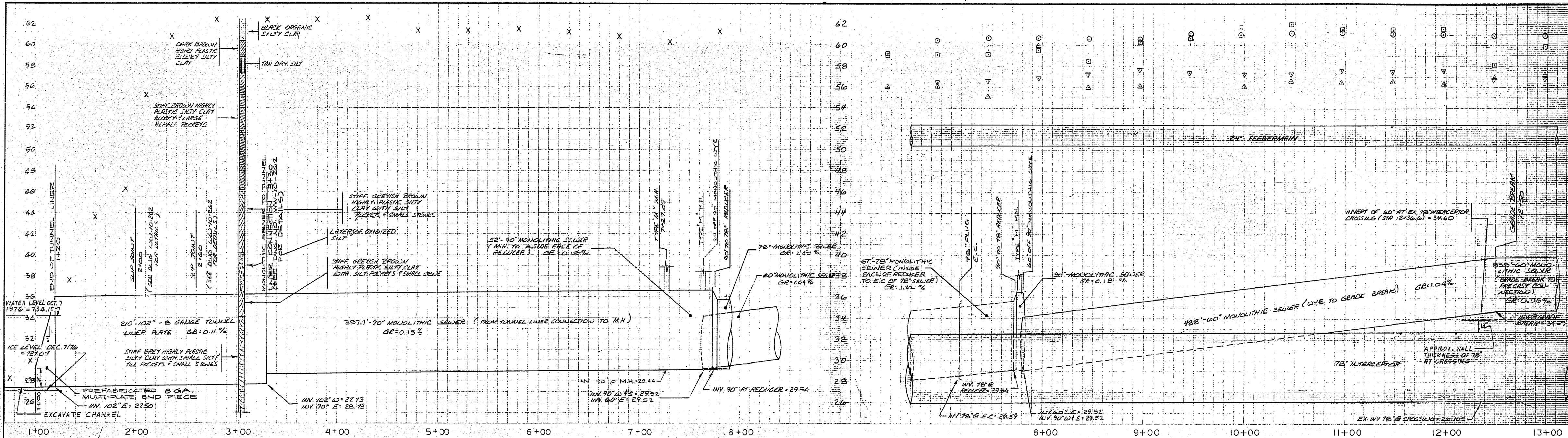


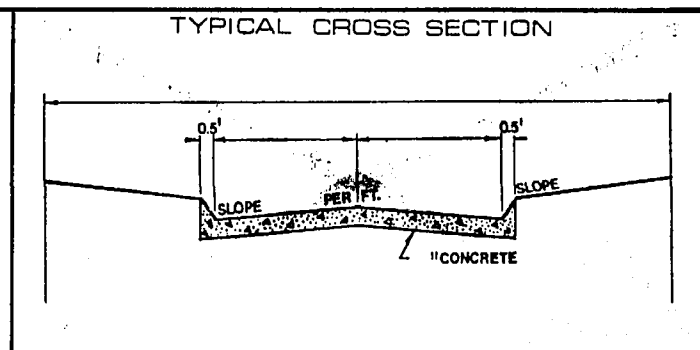
APPENDIX A – HISTORICAL RECORD DRAWINGS



- NOTES**
- STANDPIPES REQUIRED BETWEEN STA. AND STA.
 - ALL MANHOLES TO BE TYPE "A-1" EXCEPT AS NOTED.
 - ALL SEWER HOUSE SERVICE TO BE INSTALLED BELOW STREET WATERMAIN EXCEPT AS NOTED.
 - ALL SEWER HOUSE SERVICES TO BE A MINIMUM OF BURY AT THE PROPERTY LINE EXCEPT AS NOTED.
 - ALL SEWERS TO BE EXTRA STRENGTH CONCRETE PIPE EXCEPT AS NOTED.
 - STREET INTERSECTION FILLETS RADIUS LANE FILLETS
 - LOCATION AND DEPTH OF EXISTING UNDERGROUND SERVICES AS SHOWN ON DRAWINGS IS APPROXIMATE ONLY. CONTRACTOR SHALL NOTIFY THE RESPECTIVE UTILITIES BEFORE BEGINNING EXCAVATION.
 - BENCH MARK: "M" IN M-CAVITY, HYDRANT AT NO. 11 VISTA AVE. ELEV = 65.01

LEGEND

PLAN	PROFILE
WASTEWATER SEWER	EXIST. NORTH OR EAST
CULVERT	EXIST. SOUTH OR WEST
EXIST. GAS LINE	EXIST. NORTH OR EAST DITCH
EXIST. M.T.S. DUCT	EXIST. SOUTH OR WEST DITCH
	EXIST. C. OF SEWER
	GUTTER GRADE
	C. OF ROAD
	SIDEWALK GRADE
	DITCH GRADE



NO.	REVISIONS	DATE	BY
4	REVISED TO AS BUILT	MAY 15/78	JM
3	REV. TO AS BUILT	MAY 15/78	JM
2	ADDED 102\"/>		
1	REDRAWN FOR TENDER	FEB. 17/77	RM

THE CITY OF WINNIPEG
 WATERWORKS WASTE & DISPOSAL DIVISION
 LOCATION AND GRADE OF SEWER ON
ST. MARY'S RD. & EASEMENT

TEMPLETON ENGINEERING COMPANY
 PROFESSIONAL ENGINEERS

WINNIPEG
 DRAWN BY: K.B. CHECKED BY: J.A. APPROVED BY: R.I.
 DATE: DEC. 3, 1976 SCALE: HOR. 1" = 40' VERT. 1" = 4' PLAN NO.: WW-1-262