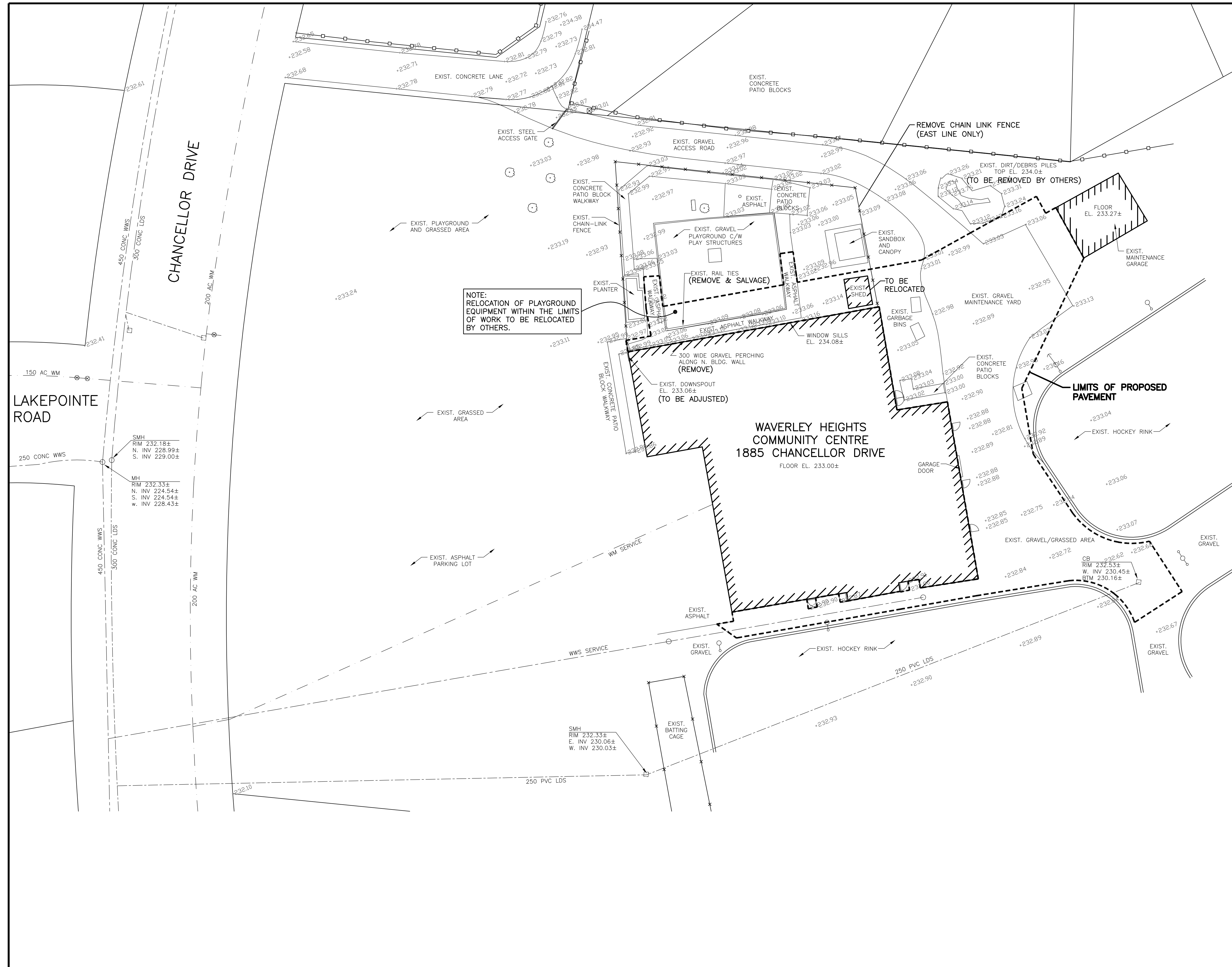


- GENERAL CONSTRUCTION NOTES:**
- ALL PRODUCTS INCORPORATED IN THE WORK SHALL CONFORM TO THE CITY WINNIPEG "STANDARD CONSTRUCTION SPECIFICATIONS" AND BE REGISTERED IN THE CITY OF WINNIPEG LISTING OF APPROVED PRODUCTS OR AS SPECIFIED ON THIS DRAWING. ALL CONSTRUCTION SHALL CONFORM TO THE CITY OF WINNIPEG "STANDARD CONSTRUCTION SPECIFICATIONS", LATEST EDITION.
 - IT IS THE RESPONSIBILITY OF THE CONTRACTOR TO VERIFY THE LOCATIONS OF ALL UTILITIES, PIPES, SURVEY MARKERS, OR STRUCTURES, AND TO NOTIFY ALL RELEVANT UTILITIES PRIOR TO COMMENCEMENT OF CONSTRUCTION. THE CONTRACTOR SHALL NOTIFY THE CONTRACT ADMINISTRATOR OF ANY ERROR OR OMISSION PRIOR TO CONSTRUCTION.
 - IN ACCORDANCE WITH THE CITY OF WINNIPEG SURVEY INFRASTRUCTURE PROTECTION PROGRAM, THE CONTRACTOR SHALL NOTIFY THE GEOMATICS BRANCH A MINIMUM 3 DAYS PRIOR TO START OF CONSTRUCTION.
 - DESCRIPTION OF PROPERTY LIMITS, AND EXISTING AND/OR PROPOSED FEATURES RELATIVE TO THESE LIMITS AS SHOWN ON THIS DRAWING DO NOT REPRESENT A LEGAL SURVEY. GENIVAR MAKES NO REPRESENTATION OR GUARANTEE THAT THE PROPERTY LIMIT INFORMATION IS ACCURATE. GENIVAR ACCEPTS NO RESPONSIBILITY FOR DAMAGES, IF ANY, SUFFERED BY ANY THIRD PARTY AS A RESULT OF DECISIONS OR ACTIONS BASED ON THIS DRAWING.
 - ALL AREAS AFFECTED BY CONSTRUCTION TO BE RESTORED TO THE ORIGINAL CONDITION OR BETTER UNLESS NOTED OTHERWISE ON THE DRAWING. ALL REGRADED/DISTURBED SOD AREAS TO RECEIVE TOPSOIL AND SOD UNLESS NOTED OTHERWISE.

- DEMOLITION/REMOVAL NOTES:**
- REMOVE ALL ASPHALT PAVEMENT, CONCRETE PAVEMENT, GRAVEL AND GRASSED AREAS WITHIN THE SHOWN LIMITS OF PROPOSED ASPHALT PAVEMENT, AS REQUIRED FOR NEW CONSTRUCTION. CONFIRM LIMITS OF REMOVAL WITH CONTRACT ADMINISTRATOR PRIOR TO COMMENCEMENT OF WORK.
 - REMOVE AND SALVAGE EXISTING CHAIN LINK FENCING, RAIL TIES, BOLLARDS, POSTS AND SIGNS WITHIN THE SHOWN LIMITS OF PROPOSED ASPHALT PAVEMENT, OR WHERE INDICATED ON THE DRAWING. CONFIRM LIMITS OF REMOVAL WITH CONTRACT ADMINISTRATOR PRIOR TO COMMENCEMENT OF WORK. ALL SALVAGED COMPONENTS SHALL BE SORTED TO THE SATISFACTION OF THE CONTRACT ADMINISTRATOR AND DELIVERED TO THE FACILITY MAINTENANCE SUPERVISOR.
 - TEMPORARILY RELOCATE ALL GARBAGE BINS, BIKE RACKS, PLANTERS, DONATION BINS AND RECYCLING BINS TO ON-SITE LOCATIONS DESIGNATED BY THE FACILITY MAINTENANCE SUPERVISOR OR CONTRACT ADMINISTRATOR.



150 mm WM	WATERMAIN	150 mm WM		GAS				
⊕	HYDRANT	⊕		HYDRO				
⊗	VALVE	⊗		M.T.S.				
300 mm LDS	LAND DRAINAGE SEWER	300 mm LDS		PEDESTAL				
250 mm CS	WASTE WATER SEWER	250 mm CS		GROUND ELEVATION	230.00			
○	MANHOLE	●		PAVEMENT ELEVATION	(230.000)			
□	CATCH BASIN	■		PROPERTY LINE				
△	CURB INLET	▲		SURVEY BAR				
▽	SIGN	▼		CURB STOP				
○-○	LAMP STANDARD	●-●		TESTHOLE				
•	UTILITY POLE	•						
EXISTING	LEGEND - PLAN	PROPOSED	EXISTING	LEGEND - PLAN	PROPOSED	EXISTING	LEGEND - PLAN	PROPOSED

LOCATION APPROVED
UNDERGROUND STRUCTURES

SUPV. U/G STRUCTURES COMMITTEE DATE

NOTE:
LOCATION OF UNDERGROUND STRUCTURES AS SHOWN ARE BASED ON THE BEST INFORMATION AVAILABLE BUT NO GUARANTEE IS GIVEN THAT ALL EXISTING UTILITIES ARE SHOWN OR THAT THE GIVEN LOCATIONS ARE EXACT. CONFIRMATION OF EXISTENCE AND EXACT LOCATION OF ALL SERVICES MUST BE OBTAINED FROM THE INDIVIDUAL UTILITIES BEFORE PROCEEDING WITH CONSTRUCTION.

C.W.B.M. 76-037..... 231.710m
84R645 - N.W. COR. OF CHANCELLOR DR. & S. LEG OF SYRACUSE CRES., TBLT. ON TOP OF 0.05m DIA. X 2.4m IRON PIPE, 4.7m S. OF N.L. OF S. LEG OF SYRACUSE CRES. & 1.4m W. OF W.L. OF CHANCELLOR DR.

1	ISSUED FOR TENDER	12/01/23	R.C.
0	ISSUED FOR REVIEW	12/01/11	R.C.
NO.	REVISIONS	DATE	BY

GENIVAR
10 PRAIRIE WAY WINNIPEG, MANITOBA R2J 3J8
PH: (204)-477-6650 FAX: (204)-474-2864

ENGINEER'S SEAL
PROVINCE OF MANITOBA
R. CABIGTING
Member
24617
REGISTERED PROFESSIONAL ENGINEER

DESIGNED BY	R.C.	CHECKED BY	R.C./B.D.E.
DRAWN BY	R.C.	APPROVED BY	B.D.E.
HOR. SCALE:	1:250 (A1)	RELEASED FOR CONSTRUCTION	
VERT. SCALE:		DATE	

CONSULTANT PROJECT NO. 111-18846-00

METRIC
WHOLE NUMBERS INDICATE MILLIMETRES
DECIMALIZED NUMBERS INDICATE METRES

APEGM
Certificate of Authorization
GENIVAR Inc.
No. 5079 Date: January 23, 2012

THE CITY OF WINNIPEG
PLANNING, PROPERTY & DEVELOPMENT

Waverley Heights Community Center
LAND DRAINAGE IMPROVEMENTS PROJECT

EXISTING/DEMOLITION SITE PLAN

CITY DRAWING NO.	33-2012-C01
SHEET	1 OF 2
REV.	1