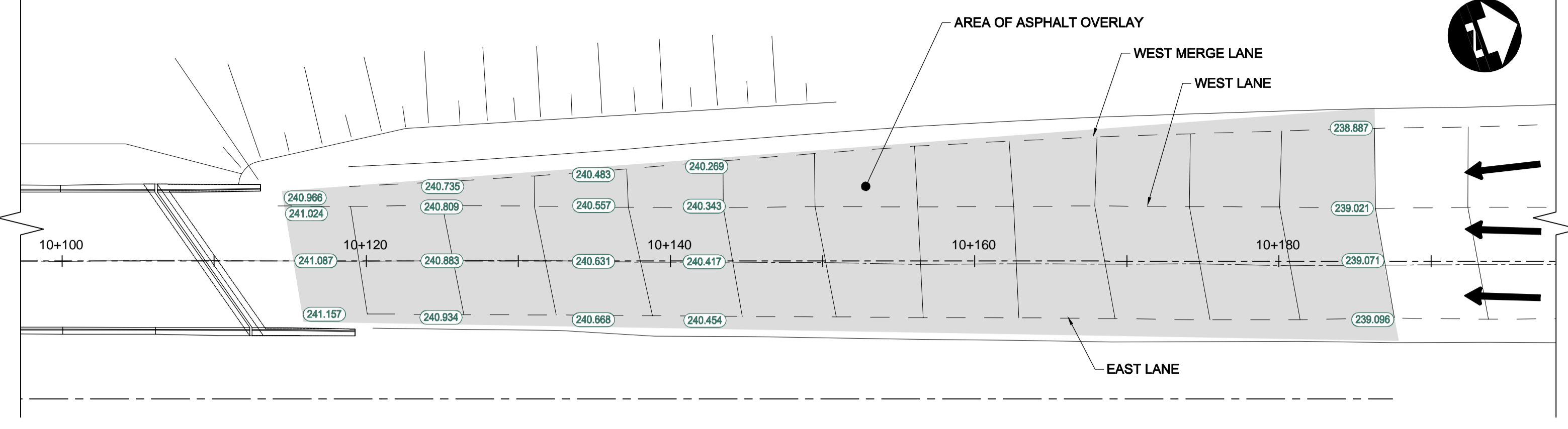
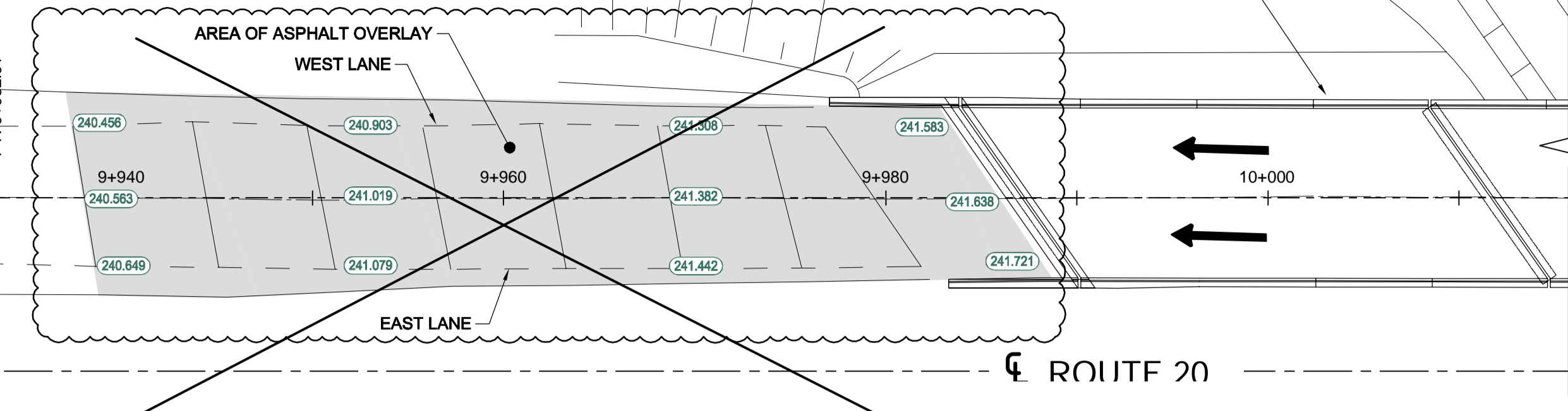


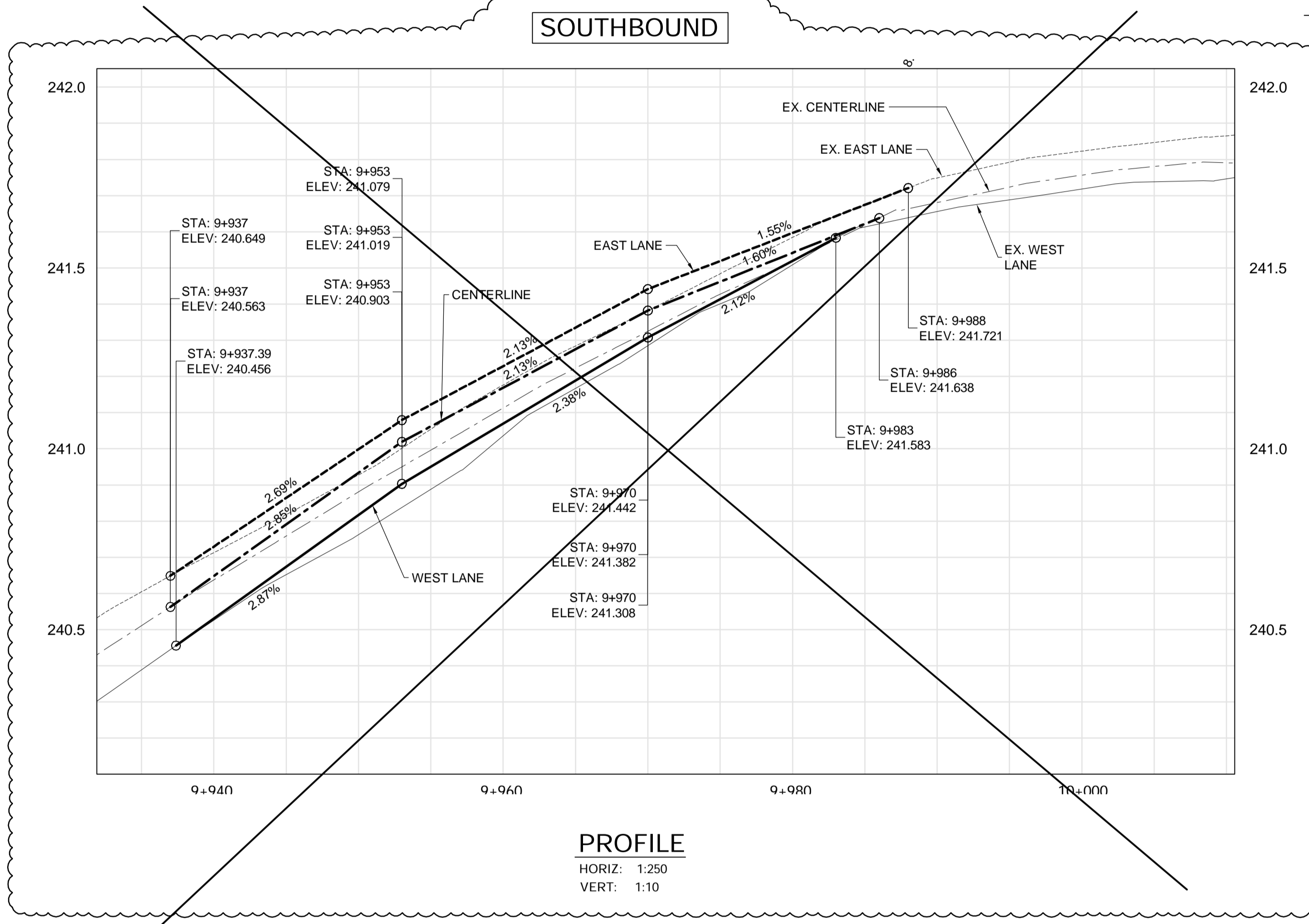
2 ASPHALT OVERLAY COMPLETED BY OTHERS, NOT IN CONTRACT.
 CONTRACTOR MUST TAKE CARE NOT TO DAMAGE EXISTING ASPHALT.
 ANY DAMAGE MUST BE REPAIRED TO THE SATISFACTION OF THE CONTRACT ADMINISTRATOR.

CONCORDIA TWIN OVERPASS - SOUTHBOUND STRUCTURE



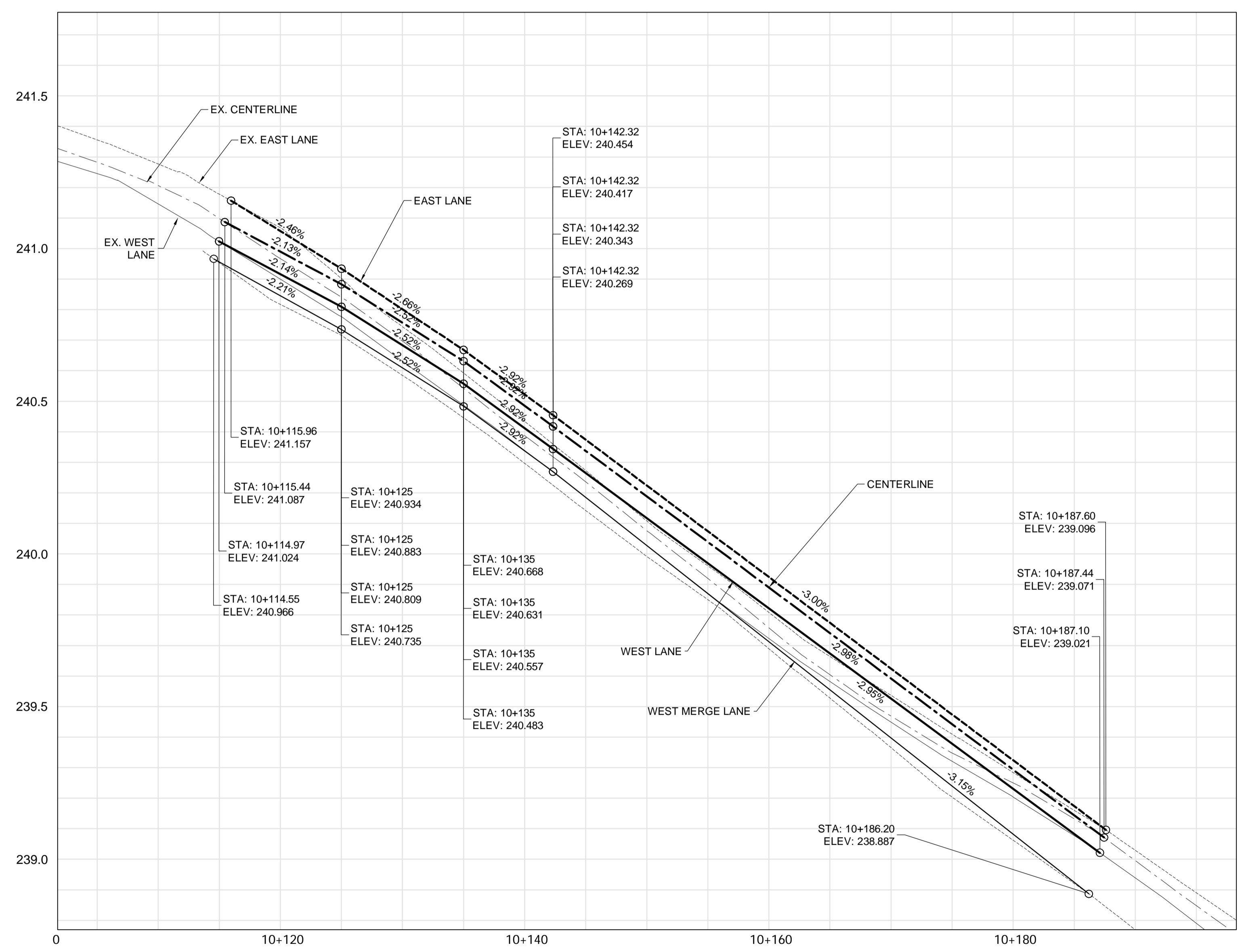
PLAN
 SCALE 1:250

SOUTHBOUND



SOUTHBOUND

PROFILE
 HORIZ: 1:250
 VERT: 1:10



PROFILE
 HORIZ: 1:250
 VERT: 1:10

- NOTES:
- MILL 50mm DEPTH ASPHALT HEADERS.
 - MILL WHERE EXISTING ASPHALT IS HIGH TO THE GRADES SET BY THE CONTRACT ADMINISTRATOR, IN ORDER TO ACHIEVE MINIMUM OF 50mm OF NEW ASPHALT.
 - CONSTRUCT TEMPORARY ASPHALT RAMPS WHERE NECESSARY TO ENSURE SMOOTH TRANSITIONS FOR TRAFFIC.
 - DO NOT MILL OR CAUSE DAMAGE TO THE STRUCTURAL CONCRETE APPROACH SLABS OR CONCRETE ROADWAY.
 - CONDUCT CONCRETE JOINT REPAIRS IF NECESSARY AS MARKED OUT BY THE CONTRACT ADMINISTRATOR, AFTER MILLING.
 - PLACE NEW ASPHALT TO THE GRADES SET BY THE CONTRACT ADMINISTRATOR.
- TRAFFIC CONTROL:
- CONTRACTOR SHALL NOTIFY THE CONTRACT ADMINISTRATOR AND THE CITY OF WINNIPEG CUSTOMER SERVICE AT 986-5640, ONE DAY IN ADVANCE OF ANY TRAFFIC CLOSURES.
 - MAINTAIN ONE LANE OF TRAFFIC IN EACH DIRECTION AT ALL TIMES.
 - CONTRACTOR SHALL MAINTAIN PERMANENT, SAFE ACCESS TO THE NORTHBOUND OFF RAMP (TO CONCORDIA AVE), AND PERMANENT, SAFE ACCESS FROM THE SOUTHBOUND MERGE LANE (FROM CONCORDIA AVE) THROUGHOUT THE PROJECT.

APEGM
 Certificate of Authorization
Dillon Consulting Limited (MB)
 No. 1789 Date: **May 8, 2012**

DRAWING REDUCED NOT TO SCALE

B.M.1 ELEV. 242.564 (LOCAL SURVEY)	BM CAP N/B BRIDGE, S.E. BARRIER AT EXP. JT.	DESIGNED BY MRD
B.M.2 ELEV. 233.125 (LOCAL SURVEY)	S.E. BOLT ON PED. S. OF R/R W. OF S/B BRIDGE	DRAWN BY MRD
		CHECKED BY TJP
		APPROVED BY -
2	ADDENDUM 1	05/15/12 JLD
1	ISSUED FOR TENDER	05/08/12 JGW
0	ISSUED FOR REVIEW	05/01/12 JGW
NO.	REVISIONS	DATE BY DATE
		MAY 8, 2012

DILLON CONSULTING

ENGINEER'S SEAL
 PROVINCE OF MANITOBA
M.R. DOUCET
 Member 22306
 REGISTERED PROFESSIONAL ENGINEER

THE CITY OF WINNIPEG
 PUBLIC WORKS DEPARTMENT

2012 BRIDGE MAINTENANCE PROGRAM
 ROUTE 20 KEEWATIN OVERPASS

PLAN & PROFILE
 SOUTHBOUND LANES

CITY DRAWING NUMBER
B123-12-15-R2
 SHEET 15 OF 15

BID OPP. NO.
 363-2012

CONSULTANT PROJECT NO.
 12-5995