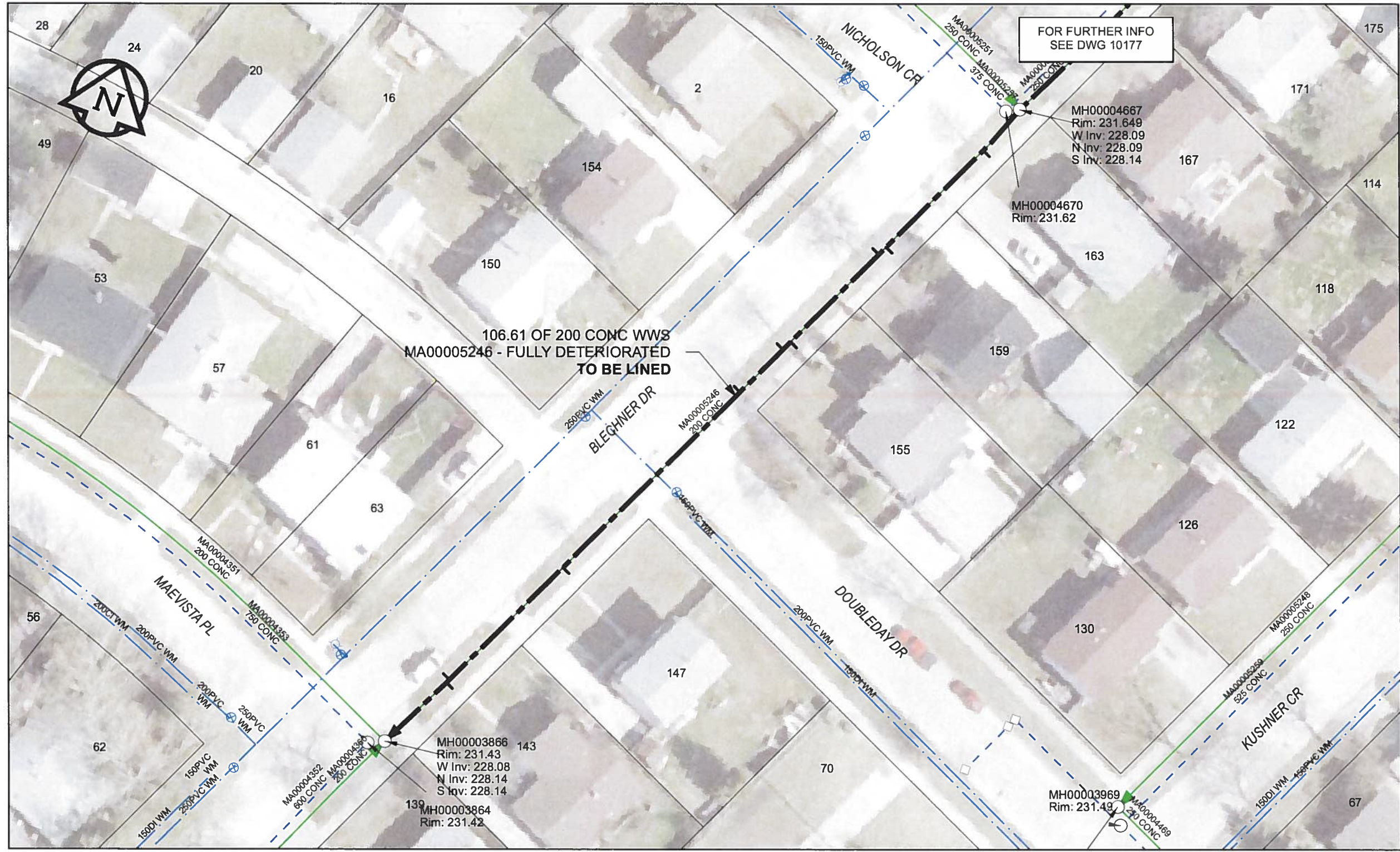


B SIZE 11" X 17" (279mm x 432mm)



FOR FURTHER INFO  
SEE DWG 10177

**SEWER JUNCTION INFORMATION**

REF MH*	DIST FROM* REF MH	SIZE*	CLOCK AT*
MH00004667	6.5	150Ø	10
MH00004667	22.8	150Ø	10
MH00004667	24	150Ø	02
MH00004667	38.8	150Ø	10
MH00004667	40.1	150Ø	02
MH00004667	47.3	150Ø	02
MH00004667	77	150Ø	10
MH00004667	96	100Ø	02
MH00004667	96.5	150Ø	10

\*JUNCTION INFORMATION FROM VIDEO INSPECTION

**WARNING**  
IF POWER EQUIPMENT OR EXPLOSIVES ARE TO BE USED FOR EXCAVATION ON THIS PROJECT, THE CONTRACTOR MUST:  
1) NOTIFY THE GAS COMPANY OF THE PROPOSED LOCATION OF EXCAVATION  
2) TAKE PRECAUTION TO AVOID DAMAGE TO GAS COMPANY INSTALLATIONS.  
SEE PROVINCIAL REGULATION 140/92 FOR DETAILS

**APEGM**  
Certificate of Authorization  
AECOM Canada Ltd.  
No. 4671 Date: *June 20/12*

**METRIC**  
WHOLE NUMBERS INDICATE MILLIMETRES  
DECIMALIZED NUMBERS INDICATE METRES  
0 2.5 5 10 15 20  
Meters  
BID OPPORTUNITY NO. 374-2012

AECOM REVIEW DRFT CHK FILE NAME: 176.pdf Saved By: JZ

**LOCATION APPROVED UNDERGROUND STRUCTURES**  
SUPR. U/G STRUCTURES DATE COMMITTEE  
**NOTE:**  
LOCATION OF UNDERGROUND STRUCTURES AS SHOWN ARE BASED ON THE BEST INFORMATION AVAILABLE. BUT NO GUARANTEE IS GIVEN THAT ALL EXISTING UTILITIES ARE SHOWN OR THAT THE GIVEN LOCATIONS ARE EXACT. CONFIRMATION OF EXISTENCE AND EXACT LOCATION OF ALL SERVICES MUST BE OBTAINED FROM THE INDIVIDUAL UTILITIES BEFORE PROCEEDING WITH CONSTRUCTION.

Can-Net GPS Reference Station WINN/810

NO.	ISSUED FOR CONSTRUCTION	12/06/18	JZ
0	ISSUED FOR CONSTRUCTION	12/06/18	JZ
NO.	REVISIONS	YY/MM/DD	BY

**AECOM**

DESIGNED BY	ALD	CHECKED BY	<i>CM</i>
DRAWN BY	JZ	APPROVED BY	<i>BTW</i>
HOR. SCALE	1:500	RELEASED FOR CONSTRUCTION	<i>[Signature]</i>
VERT. SCALE	N/A	DATE	<i>6-20-12</i>
DATE	<i>12/06/18</i>	DATE	<i>6-20-12</i>

PROFESSIONAL'S SEAL  
PROVINCE OF MANITOBA  
*[Signature]*  
K. FITCHETT  
REGISTERED ENGINEER  
CONSULTANT DRAWING NO.  
60250984-01-C-176-R0X.mxd

**THE CITY OF WINNIPEG WATER AND WASTE DEPARTMENT**

2012 SEWER RENEWALS  
BY CIPP LINING  
CONTRACT 9  
BLECHNER DR  
MH AT NICHOLSON CR TO  
MH AT MAEVISTA PL

SHEET 06 OF 84  
CITY DRAWING NUMBER  
**10176** REV 0