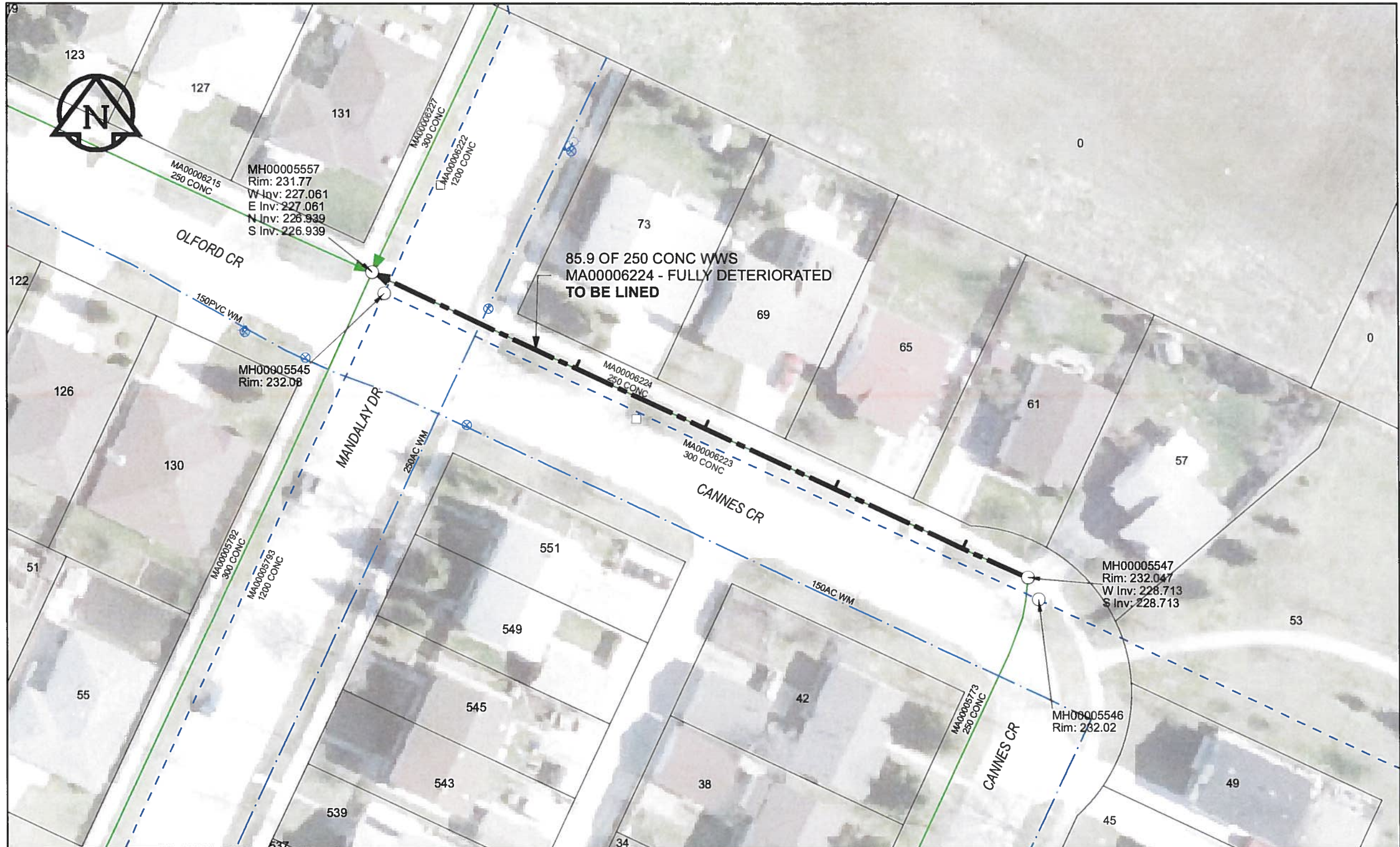


B SIZE 11" X 17" (279mm x 432mm)



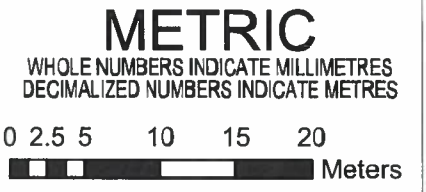
**SEWER JUNCTION INFORMATION**

REF MH*	DIST FROM* REF MH	SIZE*	CLOCK AT*
MH00005547	8.5	150Ø	02
MH00005547	25.3	150Ø	02
MH00005547	42.3	150Ø	02
MH00005547	59.2	150Ø	02

\*JUNCTION INFORMATION FROM VIDEO INSPECTION

**WARNING**  
 IF POWER EQUIPMENT OR EXPLOSIVES ARE TO BE USED FOR EXCAVATION ON THIS PROJECT, THE CONTRACTOR MUST:  
 1) NOTIFY THE GAS COMPANY OF THE PROPOSED LOCATION OF EXCAVATION.  
 2) TAKE PRECAUTION TO AVOID DAMAGE TO GAS COMPANY INSTALLATIONS.  
 SEE PROVINCIAL REGULATION 140/92 FOR DETAILS

**AECOM**  
 Certificate of Authorization  
 AECOM Canada Ltd.  
 No. 4671 Date: *June 22/12*



BID OPPORTUNITY NO. 374-2012

AECOM REVIEW DRFT CHK FILE NAME: 181.pdf Saved By: JZ

**LOCATION APPROVED UNDERGROUND STRUCTURES**

SUPR. U/G STRUCTURES	DATE

**NOTE:**  
 LOCATION OF UNDERGROUND STRUCTURES AS SHOWN ARE BASED ON THE BEST INFORMATION AVAILABLE. BUT NO GUARANTEE IS GIVEN THAT ALL EXISTING UTILITIES ARE SHOWN OR THAT THE GIVEN LOCATIONS ARE EXACT. CONFIRMATION OF EXISTENCE AND EXACT LOCATION OF ALL SERVICES MUST BE OBTAINED FROM THE INDIVIDUAL UTILITIES BEFORE PROCEEDING WITH CONSTRUCTION.

Can-Net GPS Reference Station WINN/810

NO.	REVISIONS	YY/MM/DD	BY
0	ISSUED FOR CONSTRUCTION	12/06/18	JZ

**AECOM**

DESIGNED BY	ALD	CHECKED BY	<i>cm</i>
DRAWN BY	JZ	APPROVED BY	<i>BTW</i>
HOR. SCALE	1:500	RELEASED FOR CONSTRUCTION	<i>[Signature]</i>
VERT. SCALE	N/A	DATE	<i>12/06/25</i>

PROFESSIONAL'S SEAL

CONSULTANT DRAWING NO.  
60250984-01-C-181-R0X.mxd

**THE CITY OF WINNIPEG WATER AND WASTE DEPARTMENT**

2012 SEWER RENEWALS  
 BY CIPP LINING  
 CONTRACT 9  
 CANNES CR N LEG  
 1ST MH E OF MANDALAY DR TO MH AT MANDALAY DR

SHEET 11 OF 84  
 CITY DRAWING NUMBER  
**10181** REV 0