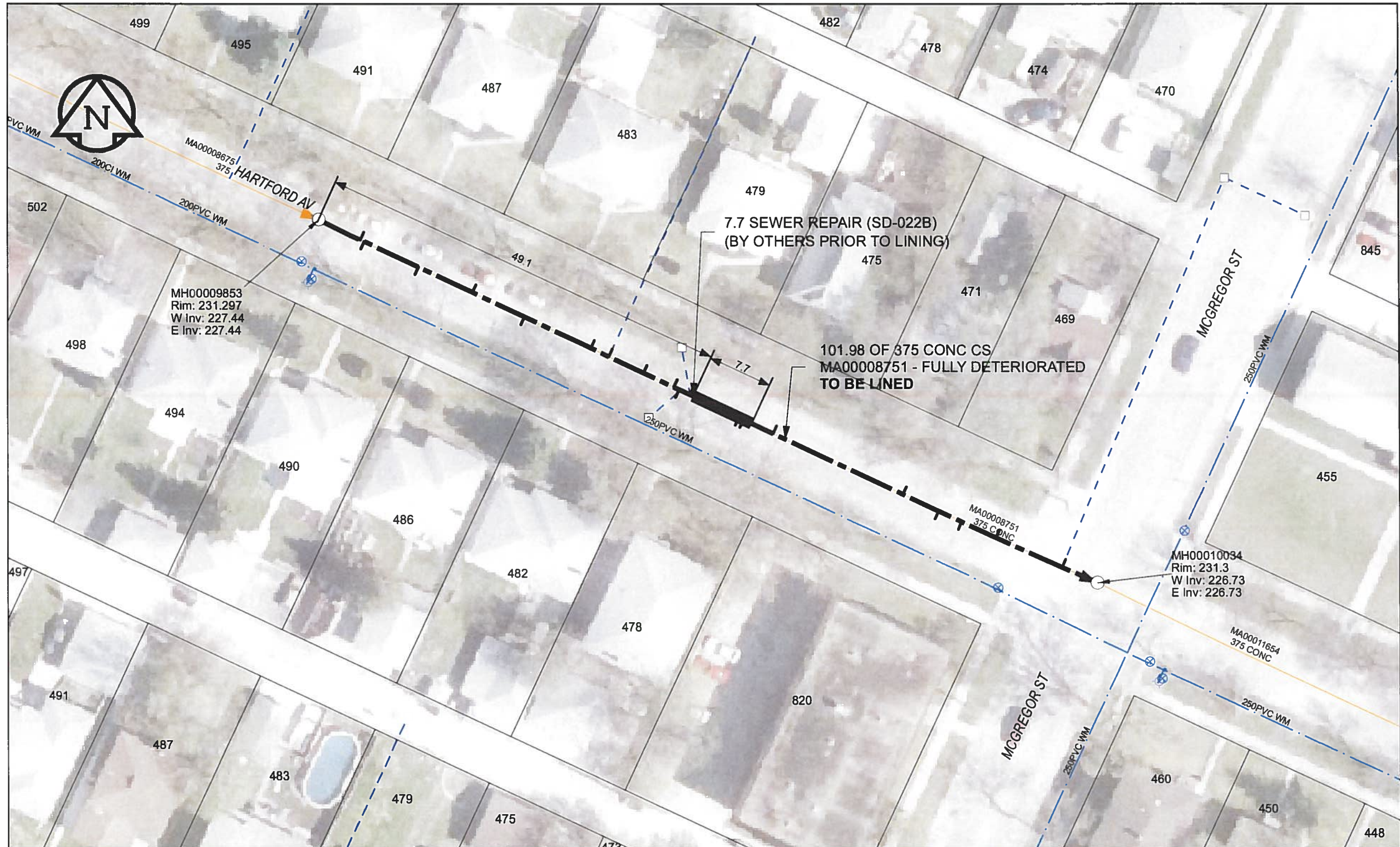


B SIZE 11" X 17" (279mm x 432mm)



**SEWER JUNCTION INFORMATION**

REF MH*	DIST FROM* REF MH	SIZE*	CLOCK AT*
MH00009853	5.5	150Ø	10
MH00009853	6	150Ø	01
MH00009853	13.1	150Ø	01
MH00009853	20.2	150Ø	11
MH00009853	27	150Ø	01
MH00009853	35.7	150Ø	10
MH00009853	38.1	150Ø	09
MH00009853	42.6	150Ø	11
MH00009853	46.6	150Ø	10
MH00009853	47.3	150Ø	01
MH00009853	48.7	150Ø	10
MH00009853	55.1	150Ø	01
MH00009853	55.7	150Ø	01
MH00009853	59.6	150Ø	11
MH00009853	76.6	150Ø	10
MH00009853	81.3	150Ø	01
MH00009853	84.3	150Ø	01
MH00009853	88.8	150Ø	11
MH00009853	97.4	150Ø	09

\*JUNCTION INFORMATION FROM VIDEO INSPECTION

**WARNING**  
 IF POWER EQUIPMENT OR EXPLOSIVES ARE TO BE USED FOR EXCAVATION ON THIS PROJECT, THE CONTRACTOR MUST:  
 1) NOTIFY THE GAS COMPANY OF THE PROPOSED LOCATION OF EXCAVATION.  
 2) TAKE PRECAUTION TO AVOID DAMAGE TO GAS COMPANY INSTALLATIONS.  
 SEE PROVINCIAL REGULATION 140/92 FOR DETAILS

**AECOM**  
 Certificate of Authorization  
 AECOM Canada Ltd.  
 No. 4671 Date: June 22/12

**METRIC**  
 WHOLE NUMBERS INDICATE MILLIMETRES  
 DECIMALIZED NUMBERS INDICATE METRES

0 2.5 5 10 15 20  
 Meters

BID OPPORTUNITY NO. 374-2012

AECOM REVIEW DRFT CHK  
 FILE NAME: 188.pdf Saved By: JZ

**LOCATION APPROVED UNDERGROUND STRUCTURES**

SUPR. U/G STRUCTURES	DATE

**NOTE:**  
 LOCATION OF UNDERGROUND STRUCTURES AS SHOWN ARE BASED ON THE BEST INFORMATION AVAILABLE. BUT NO GUARANTEE IS GIVEN THAT ALL EXISTING UTILITIES ARE SHOWN OR THAT THE GIVEN LOCATIONS ARE EXACT. CONFIRMATION OF EXISTENCE AND EXACT LOCATION OF ALL SERVICES MUST BE OBTAINED FROM THE INDIVIDUAL UTILITIES BEFORE PROCEEDING WITH CONSTRUCTION.

Can-Net GPS Reference Station WINN/810

NO.	REVISIONS	YY/MM/DD	BY
0	ISSUED FOR CONSTRUCTION	12/06/18	JZ

**AECOM**

DESIGNED BY	ALD	CHECKED BY	cm
DRAWN BY	JZ	APPROVED BY	BTW
HOR. SCALE	1:500	RELEASED FOR CONSTRUCTION	<i>[Signature]</i>
VERT. SCALE	N/A	DATE	12/06/25

PROFESSIONAL'S SEAL  
 PROVINCE OF MANITOBA  
*[Signature]*  
 K. FITCHETT  
 REGISTERED ENGINEER

**Winnipeg**

**THE CITY OF WINNIPEG**  
**WATER AND WASTE DEPARTMENT**

2012 SEWER RENEWALS  
 BY CIPP LINING  
 CONTRACT 9  
 HARTFORD AV  
 1ST MH E OF MCKENZIE ST TO  
 MH AT MCGREGOR ST

SHEET 18 OF 84  
 CITY DRAWING NUMBER  
**10188** REV 0