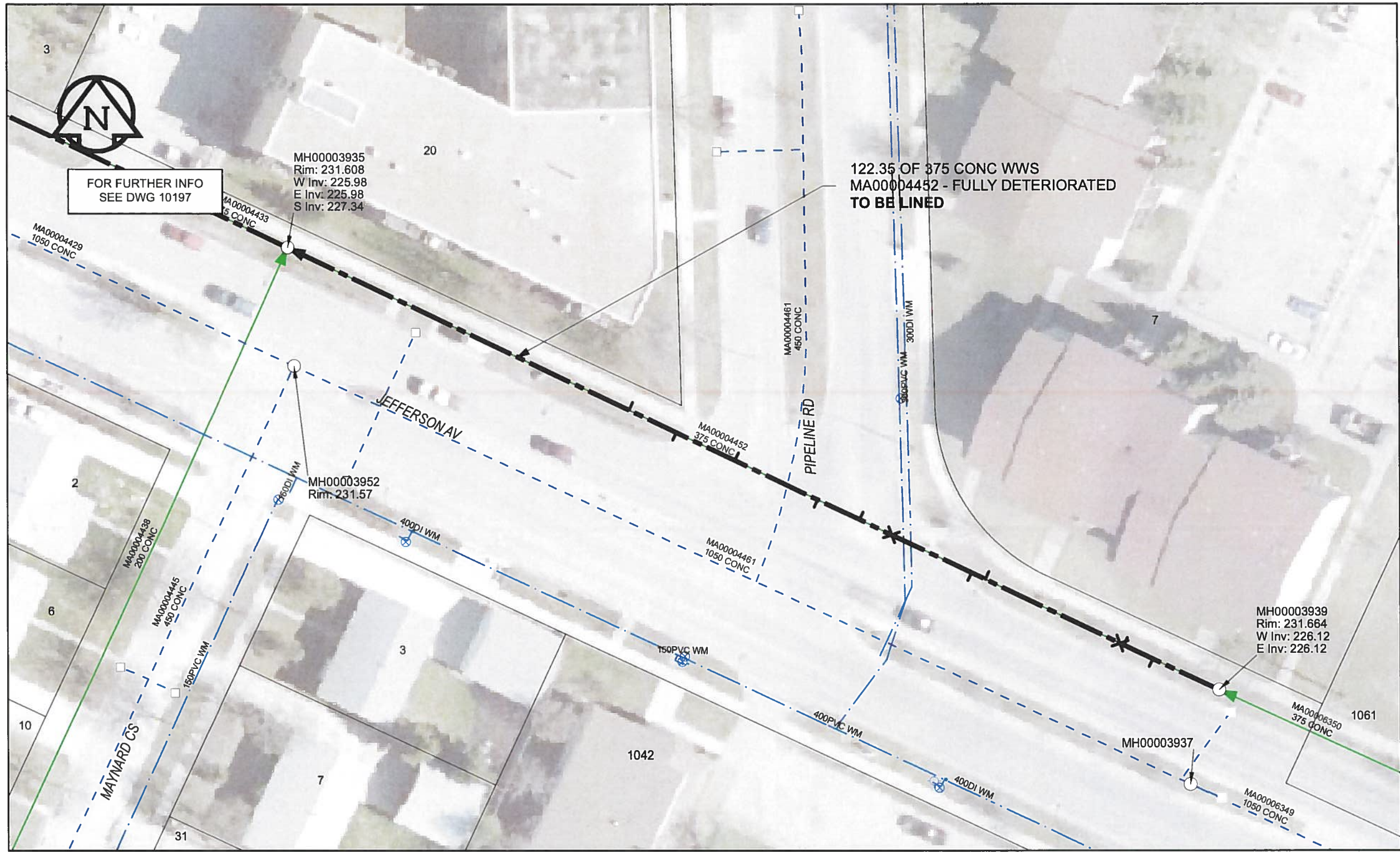


B SIZE 11" X 17" (279mm x 432mm)



**SEWER JUNCTION INFORMATION**

REF MH*	DIST FROM* REF MH	SIZE*	CLOCK AT*
MH00003939	8.70	150Ø	11
MH00003939	12.50	150Ø	01
MH00003939	13.00	150Ø	12
MH00003939	30.70	150Ø	01
MH00003939	32.50	150Ø	11
MH00003939	43.00	150Ø	12
MH00003939	47.20	150Ø	01
MH00003939	52.70	150Ø	11
MH00003939	63.60	150Ø	01
MH00003939	71.30	150Ø	11
MH00003939	77.50	150Ø	02

\*JUNCTION INFORMATION FROM VIDEO INSPECTION

**WARNING**

IF POWER EQUIPMENT OR EXPLOSIVES ARE TO BE USED FOR EXCAVATION ON THIS PROJECT, THE CONTRACTOR MUST:

- 1) NOTIFY THE GAS COMPANY OF THE PROPOSED LOCATION OF EXCAVATION.
- 2) TAKE PRECAUTION TO AVOID DAMAGE TO GAS COMPANY INSTALLATIONS.

SEE PROVINCIAL REGULATION 140/92 FOR DETAILS

**AECOM**

Certificate of Authorization

AECOM Canada Ltd.

No. 4671 Date June 21/12

**METRIC**

WHOLE NUMBERS INDICATE MILLIMETRES  
DECIMALIZED NUMBERS INDICATE METRES

0 2.5 5 10 15 20  
Meters

BID OPPORTUNITY NO. 374-2012

AECOM REVIEW DRFT CHK FILE NAME: 198.pdf Saved By: JZ

**LOCATION APPROVED UNDERGROUND STRUCTURES**

SUPR. U/G STRUCTURES	DATE

**NOTE:**  
LOCATION OF UNDERGROUND STRUCTURES AS SHOWN ARE BASED ON THE BEST INFORMATION AVAILABLE. BUT NO GUARANTEE IS GIVEN THAT ALL EXISTING UTILITIES ARE SHOWN OR THAT THE GIVEN LOCATIONS ARE EXACT. CONFIRMATION OF EXISTENCE AND EXACT LOCATION OF ALL SERVICES MUST BE OBTAINED FROM THE INDIVIDUAL UTILITIES BEFORE PROCEEDING WITH CONSTRUCTION.

Can-Net GPS Reference Station WINN/810

NO.	REVISIONS	YY/MM/DD	BY
0	ISSUED FOR CONSTRUCTION	12/06/18	JZ

**AECOM**

DESIGNED BY	ALD	CHECKED BY	cm
DRAWN BY	JZ	APPROVED BY	Stw
HOR. SCALE	1:500	RELEASED FOR CONSTRUCTION	[Signature]
VERT. SCALE	N/A	DATE	12/06/25

PROFESSIONAL'S SEAL

PROVINCE OF MANITOBA

K. FITCHETT

REGISTERED ENGINEER

CONSULTANT DRAWING NO. 60250984-01-C-198-R0X.mxd

**THE CITY OF WINNIPEG WATER AND WASTE DEPARTMENT**

2012 SEWER RENEWALS BY CIPP LINING CONTRACT 9 JEFFERSON AV

1ST MH E OF PIPELINE RD TO 1ST MH W OF PIPELINE

Winnipeg

SHEET 28 OF 84

CITY DRAWING NUMBER 10198 REV 0