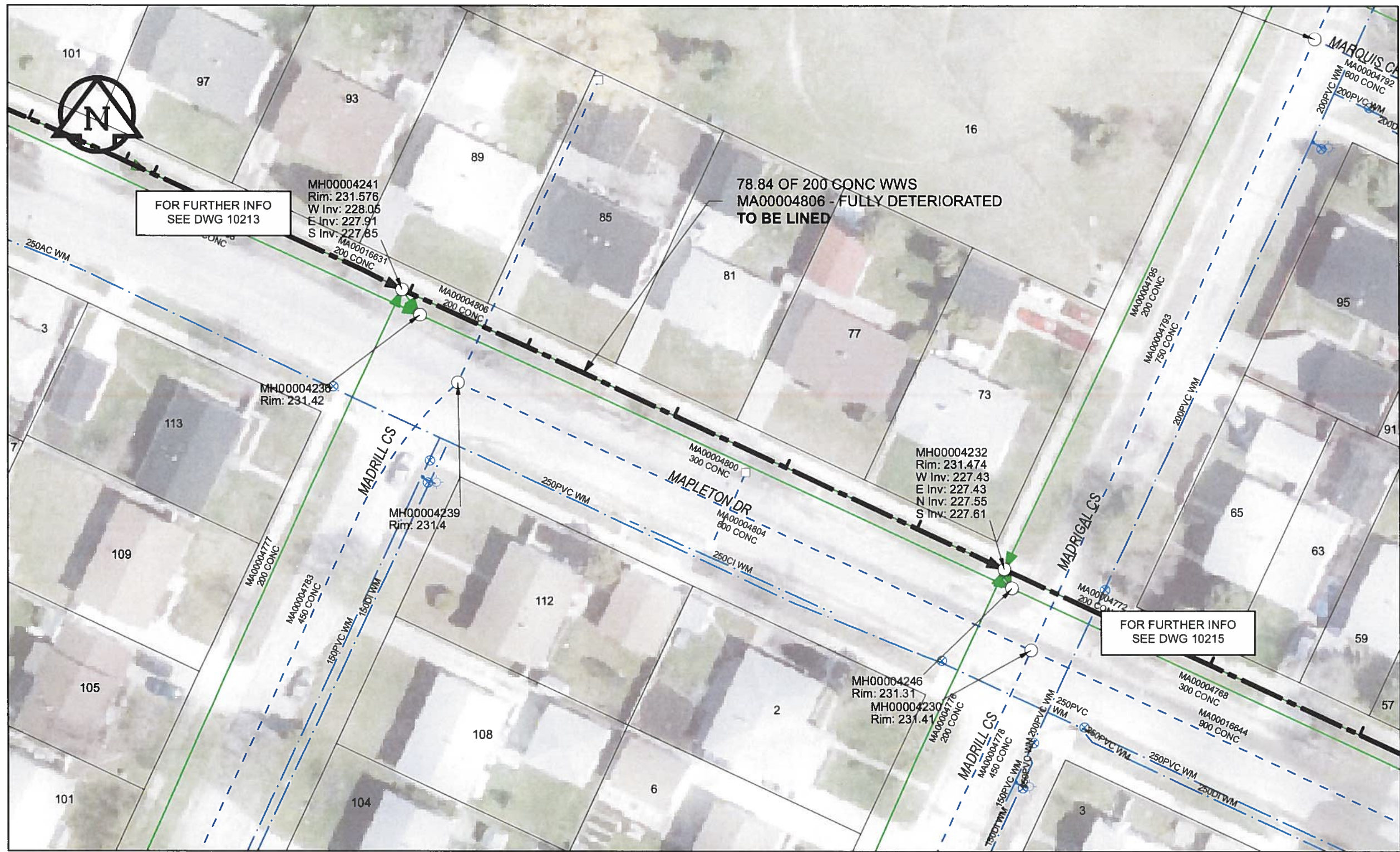


B SIZE 11" X 17" (279mm x 432mm)



SEWER JUNCTION INFORMATION

REF MH*	DIST FROM* REF MH	SIZE*	CLOCK AT*
MH00004241	0.9	150Ø	10
MH00004241	16.3	150Ø	10
MH00004241	35.6	150Ø	10
MH00004241	50.2	150Ø	10
MH00004241	67.4	150Ø	10

*JUNCTION INFORMATION FROM VIDEO INSPECTION

WARNING

IF POWER EQUIPMENT OR EXPLOSIVES ARE TO BE USED FOR EXCAVATION ON THIS PROJECT, THE CONTRACTOR MUST:

- 1) NOTIFY THE GAS COMPANY OF THE PROPOSED LOCATION OF EXCAVATION.
- 2) TAKE PRECAUTION TO AVOID DAMAGE TO GAS COMPANY INSTALLATIONS.

SEE PROVINCIAL REGULATION 140/92 FOR DETAILS

APEGM
 Certificate of Authorization
 AECOM Canada Ltd.
 No. 4671 Date: *June 22/12*

METRIC
 WHOLE NUMBERS INDICATE MILLIMETRES
 DECIMALIZED NUMBERS INDICATE METRES

0 2.5 5 10 15 20
 Meters

BID OPPORTUNITY NO. 374-2012

AECOM REVIEW DRFT CHK AD
 FILE NAME: 214.pdf Saved By: JZ

LOCATION APPROVED UNDERGROUND STRUCTURES

Can-Net GPS Reference Station WINN/810

SUPR. U/G STRUCTURES	DATE

NOTE:
 LOCATION OF UNDERGROUND STRUCTURES AS SHOWN ARE BASED ON THE BEST INFORMATION AVAILABLE. BUT NO GUARANTEE IS GIVEN THAT ALL EXISTING UTILITIES ARE SHOWN OR THAT THE GIVEN LOCATIONS ARE EXACT. CONFIRMATION OF EXISTENCE AND EXACT LOCATION OF ALL SERVICES MUST BE OBTAINED FROM THE INDIVIDUAL UTILITIES BEFORE PROCEEDING WITH CONSTRUCTION.

NO.	REVISIONS	YY/MM/DD	BY
0	ISSUED FOR CONSTRUCTION	12/06/18	JZ

AECOM

DESIGNED BY	ALD	CHECKED BY	<i>cm</i>
DRAWN BY	JZ	APPROVED BY	<i>BTW</i>
HOR. SCALE	1:500	RELEASED FOR CONSTRUCTION	<i>[Signature]</i>
VERT. SCALE	N/A	DATE	<i>12/06/17</i>

PROFESSIONAL'S SEAL

PROVINCE OF MANITOBA
[Signature]
 K. FITCHETT
 REGISTERED ENGINEER

CONSULTANT DRAWING NO.
 60250984-01-C-214-R0X.mxd

THE CITY OF WINNIPEG WATER AND WASTE DEPARTMENT

2012 SEWER RENEWALS
 BY CIPP LINING
 CONTRACT 9
 MAPLETON DR
 MH @ MADRILL CS W LEG TO
 MH @ MADRIGAL CS

SHEET 44 OF 84
 CITY DRAWING NUMBER
10214 REV 0