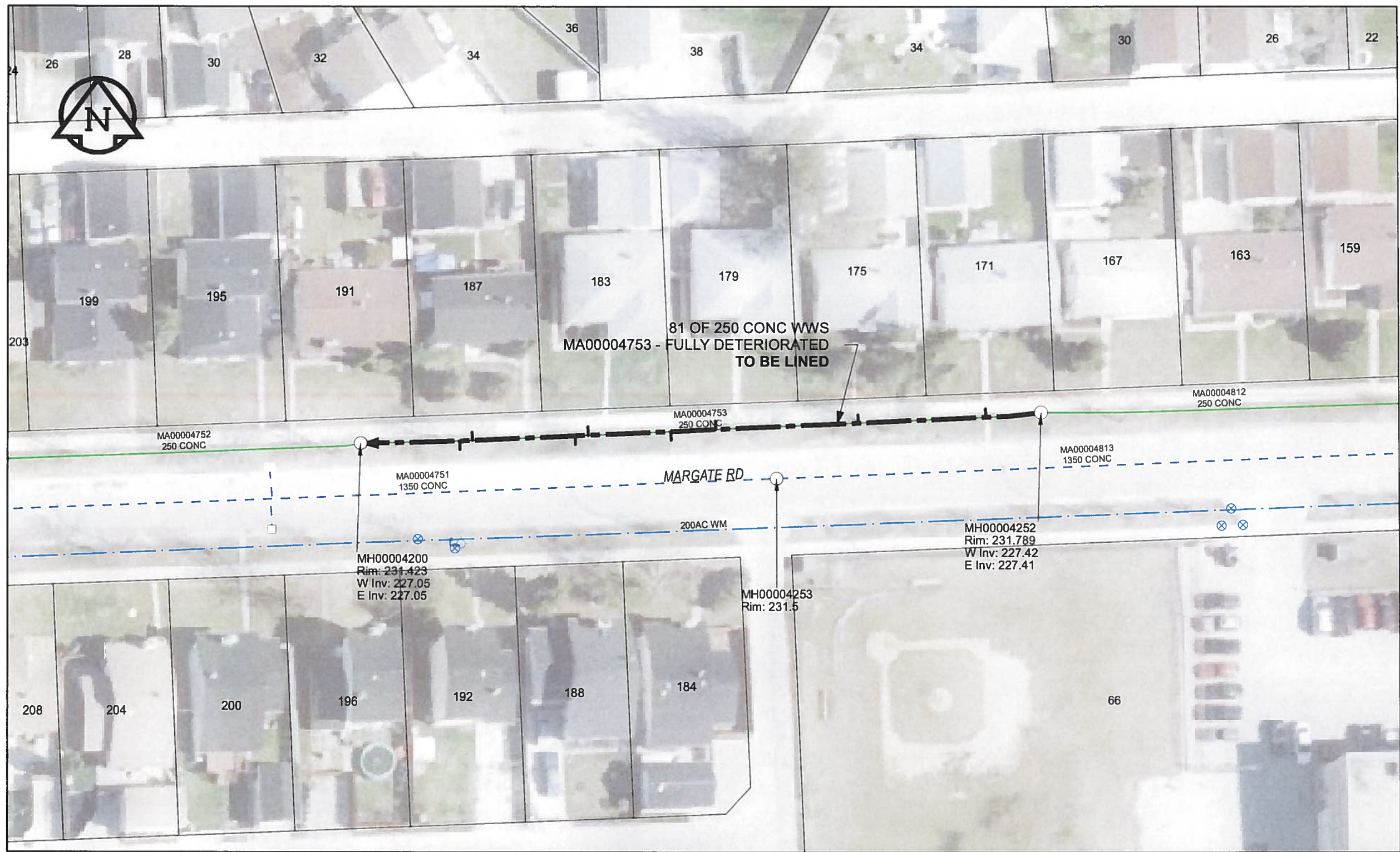


B SIZE 11" X 17" (279mm x 432mm)



SEWER JUNCTION INFORMATION

REF MH*	DIST FROM* REF MH	SIZE*	CLOCK AT*
MH00004252	6.6	150Ø	03
MH00004252	21.8	150Ø	02
MH00004252	38.7	150Ø	02
MH00004252	44.1	150Ø	09
MH00004252	53.9	150Ø	02
MH00004252	55.5	150Ø	09
MH00004252	67.7	150Ø	02
MH00004252	69.2	150Ø	09

*JUNCTION INFORMATION FROM VIDEO INSPECTION

WARNING

IF POWER EQUIPMENT OR EXPLOSIVES ARE TO BE USED FOR EXCAVATION ON THIS PROJECT, THE CONTRACTOR MUST:

- 1) NOTIFY THE GAS COMPANY OF THE PROPOSED LOCATION OF EXCAVATION.
- 2) TAKE PRECAUTION TO AVOID DAMAGE TO GAS COMPANY INSTALLATIONS.

SEE PROVINCIAL REGULATION 140/92 FOR DETAILS

AECOM

Certificate of Authorization

AECOM Canada Ltd.

No. 4671 Date: *June 22/12*

METRIC

WHOLE NUMBERS INDICATE MILLIMETRES
DECIMALIZED NUMBERS INDICATE METRES

0 2.5 5 10 15 20

— Meters

BID OPPORTUNITY NO. 374-2012

AECOM REVIEW DRFT CHK AD

FILE NAME: 218.pdf Saved By: JZ

LOCATION APPROVED UNDERGROUND STRUCTURES

Can-Net GPS Reference Station WINN/810

NO.	REVISIONS	YY/MM/DD	BY
0	ISSUED FOR CONSTRUCTION	12/06/18	JZ

NOTE: LOCATION OF UNDERGROUND STRUCTURES AS SHOWN ARE BASED ON THE BEST INFORMATION AVAILABLE. BUT NO GUARANTEE IS GIVEN THAT ALL EXISTING UTILITIES ARE SHOWN OR THAT THE GIVEN LOCATIONS ARE EXACT. CONFIRMATION OF EXISTENCE AND EXACT LOCATION OF ALL SERVICES MUST BE OBTAINED FROM THE INDIVIDUAL UTILITIES BEFORE PROCEEDING WITH CONSTRUCTION.

AECOM

DESIGNED BY	ALD	CHECKED BY	cm
DRAWN BY	JZ	APPROVED BY	BTW
HOR. SCALE	1:500	RELEASED FOR CONSTRUCTION	
VERT. SCALE	N/A	DATE	12/06/25

PROFESSIONAL'S SEAL

PROVINCE OF MANITOBA

K. FITCHETT

REGISTERED ENGINEER

CONSULTANT DRAWING NO. 60250984-01-C-218-R0X.mxd

THE CITY OF WINNIPEG WATER AND WASTE DEPARTMENT

2012 SEWER RENEWALS BY CIPP LINING CONTRACT 9 MARGATE RD 1ST MH W OF NEVILLE ST TO 2ND MH E OF MANDALAY DR

SHEET 48 OF 84

CITY DRAWING NUMBER 10218 REV 0