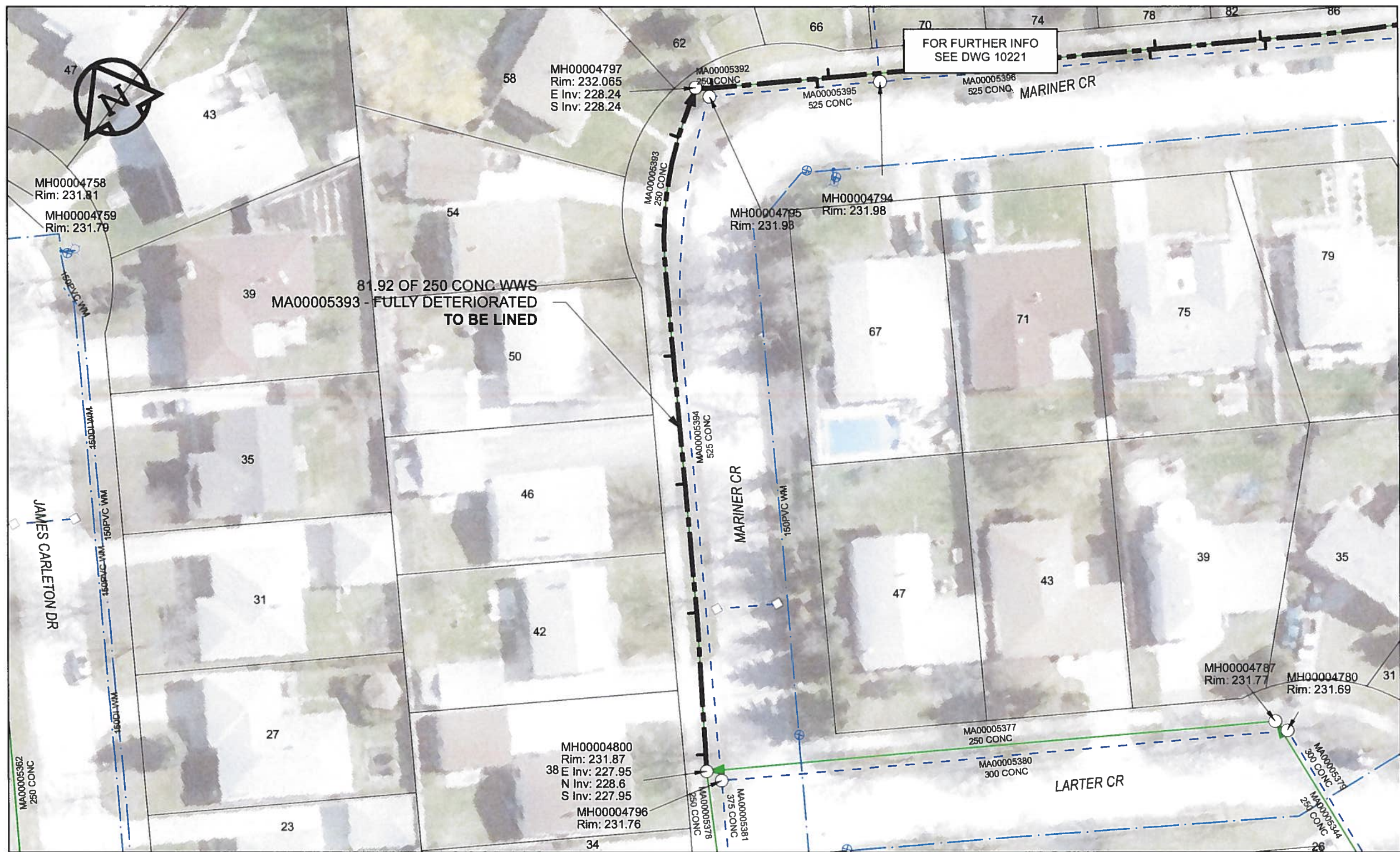


B SIZE 11" X 17" (279mm x 432mm)



**SEWER JUNCTION INFORMATION**

REF MH*	DIST FROM* REF MH	SIZE*	CLOCK AT*
MH00004800	2	150Ø	10
MH00004800	18.9	150Ø	09
MH00004800	34.3	150Ø	09
MH00004800	49.6	150Ø	09
MH00004800	65	150Ø	10
MH00004800	75.7	150Ø	09

\*JUNCTION INFORMATION FROM VIDEO INSPECTION

**WARNING**

IF POWER EQUIPMENT OR EXPLOSIVES ARE TO BE USED FOR EXCAVATION ON THIS PROJECT, THE CONTRACTOR MUST:

- 1) NOTIFY THE GAS COMPANY OF THE PROPOSED LOCATION OF EXCAVATION.
- 2) TAKE PRECAUTION TO AVOID DAMAGE TO GAS COMPANY INSTALLATIONS.

SEE PROVINCIAL REGULATION 140/92 FOR DETAILS

**AECOM**

Certificate of Authorization

AECOM Canada Ltd.

No. 4671 Date: *June 22/12*

**METRIC**

WHOLE NUMBERS INDICATE MILLIMETRES  
DECIMALIZED NUMBERS INDICATE METRES

0 2.5 5 10 15 20  
Meters

BID OPPORTUNITY NO. 374-2012

AECOM REVIEW DRFT CHK AD

FILE NAME: 220.pdf Saved By: JZ

**LOCATION APPROVED UNDERGROUND STRUCTURES**

SUPR. U/G STRUCTURES COMMITTEE DATE

**NOTE:**  
LOCATION OF UNDERGROUND STRUCTURES AS SHOWN ARE BASED ON THE BEST INFORMATION AVAILABLE. BUT NO GUARANTEE IS GIVEN THAT ALL EXISTING UTILITIES ARE SHOWN OR THAT THE GIVEN LOCATIONS ARE EXACT. CONFIRMATION OF EXISTENCE AND EXACT LOCATION OF ALL SERVICES MUST BE OBTAINED FROM THE INDIVIDUAL UTILITIES BEFORE PROCEEDING WITH CONSTRUCTION.

Can-Net GPS Reference Station WINN/810

NO.	ISSUED FOR CONSTRUCTION	DATE	BY
0	ISSUED FOR CONSTRUCTION	12/06/18	JZ
NO.	REVISIONS	YY/MM/DD	BY

**AECOM**

DESIGNED BY	ALD	CHECKED BY	<i>cm</i>
DRAWN BY	JZ	APPROVED BY	<i>brw</i>
HOR. SCALE	1:500	RELEASED FOR CONSTRUCTION	<i>12/06/18</i>
VERT. SCALE	N/A	DATE	<i>12/06/18</i>

PROFESSIONAL'S SEAL

PROVINCE OF MANITOBA

*SKWA*  
K.  
FITCHETT  
*June 22/12*  
REGISTERED ENGINEER

CONSULTANT DRAWING NO.  
60250984-01-C-220-R0X.mxd

**THE CITY OF WINNIPEG WATER AND WASTE DEPARTMENT**

2012 SEWER RENEWALS BY CIPP LINING CONTRACT 9 MARINER CR (W LEG) MH AT LARTER CR TO MH AT MARINER CR (N LEG)

Winnipeg

SHEET 50 OF 84  
CITY DRAWING NUMBER  
**10220** REV 0