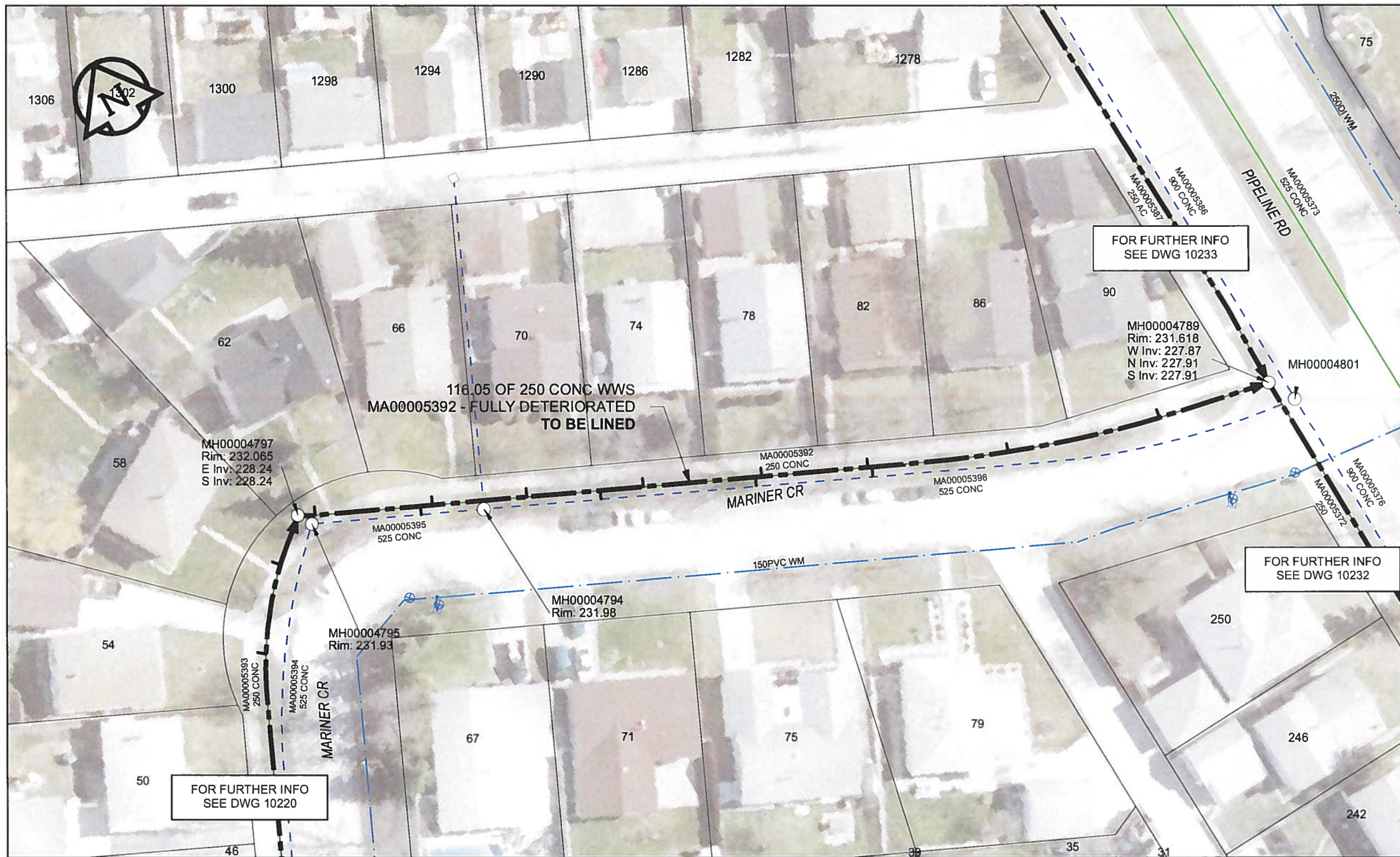


B SIZE 11" X 17" (279mm x 432mm)



**SEWER JUNCTION INFORMATION**

REF MH*	DIST FROM* REF MH	SIZE*	CLOCK AT*
MH00004797	2	150Ø	10
MH00004797	14.5	150Ø	02
MH00004797	15.9	150Ø	10
MH00004797	27.1	150Ø	10
MH00004797	35.8	150Ø	01
MH00004797	40.9	150Ø	09
MH00004797	54.2	150Ø	02
MH00004797	54.9	150Ø	09
MH00004797	67.5	150Ø	10
MH00004797	68	150Ø	03
MH00004797	84.2	150Ø	09
MH00004797	102.5	150Ø	10

\*JUNCTION INFORMATION FROM VIDEO INSPECTION

**WARNING**  
 IF POWER EQUIPMENT OR EXPLOSIVES ARE TO BE USED FOR EXCAVATION ON THIS PROJECT, THE CONTRACTOR MUST:  
 1) NOTIFY THE GAS COMPANY OF THE PROPOSED LOCATION OF EXCAVATION.  
 2) TAKE PRECAUTION TO AVOID DAMAGE TO GAS COMPANY INSTALLATIONS.  
 SEE PROVINCIAL REGULATION 140/92 FOR DETAILS

**APEGM**  
 Certificate of Authorization  
 AECOM Canada Ltd.  
 No. 4671 Date: *June 22/12*

**METRIC**  
 WHOLE NUMBERS INDICATE MILLIMETRES  
 DECIMALIZED NUMBERS INDICATE METRES

0 2.5 5 10 15 20  
 Meters

BID OPPORTUNITY NO. 374-2012

AECOM REVIEW DRFT CHK AD  
 FILE NAME: 221.pdf Saved By: JZ

**LOCATION APPROVED UNDERGROUND STRUCTURES**

SUPR. U/G STRUCTURES	DATE

**NOTE:**  
 LOCATION OF UNDERGROUND STRUCTURES AS SHOWN ARE BASED ON THE BEST INFORMATION AVAILABLE BUT NO GUARANTEE IS GIVEN THAT ALL EXISTING UTILITIES ARE SHOWN OR THAT THE GIVEN LOCATIONS ARE EXACT. CONFIRMATION OF EXISTENCE AND EXACT LOCATION OF ALL SERVICES MUST BE OBTAINED FROM THE INDIVIDUAL UTILITIES BEFORE PROCEEDING WITH CONSTRUCTION.

Can-Net GPS Reference Station WINN/810

NO.	REVISIONS	YY/MM/DD	BY
0	ISSUED FOR CONSTRUCTION	12/06/19	JZ

**AECOM**

DESIGNED BY	ALD	CHECKED BY	<i>cm</i>
DRAWN BY	JZ	APPROVED BY	<i>BTW</i>
HOR. SCALE	1:500	RELEASED FOR CONSTRUCTION	<i>6-20-11</i>
VERT. SCALE	N/A	DATE	<i>12/06/23</i>

PROFESSIONAL'S SEAL

PROVINCE OF MANITOBA  
*K. FITCHETT*  
 REGISTERED ENGINEER

CONSULTANT DRAWING NO.  
 60250984-01-C-221-R0X.mxd

**THE CITY OF WINNIPEG**  
**WATER AND WASTE DEPARTMENT**

2012 SEWER RENEWALS  
 BY CIPP LINING  
 CONTRACT 9  
 MARINER CR (N LEG)  
 MH AT MARINER CR (N LEG) TO  
 MH AT PIPELINE RD

SHEET 51 OF 84  
 CITY DRAWING NUMBER  
**10221** REV 0