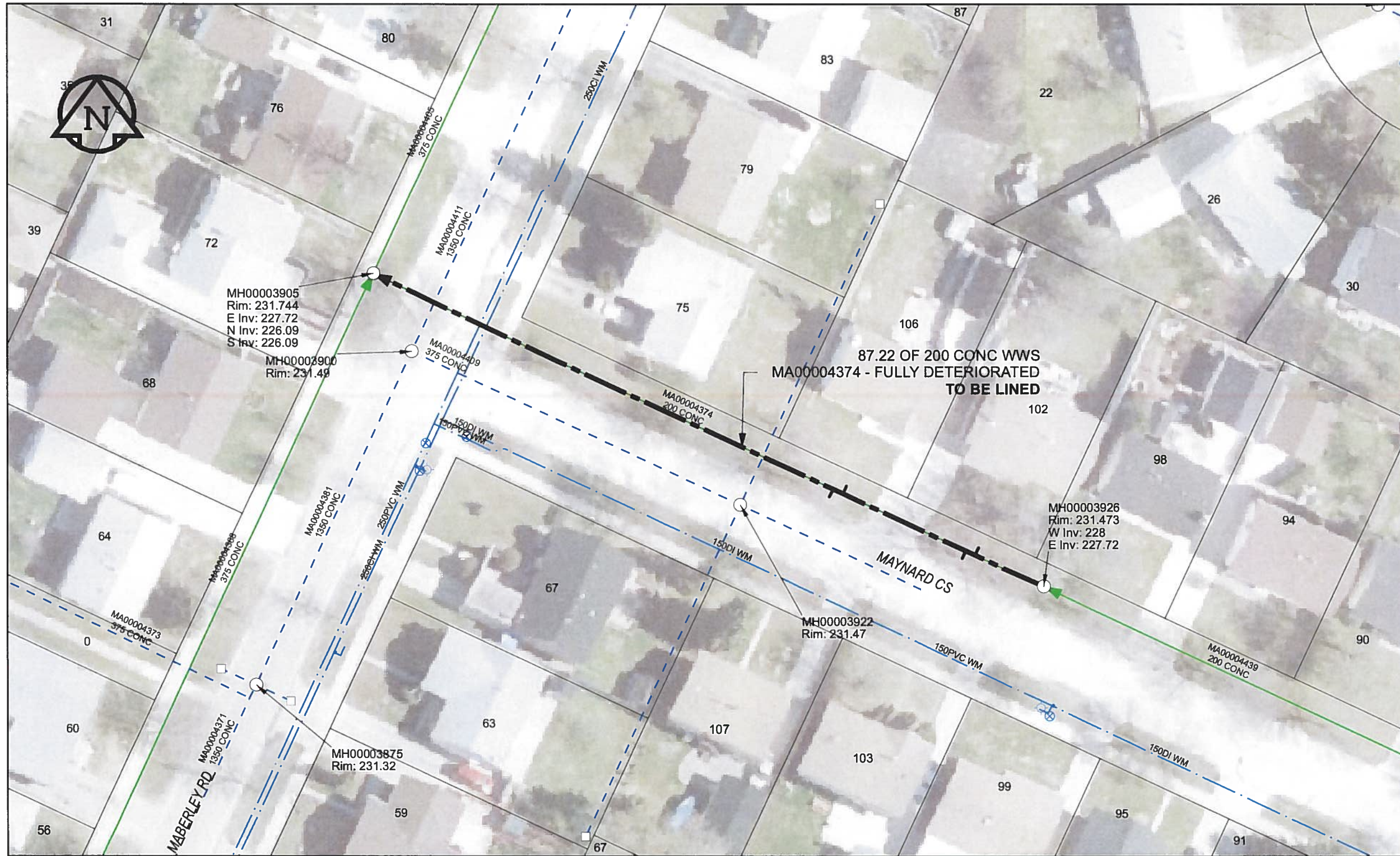


B SIZE 11" X 17" (279mm x 432mm)



SEWER JUNCTION INFORMATION

REF MH*	DIST FROM* REF MH	SIZE*	CLOCK AT*
MH00003926	8.90	150Ø	02
MH00003926	10.10	150Ø	10
MH00003926	26.10	150Ø	01
MH00003926	27.40	150Ø	10

* JUNCTION INFORMATION FROM VIDEO INSPECTION

WARNING
 IF POWER EQUIPMENT OR EXPLOSIVES ARE TO BE USED FOR EXCAVATION ON THIS PROJECT, THE CONTRACTOR MUST:
 1) NOTIFY THE GAS COMPANY OF THE PROPOSED LOCATION OF EXCAVATION.
 2) TAKE PRECAUTION TO AVOID DAMAGE TO GAS COMPANY INSTALLATIONS.
 SEE PROVINCIAL REGULATION 140/92 FOR DETAILS

AECOM
 Certificate of Authorization
 AECOM Canada Ltd.
 No. 4671 Date: June 22/12

METRIC
 WHOLE NUMBERS INDICATE MILLIMETRES
 DECIMALIZED NUMBERS INDICATE METRES

0 2.5 5 10 15 20
 Meters

BID OPPORTUNITY NO. 374-2012

AECOM REVIEW DRFT CHK

FILE NAME: 223.pdf Saved By: JZ

LOCATION APPROVED UNDERGROUND STRUCTURES

SUPR. U/G STRUCTURES COMMITTEE DATE

NOTE:
 LOCATION OF UNDERGROUND STRUCTURES AS SHOWN ARE BASED ON THE BEST INFORMATION AVAILABLE. BUT NO GUARANTEE IS GIVEN THAT ALL EXISTING UTILITIES ARE SHOWN OR THAT THE GIVEN LOCATIONS ARE EXACT. CONFIRMATION OF EXISTENCE AND EXACT LOCATION OF ALL SERVICES MUST BE OBTAINED FROM THE INDIVIDUAL UTILITIES BEFORE PROCEEDING WITH CONSTRUCTION.

NO.	REVISIONS	YY/MM/DD	BY
0	ISSUED FOR CONSTRUCTION	12/06/18	JZ

Can-Net GPS Reference Station WINN/810

NO.	REVISIONS	YY/MM/DD	BY
0	ISSUED FOR CONSTRUCTION	12/06/18	JZ

AECOM

DESIGNED BY	ALD	CHECKED BY	cm
DRAWN BY	JZ	APPROVED BY	BW
HOR. SCALE	1:500	RELEASED FOR CONSTRUCTION	
VERT. SCALE	N/A	DATE	6-26-12
DATE	12/06/25		

PROFESSIONAL'S SEAL

PROVINCE OF MANITOBA
 K. FITCHETT
 REGISTERED ENGINEER

CONSULTANT DRAWING NO.
 60250984-01-C-223-R0X.mxd



THE CITY OF WINNIPEG WATER AND WASTE DEPARTMENT

2012 SEWER RENEWALS BY CIPP LINING CONTRACT 9 MAYNARD CS S LEG
 1ST MH E MABERLEY RD TO MH @MAVERLEY RD

SHEET	53	OF	84
CITY DRAWING NUMBER	10223		
REV	0		