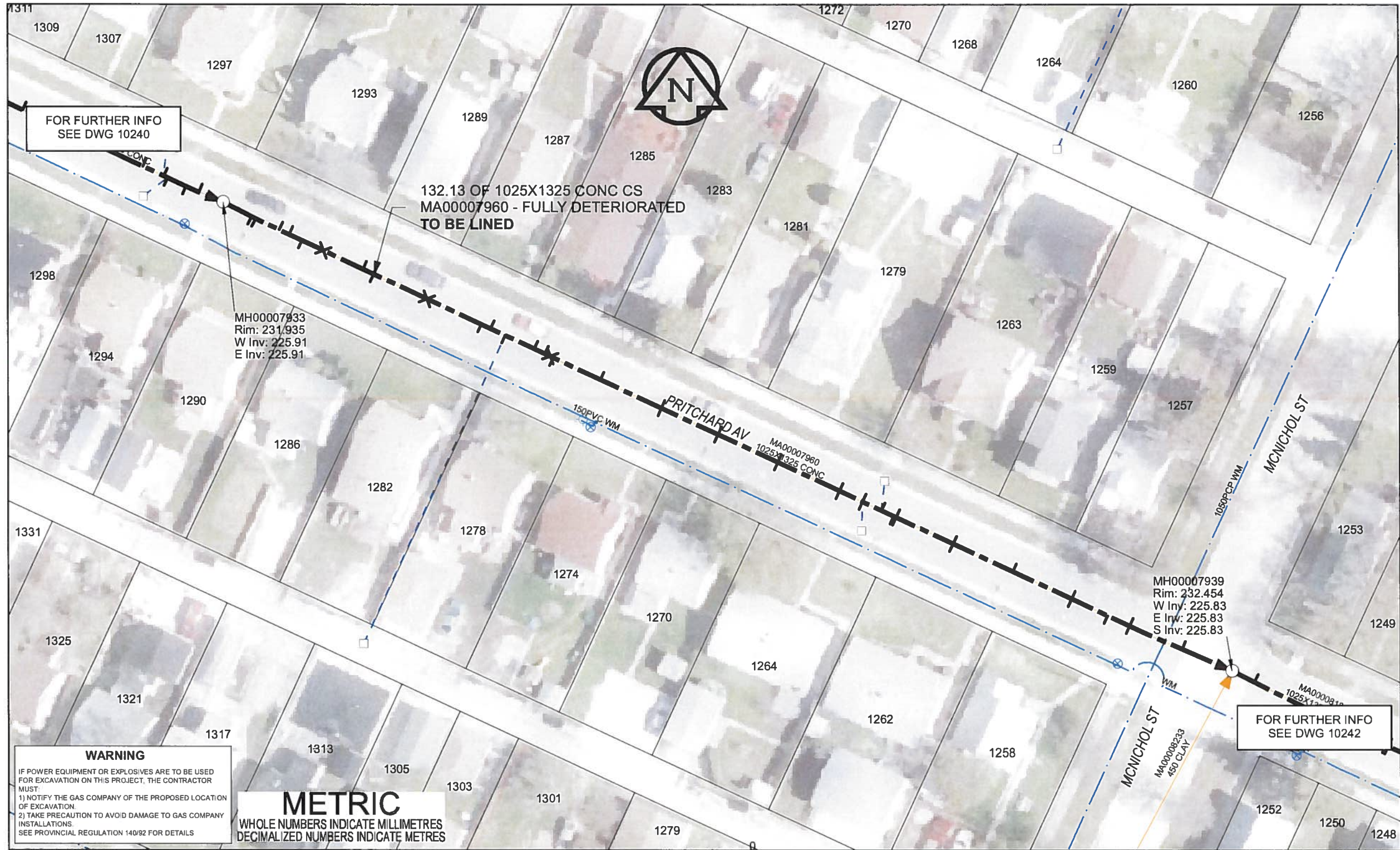


B SIZE 11" X 17" (279mm x 432mm)



**SEWER JUNCTION INFORMATION**

REF MH*	DIST FROM* REF MH	SIZE*	CLOCK AT*
MH00007933	3.8	150Ø	01
MH00007933	4.3	150Ø	01
MH00007933	7.4	150Ø	11
MH00007933	8.7	150Ø	11
MH00007933	10.4	150Ø	01
MH00007933	13.2	150Ø	12
MH00007933	18.4	50Ø	11
MH00007933	19.8	150Ø	11
MH00007933	19.8	150Ø	01
MH00007933	26.8	150Ø	12
MH00007933	33.9	150Ø	01
MH00007933	35.1	150Ø	11
MH00007933	37	150Ø	01
MH00007933	40.8	150Ø	11
MH00007933	42.2	150Ø	11
MH00007933	42.9	150Ø	12
MH00007933	43.3	150Ø	01
MH00007933	49.5	150Ø	11
MH00007933	57.5	150Ø	01
MH00007933	57.5	150Ø	11
MH00007933	64.9	150Ø	01
MH00007933	64.9	150Ø	11
MH00007933	72.7	150Ø	01
MH00007933	72.7	150Ø	11
MH00007933	80.8	150Ø	01
MH00007933	80.8	150Ø	11
MH00007933	83.8	150Ø	01
MH00007933	83.8	150Ø	11
MH00007933	86.3	150Ø	11
MH00007933	88.2	150Ø	01
MH00007933	88.2	150Ø	01
MH00007933	88.2	150Ø	11
MH00007933	95.7	150Ø	11
MH00007933	95.7	150Ø	01
MH00007933	103.5	150Ø	11
MH00007933	111.2	150Ø	01
MH00007933	111.2	150Ø	11
MH00007933	115.9	150Ø	01
MH00007933	118.8	150Ø	11
MH00007933	118.8	150Ø	01
MH00007933	125.6	150Ø	11

\* JUNCTION INFORMATION FROM VIDEO INSPECTION

**WARNING**  
IF POWER EQUIPMENT OR EXPLOSIVES ARE TO BE USED FOR EXCAVATION ON THIS PROJECT, THE CONTRACTOR MUST:  
1) NOTIFY THE GAS COMPANY OF THE PROPOSED LOCATION OF EXCAVATION.  
2) TAKE PRECAUTION TO AVOID DAMAGE TO GAS COMPANY INSTALLATIONS.  
SEE PROVINCIAL REGULATION 140/92 FOR DETAILS

**METRIC**  
WHOLE NUMBERS INDICATE MILLIMETRES  
DECIMALIZED NUMBERS INDICATE METRES

**AECOM**  
Certificate of Authorization  
AECOM Canada Ltd.  
No. 4671 Date: *June 20/12*



BID OPPORTUNITY NO. 374-2012

AECOM REVIEW DRFT CHK

FILE NAME: 241.pdf Saved By: JZ

**LOCATION APPROVED UNDERGROUND STRUCTURES**

SUPR. U/G STRUCTURES	DATE

**NOTE:**  
LOCATION OF UNDERGROUND STRUCTURES AS SHOWN ARE BASED ON THE BEST INFORMATION AVAILABLE. BUT NO GUARANTEE IS GIVEN THAT ALL EXISTING UTILITIES ARE SHOWN OR THAT THE GIVEN LOCATIONS ARE EXACT. CONFIRMATION OF EXISTENCE AND EXACT LOCATION OF ALL SERVICES MUST BE OBTAINED FROM THE INDIVIDUAL UTILITIES BEFORE PROCEEDING WITH CONSTRUCTION.

Can-Net GPS Reference Station WINN/810

NO.	REVISIONS	YY/MM/DD	BY
0	ISSUED FOR CONSTRUCTION	12/06/18	JZ

**AECOM**

DESIGNED BY	ALD	CHECKED BY	<i>cm</i>
DRAWN BY	JZ	APPROVED BY	<i>BTW</i>
HOR. SCALE	1:500	RELEASED FOR CONSTRUCTION	<i>X</i>
VERT. SCALE	N/A	DATE	<i>12/06/18</i>

PROFESSIONAL'S SEAL  
PROVINCE OF MANITOBA  
*RWG*  
*K.*  
**FITCHETT**  
REGISTERED ENGINEER

CONSULTANT DRAWING NO.  
60250984-01-C-241-R0X.mxd

**THE CITY OF WINNIPEG**  
WATER AND WASTE DEPARTMENT

2012 SEWER RENEWALS  
BY CIPP LINING  
CONTRACT 9  
PRITCHARD AV  
1ST MH W OF MCNICHOL ST TO  
MH AT MCNICHOL ST

SHEET 71 OF 84  
CITY DRAWING NUMBER  
**10241** REV 0