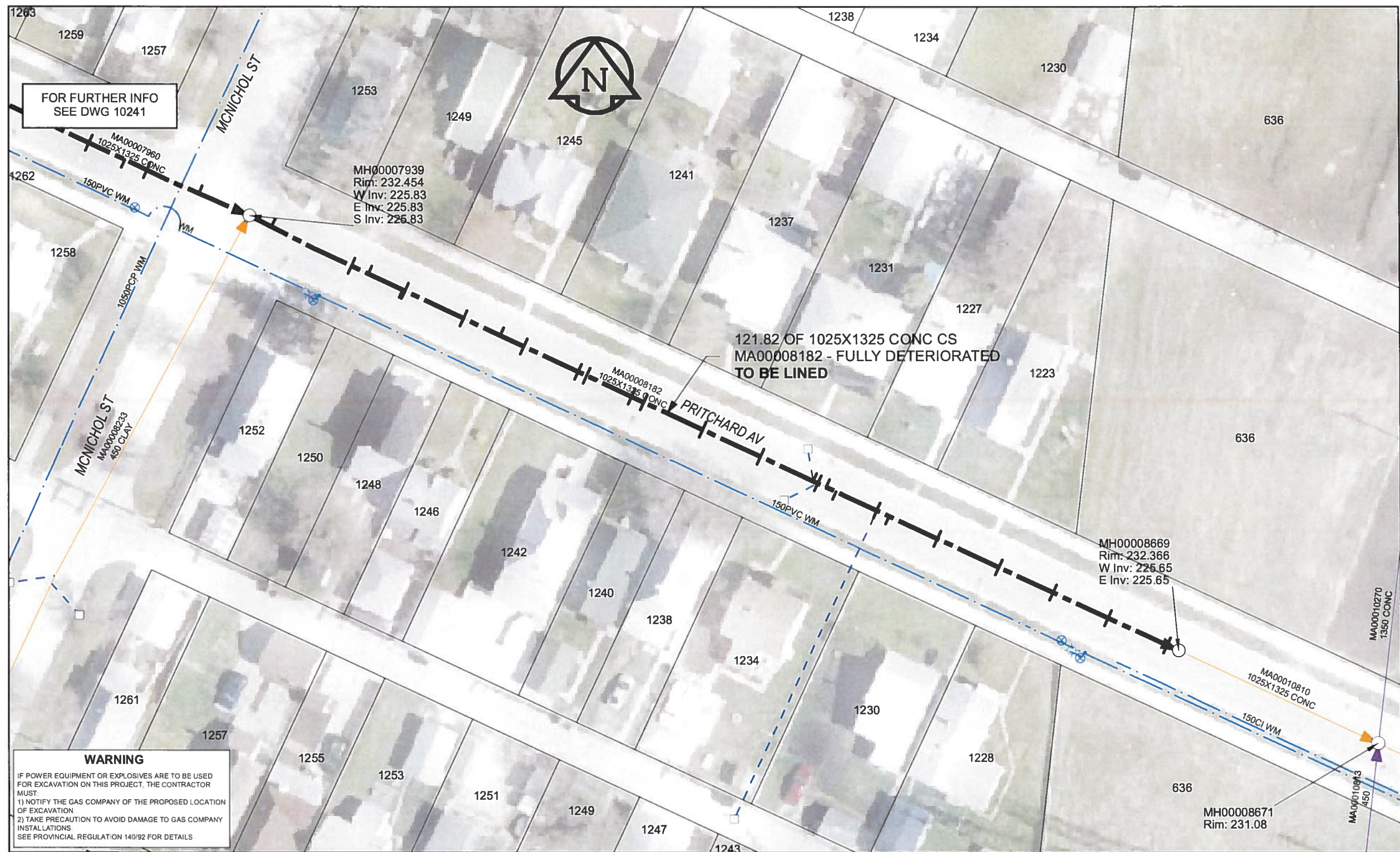


B SIZE 11" X 17" (279mm x 432mm)



FOR FURTHER INFO
SEE DWG 10241

MH00007939
Rim: 232.454
W Inv: 225.83
E Inv: 225.83
S Inv: 225.83

121.82 OF 1025X1325 CONC CS
MA00008182 - FULLY DETERIORATED
TO BE LINED

MH00008669
Rim: 232.366
W Inv: 225.65
E Inv: 225.65

MH00008671
Rim: 231.08

REF MH*	DIST FROM* REF MH	SIZE*	CLOCK AT*
MH00007939	2.9	150Ø	09
MH00007939	13.5	150Ø	11
MH00007939	13.5	150Ø	01
MH00007939	15.7	150Ø	11
MH00007939	20.5	150Ø	01
MH00007939	20.5	150Ø	11
MH00007939	20.5	150Ø	01
MH00007939	28.2	150Ø	01
MH00007939	28.2	150Ø	11
MH00007939	33	150Ø	11
MH00007939	36.1	150Ø	11
MH00007939	36.1	150Ø	01
MH00007939	43.2	150Ø	11
MH00007939	43.2	150Ø	01
MH00007939	44.3	150Ø	11
MH00007939	44.3	150Ø	01
MH00007939	50.2	150Ø	11
MH00007939	50.2	150Ø	01
MH00007939	51.8	150Ø	11
MH00007939	51.8	150Ø	01
MH00007939	59.5	150Ø	01
MH00007939	59.5	150Ø	11
MH00007939	67.1	150Ø	11
MH00007939	67.1	150Ø	01
MH00007939	74	150Ø	11
MH00007939	74.6	150Ø	11
MH00007939	74.6	150Ø	01
MH00007939	75.7	150Ø	11
MH00007939	77	150Ø	01
MH00007939	82.3	150Ø	11
MH00007939	82.3	150Ø	01
MH00007939	83.9	150Ø	01
MH00007939	90.2	150Ø	01
MH00007939	90.2	150Ø	11
MH00007939	98.3	150Ø	01
MH00007939	98.3	150Ø	11
MH00007939	105.4	150Ø	11
MH00007939	105.4	150Ø	01
MH00007939	112.6	150Ø	01
MH00007939	112.6	150Ø	11
MH00007939	120.3	150Ø	01
MH00007939	120.3	150Ø	11

*JUNCTION INFORMATION FROM VIDEO INSPECTION

APEGM
Certificate of Authorization
AECOM Canada Ltd.
No. 4671 Date: June 22/12

METRIC
WHOLE NUMBERS INDICATE MILLIMETRES
DECIMALIZED NUMBERS INDICATE METRES
0 2.5 5 10 15 20
Meters

BID OPPORTUNITY NO. 374-2012

WARNING
IF POWER EQUIPMENT OR EXPLOSIVES ARE TO BE USED FOR EXCAVATION ON THIS PROJECT, THE CONTRACTOR MUST:
1) NOTIFY THE GAS COMPANY OF THE PROPOSED LOCATION OF EXCAVATION
2) TAKE PRECAUTION TO AVOID DAMAGE TO GAS COMPANY INSTALLATIONS
SEE PROVINCIAL REGULATION 140/92 FOR DETAILS

LOCATION APPROVED UNDERGROUND STRUCTURES

SUPR. U/G STRUCTURES	DATE

NOTE:
LOCATION OF UNDERGROUND STRUCTURES AS SHOWN ARE BASED ON THE BEST INFORMATION AVAILABLE. BUT NO GUARANTEE IS GIVEN THAT ALL EXISTING UTILITIES ARE SHOWN OR THAT THE GIVEN LOCATIONS ARE EXACT. CONFIRMATION OF EXISTENCE AND EXACT LOCATION OF ALL SERVICES MUST BE OBTAINED FROM THE INDIVIDUAL UTILITIES BEFORE PROCEEDING WITH CONSTRUCTION.

Can-Net GPS Reference Station WINN/810

NO.	ISSUED FOR CONSTRUCTION	YY/MM/DD	BY
0	ISSUED FOR CONSTRUCTION	12/06/18	JZ
	REVISIONS		

AECOM

DESIGNED BY	ALD	CHECKED BY	cm
DRAWN BY	JZ	APPROVED BY	BTW
HOR. SCALE	1:500	RELEASED FOR CONSTRUCTION	X8
VERT. SCALE	N/A	DATE	12/06/25

PROFESSIONAL'S SEAL
PROVINCE OF MANITOBA
K. FITCHETT
REGISTERED ENGINEER
CONSULTANT DRAWING NO. 60250984-01-C-242-R0X.mxd

THE CITY OF WINNIPEG
WATER AND WASTE DEPARTMENT

2012 SEWER RENEWALS
BY CIPP LINING
CONTRACT 9
PRITCHARD AV
MH AT MCNICHOL ST TO
1ST MH E OF MCNICHOL ST

SHEET 72 OF 84
CITY DRAWING NUMBER
10242 REV 0

AECOM REVIEW DRFT CHK AD
FILE NAME: 242.pdf Saved By: JZ