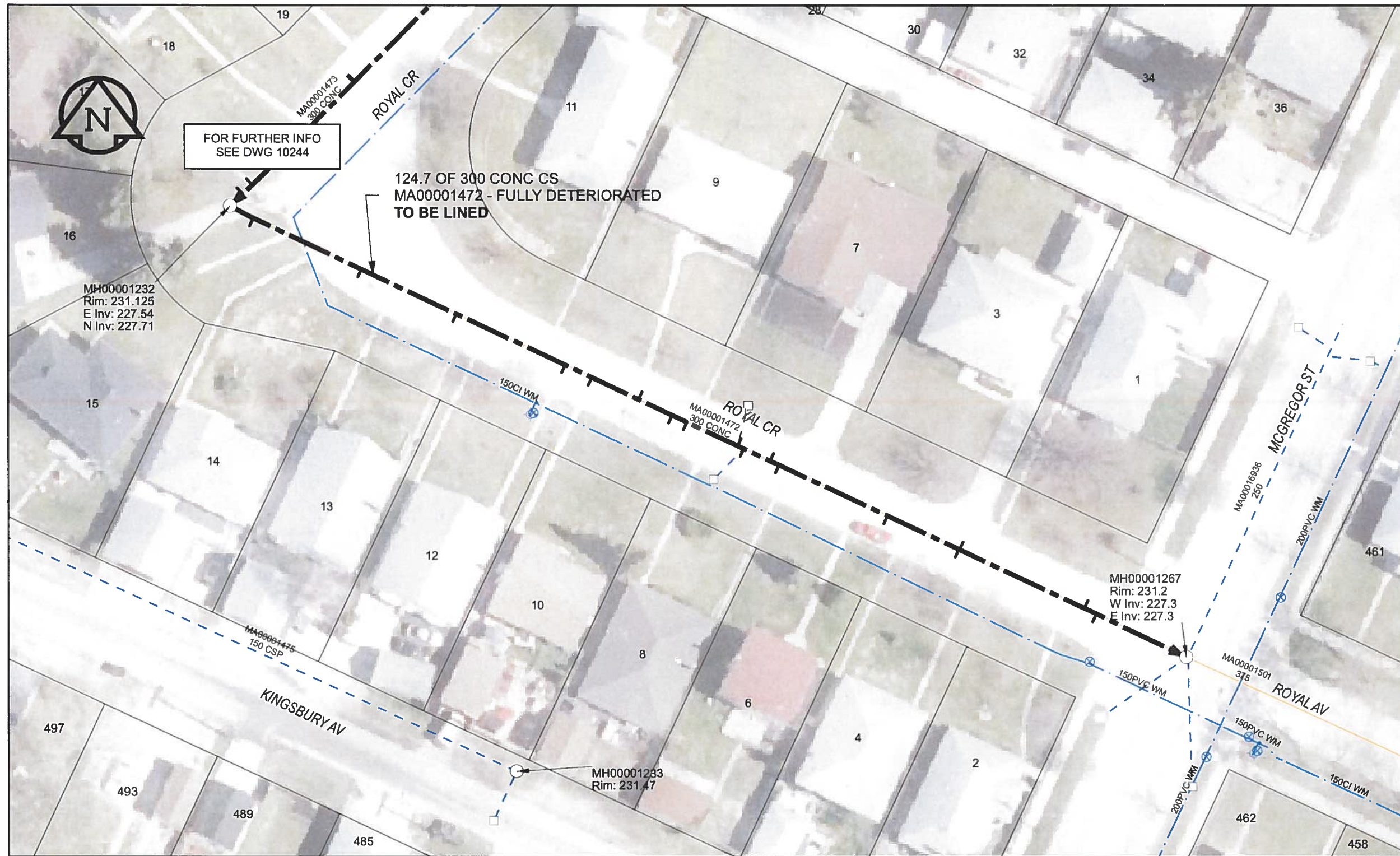


B SIZE 11" X 17" (279mm x 432mm)



**SEWER JUNCTION INFORMATION**

REF MH*	DIST FROM* REF MH	SIZE*	CLOCK AT*
MH00001232	3.10	150Ø	03
MH00001232	17.20	150Ø	02
MH00001232	29.60	150Ø	03
MH00001232	43.70	150Ø	02
MH00001232	47.20	150Ø	01
MH00001232	53.30	150Ø	10
MH00001232	57.70	150Ø	03
MH00001232	59.60	150Ø	02
MH00001232	66.20	150Ø	10
MH00001232	67.00	150Ø	01
MH00001232	70.40	150Ø	10
MH00001232	71.60	150Ø	02
MH00001232	85.70	150Ø	02
MH00001232	95.00	150Ø	02
MH00001232	95.10	150Ø	10
MH00001232	111.30	150Ø	10
MH00001232	112.90	150Ø	02

\* JUNCTION INFORMATION FROM VIDEO INSPECTION

**WARNING**  
 IF POWER EQUIPMENT OR EXPLOSIVES ARE TO BE USED FOR EXCAVATION ON THIS PROJECT, THE CONTRACTOR MUST:  
 1) NOTIFY THE GAS COMPANY OF THE PROPOSED LOCATION OF EXCAVATION.  
 2) TAKE PRECAUTION TO AVOID DAMAGE TO GAS COMPANY INSTALLATIONS.  
 SEE PROVINCIAL REGULATION 140/92 FOR DETAILS

**AECOM**  
 Certificate of Authorization  
 AECOM Canada Ltd.  
 No. 4671 Date: June 20/12

**METRIC**  
 WHOLE NUMBERS INDICATE MILLIMETRES  
 DECIMALIZED NUMBERS INDICATE METRES  
 0 2.5 5 10 15 20  
 Meters

BID OPPORTUNITY NO. 374-2012

AECOM REVIEW DRFT CHK  
 FILE NAME: 243.pdf Saved By: JZ

**LOCATION APPROVED UNDERGROUND STRUCTURES**

SUPR. U/G STRUCTURES	DATE

**NOTE:**  
 LOCATION OF UNDERGROUND STRUCTURES AS SHOWN ARE BASED ON THE BEST INFORMATION AVAILABLE. BUT NO GUARANTEE IS GIVEN THAT ALL EXISTING UTILITIES ARE SHOWN OR THAT THE GIVEN LOCATIONS ARE EXACT. CONFIRMATION OF EXISTENCE AND EXACT LOCATION OF ALL SERVICES MUST BE OBTAINED FROM THE INDIVIDUAL UTILITIES BEFORE PROCEEDING WITH CONSTRUCTION.

Can-Net GPS Reference Station WINN/810

NO.	REVISIONS	YY/MM/DD	BY
0	ISSUED FOR CONSTRUCTION	12/06/18	JZ

**AECOM**

DESIGNED BY	ALD	CHECKED BY	cm
DRAWN BY	JZ	APPROVED BY	STW
HOR. SCALE	1:500	RELEASED FOR CONSTRUCTION	
VERT. SCALE	N/A	DATE	12/06/18

PROFESSIONAL'S SEAL  
 PROVINCE OF MANITOBA  
 K. FITCHETT  
 REGISTERED ENGINEER  
 CONSULTANT DRAWING NO. 60250984-01-C-243-R0X.mxd

**THE CITY OF WINNIPEG WATER AND WASTE DEPARTMENT**

2012 SEWER RENEWALS BY CIPP LINING CONTRACT 9 ROYAL CR (S LEG) MH AT ROYAL CR (W LEG) TO MH AT MCGREGOR ST

SHEET 73 OF 84  
 CITY DRAWING NUMBER 10243 REV 0