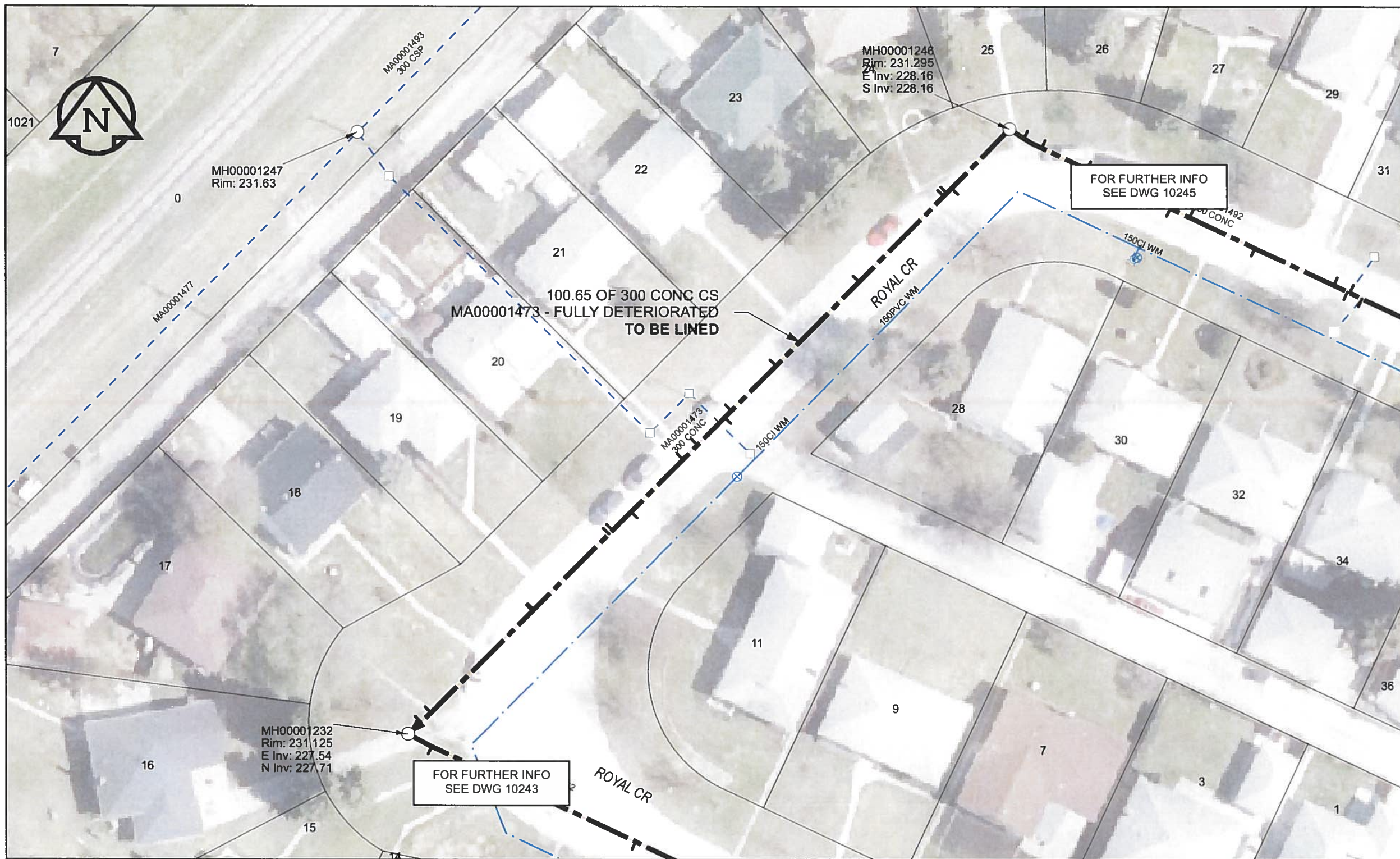


B SIZE 11" X 17" (279mm x 432mm)



SEWER JUNCTION INFORMATION

REF MH*	DIST FROM* REF MH	SIZE*	CLOCK AT*
MH00001246	9.80	150Ø	09
MH00001246	10.60	150Ø	02
MH00001246	11.10	150Ø	02
MH00001246	25.30	150Ø	02
MH00001246	39.20	150Ø	02
MH00001246	39.20	150Ø	02
MH00001246	46.70	100Ø	01
MH00001246	47.80	150Ø	10
MH00001246	52.40	200Ø	02
MH00001246	54.80	200Ø	02
MH00001246	63.50	150Ø	10
MH00001246	66.60	150Ø	02
MH00001246	67.20	150Ø	02
MH00001246	79.80	150Ø	02
MH00001246	80.00	200Ø	01
MH00001246	97.00	150Ø	02
MH00001246	98.60	150Ø	02

*JUNCTION INFORMATION FROM VIDEO INSPECTION

WARNING
 IF POWER EQUIPMENT OR EXPLOSIVES ARE TO BE USED FOR EXCAVATION ON THIS PROJECT, THE CONTRACTOR MUST:
 1) NOTIFY THE GAS COMPANY OF THE PROPOSED LOCATION OF EXCAVATION.
 2) TAKE PRECAUTION TO AVOID DAMAGE TO GAS COMPANY INSTALLATIONS.
 SEE PROVINCIAL REGULATION 140/92 FOR DETAILS

APEGM
 Certificate of Authorization
 AECOM Canada Ltd.
 No. 4671 Date *June 21/12*

METRIC
 WHOLE NUMBERS INDICATE MILLIMETRES
 DECIMALIZED NUMBERS INDICATE METRES

0 2.5 5 10 15 20
 Meters

BID OPPORTUNITY NO. 374-2012

AECOM REVIEW DRFT CHK AD

FILE NAME: 244.pdf Saved By: JZ

LOCATION APPROVED UNDERGROUND STRUCTURES

SUPR. U/G STRUCTURES	DATE

NOTE:
 LOCATION OF UNDERGROUND STRUCTURES AS SHOWN ARE BASED ON THE BEST INFORMATION AVAILABLE. BUT NO GUARANTEE IS GIVEN THAT ALL EXISTING UTILITIES ARE SHOWN OR THAT THE GIVEN LOCATIONS ARE EXACT. CONFIRMATION OF EXISTENCE AND EXACT LOCATION OF ALL SERVICES MUST BE OBTAINED FROM THE INDIVIDUAL UTILITIES BEFORE PROCEEDING WITH CONSTRUCTION.

Can-Net GPS Reference Station WINN/810

NO.	ISSUED FOR CONSTRUCTION	YY/MM/DD	BY
0	ISSUED FOR CONSTRUCTION	12/06/18	JZ
	REVISIONS		

AECOM

DESIGNED BY	ALD	CHECKED BY	<i>cm</i>
DRAWN BY	JZ	APPROVED BY	<i>BTW</i>
HOR. SCALE	1:500	RELEASED FOR CONSTRUCTION	<i>[Signature]</i>
VERT. SCALE	N/A	DATE	<i>12-06-12</i>
DATE	<i>12/06/25</i>	CONSULTANT DRAWING NO.	60250984-01-C-244-R0X.mxd

PROFESSIONAL'S SEAL



THE CITY OF WINNIPEG WATER AND WASTE DEPARTMENT

2012 SEWER RENEWALS BY CIPP LINING CONTRACT 9 ROYAL CR (W LEG)
 MH AT ROYAL CR (N LEG) TO MH AT ROYAL CR (S LEG)

SHEET	74	OF	84
CITY DRAWING NUMBER	10244		
REV	0		